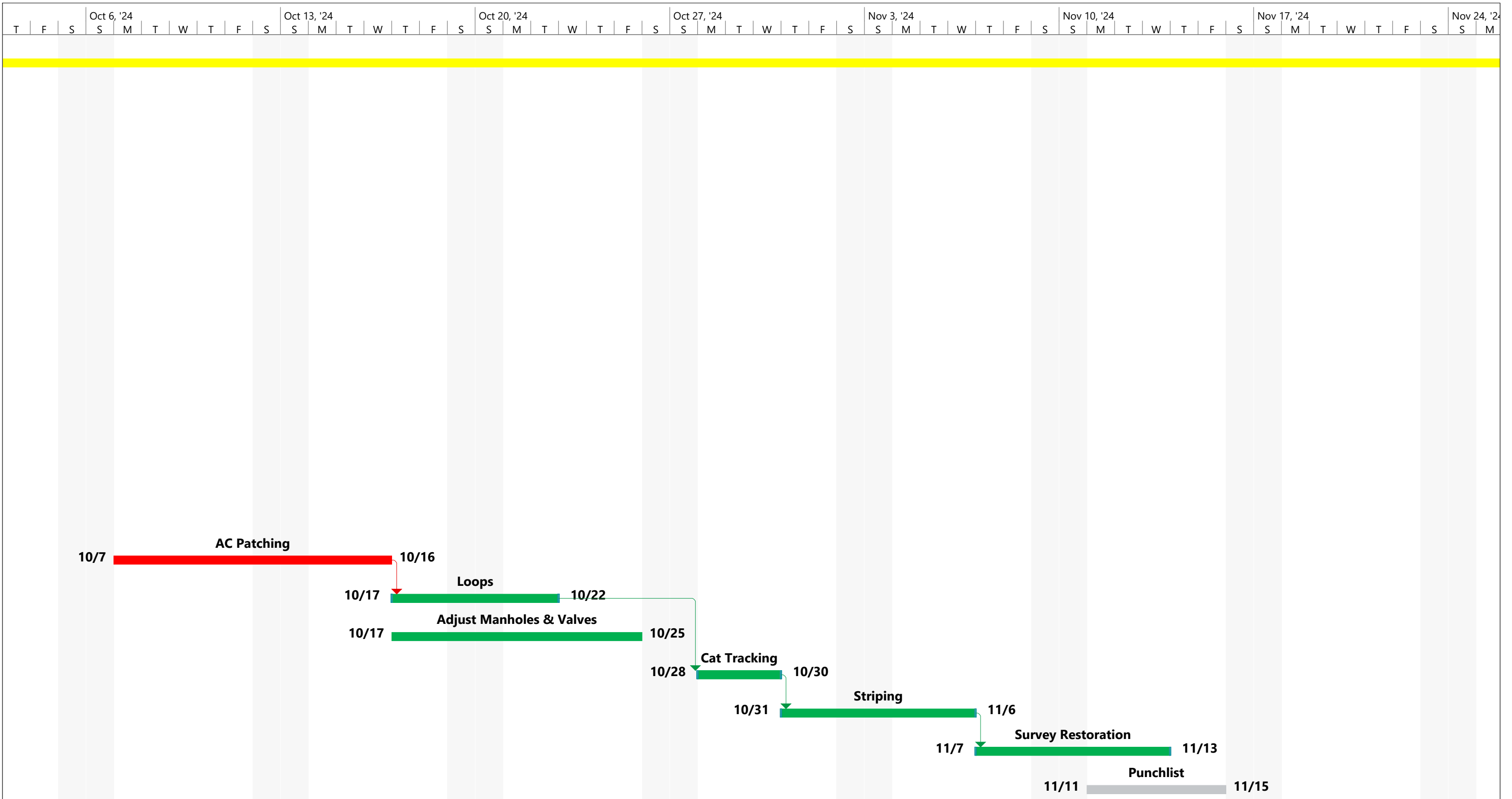


Project: Project1.1 Date: Thu 9/5/24	Task		Project Summary		Manual Task		Start-only		Deadline	
	Split		Inactive Task		Duration-only		Finish-only		Progress	
	Milestone		Inactive Milestone		Manual Summary Rollup		External Tasks		Manual Progress	
	Summary		Inactive Summary		Manual Summary		External Milestone			



Project: Project1.1
Date: Thu 9/5/24

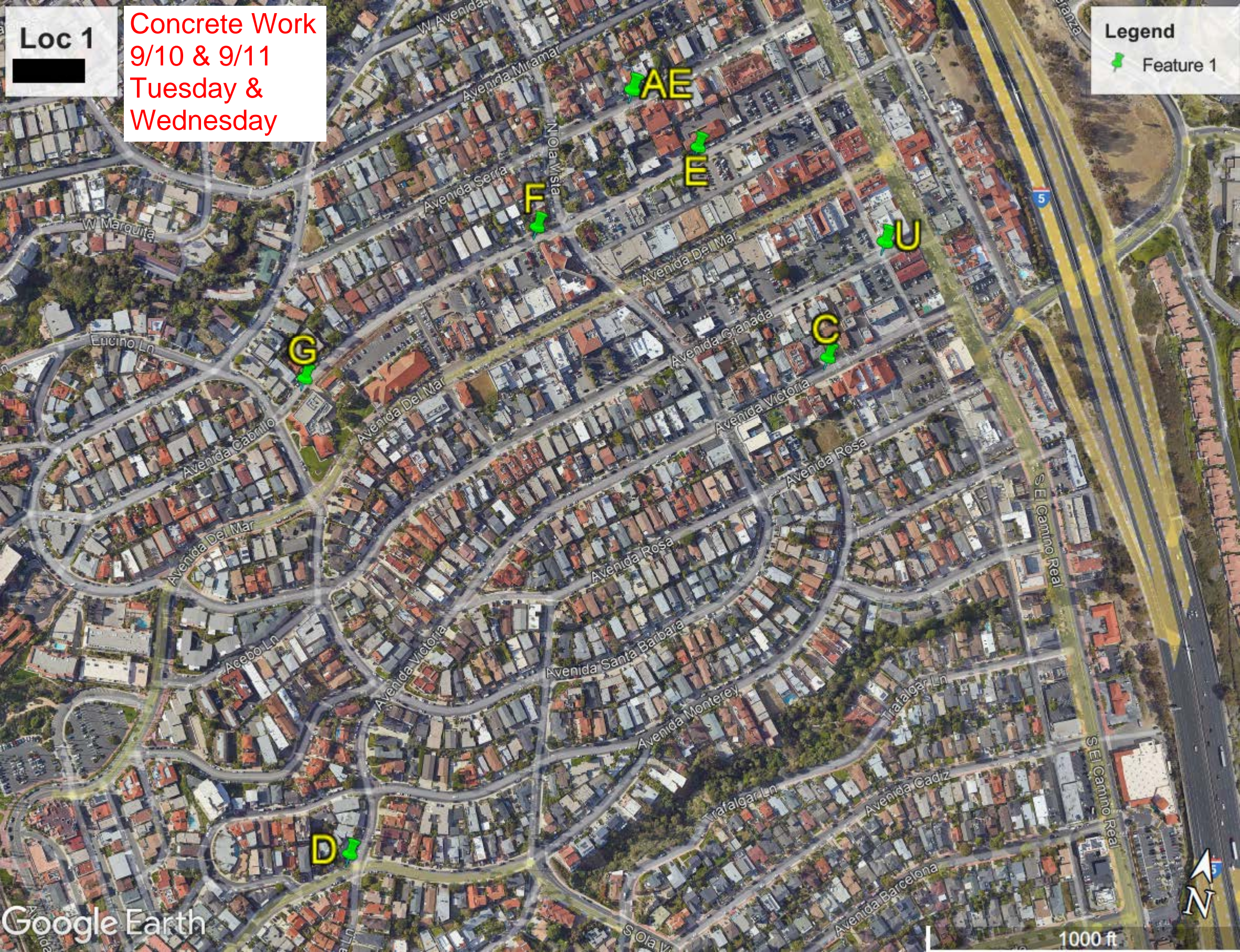
Task		Project Summary		Manual Task		Start-only		Deadline	
Split		Inactive Task		Duration-only		Finish-only		Progress	
Milestone		Inactive Milestone		Manual Summary Rollup		External Tasks		Manual Progress	
Summary		Inactive Summary		Manual Summary		External Milestone			

Loc 1

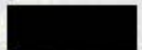
Concrete Work
9/10 & 9/11
Tuesday & Wednesday

Legend

Feature 1



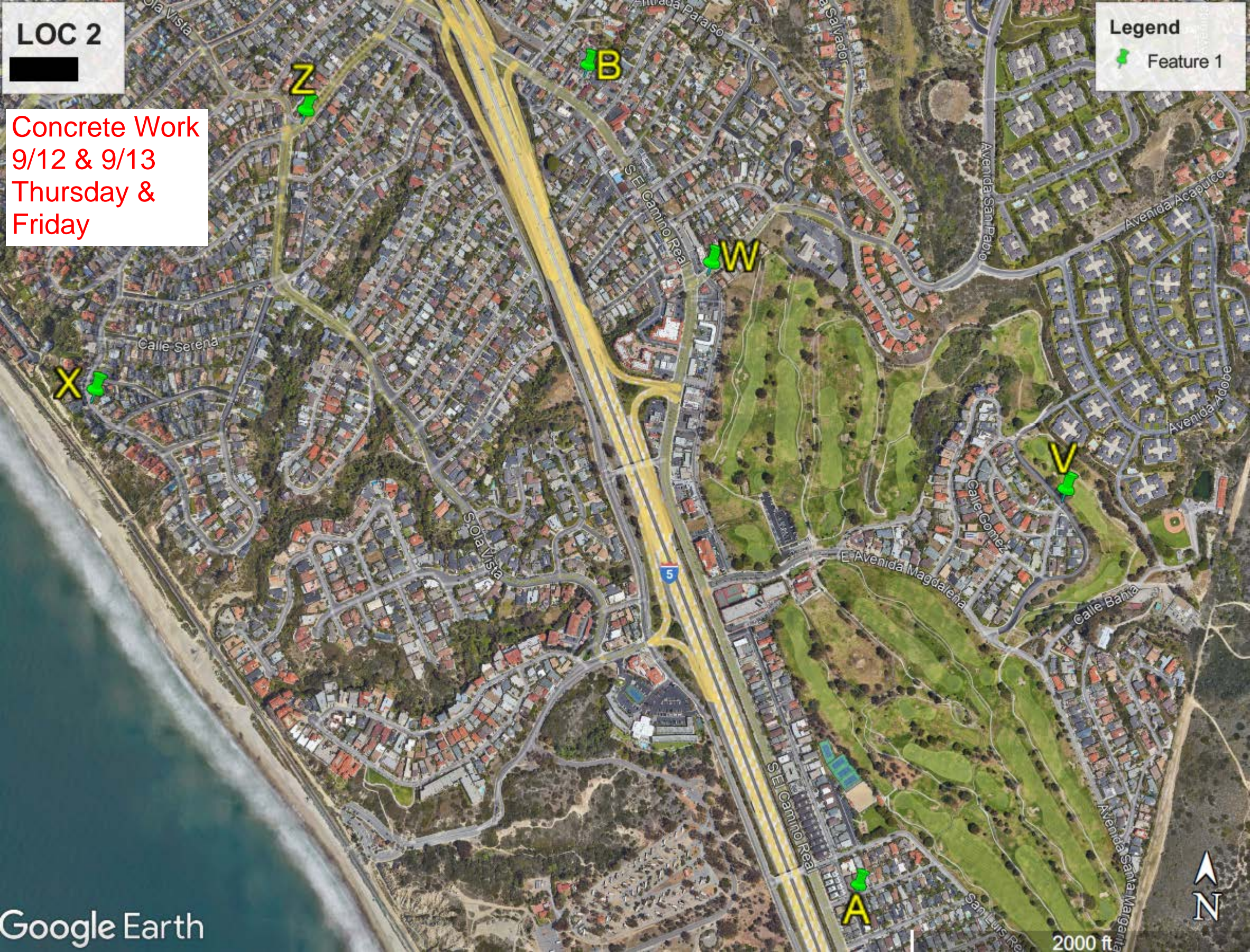
LOC 2



Concrete Work
9/12 & 9/13
Thursday &
Friday

Legend

- Feature 1



Loc 3

Concrete Work
9/16 & 9/17
Monday & Tuesday

Legend
Feature 1

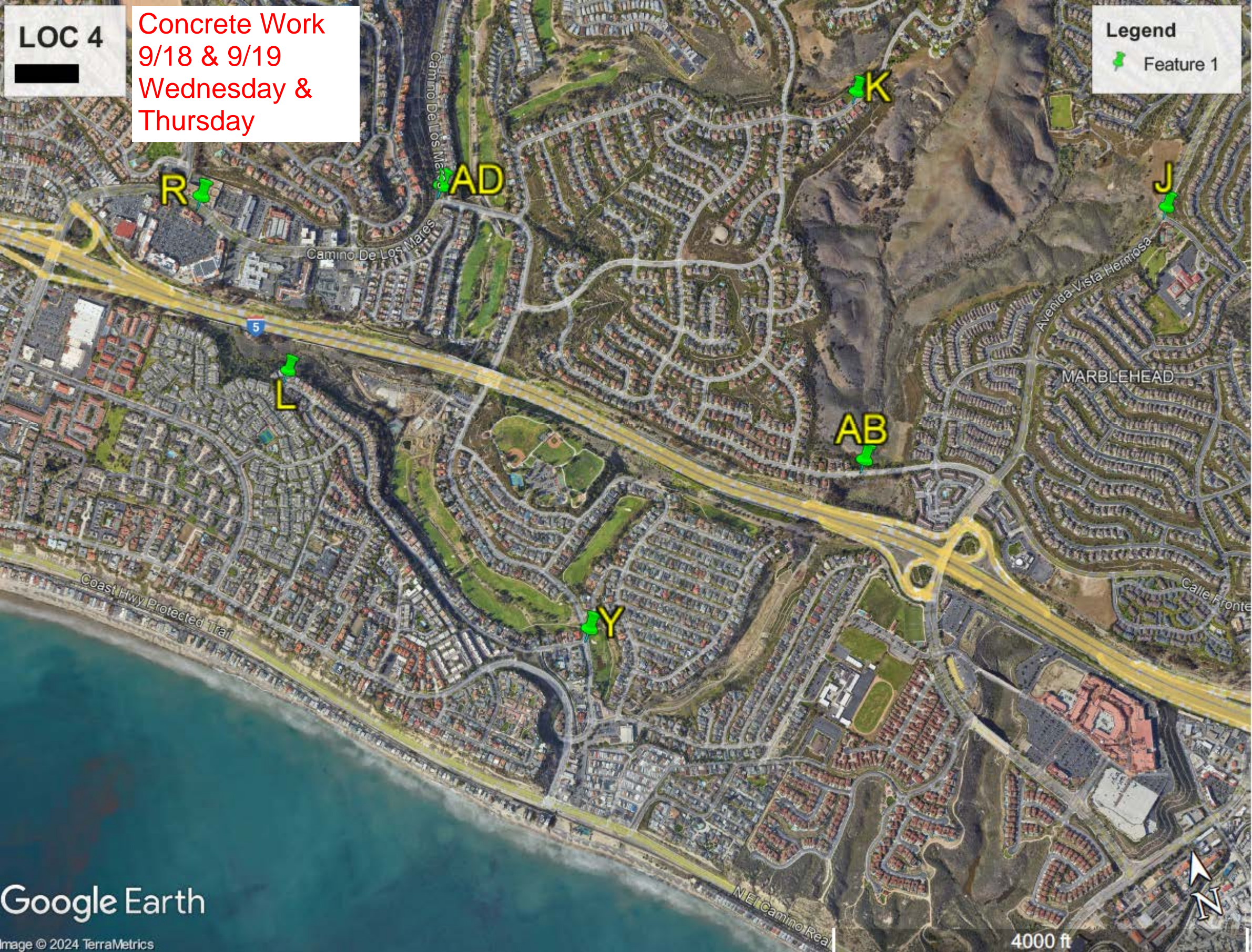


LOC 4

Concrete Work
9/18 & 9/19
Wednesday & Thursday

Legend

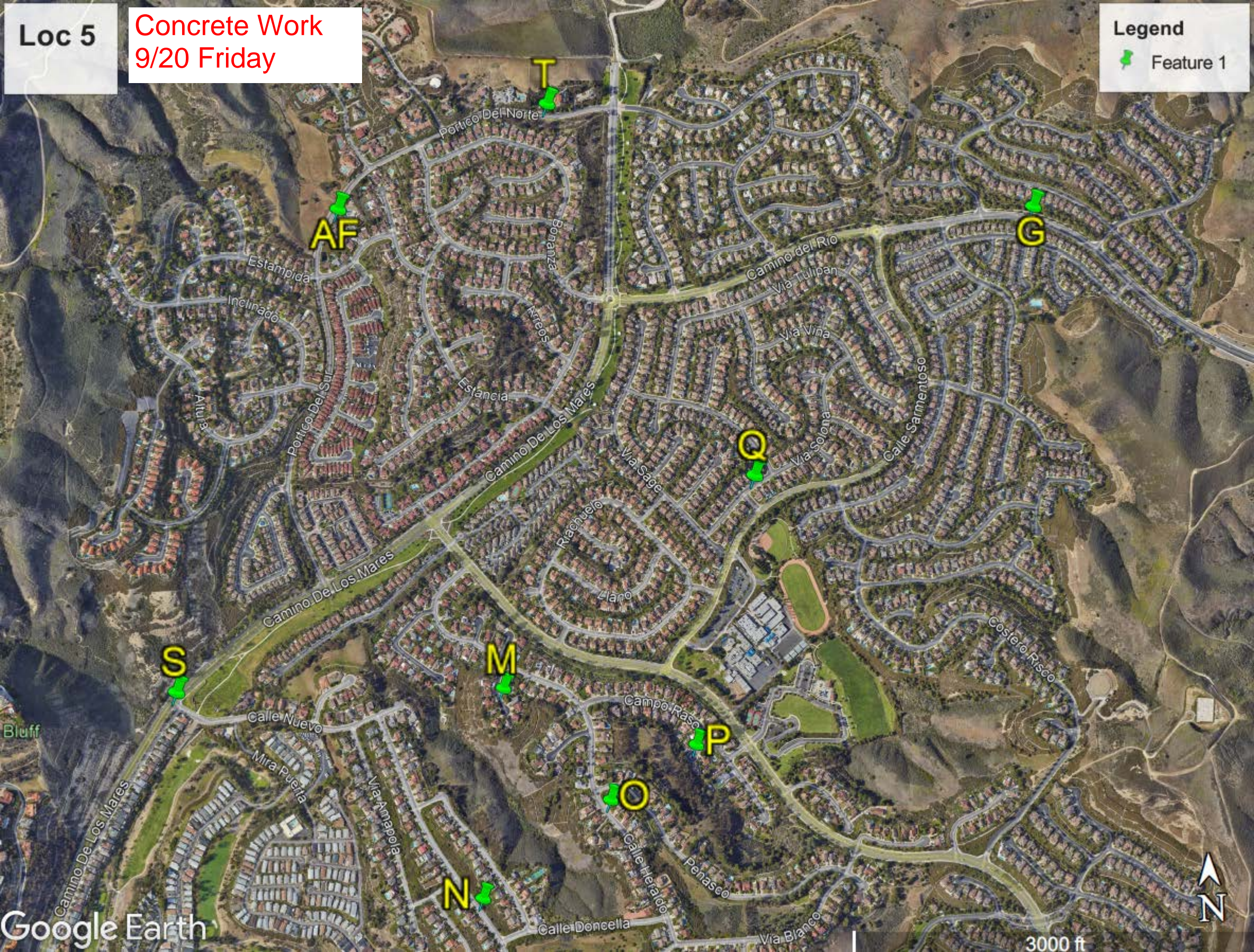
- Feature 1



Loc 5

Concrete Work
9/20 Friday

Legend
Feature 1



Concrete Locations

TYPE	DESCRIPTION	LOC	AMOUNT	UNIT	CY	CMB
Column1	Column2	Column3	Column4	Column5	Column6	Column7
C&G	101 Ave. Santa Inez	A	10	LF	0.46	0.24
Ret. Curb	101 Ave. Santa Inez	A	8	LF	0.15	0.19
S/W	101 Ave. Santa Inez	A	68	SF	0.83	1.63
Alley Intersection	101 Ave. Santa Inez at alley	A	225	SF	5.58	10.80
Curb Ramp	Ave. Santa Inez at alley	A	45	SF	0.70	1.08
Cross Gutter	Water Reclamation Plant / Corp. Yard (various locations)	AA	480	SF	11.91	17.28
Local Depression	2905 Calle Frontera SB at dip	AB	36	SF	0.67	1.30
Local Depression	2905 Calle Frontera SB at dip	AB	24.75	SF	0.46	0.89
Local Depression	Ave. Pico EB at MO2 channel east of N. El Camino Real	AC	60.2	SF	1.11	2.17
Local Depression	Camino De Los Mares WB No. 2 lane at Ave. Vaquero	AD	27	SF	0.50	0.97
Local Depression	Camino De Los Mares WB No. 2 lane at Ave. Vaquero	AD	38.5	LF	0.71	1.39
S/W	149 Ave. Serra (private walkway)	AE	25	SF	0.31	0.60
S/W	Portico Del Sur after 1st Street light after Estampida	AF	111	SF	1.36	2.66
Curb Ramp	N. El Camino Real at Calle Valle	AG	38	SF	0.59	0.91
C&G	107-109 E. Ave. San Antonio	B	89	LF	4.12	2.14
Gutter Only	1833 S. El Camino Real to E. San Antonio parking lot	B	44	LF	1.63	1.06
C&G	129-131 Ave. Victoria	C	37	LF	1.71	0.89
D/W	131 Ave. Victoria	C	15	SF	0.28	0.54
C&G	135 Ave. Victoria	C	13	LF	0.60	0.31
C&G	310 Ave. Victoria	D	20	LF	0.93	0.48
C&G	408 Ave. Victoria	D	8	LF	0.37	0.19
C&G	409-411 Ave Victoria	D	13.5	LF	0.17	0.32
S/W	409-411 Ave Victoria	D	54	SF	0.66	1.30
C&G	410 Ave. Victoria	D	29	LF	1.34	0.70
C&G	411 Ave Victoria	D	18.5	LF	0.23	0.44
S/W	411 Ave Victoria	D	12	SF	0.15	0.29
C&G	412 Ave. Victoria	D	10	LF	0.46	0.24
C&G	501 Ave. Victoria	D	50.5	LF	2.34	1.21
S/W	501-503 Ave. Victoria	D	62	SF	0.76	1.49
C&G	503-505 Ave Victoria	D	21	LF	0.97	0.50
S/W	503-505 Ave Victoria	D	84	SF	3.89	2.02
C&G	506 Ave Victoria	D	15.5	LF	0.19	0.37
C&G	125 W. Ave. Cabrillo	E	25	LF	1.16	0.60
D/W	125 W. Ave. Cabrillo	E	85.5	SF	1.58	3.08
C&G	130 W. Ave. Cabrillo	E	4	LF	0.19	0.10
S/W	130 W. Ave. Cabrillo	E	45	SF	0.55	1.08
S/W	across from 130 W. Ave. Cabrillo	E	45	SF	0.55	1.08
C&G	203 W. Ave. Cabrillo	F	13	LF	0.60	0.31
C&G	205 W. Ave. Cabrillo	F	22	LF	1.02	0.53
C&G	212 W. Ave. Cabrillo	F	34	LF	1.57	0.82
S/W	Camino Del Rio EB Across from Calle Del Cima at Catch Basin	G	11.25	SF	0.42	0.27
S/W	Camino Del Rio EB across from Del Cima at catch basin	G	23.85	SF	0.29	0.57
S/W	Camino Del Rio EB across from Del Vistazo at catch basin	G	33.75	SF	0.41	0.81

Ret. Curb	114 Ave Aragon	H	14.5	LF	0.18	0.35
C&G	114 Ave Aragon at Ave Pelayo	H	16	LF	0.20	0.38
Curb Ramp	114 Ave Aragon at Ave Pelayo	H	71.5	SF	2.65	1.72
C&G	Ave. Aragon at 102 Ave. Pelayo	H	24.5	LF	1.13	0.59
Curb Ramp	Ave. Aragon at 102 Ave. Pelayo	H	54	SF	0.84	1.30
Ret. Curb	Ave. Aragon at 102 Ave. Pelayo	H	14	LF	0.26	0.34
S/W	Ave. Presidio NB below Escuela at local depression	I	75.25	SF	0.92	1.81
C&G	Ave. Presidio NB below Escuela at local depression	I	6	LF	0.28	0.14
Local Depression	Ave. Presidio NB north of Calle Escuela	I	23	SF	0.43	0.83
S/W	Via Turqueza SB at catch basin	J	59	SF	0.72	1.42
D/W	822 Calle Vallarta	K	100	SF	1.85	3.60
S/W	822-824 Calle Vallarta	K	120	SF	1.47	2.88
D/W	824 Calle Vallarta	K	100	SF	1.85	3.60
S/W	824-826 Calle Vallarta	K	40	SF	0.49	0.96
C&G	826-822 Calle Vallarta 97 plates required	K	97	LF	4.49	2.33
D/W	3310 Calle Grande Vista	L	100	SF	1.85	3.60
C&G	3310-3311 Calle Grande Vista, construct A2-6 (W=24")	L	145	LF	6.71	3.48
S/W	3310-3312 Calle Grande Vista	L	32	SF	0.39	0.77
D/W	3311 Calle Grande Vista	L	100	SF	1.85	3.60
S/W	3311-3309 Calle Grande Vista	L	90	SF	1.10	2.16
D/W	3312 Calle Grande Vista	L	100	SF	1.85	3.60
S/W	3312-3314 Calle Grande Vista	L	48	SF	0.59	1.15
D/W	3314 Calle Grande Vista	L	100	SF	1.85	3.60
S/W	3314-3311 Calle Grande Vista	L	76	SF	0.93	1.82
C&G	1103 Otero	M	31	LF	1.44	0.74
C&G	1110 Otero	M	29	LF	1.34	0.70
S/W	1110 Otero	M	166.5	SF	2.04	4.00
C&G	across from 2860 Calle Guadalajara	N	15	LF	0.69	0.36
S/W	2867 Calle Heraldo	O	20.25	SF	0.25	0.49
S/W	2868-2870 Calle Heraldo	O	99	SF	1.21	2.38
C&G	2869 Calle Heraldo	O	14	LF	0.65	0.34
Local Depression	2869 Calle Heraldo	O	25.2	SF	0.47	0.91
S/W	2869 Calle Heraldo	O	59.4	SF	0.73	1.43
S/W	1202 Charco	P	95	SF	1.16	2.28
C&G	1202 Charco	P	5	LF	0.23	0.12
C&G	1204 Charco	P	4	LF	0.05	0.10
S/W	1204 Charco	P	30.15	SF	0.37	0.72
S/W	2015 Via Solona	Q	7.5	SF	0.09	0.18
S/W	2015 Via Solona behind new sidewalk at fire hydrant	Q	9	SF	0.11	0.22
S/W	638 Camino De Los Mares Behind Trader Joes	R	56	SF	0.68	1.34
S/W	638 Camino De Los Mares behind Trader Joe's	R	42.4	SF	0.52	1.02
C&G	Camino De Los Mares at Calle Nuevo	S	8	LF	0.10	0.19
S/W	Camino De Los Mares EB at Calle Nuevo	S	32.68	SF	0.40	0.78
Ret. Curb	Camino De Los Mares EB at Calle Nuevo	S	3.8	LF	0.07	0.09
C&G	EB Camino De Los Mares at Calle Nuevo	S	10.4	LF	0.13	0.25
Local Depression	3206 Portico Del Norte near Camino De Los Mares	T	9	SF	0.17	0.32
S/W	Portico Del Norte at Camino De Los Mares at Catch Basin	T	12.15	SF	0.56	0.29
Alley Intersection	Ave. Granada at alley (south side)	U	216	SF	5.36	10.37

S/W	Ave. Granada at alley (south side)	U	45	SF	0.55	1.08
Curb Ramp	Ave. Granada at alley (south side)	U	45	SF	0.70	1.08
Curb Ramp	Ave. Granada at alley (south side)	U	45	SF	0.70	1.08
S/W	Ave. Granada at alley (south side)	U	45	SF	0.55	1.08
Ret. Curb	Ave. Granada at alley new curb ramps	U	18	LF	0.33	0.43
Cross Gutter	Ardilla Lane at E. Ave. Magdalena	V	200	SF	4.96	7.20
Cross Gutter	E. San Gabriel at alley	W	132	SF	3.28	4.75
Cross Gutter	1816 Calle De Los Alamos	X	28	SF	0.69	1.01
Cross Gutter	Calle Grande Vista at Ave. Vaquero	Y	65	SF	1.61	2.34
Cross Gutter	Ave. Valencia at 1407 S. Ola Vista	Z	44	SF	1.09	1.58
Cross Gutter	Ave. Valencia at 1407 S. Ola Vista	Z	160	SF	3.97	5.76
Cross Gutter	Ave. Valencia at 1407 S. Ola Vista	Z	40	SF	0.99	1.44
Cross Gutter	Ave. Valencia at 1407 S. Ola Vista	Z	66	SF	1.64	2.38
				Totals	129.22	172.67

WM boxes
2868 Calle Heraldo (City furnished J&R W5F Concrete Meter Box)
2870 Calle Heraldo (City furnished J&R W5F Concrete Meter Box)
2867 Calle Heraldo (City furnished J&R W5F Concrete Meter Box)
1110 Otero (City furnished J&R W5-1/2F Concrete Meter Box)
3311 Calle Grande Vista (City furnished J&R W5F Concrete Meter Box)
3314 Calle Grande Vista (City furnished J&R W5F Concrete Meter Box)
3312 Calle Grande Vista (City furnished J&R W5F Concrete Meter Box)
824 Calle Vallarta (City furnished J&R W5F Concrete Meter Box)
131 Ave. Victoria (City furnished J&R W5F Concrete Meter Box)
409 Ave Victoria
411-A Ave. Victoria (City furnished J&R W5F Concrete Meter Box)
411-B Ave Victoria
411-C Ave Victoria
501 Ave. Victoria (City furnished J&R W5F Concrete Meter Box)
503 Ave Victoria
505 Ave Victoria
Ave. Granada at curb ramp (south) (City furnished J&R W5F Concrete Meter Box)