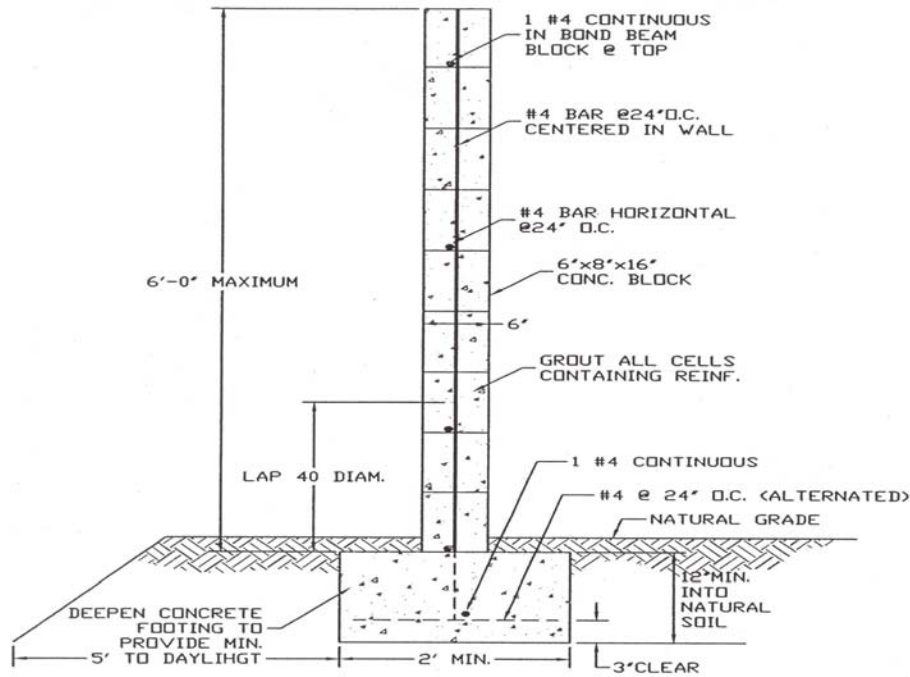




# Freestanding 6' Block Wall/Fence 6" Block (Non-Retaining)

# BI-7



**NOTES:**

1. Masonry units shall be grade A conforming to ASTM C90 and manufactured in accordance with concrete masonry association standards.
2. Portland Cement concrete shall conform to ASTM C150
3. Concrete shall have a minimum strength of 4,500 psi at 28 days (no Deputy Inspection required).
4. Mortar shall be freshly prepared and uniformly mixed in a ratio of 1 part cement,  $\frac{1}{2}$  part lime putty, 4  $\frac{1}{2}$  parts sand and shall conform to ASTM C270. If plastic type cement is used, the lime putty shall be omitted.
5. Grout shall be of fluid consistency, Ratio by volumes 1 part cement, 3 parts sand or 1 part cement, 3 parts sand and 2 parts pea gravel.
6. Reinforcing steel shall be deformed bars conforming to ASTM A615 grade 40. Wire reinforcing shall conform to ASTM A185.
7. No sections of the wall may be within 3 feet of any fire hydrant, post indicator valve and/or Fire Department connection areas.