

## in this issue >>>

- *Mudslide Incident Response*
- *Forklift Technical Rescue*
- *San Bernardino Storm Response*
- *Incidents by Category*
- *Safety Message*
- *Incident Responses*
- *Community Outreach*



**ORANGE COUNTY FIRE AUTHORITY**  
**DIVISION 3, BATTALION 6**  
**DIVISION CHIEF CHEYNE MAULE**

A Quarterly Update of What's Going on in Division 3

# San Clemente 2023 1<sup>st</sup> Quarter

## Keep in Touch

**Division Chief Cheyne Maule**  
Office: (949) 347-2273  
Email: [CheyneMaule@ocfa.org](mailto:CheyneMaule@ocfa.org)

**Battalion Chief Neal McCann (A Shift)**  
Office: (949) 487-0102  
Email: [NealMcCann@ocfa.org](mailto:NealMcCann@ocfa.org)

**Battalion Chief Matt Schuetz (B Shift)**  
Office: (949) 487-0102  
Email: [MatthewSchuetz@ocfa.org](mailto:MatthewSchuetz@ocfa.org)

**Administrative Captain: Jeremy Vallone**  
Office: (949) 347-2275  
Email: [JeremyVallone@ocfa.org](mailto:JeremyVallone@ocfa.org)

**Division Administrative Assistant**  
**Michelle Schneider**  
Office: (949) 347-2277  
Email: [MichelleSchneider@ocfa.org](mailto:MichelleSchneider@ocfa.org)

**Community Relations/ Education**  
**Specialist**  
**Chris Barry**  
Mobile: (949) 919-2759  
Email: [ChristopherBarry@ocfa.org](mailto:ChristopherBarry@ocfa.org)

## March's Mudslide Response



On March 15, 2023, OCFA crews were dispatched the street of Buena Vista in San Clemente for a reported mudslide with homes potentially sliding off the cliff. Crews arrived to find a large portion of the cliffs behind the homes that had broken off, and portions of the residences' decking laying at the bottom of the cliff. Crews immediately coordinated with OCSD to begin evacuations of the effected property, as well as the properties adjacent to the impact area to assure that all occupants were safely evacuated. Along with the Fire Department response was OCFA Truck 56, which is an Urban Search & Rescue truck. T56 and its specialists worked to evaluate the stability of the buildings and provide expertise in the evaluation of what homes should be evacuated. Crews also worked to drain the pool in the backyard of the main effected house in an effort to alleviate any more impact on the slopes behind the home. Due to the rapid response and coordination between OCFA, OCSD and City of San Clemente staff, there were no injuries reported due to this mudslide to not only the residents, but personnel on scene as well.

## *San Clemente Technical Rescue in March*

On March 26<sup>th</sup> the OCFA received a call for a forklift that had overturned and trapped its operator near the cross street of Avenida Pico and La Pata. A Technical Rescue response was dispatched to include Truck 59, Engine 60, Truck 56, Heavy Rescue 6 and Battalion 6. Truck 59 arrived on scene to find a male with his legs trapped under the overturned equipment. Truck 59 quickly initiated emergency medical care with their paramedics and began devising a plan to lift the forklift enough to remove the patient. Truck 56, one of the OCFA's Technical Rescue Trucks (TRT), arrived and collaborated with Truck 59 to begin the extrication. The 20,000+ lb. forklift was lifted enough to remove the patient and quickly transport to the hospital. The entire process took just over 20 minutes from the arrival of the first unit to the patient being transported. The victim being trapped under the forklift on an angled ground, and the fact that the forklift was much heavier than the average forklift made this incident unique and complicated. The quick thinking and collaborative efforts of all personnel on scene led to a successful operation.

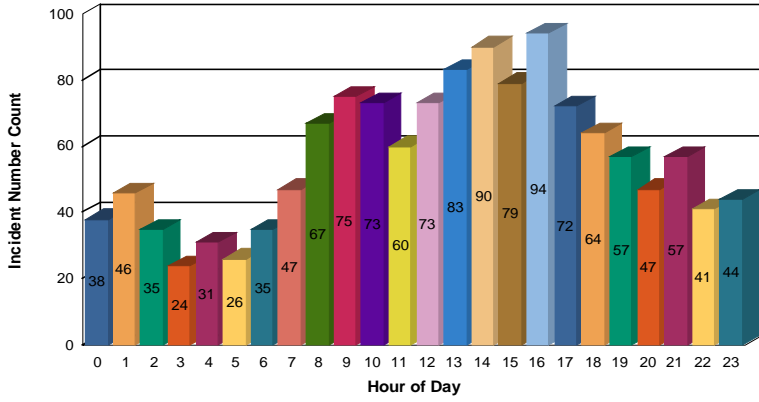


*Not Your  
Typical  
Incident, But  
Here for All*

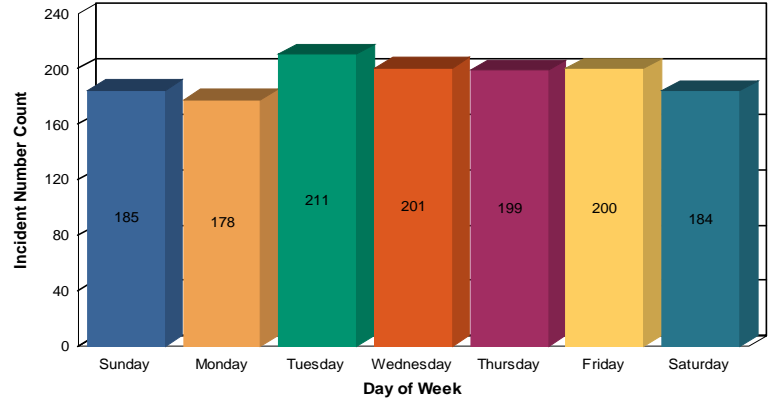
Through the State Master Mutual Aid System, the OCFA proudly sent our two firefighter handcrews, a CAL-OES Type 6 strike team of five patrols and a handful of overhead personnel to help with the historic March winter storm in the San Bernardino mountains (64 personnel total). It is a continuous effort as they worked through extreme temperatures, working tirelessly opening roads for 911 access, digging out critical infrastructure, and getting elderly residents out where trapped. In addition, the crews have also assisted with responding to calls for service ranging from emergency calls to delivering much-needed food and medicine to people in need. They worked alongside San Bernardino County Fire and many other agencies who have all come together for the community.

# Incidents By Category

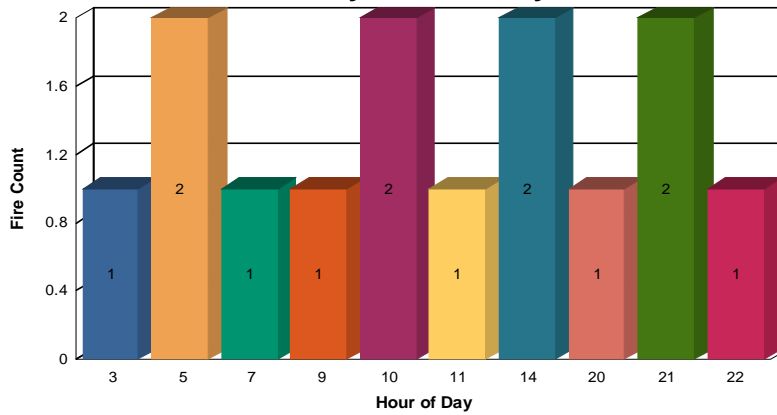
## Incident Count by Hour of Day



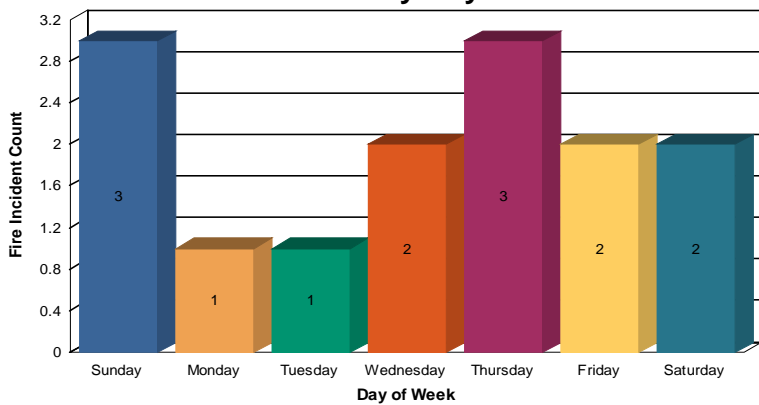
## Incident By Day of Week



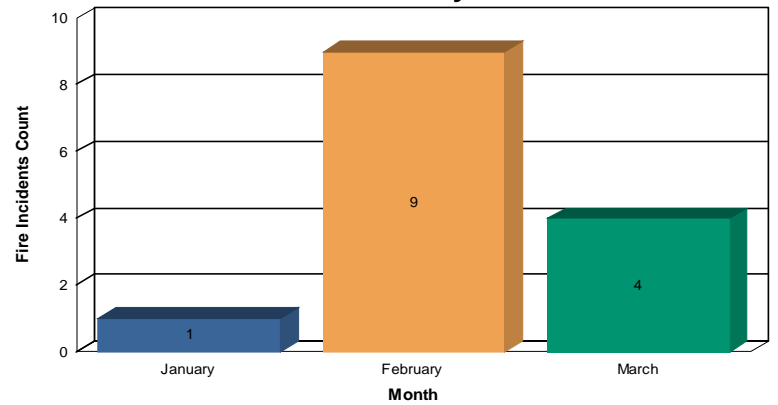
## Fires by Hour of Day



## Fires Incidents by Day of Week



## Fires Incidents by Month



# LITHIUM-ION BATTERIES



In today's technology driven world, lithium-ion batteries are powering electric vehicles, cell phones, e-bikes, laptops, toys, smoke alarms and power tools. These batteries can be dangerous if they overheat, and can cause a fire or explosion. Keep yourself and your family safe by following these safety tips.



According to the Data Bridge Market Research, the global lithium-ion battery market was valued at 6.70 billion in 2021 and is expected to reach 26.28 billion by 2029.



Orange County  
Fire Authority

(714) 573-6200  
ocfa.org



## Lithium-Ion Battery Fires:

- Emit toxic gasses within seconds
- Burn hotter and faster than others
- Can't be smothered like other fires
- Can cause explosions within seconds
- Can reignite up to 21 days later!

## Safety Tips

- Purchase batteries that are listed by a Nationally Recognized Testing Lab (NRTL)
- Know the manufacturer instructions and safety information for use, storage, charging and maintenance
- Never overload your outlet when charging any device with a lithium-ion battery
- Never place the batteries in direct sunlight or a hot vehicle
- Store batteries in a cool, dry location

## Charging and Disposal

- Charge the device properly and only with the cords that came with the device
- Unplug the device once it is fully charged
- Do not charge batteries when the environment is below freezing (32°F) or too hot (130°F)
- Never charge the device under a pillow, on your bed or on a couch.
- Keep lithium-ion batteries away from combustible materials when charging.
- Never throw lithium-ion batteries in the trash
- Contact your local recycling center or waste management department for proper disposal
- Do not put discarded batteries together in a container or pile

## Warning Signs

- Unusual odor
- Change in color
- Too hot to the touch
- Change in shape
- Not keeping a charge
- Smoking or sparking when plugging in
- Unusual Noises (popping, hissing, buzzing)
- Leaking of liquid

## If You Have a Fire From a Lithium-Ion Battery

- Leave the area immediately as the batteries emit toxic gasses and burn extremely hot, with explosions occurring in seconds
- Call 9-1-1
- DO NOT try to fight or extinguish the fire

# Incident Responses

CALL TYPE	JAN	FEB	MAR	APR	MAY	JUN	JUL	AUG	SEP	OCT	NOV	DEC	Total	Monthly Average
Medical Aid - Automatic Paramedic Alarm	8	13	12										33	11
Medical Aid- Back to Bed/ Lift Assist	16	10	13										39	13
Medical Aid- Cardiac (Chest Pain, Cardiac Arrest)	42	39	29										110	37
Medical Aid - Stroke (Unconscious, Altered Mental State)	58	58	47										163	54
Medical Aid- Diabetic Emergency	7	6	6										19	6
Medical Aid- Respiratory (Respiratory Arrest, Difficulty Breathing)	43	38	38										119	40
Medical Aid- Fall	93	61	70										224	75
Medical Aid - Illness (Sick Person, Injury, Illness)	25	37	38										100	33
Medical Aid- Abdominal Pain	32	24	25										81	27
Medical Aid- Seizure	10	14	12										36	12
Medical Aid - Misc. (Choking, Headache, Pregnancy, Bleeding, Assault, Burn, Intoxication, Psychiatric, Environmental)	51	43	49										143	48
Medical Aid- Traffic Collision (Auto vs Auto, Auto vs Pedestrian)	25	32	39										96	32
Fire - Structure	3	2	5										10	3
Fire - Vehicle/ Dumpster	0	6	4										10	3
Fire- Vegetation, Brush, Tree, Bush, Misc.	6	7	4										17	6
Service Call- Misc. (Odor Check, Stuck Elevator, Automatic Fire Alarm)	60	47	51										158	53
<b>Total Monthly Incidents</b>	<b>479</b>	<b>437</b>	<b>442</b>	<b>0</b>	<b>0</b>	<b>0</b>	<b>0</b>	<b>0</b>	<b>0</b>	<b>0</b>	<b>0</b>	<b>0</b>	<b>1358</b>	<b>453</b>

CALL TYPE	JAN	FEB	MAR	APR	MAY	JUN	JUL	AUG	SEP	OCT	NOV	DEC	TOTAL	MO. AVG.
Medical Aids	410	375	378	0	0	0	0	0	0	0	0	0	1163	388
Fires	9	15	13	0	0	0	0	0	0	0	0	0	37	12
Misc	60	47	51	0	0	0	0	0	0	0	0	0	158	53

## Community Outreach



### Some 1<sup>st</sup> Quarter Events:

- On January 25<sup>th</sup> the crew from station 60 were honored to visit with Tom Fitzpatrick on his birthday at the Dorothy Visser Senior Center. Tom, a WWII Vet that flew B-2 bombers, turned 100 years old that day!
- On February 3<sup>rd</sup> the crew from station 60 provided a tour of the fire station to 16 elementary-aged children from Our Lady of Fatima.
- On March 7<sup>th</sup> the crew from station 59 gave 20 pre-schoolers and 20 adults a tour of the station.