

ARBORIST TREE ASSESSMENT REPORT

**MEMORIAL CARE
SENIOR RESIDENTIAL DEVELOPMENT PROJECT
SAN CLEMENTE, CALIFORNIA**

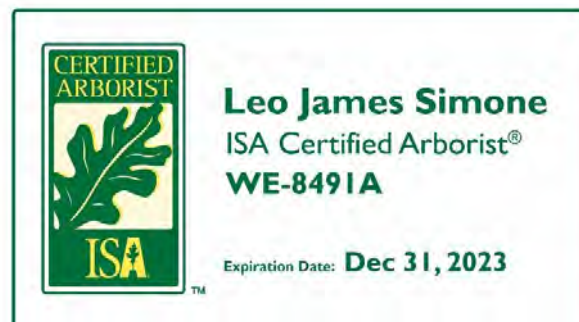
Prepared for:

Thomas J. Leary
Senior Vice President & Chief Legal Officer
17360 Brookhurst Street
Fountain Valley, California 92708

Prepared by:

LSA
Leo Simone, Associate Biologist
ISA Certified Arborist WE-8491A
20 Executive Park, Suite 200
Irvine, California 92614
(949) 553-0666

LSA Project No. MEA2203



LSA

August 2022

TABLE OF CONTENTS

INTRODUCTION	1
STUDY AREA	1
METHODS.....	1
DISCUSSION	2
Health Condition of Surveyed Trees.....	3
Cal-IPC Invasive Tree	3
Tree Preservation Consideration	3
Management of Retained Tree(s)	4
Monitoring Retained Tree(s).....	4
DISCLOSURE STATEMENT	5

FIGURES

Figure 1: Project Location	6
Figure 2: Tree Survey Results.....	7

APPENDICES

- A: TREE ATTRIBUTE TABLE
- B: REPRESENTATIVE TREE PHOTOGRAPHS

ARBORIST TREE ASSESSMENT SENIOR RESIDENTIAL DEVELOPMENT PROJECT, MEMORIAL CARE

INTRODUCTION

This Arborist Report documents the findings of an LSA on-site tree assessment survey of the 175 ornamental landscape trees at the Memorial Care Senior Residential Development Project (project) site at 654 Camino De Los Mares, in San Clemente, California, as required by the City of San Clemente (City) Trees Ordinances (Ord. 17.64.060 and 17.84.020(B)). This Arborist Report was prepared per the request of Memorial Care. The results of the tree assessment will fulfill the City's requirements.

The 175 ornamental landscape trees, comprising 20 ornamental species that are all common to Southern California, were derived from commercial nursery stock. Table A (Appendix A) identifies each surveyed tree by identification number, scientific name, common name, diameter at breast height (DBH), estimated height, and condition (good, fair, or poor), including additional remarks where warranted. In addition to Table A, relevant information regarding the assessed trees is discussed below.

The project location and vicinity map are shown on Figure 1 (all figures are provided at the end of the report text). Figure 2 shows the project boundary and tree locations on an aerial photograph base map at a scale of 1 inch = 75 feet.

STUDY AREA

The 6.63-acre project site is located on the south side of Camino De Los Mares, approximately 545 feet west of the Marbella intersection. The project site is depicted on Figure 1 on the United States Geological Survey (USGS) *Dana Point, California* 7.5-minute topographic quadrangle map in Township 8 South, Range 7 West, Section 19, San Bernardino Baseline and Meridian.

The project will demolish an existing former hospital building and construct in its place a 250-dwelling-unit senior housing project with two residential apartment buildings and a 7,500-square-foot, two-story medical office building. Development of the project will involve demolition of the existing building and some site parking lot improvements; new site grading; construction of the new structures; and installation of new wet and dry utilities, landscaping, and lighting.

METHODS

The on-site tree assessment survey was conducted on May 9, 2022, by LSA Biologists Leo Simone (International Society of Arboriculture [ISA] Certified Arborist and ISA Qualified Tree Risk Assessor WE-8491A) and Heather Monteleone. The tree assessment data were collected by LSA using the Environmental Systems Research Institute (ESRI) ArcGIS Field Maps application with a custom arborist data collection format, as well as physical measurements taken during the field visit. The entire study area was surveyed on foot, and all 175 subject trees were assessed, assigned a number, and evaluated for the following attributes:

- Location (using a global positioning system [GPS] unit)
- Tree species
- Diameter at 54 inches above the lowest point where the trunk meets the soil (DBH)
- Tree height
- Condition/health (good, fair, poor)
- Other related information

DISCUSSION

The on-site tree assessment of the 175 ornamental landscape trees comprising 20 species included:

- 2 Aleppo pines (*Pinus halepensis*): 2 good
- 1 Brazilian pepper (*Schinus terebinthifolius*): 1 good
- 6 Canary Island date palms (*Phoenix canariensis*): 4 good and 2 fair
- 23 Carrotwoods (*Cupaniopsis anacardioides*): 11 fair and 12 poor
- 27 Crape myrtles (*Lagerstroemia indica*): 7 good, 15 fair, and 5 poor
- 1 Crimson bottlebrush (*Calistemon citrus*): 1 good
- 5 Date palms (*Phoenix dactylifolia*): 5 good
- 10 Flowering pears (*Pyrus calleryana bradford*): 1 good, 8 fair, and 1 poor
- 14 Italian cypress (*Cupressus sempervirens*): 14 good
- 1 Loquat (*Eriobotrya japonica*): 1 good
- 3 Mexican fan palms (*Washingtonia robusta*): 3 fair
- 8 Mousehole trees (*Myoporum laetum*): 7 good and 1 poor
- 1 New Zealand tree fern (*Dicksonia squarrosa*): 1 poor
- 12 Pigmy date palms (*Phoenix robilini*): 10 good, 1 fair, and 1 poor
- 28 Queen palms (*Syagrus romanzoffiana*): 20 good, 6 fair, and 2 poor
- 16 Spotted gum trees (*Corymbia maculate*): 1 good, 10 fair, and 5 poor
- 1 Sydney golden wattle (*Acacia longifolia*): 1 good
- 6 Traveler's palms (*Ravenala madagascarensis*): 5 good and 1 fair
- 1 Weeping fig (*Ficus benjamina*): 1 poor
- 10 Yew pines (*Podocarpus macrophyllus*): 4 good and 6 fair

The trunk locations are represented by colored and numbered icons on Figure 2. Appendix B provides 171 photographs of the surveyed trees. The following four trees were not photographed: Tree 113 – Queen palm, Trees 38 and 174 – Pigmy date palms, and Tree 40 – Traveler's palm. Due to intertwined canopies and limited vantage points, some individual trees were difficult to photograph. The trunk diameters of the surveyed trees ranged from 4 to 42 inches DBH, and the heights ranged from 4 to 70 feet. Table A (Appendix A) summarizes the inventory results and relevant data for the 175 total surveyed trees.

Health Condition of Surveyed Trees

The health condition of the 175 surveyed trees are as follows: 77 trees are in good condition, 69 are in fair condition, and 29 are in poor condition. The trees in poor condition are the result of a combination of factors, including compacted soil and limited soil volume with parking lot planters sized too small to accommodate the particular tree species, thereby restricting the tree roots' ability to access needed water and nutrients for healthy development. Tree 15, Tree 24 (carrotwood), and 154 (spotted gum) have been topped, which has seriously affected the tree's health.

Tree 148, which is a large 65-foot-tall spotted gum, is in very poor health with over half of the tree in a necrotic state. The tree is located near the northeast corner of the site, adjacent to a high-use roadway and shopping center. A tree in such condition may fail without warning and poses a risk to public health and safety. A Tree Risk Assessment conducted by a Certified Arborist credentialed to conduct Tree Risk Assessments is recommended if the tree is not scheduled for removal.

Cal-IPC Invasive Tree

Three of the species surveyed (i.e., Mexican fan palm [3 trees], Canary date palm [6 trees], and mousehole tree [8 trees]) are classified as invasive by the California Invasive Plant Council (Cal-IPC). These invasive trees were originally introduced as ornamentals. The horticultural industry, recognizing this environmental threat, joined conservation biologists in 2001 at the national workshop "Linking Ecology and Horticulture to Prevent Plant Invasions." This workshop resulted in the Saint Louis Declaration on Invasive Plant Species, which describes voluntary codes of conduct for professionals and the gardening public.

In 2002, Cal-IPC began developing its ability to educate the California horticultural community about invasive plants. With horticultural partners, Cal-IPC developed a series of "Don't Plant a Pest" brochures offering landscaping alternatives for invasive plants that are still used as ornamentals in California. In 2004, Cal-IPC joined with Sustainable Conservation and other nongovernmental organizations, agencies, universities, and industry trade organizations to form the California Horticultural Invasives Prevention (Cal-HIP) partnership. In 2007, Cal-HIP partners established the PlantRight program, which promotes voluntary measures for avoiding invasive plants in landscaping.

Habitat loss and invasive plants are the leading cause of native biodiversity loss. Invasive plant species spread quickly and can displace native plants, prevent native plant growth, and create monocultures. Invasive plants cause biological pollution by reducing plant species diversity.

Because of the project's proximity to natural areas and protected wetlands, it is our recommendation that if any of the above-referenced invasive tree species are included on the Cal-IPC invasive species list, they need to be considered for removal, their mitigation should be with tree species that will not adversely impact natural ecosystems, and they should not be replaced with in-kind invasive species.

Tree Preservation Consideration

All the tree species found on site are common nonnative ornamental landscape trees that are readily available at commercial nurseries. Most of the trees are growing in less-than-optimal

conditions, and new landscaping with drought tolerant plant material should be considered. However, Tree 146 – Aleppo pine is a large, healthy specimen tree that is approximately 70 feet tall with a DBH of 42 inches. The retention of Tree 146 – Aleppo pine should be considered if the project design allows.

Management of Retained Tree(s)

The tree's root zone should be used to calculate the tree protective root zone (PRZ). To calculate the PRZ, the tree's DBH is first measured. Then that measurement is multiplied by 1.5, with the resulting product expressed in feet. For Tree 146 – Aleppo pine, with a DBH of 42 inches, the PRZ radius from the base of the tree is 63 feet, with the PRZ area of 12,463 square feet.

The City may impose measures or requirements to preserve and protect the health of the trees that remain, and new trees planted to replace those removed. Measures to protect the retained tree during construction should include:

- Erecting temporary or permanent protective devices around the tree(s) so that no substantial disruption or removal occurs to the structural or feeder roots of the tree
- Prohibiting mechanical activity within the root zone of the tree
- Prohibiting placement of fill material within the root zone of the tree unless an adequate drainage and aerification system is provided for the tree to the City's satisfaction

Monitoring Retained Tree(s)

If tree(s) are to be retained, monitoring of those trees should be conducted during all grading and construction activities at intervals warranted by the site conditions and level of activity. The monitoring program should consist of quantitative and qualitative observations useful in identifying stress-related responses of trees. Following construction, annual monitoring should be performed for a minimum of 5 years, as warranted by site conditions, to ensure the continued health of the trees. A qualified arborist should conduct all monitoring. It should be noted that a tree with damaged roots may not show symptoms of decline for several years. Along with other important functions, roots serve to hold a tree firmly in place. Anything that changes the structural support provided by the root system decreases the stability of the tree. It is usually impossible to predict the exact effect that root damage will have on a particular tree, or when an effect will occur. A tree may fail a few months or many years following root injury, or it may never fail. Tree species vary in their ability to tolerate root disturbances. Also, root systems are not exactly alike; a tree with a deep, extensive root system will typically tolerate more disturbance than a neighboring tree with a poorly developed root system. Therefore, LSA recommends that the above-referenced Aleppo pine tree be inspected periodically over the next 5 years to monitor its health.

DISCLOSURE STATEMENT

I have personally inspected the property referred to in this report and have stated my findings accurately. I have no current or prospective interest in the vegetation or the property, and I have no personal interest or bias with respect to the parties involved. The analysis, opinions, and conclusions stated here are my own and are based on current scientific procedures and facts. My compensation is not contingent upon the reporting of a predetermined conclusion that favors the cause of the client or any other party or, upon the results of the assessment, the attainment of stipulated results or the occurrence of any subsequent events. My analysis, opinions, and conclusion were developed according to commonly accepted arboricultural practices.

I CERTIFY THAT THE INFORMATION IN THIS INDIGENOUS TREE REPORT AND ATTACHED EXHIBITS FULLY AND ACCURATELY REPRESENT MY WORK:

SURVEYOR:

**ISA CERTIFICATION
NUMBER:**

DATE:


Leo Simone

WE-8491A

August 8, 2022

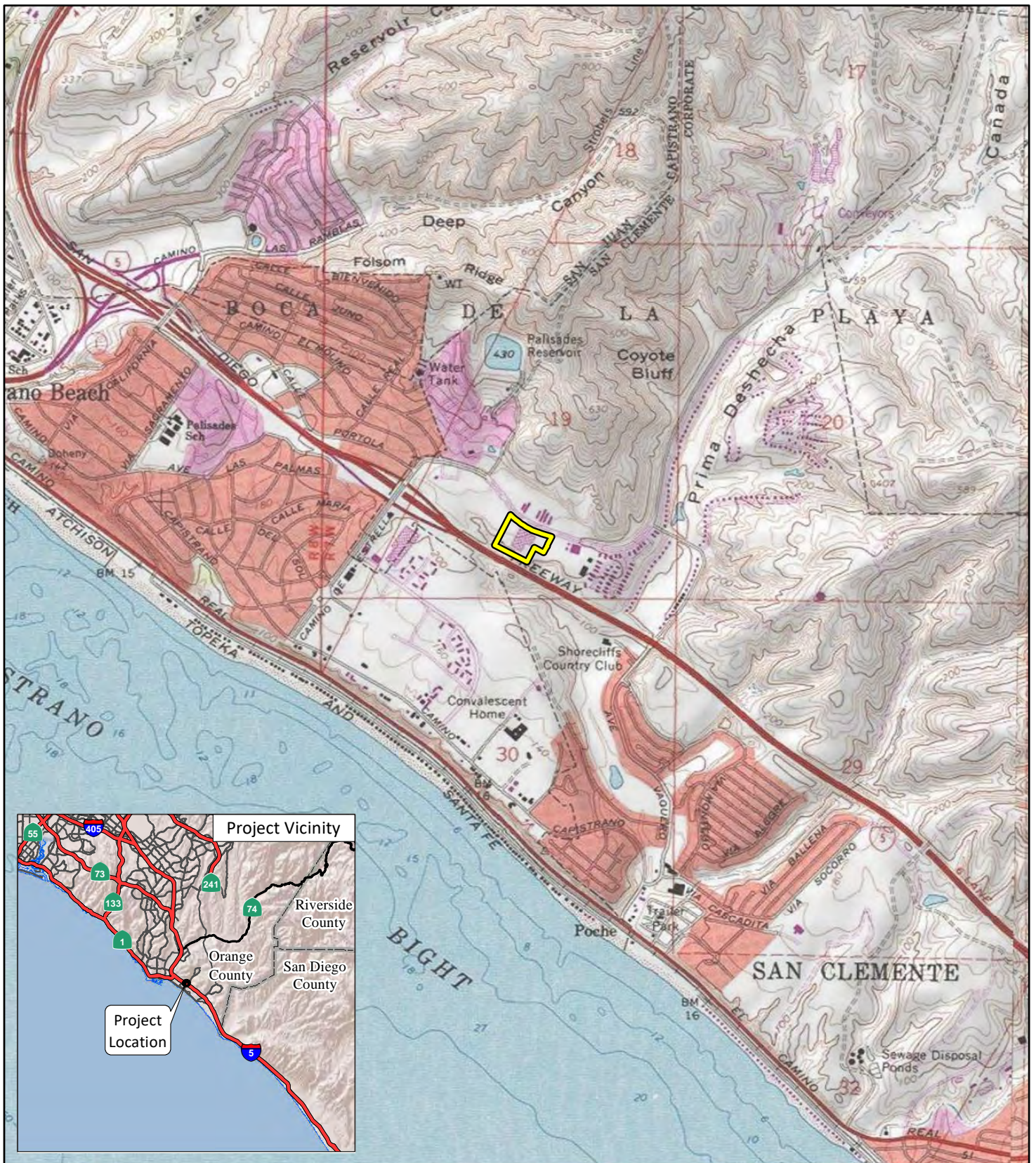
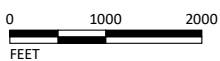


FIGURE 1

LSA

LEGEND

 Project Location



SOURCE: USGS 7.5' Quad - Dana Point, CA (1975)

I:\MEA2203\GIS\MXD\ProjectLocation.mxd (5/10/2022)

San Clemente Memorial Care
Arborist Inventory
Project Location

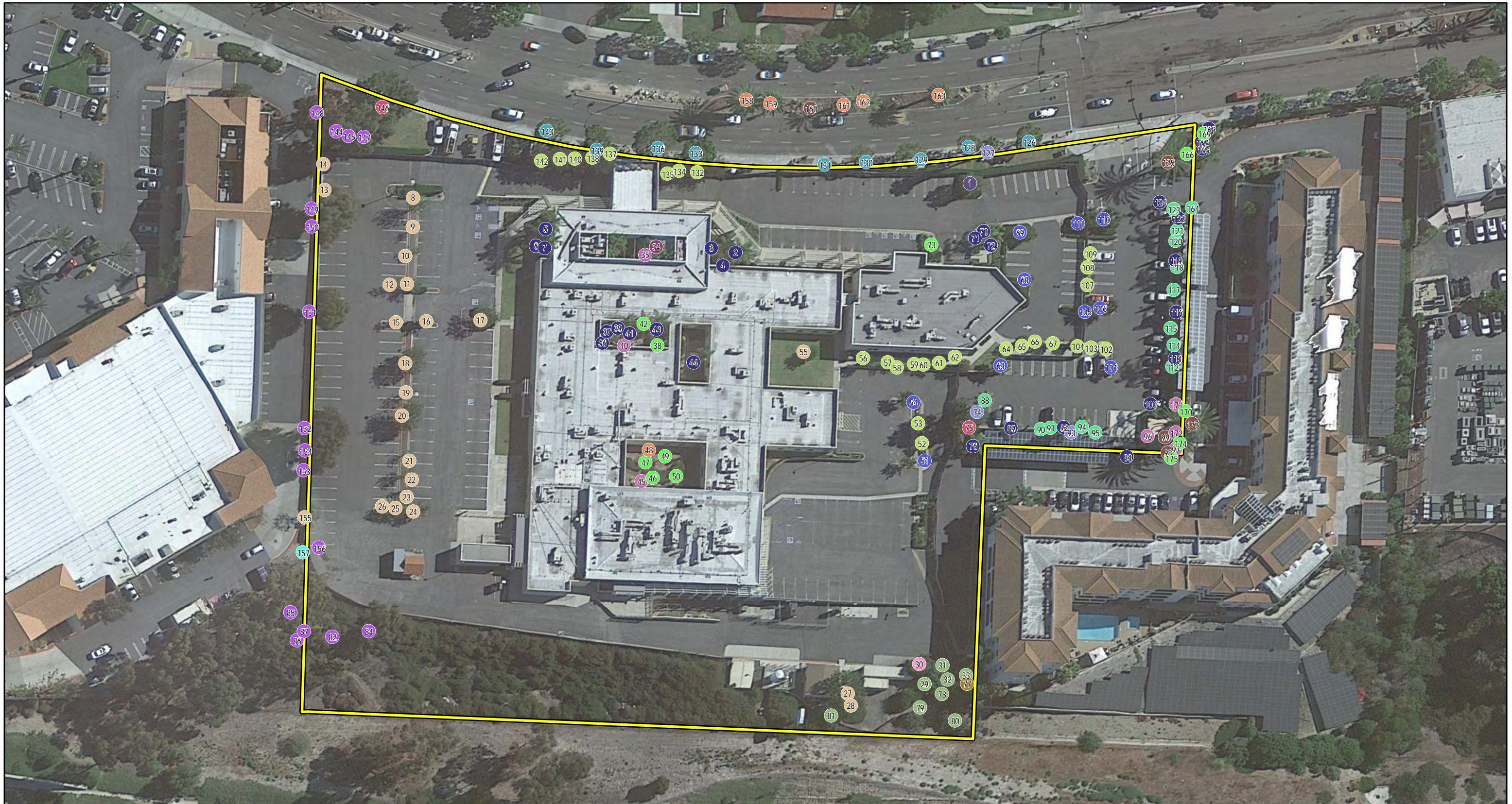


FIGURE 2

LSA

LEGEND

Project Location

Tree Survey Results

Aleppo pine (2)

Brazilian pepper (1)

Canary Island date palm (6)

Carrotwood (23)

Crape myrtle (27)

Crimson bottlebrush (1)

Date palm (5)

Flowering pear (10)

Italian cypress (14)

Loquat (1)

Mexican fan palm (3)

Mousehole tree (8)

New Zealand tree fern (1)

Pigmy date palm (12)

Queen palm (28)

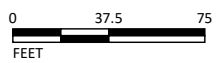
Spotted gum (16)

Sydney golden wattle (1)

Traveler's palm (6)

Weeping fig (1)

Yew pine (9)



SOURCE: Google Imagery (2022)

I:\MEA2203\GIS\MXD\TreeSurvey.mxd (7/21/2022)

San Clemente Memorial Care
Arborist Inventory
Tree Survey Results

APPENDIX A

TREE ATTRIBUTE TABLE

Table A: Tree Attributes

Tree No.	Scientific Name	Common Name	Diameter at Breast Height (inches)	Height (feet)	Condition	
1	<i>Calistemon citrus</i>	Crimson bottlebrush	Multi-trunk 3, 4, 6, 10 = 23	35	Good	
2	<i>Syagrus romanzoffiana</i>	Queen palm	11.5	35	Good	
3	<i>Syagrus romanzoffiana</i>	Queen palm	10	15	Good	
4	<i>Syagrus romanzoffiana</i>	Queen palm	5	12	Fair	
5	<i>Syagrus romanzoffiana</i>	Queen palm	9.5	30	Good	
6	<i>Syagrus romanzoffiana</i>	Queen palm	13	30	Good	
7	<i>Syagrus romanzoffiana</i>	Queen palm	12	30	Good	
8	<i>Cupaniopsis anacardioides</i>	Carrotwood	14	20	Poor	
9	<i>Cupaniopsis anacardioides</i>	Carrotwood	4	8	Poor	
10	<i>Cupaniopsis anacardioides</i>	Carrotwood	4	8	Poor	
11	<i>Cupaniopsis anacardioides</i>	Carrotwood	6	15	Poor	
12	<i>Cupaniopsis anacardioides</i>	Carrotwood	5	15	Poor	
13	<i>Cupaniopsis anacardioides</i>	Carrotwood	Multi-trunk 3, 3, 4 = 10	10	Fair	
14	<i>Cupaniopsis anacardioides</i>	Carrotwood	Multi-trunk 1x20 = 20	7	Poor	Topped
15	<i>Cupaniopsis anacardioides</i>	Carrotwood	Multi-trunk 3, 3, 4 = 10	8	Poor	
16	<i>Cupaniopsis anacardioides</i>	Carrotwood	5	10	Fair	
17	<i>Cupaniopsis anacardioides</i>	Carrotwood	9	15	Fair	
18	<i>Cupaniopsis anacardioides</i>	Carrotwood	9	20	Fair	
19	<i>Cupaniopsis anacardioides</i>	Carrotwood	Multi-trunk 2, 2, 3, 5 = 12	15	Poor	
20	<i>Cupaniopsis anacardioides</i>	Carrotwood	11	20	Fair	
21	<i>Cupaniopsis anacardioides</i>	Carrotwood	Multi-trunk 2, 2, 3, 3 = 10	8	Poor	
22	<i>Cupaniopsis anacardioides</i>	Carrotwood	Multi-trunk 2, 2, 3, 3, 4 = 14	12	Poor	
23	<i>Cupaniopsis anacardioides</i>	Carrotwood	Multi-trunk 1x20 = 20	8	Poor	Topped
24	<i>Cupaniopsis anacardioides</i>	Carrotwood	7	10	Fair	
25	<i>Cupaniopsis anacardioides</i>	Carrotwood	6.5	15	Fair	
26	<i>Cupaniopsis anacardioides</i>	Carrotwood	4	9	Poor	
27	<i>Cupaniopsis anacardioides</i>	Carrotwood	11	20	Fair	
28	<i>Cupaniopsis anacardioides</i>	Carrotwood	9	20	Fair	
29	<i>Myoporum laetum</i>	Mousehole tree	Multi-trunk 3, 4 = 7	15	Fair	Cal-IPC invasive species
30	<i>Schinus terebinthifolius</i>	Brazilian pepper	Multi-trunk 9, 11 = 20	20	Good	
31	<i>Myoporum laetum</i>	Mousehole tree	Multi-trunk 2, 3, 4 = 9	6	Fair	Cal-IPC invasive species
32	<i>Myoporum laetum</i>	Mousehole tree	Multi-trunk 3, 3, 3, 4, 5 = 18	6	Fair	Cal-IPC invasive species
33	<i>Myoporum laetum</i>	Mousehole tree	Multi-trunk 2, 3, 5 = 12	10	Fair	Cal-IPC invasive species
34	<i>Eriobotrya japonica</i>	Loquat	Multi-trunk 1, 1, 2, 3, 3, 4 = 14	20	Good	
35	<i>Dicksonia squarosa</i>	New Zealand tree fern	4	20	Poor	
36	<i>Syagrus romanzoffiana</i>	Queen palm	10	20	Fair	

Table A: Tree Attributes

Tree No.	Scientific Name	Common Name	Diameter at Breast Height (inches)	Height (feet)	Condition	
37	<i>Syagrus romanzoffiana</i>	Queen palm	16	8	Poor	
38	<i>Phoenix robilini</i>	Pigmy date palm	Multi-trunk 5, 5, 7 = 17	6	Good	No photo
39	<i>Syagrus romanzoffiana</i>	Queen palm	14	30	Good	
40	<i>Ravenala Madagascarensis</i>	Traveler's palm	Multi-trunk 4, 5, 5, 6 = 20	12	Good	No photo
41	<i>Syagrus romanzoffiana</i>	Queen palm	12	30	Good	
42	<i>Phoenix robilini</i>	Pigmy date palm	Multi-trunk 6, 8, 9 = 23	8	Good	
43	<i>Syagrus romanzoffiana</i>	Queen palm	15	30	Good	
44	<i>Syagrus romanzoffiana</i>	Queen palm	9	25	Poor	
45	<i>Ravenala Madagascarensis</i>	Traveler's palm	Multi-trunk 6, 7, 10, 10 = 33	20	Fair	
46	<i>Phoenix robilini</i>	Pigmy date palm	11	6	Good	
47	<i>Phoenix robilini</i>	Pigmy date palm	6	4	Poor	
48	<i>Phoenix canariensis</i>	Canary Island date palm	6	5	Good	Cal-IPC invasive species
49	<i>Phoenix robilini</i>	Pigmy date palm	7	6	Fair	
50	<i>Phoenix robilini</i>	Pigmy date palm	Multi-trunk 10, 12 = 22	6	Good	
51	<i>Pyrus calleryan bradford</i>	Flowering pear	6.5	15	Fair	
52	<i>Lagerstroemia indica</i>	Crape myrtle	Multi-trunk 1x12 = 12	8	Fair	
53	<i>Lagerstroemia indica</i>	Crape myrtle	Multi-trunk 1x10, 2x4 = 18	10	Fair	
54	<i>Pyrus calleryana bradford</i>	Flowering pear	6	15	Fair	
55	<i>Cupaniopsis anacardioides</i>	Carrotwood	Multi-trunk 1x5, 3x3, 4 = 18	15	Fair	
56	<i>Lagerstroemia indica</i>	Crape myrtle	Multi-trunk 1, 2x3, 3x3 = 16	15	Fair	
57	<i>Lagerstroemia indica</i>	Crape myrtle	Multi-trunk 1x7, 2x2 = 11	6	Poor	
58	<i>Lagerstroemia indica</i>	Crape myrtle	Multi-trunk 1x10 = 10	6	Fair	
59	<i>Lagerstroemia indica</i>	Crape myrtle	Multi-trunk 1x8 = 8	6	Poor	
60	<i>Lagerstroemia indica</i>	Crape myrtle	Multi-trunk 1x14 = 14	8	Poor	
61	<i>Lagerstroemia indica</i>	Crape myrtle	Multi-trunk 1x8 = 8	8	Fair	
62	<i>Lagerstroemia indica</i>	Crape myrtle	Multi-trunk 1x6, 2x3, 3 = 15	15	Fair	
63	<i>Pyrus calleryana bradford</i>	Flowering pear	8	15	Fair	
64	<i>Lagerstroemia indica</i>	Crape myrtle	Multi-trunk 1x6, 2x4, 3x3, 4x2 = 31	15	Fair	
65	<i>Lagerstroemia indica</i>	Crape myrtle	Multi-trunk 1x10, 2x2 = 14	8	Fair	
66	<i>Lagerstroemia indica</i>	Crape myrtle	Multi-trunk 1x3, 2x2, 3x 2 = 13	10	Fair	
67	<i>Lagerstroemia indica</i>	Crape myrtle	Multi-trunk 2x3, 3x4 = 18	10	Fair	
68	<i>Pyrus calleryan bradford</i>	Flowering pear	5	10	Poor	
69	<i>Pyrus calleryana bradford</i>	Flowering pear	6	10	Fair	
70	<i>Syagrus romanzoffiana</i>	Queen palm	11.5	20	Good	
71	<i>Syagrus romanzoffiana</i>	Queen palm	10.5	20	Fair	

Table A: Tree Attributes

Tree No.	Scientific Name	Common Name	Diameter at Breast Height (inches)	Height (feet)	Condition	
72	<i>Syagrus romanzoffiana</i>	Queen palm	9.5	20	Fair	
73	<i>Phoenix robilini</i>	Pigmy date palm	12	6	Good	
74	<i>Washingtonia robusta</i>	Mexican fan palm	19	35	Fair	Cal-IPC invasive species
75	<i>Pinus halepensis</i>	Aleppo pine	19	30	Good	
76	<i>Syagrus romanzoffiana</i>	Queen palm	11	25	Good	
77	<i>Acacia longifolia</i>	Sydney golden wattle	11.5	30	Good	Cal-IPC invasive species
78	<i>Myoporum laetum</i>	Mousehole tree	Multi-trunk 3, 4 = 7	8	Fair	Cal-IPC invasive species
79	<i>Myoporum laetum</i>	Mousehole tree	Multi-trunk 3, 6, 7, 2 = 18	10	Fair	Cal-IPC invasive species
80	<i>Myoporum laetum</i>	Mousehole tree	Multi-trunk 2, 3, 4 = 9	10	Fair	Cal-IPC invasive species
81	<i>Myoporum laetum</i>	Mousehole tree	Multi-trunk 1, 2, 3 = 6	8	Poor	Cal-IPC invasive species
82	<i>Corymbia maculata</i>	Spotted gum	Multi-trunk 6, 6, 8 = 20	30	Fair	
83	<i>Syagrus romanzoffiana</i>	Queen palm	7	20	Good	
84	<i>Corymbia maculata</i>	Spotted gum	16	40	Fair	
85	<i>Corymbia maculata</i>	Spotted gum	Multi-trunk 16, 17 = 33	40	Fair	
86	<i>Corymbia maculata</i>	Spotted gum	17	4	Poor	Down live tree
87	<i>Corymbia maculata</i>	Spotted gum	Multi-trunk 4, 6 = 10	20	Poor	
88	<i>Cupressus sempervirens</i>	Italian cypress	4	15	Good	
89	<i>Syagrus romanzoffiana</i>	Queen palm	16	25	Good	
90	<i>Cupressus sempervirens</i>	Italian cypress	4	25	Good	
91	<i>Cupressus sempervirens</i>	Italian cypress	4	25	Good	
92	<i>Syagrus romanzoffiana</i>	Queen palm	11	20	Good	
93	<i>Washingtonia robusta</i>	Mexican fan palm	18	35	Fair	Cal-IPC invasive species
94	<i>Cupressus sempervirens</i>	Italian cypress	4	25	Good	
95	<i>Cupressus sempervirens</i>	Italian cypress	4	35	Good	
96	<i>Ravenala Madagascarensis</i>	Traveler's palm	6	10	Good	
97	<i>Ravenala Madagascarensis</i>	Traveler's palm	Multi-trunk 5, 5, 6 = 16	10	Good	
98	<i>Phoenix dactylifolia</i>	Date palm	25	35	Good	
99	<i>Phoenix dactylifolia</i>	Date palm	19	35	Good	
100	<i>Syagrus romanzoffiana</i>	Queen palm	10	15	Good	
101	<i>Pyrus calleryana bradford</i>	Flowering pear	7	18	Fair	
102	<i>Lagerstroemia indica</i>	Crape myrtle	Multi-trunk 1x13 = 13	8	Poor	
103	<i>Lagerstroemia indica</i>	Crape myrtle	Multi-trunk 1x20 = 20	8	Fair	
104	<i>Lagerstroemia indica</i>	Crape myrtle	Multi-trunk 2x3, 1x 15 = 21	10	Fair	
105	<i>Pyrus calleryana bradford</i>	Flowering pear	7	15	Good	
106	<i>Pyrus calleryana bradford</i>	Flowering pear	6	18	Fair	
107	<i>Lagerstroemia indica</i>	Crape myrtle	Multi-trunk 1x9 = 9	8	Fair	

Table A: Tree Attributes

Tree No.	Scientific Name	Common Name	Diameter at Breast Height (inches)	Height (feet)	Condition	
108	<i>Lagerstroemia indica</i>	Crape myrtle	Multi-trunk 2x2, 10x1 = 14	8	Fair	
109	<i>Lagerstroemia indica</i>	Crape myrtle	Multi-trunk 1x10=10	10	Poor	
110	<i>Pyrus calleryana bradford</i>	Flowering pear	6	15	Fair	
111	<i>Pyrus calleryana bradford</i>	Flowering pear	6	15	Fair	
112	<i>Cupressus sempervirens</i>	Italian cypress	4	30	Good	
113	<i>Syagrus romanzoffiana</i>	Queen palm	12	30	Good	No photo
114	<i>Cupressus sempervirens</i>	Italian cypress	4	25	Good	
115	<i>Cupressus sempervirens</i>	Italian cypress	4	25	Good	
116	<i>Syagrus romanzoffiana</i>	Queen palm	10	20	Fair	
117	<i>Cupressus sempervirens</i>	Italian cypress	5	25	Good	
118	<i>Cupressus sempervirens</i>	Italian cypress	6	25	Good	
119	<i>Syagrus romanzoffiana</i>	Queen palm	10	25	Good	
120	<i>Cupressus sempervirens</i>	Italian cypress	4	25	Good	
121	<i>Cupressus sempervirens</i>	Italian cypress	4	25	Good	
122	<i>Syagrus romanzoffiana</i>	Queen palm	9	25	Good	
123	<i>Cupressus sempervirens</i>	Italian cypress	4	25	Good	
124	<i>Syagrus romanzoffiana</i>	Queen palm	9	15	Good	
125	<i>Phoenix dactylifolia</i>	Date palm	17	30	Good	
126	<i>Podocarpus macrophyllus</i>	Yew pine	10	20	Fair	
127	<i>Washingtonia robusta</i>	Yew pine	23	40	Fair	
128	<i>Podocarpus macrophyllus</i>	Yew pine	10	20	Fair	
129	<i>Podocarpus macrophyllus</i>	Yew pine	10	20	Good	
130	<i>Podocarpus macrophyllus</i>	Yew pine	10.5	20	Fair	
131	<i>Podocarpus macrophyllus</i>	Yew pine	3	10	Good	
132	<i>Lagerstroemia indica</i>	Crape myrtle	Multi-trunk 3x5, 4x2 = 23	20	Good	
133	<i>Podocarpus macrophyllus</i>	Yew pine	12	35	Good	
134	<i>Lagerstroemia indica</i>	Crape myrtle	Multi-trunk 2, 3x3, 4 = 15	15	Fair	
135	<i>Lagerstroemia indica</i>	Crape myrtle	Multi-trunk 2, 3x4 = 14	15	Good	
136	<i>Podocarpus macrophyllus</i>	Yew pine	18	40	Fair	
137	<i>Lagerstroemia indica</i>	Crape myrtle	Multi-trunk 3, 4x4, 5 = 24	20	Good	
138	<i>Lagerstroemia indica</i>	Crape myrtle	Multi-trunk 3x3, 4x3 = 21	20	Good	
139	<i>Podocarpus macrophyllus</i>	Yew pine	12.5	30	Good	
140	<i>Lagerstroemia indica</i>	Crape myrtle	Multi-trunk 3, 4x4, 5 = 24	20	Good	
141	<i>Lagerstroemia indica</i>	Crape myrtle	Multi-trunk 2, 3x2, 4x2 = 16	20	Good	
142	<i>Lagerstroemia indica</i>	Crape myrtle	Multi-trunk 3, 4x5, 5x2 = 33	20	Good	
143	<i>Podocarpus macrophyllus</i>	Yew pine	13	45	Fair	

Table A: Tree Attributes

Tree No.	Scientific Name	Common Name	Diameter at Breast Height (inches)	Height (feet)	Condition	
144	<i>Corymbia maculata</i>	Spotted gum	20	40	Fair	
145	<i>Corymbia maculata</i>	Spotted gum	22	40	Fair	
146	<i>Pinus halepensis</i>	Aleppo pine	42	70	Good	Large specimen tree
147	<i>Corymbia maculata</i>	Spotted gum	20	40	Good	
148	<i>Corymbia maculata</i>	Spotted gum	30	65	Poor	Most of the tree necrotic. Recommend removal
149	<i>Corymbia maculata</i>	Spotted gum	22	40	Fair	
150	<i>Corymbia maculata</i>	Spotted gum	9	25	Fair	
151	<i>Corymbia maculata</i>	Spotted gum	31.5	70	Fair	
152	<i>Corymbia maculata</i>	Spotted gum	22	40	Fair	
153	<i>Corymbia maculata</i>	Spotted gum	19.5	70	Fair	
154	<i>Corymbia maculata</i>	Spotted gum	14	30	Poor	Topped
155	<i>Cupaniopsis anacardioides</i>	Carrotwood	7	20	Fair	
156	<i>Corymbia maculata</i>	Spotted gum	3	8	Poor	Sapling
157	<i>Ficus benjamina</i>	Weeping fig	Multi-trunk 2x5, 3x5, 4x2 = 33	15	Poor	Significant canopy die back, bark decay
158	<i>Phoenix canariensis</i>	Canary Island date palm	22.5	25	Good	Cal-IPC invasive species
159	<i>Phoenix canariensis</i>	Canary Island date palm	27	35	Good	Cal-IPC invasive species
160	<i>Phoenix dactylifolia</i>	Date palm	16	20	Good	
161	<i>Phoenix canariensis</i>	Canary Island date palm	20	28	Fair	Cal-IPC invasive species
162	<i>Phoenix canariensis</i>	Canary Island date palm	17.5	20	Fair	Cal-IPC invasive species
163	<i>Phoenix canariensis</i>	Canary Island date palm	24	35	Good	Cal-IPC invasive species
164	<i>Cupressus sempervirens</i>	Italian cypress	4	25	Good	
165	<i>Syagrus romanzoffiana</i>	Queen palm	10	30	Good	
166	<i>Phoenix robilini</i>	Pigmy date palm	Multi-trunk 9, 10 = 19	7	Good	
167	<i>Syagrus romanzoffiana</i>	Queen palm	6	10	Fair	
168	<i>Syagrus romanzoffiana</i>	Queen palm	8	35	Good	
169	<i>Phoenix robilini</i>	Pigmy date palm	7, 7	8	Good	
170	<i>Phoenix robilini</i>	Pigmy date palm	Multi-trunk 4, 5, 6 = 15	6	Good	
171	<i>Ravenala Madagascarensis</i>	Traveler's palm	Multi-trunk 3x 2, 4x5, 5 = 26	15	Good	
172	<i>Ravenala Madagascarensis</i>	Traveler's palm	Multi-trunk 2x2, 3x2, 4x2 = 18	10	Good	
173	<i>Phoenix dactylifolia</i>	Date palm	20	40	Good	
174	<i>Phoenix robilini</i>	Pigmy date palm	6	8	Good	No photo
175	<i>Phoenix robilini</i>	Pigmy date palm	5	5	Good	

APPENDIX B

REPRESENTATIVE TREE PHOTOGRAPHS



Tree 1 – Thirty-foot-tall crimson bottlebrush in good condition.



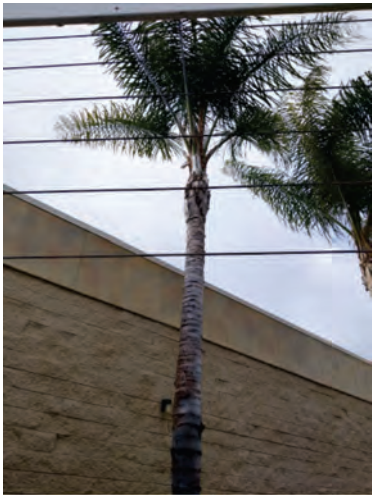
Tree 2 – Thirty-foot-tall queen palm in good condition.



Tree 3 – Fifteen-foot-tall queen palm in good condition.



Tree 4 – Twelve-foot-tall queen palm in fair condition.



Tree 5 – Thirty-foot-tall queen palm in good condition.



Tree 6 – Thirty-foot-tall queen palm in good condition.



Tree 7 – Thirty-foot-tall queen palm in good condition.



Tree 8 – Twenty-foot-tall carrotwood tree in poor condition.



Tree 9 – Eight-foot-tall carrotwood tree in poor condition.



Tree 10 – Eight-foot-tall carrotwood tree in poor condition.



Tree 11 – Fifteen-foot-tall carrotwood tree in poor condition.



Tree 12 – Fifteen-foot-tall carrotwood tree in poor condition.



Tree 13 – Ten-foot-tall carrotwood tree in fair condition.



Tree 14 – Topped carrotwood tree in poor condition.



Tree 15 – Eight-foot-tall carrotwood tree in poor condition.



Tree 16 – Ten-foot-tall carrotwood tree in fair condition.



Tree 17 – Fifteen-foot-tall carrotwood tree in fair condition.



Tree 18 – Twenty-foot-tall carrotwood tree in fair condition.



Tree 19 – Fifteen-foot-tall carrotwood tree in poor condition.



Tree 20 – Twenty-foot-tall carrotwood tree in fair condition.



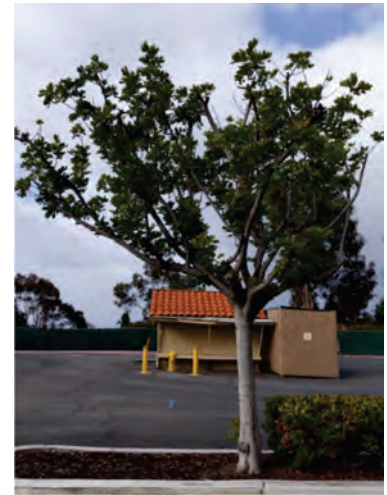
Tree 21 – Eight-foot-tall carrotwood tree in poor condition.



Tree 22 – Twelve-foot-tall carrotwood tree in poor condition.



Tree 23 – Topped carrotwood tree in poor condition.



Tree 24 – Ten-foot-tall carrotwood tree in fair condition.



Tree 25 – Fifteen-foot-tall carrotwood tree in fair condition.



Tree 26 – Nine-foot-tall carrotwood tree in poor condition.



Tree 27 – Twenty-foot-tall carrotwood tree in fair condition.



Tree 28 – Twenty-foot-tall carrotwood tree in fair condition.



Tree 29 – Fifteen-foot-tall Mousehole tree in fair condition. Cal-IPC invasive species list.



Tree 30 – Twenty-foot-tall Brazilian pepper tree in good condition.



Tree 31 – Six-foot-tall Mousehole tree in fair condition. Cal-IPC invasive species list.



Tree 32 – Six-foot-tall Mousehole tree in fair condition. Cal-IPC invasive species list.



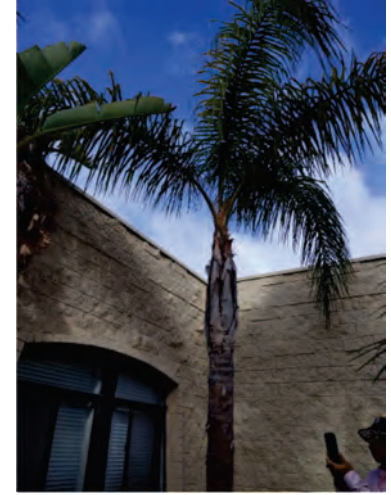
Tree 33 – Ten-foot-tall Mousehole tree in fair condition. Cal-IPC invasive species list.



Tree 34 – Twenty-foot-tall loquat tree in good condition.



Tree 35 – Twenty-foot-tall New Zealand tree fern in poor condition.



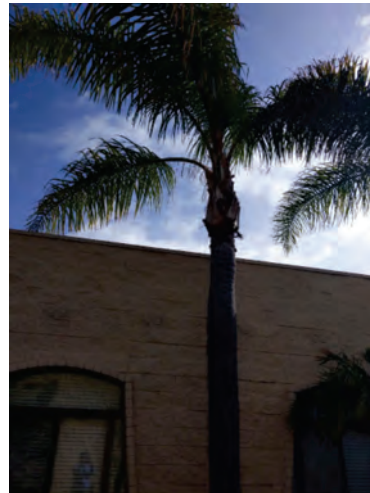
Tree 36 – Twenty-foot-tall queen palm in fair condition.



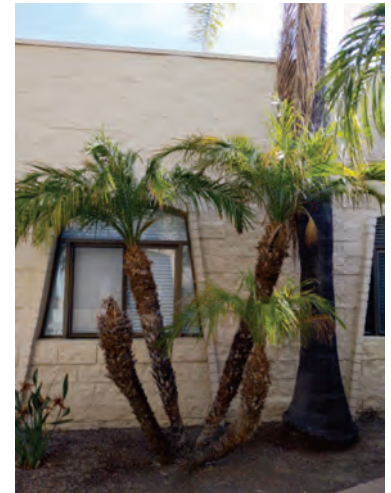
Tree 37 – Eight-foot-tall queen palm in poor condition.



Tree 39 – Thirty-foot-tall queen palm in good condition.



Tree 41 – Thirty-foot-tall queen palm in good condition.



Tree 42 – Eight-foot-tall pigmy date palm in good condition.



Tree 43 – Thirty-foot-tall queen palm in good condition.



Tree 44 – Thirty-foot-tall queen palm in poor condition.



Tree 45 – Twenty-foot-tall traveler's palm in fair condition.



Tree 46 – Six-foot-tall pigmy date palm in good condition.



Tree 47 – Four-foot-tall pigmy date palm in poor condition.



Tree 48 – Five-foot-tall Canary Island date palm in good condition. Cal-IPC invasive species list.



Tree 49 – Six-foot-tall pigmy date palm in fair condition.



Tree 50 – Six-foot-tall pigmy date palm in good condition.



Tree 51 – Fifteen-foot-tall flowering pear tree in fair condition.



Tree 52 – Eight-foot-tall crape myrtle tree in fair condition.



Tree 53 – Ten-foot-tall crape myrtle tree in fair condition.



Tree 54 – Fifteen-foot-tall flowering pear tree in fair condition.



Tree 55 – Fifteen-foot-tall carrotwood tree in fair condition.



Tree 56 – Fifteen-foot-tall crape myrtle tree in fair condition.



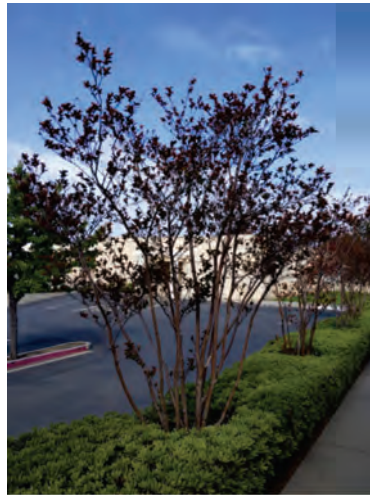
Tree 57 – Six-foot-tall crape myrtle tree in poor condition.



Tree 58 – Six-foot-tall crape myrtle tree in fair condition.



Tree 59 – Six-foot-tall crape myrtle tree in poor condition.



Tree 60 – Eight-foot-tall crape myrtle tree in poor condition.



Tree 61 – Eight-foot-tall crape myrtle tree in fair condition.



Tree 62 – Fifteen-foot-tall crape myrtle tree in fair condition.



Tree 63 – Fifteen-foot-tall flowering pear tree in fair condition.



Tree 64 – Fifteen-foot-tall crape myrtle tree in fair condition.



Tree 65 – Eight-foot-tall crape myrtle tree in fair condition.



Tree 66 – Ten-foot-tall crape myrtle tree in fair condition.



Tree 67 – Ten-foot-tall crape myrtle tree in fair condition.



Tree 68 – Ten-foot-tall flowering pear tree in poor condition.



Tree 69 – Ten-foot-tall flowering pear tree in fair condition.



Tree 70 – Twenty-foot-tall queen palm in good condition.



Tree 71 – Twenty-foot-tall queen palm in fair condition.



Tree 72 – Twenty-foot-tall queen palm in fair condition.



Tree 73 – Six-foot-tall pigmy date palm in good condition.



Tree 74 – Thirty-five-foot-tall Mexican fan palm in fair condition. Cal-IPC invasive species list.



Tree 75 – Thirty-foot-tall Aleppo pine in good condition.



Tree 76 – Twenty-foot-tall queen palm in good condition.



Tree 77 – Thirty-foot-tall Sydney golden wattle in good condition. Cal-IPC invasive species list.



Tree 78 – Eight-foot-tall Mousehole tree in fair condition. Cal-IPC invasive species list.



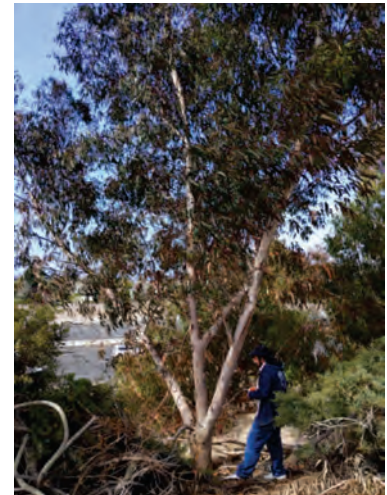
Tree 79 – Ten-foot-tall Mousehole tree in fair condition. Cal-IPC invasive species list.



Tree 80 – Ten-foot-tall Mousehole tree in fair condition. Cal-IPC invasive species list.



Tree 81 – Eight-foot-tall Mousehole tree in poor condition. Cal-IPC invasive species list.



Tree 82 – Thirty-foot-tall spotted gum tree in fair condition.



Tree 83 – Twenty-foot-tall queen palm in good condition.



Tree 84 – Forty-foot-tall spotted gum tree in fair condition.



Tree 85 – Forty-foot-tall spotted gum tree in fair condition.



Tree 86 – Four-foot-tall spotted gum tree in poor condition, down live.



Tree 87 – Twenty-foot-tall spotted gum tree in poor condition.



Tree 88 – Fifteen-foot-tall Italian cypress in good condition.



Tree 89 – Twenty-five-foot-tall queen palm in good condition.



Tree 90 – Twenty-five-foot-tall Italian cypress in good condition.



Tree 91 – Twenty-five-foot-tall Italian cypress in good condition.



Tree 92 – Twenty-foot-tall queen palm in good condition.



Tree 93 – Thirty-five-foot-tall Mexican fan palm in fair condition. Cal-IPC invasive species list.potted gum tree in fair condition.



Tree 94 – Twenty-five-foot-tall Italian cypress in good condition.



Tree 95 – Thirty-five-foot-tall Italian cypress in good condition.



Tree 96 – Ten-foot-tall traveler's palm in good condition.



Tree 97 – Ten-foot-tall traveler's palm in good condition.



Tree 98 – Thirty-five-foot-tall date palm in good condition.



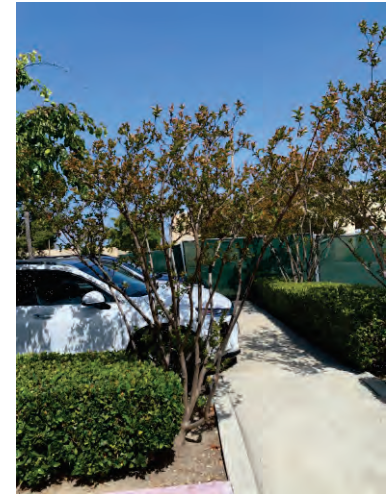
Tree 99 – Thirty-five-foot-tall date palm in good condition.



Tree 100 – Fifteen-foot-tall queen palm in good condition.



Tree 101 – Eighteen-foot-tall flowering pear tree in fair condition.



Tree 102 – Eight-foot-tall crape myrtle tree in poor condition.



Tree 103 – Eight-foot-tall crape myrtle tree in fair condition.



Tree 104 – Ten-foot-tall crape myrtle tree in fair condition.



Tree 105 – Fifteen-foot-tall flowering pear tree in good condition.



Tree 106 – Eighteen-foot-tall flowering pear tree in fair condition.



Tree 107 – Eight-foot-tall crape myrtle tree in fair condition.



Tree 108 – Eight-foot-tall crape myrtle tree in fair condition.



Tree 109 – Ten-foot-tall crape myrtle tree in poor condition.



Tree 110 – Fifteen-foot-tall flowering pear tree in fair condition.



Tree 111 – Fifteen-foot-tall flowering pear tree in fair condition.



Tree 112 – Thirty-foot-tall Italian cypress in good condition.



Tree 114 – Twenty-five-foot-tall Italian cypress in good condition.



Tree 115 – Twenty-five-foot-tall Italian cypress in good condition.



Tree 116 – Twenty-five-foot-tall queen palm in fair condition.



Tree 117 – Twenty-five-foot-tall Italian cypress in good condition.



Tree 118 – Twenty-five-foot-tall Italian cypress in good condition.



Tree 119 – Twenty-five-foot-tall queen palm in fair condition.



Tree 120 – Twenty-five-foot-tall Italian cypress in good condition.



Tree 121 – Twenty-five-foot-tall Italian cypress in good condition.



Tree 122 – Twenty-five-foot-tall queen palm in fair condition.



Tree 123 – Twenty-five-foot-tall Italian cypress in good condition.



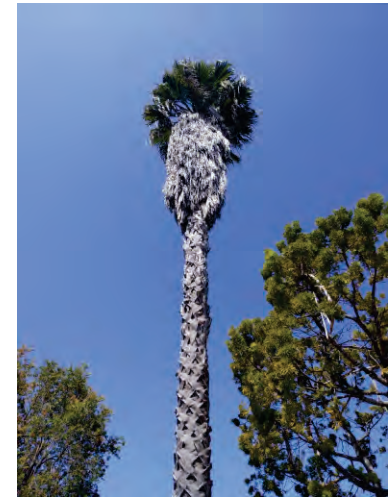
Tree 124 – Fifteen-foot-tall queen palm in fair condition.



Tree 125 – Thirty-foot-tall date palm in good condition.



Tree 126 – Twenty-five-foot-tall yew pine in good condition.



Tree 127 – Forty-foot-tall Mexican fan palm in fair condition. Cal-IPC invasive species list.



Tree 128 – Twenty-five-foot-tall yew pine in fair condition.



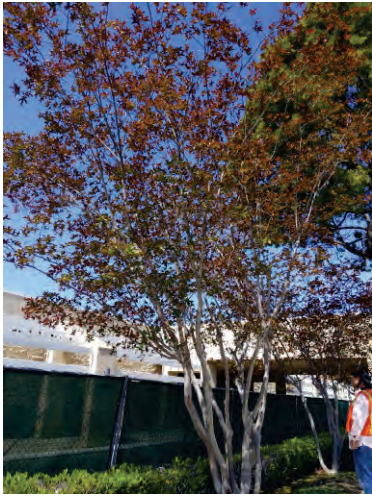
Tree 129 – Twenty-five-foot-tall yew pine in good condition.



Tree 130 – Twenty-five-foot-tall yew pine in fair condition.



Tree 131 – Ten-foot-tall yew pine in good condition.



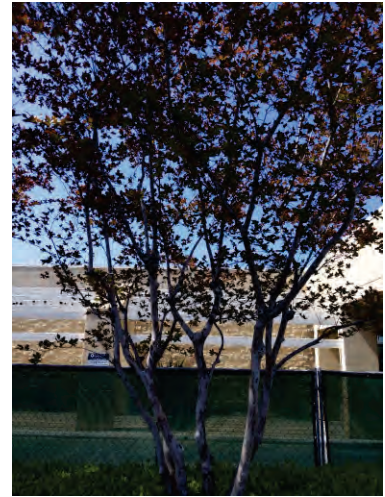
Tree 132 – Twenty-foot-tall crape myrtle tree in good condition.



Tree 133 – Thirty-five-foot-tall yew pine in good condition.



Tree 134 – Fifteen-foot-tall crape myrtle tree in fair condition.



Tree 135 – Fifteen-foot-tall crape myrtle tree in good condition.



Tree 136 – Forty-foot-tall yew pine in fair condition.



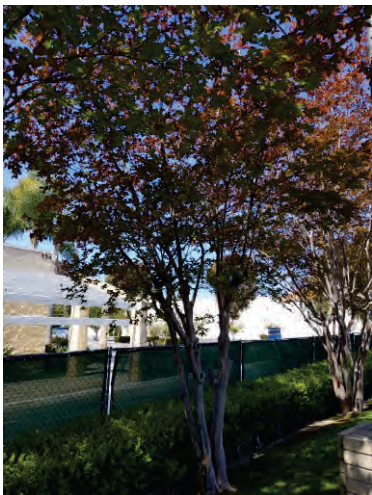
Tree 137 – Twenty-foot-tall crape myrtle tree in good condition.



Tree 138 – Twenty-foot-tall crape myrtle tree in good condition.



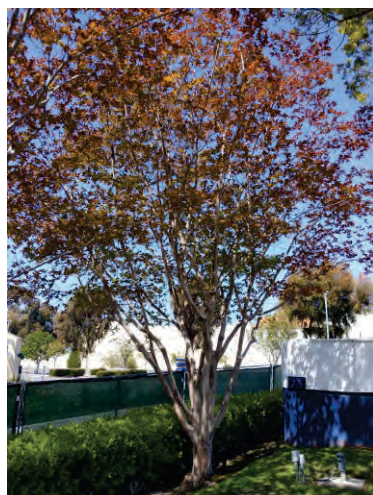
Tree 139 – Thirty-foot-tall yew pine in good condition.



Tree 140 – Twenty-foot-tall crape myrtle tree in good condition.



Tree 141 – Twenty-foot-tall crape myrtle tree in good condition.



Tree 142 – Twenty-foot-tall crape myrtle tree in good condition.



Tree 143 – Forty-five-foot-tall yew pine in fair condition.



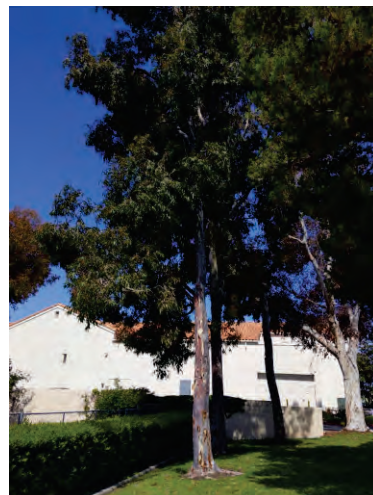
Tree 144 – Forty-foot-tall spotted gum tree in fair condition.



Tree 145 – Forty-foot-tall spotted gum tree in fair condition.



Tree 146 – Seventy-foot-tall Aleppo pine in good condition. Large specimen tree.



Tree 147 – Forty-foot-tall spotted gum tree in good condition.



Tree 148 – Sixty-five-foot-tall spotted gum tree in very poor condition with most of the tree necrotic. Recommend removal.



Tree 149 – Forty-foot-tall spotted gum tree in fair condition.



Tree 150 – Twenty-five-foot-tall spotted gum tree in fair condition.



Tree 151 – Seventy-foot-tall spotted gum tree in fair condition.



Tree 152 – Forty-foot-tall spotted gum tree in fair condition.



Tree 153 – Seventy-foot-tall spotted gum tree in fair condition.



Tree 154 – Thirty-foot-tall spotted gum tree in poor condition, topped.



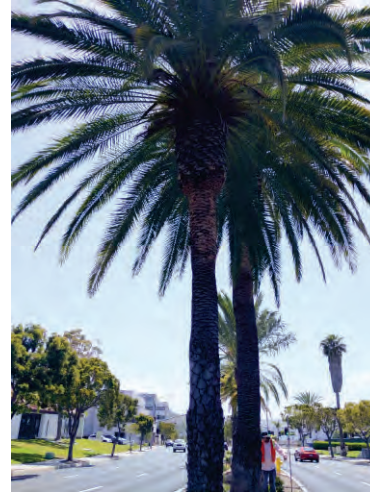
Tree 155 – Twenty-foot-tall carrotwood tree in fair condition.



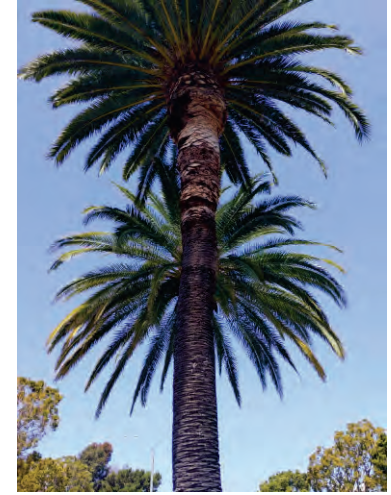
Tree 156 – Eight-foot-tall spotted gum tree in poor condition, sapling.



Tree 157 – Fifteen-foot-tall weeping fig tree in poor condition, significant canopy die back, bark decay.



Tree 158 – Twenty-five-foot-tall Canary Island date palm in good condition. Cal-IPC invasive species list.



Tree 159 – Thirty-five-foot-tall Canary Island date palm in good condition. Cal-IPC invasive species list.



Tree 160 – Twenty-foot-tall date palm in good condition.



Tree 161 – Twenty-eight-foot-tall Canary Island date palm in fair condition. Cal-IPC invasive species list.



Tree 162 – Twenty-foot-tall Canary Island date palm in fair condition. Cal-IPC invasive species list.



Tree 163 – Thirty-five-foot-tall Canary Island date palm in good condition. Cal-IPC invasive species list.



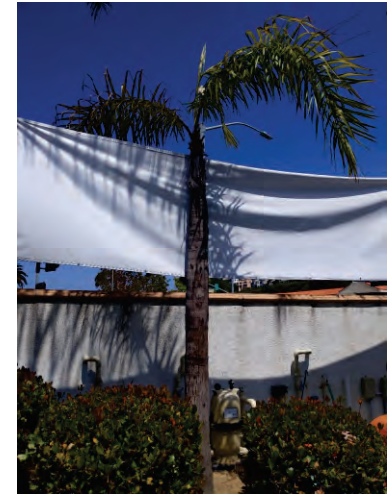
Tree 164 – Twenty-five-foot-tall Italian cypress in good condition.



Tree 165 – Thirty-foot-tall queen palm in good condition.



Tree 166 – Seven-foot-tall pigmy date palm in good condition.



Tree 167 – Ten-foot-tall queen palm in fair condition.



Tree 168 – Thirty-five-foot-tall queen palm in good condition.



Tree 169 – Eight-foot-tall pigmy date palm in good condition.



Tree 170 – Six-foot-tall pigmy date palm in good condition.



Tree 171 – Fifteen-foot-tall traveler's palm in good condition.



Tree 172 – Ten-foot-tall traveler's palm in good condition.



Tree 173 – Forty-foot-tall date palm in good condition.



Tree 175 – Forty-foot-tall date palm in good condition.