



## Design Review Subcommittee (DRSC)

Meeting Date: April 27, 2022

**PLANNER:** Jonathan Lightfoot, Economic Development Officer

**SUBJECT:** **2022-2023 Parklet Dining Exception Requests**, a review of applications for outdoor dining parklets that do not meet the standard site plan or design guidelines as established by City Council Ordinance 1727<sup>1</sup>.

### **BACKGROUND:**

The City Council adopted Ordinance 1727 on March 16, 2022 after the Planning Commission voted unanimously to recommend that the City Council adopt this Zoning Amendment at their regular meeting on March 2, 2022. This Amendment established a temporary parklet dining program to allow for outdoor dining based on recent state legislation (AB 61 and SB314, signed into law in October of 2021) which enabled cities to permit outdoor dining without the need for the proclamation and powers of a local emergency. After the Council's second reading of the ordinance on April 5, 2022, staff created a "Parklet Dining Permits" webpage<sup>2</sup> to provide all forms and resources in one location.

### **PROJECT DESCRIPTION**

Parklet Permits are reviewed administratively by staff. However, the Ordinance does require that the DRSC review proposals that include "exceptions" to the standard site plan or designs:

***Exceptions:*** *Exceptions to the standards listed herein shall require a review by the Design Review Subcommittee, which shall provide a recommendation to the Community Development Director or Deputy Director. The Community Development Director shall make a final determination, appealable to the Planning Commission per the City's standard Appeals process (See 17.12.140 - Appeals of an Action).*

### **CONCLUSION**

Staff seeks DRSC discussion of any non-standard plans submitted by businesses in the month of April. The DRSC's recommendations will inform the Community Development Director's (or Deputy's) determination on the permit request. Materials will be provided and self-presented by the business at the meeting. For reference, the standard site plan options for parklets on City property are provided as Attachment 1.

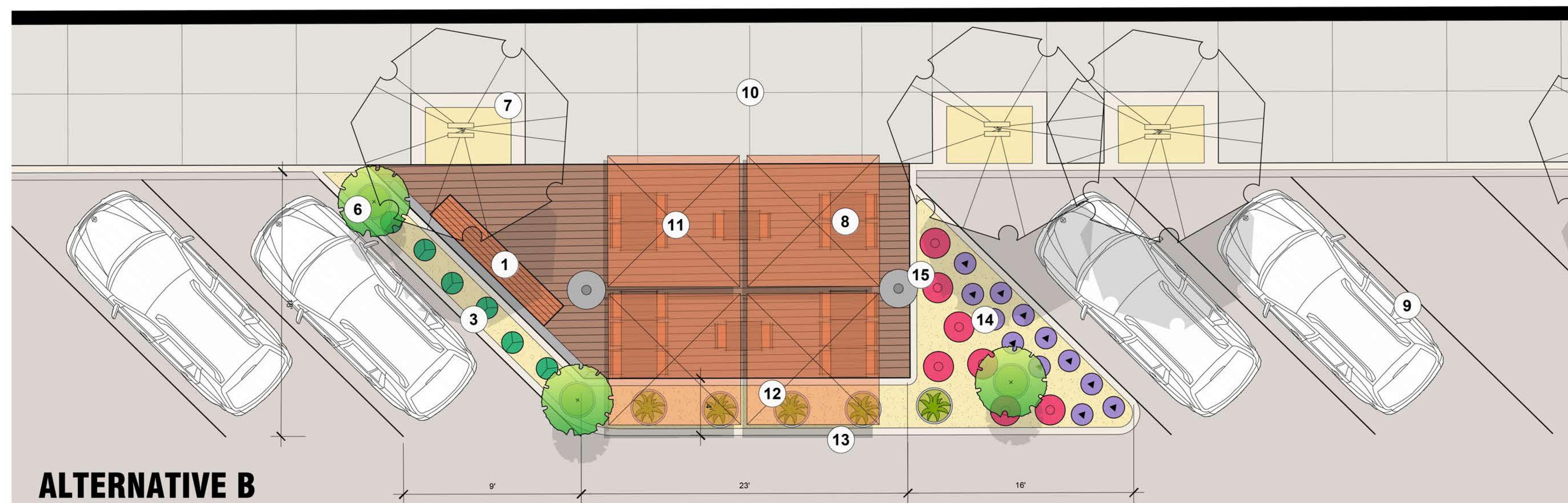
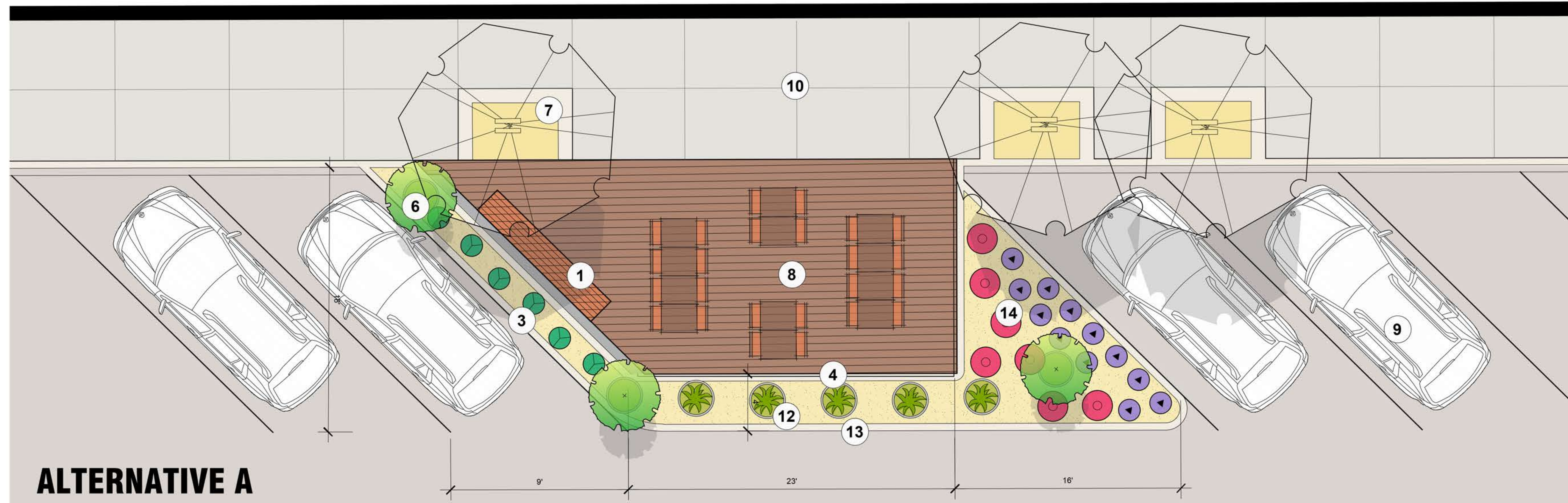
---

<sup>1</sup> <https://www.san-clemente.org/home/showpublisheddocument/68564>

<sup>2</sup> <https://www.san-clemente.org/departments-services/planning-services/parklet-dining-permits>

LEGEND

1. STREET SEATING WALL TO MATCH EXISTING WITH CANTILEVERED BENCH SEATING
2. METAL TRELLIS WITH OPTIONAL HEATERS
3. 2' SHRUB LANDSCAPE
4. PAINTED WOOD SAFETY GUARD RAIL
5. PAINTED TUBE STEEL SAFETY GUARD RAIL
6. ACCENT PATIO STANDARD SHRUB IN GFRC POT
7. EXISTING TREES (LOCATION VARIES)
8. TWO TOP TABLE AND CHAIRS
9. EXISTING PARKING
10. EXISTING WALK
11. SHADE UMBRELLAS
12. TRAFFIC RATED ACCENT FLOWERING SHRUBS IN GFRC POTS 30" X 5' O/C
13. OPTIONAL 6" CURB
14. 4' SHRUB LANDSCAPE
15. FREE STANDING OPTIONAL HEATERS



**DINING PARKLETS | Angle Parking Condition**

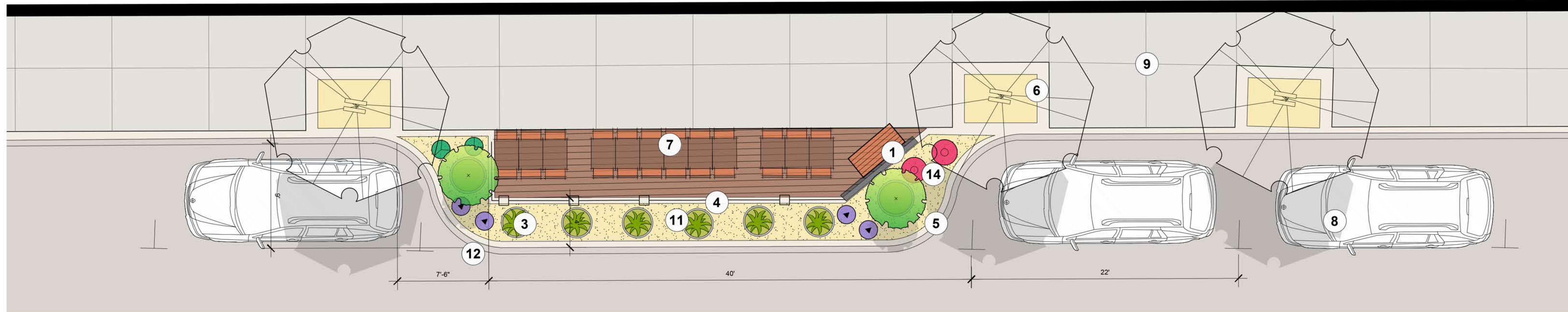


SCALE: 1/4" = 1' - 0"

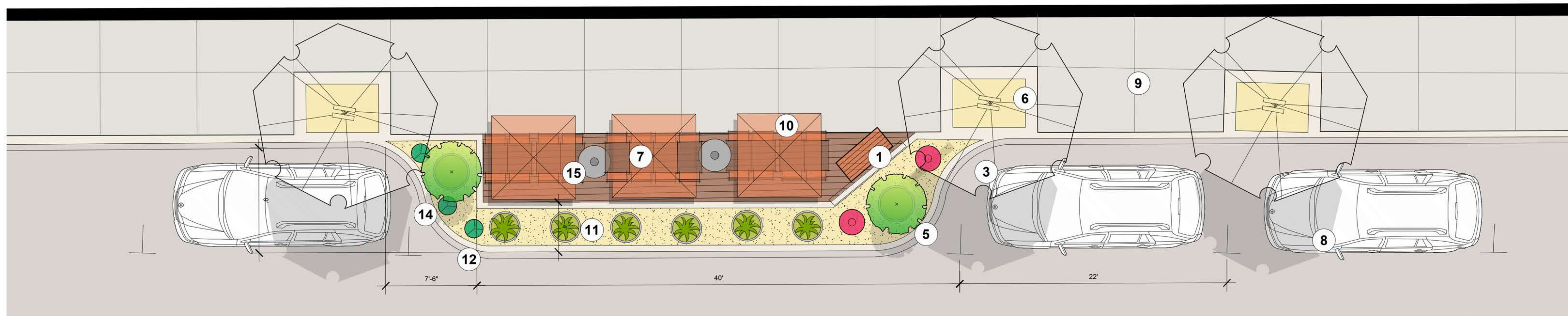


# LEGEND

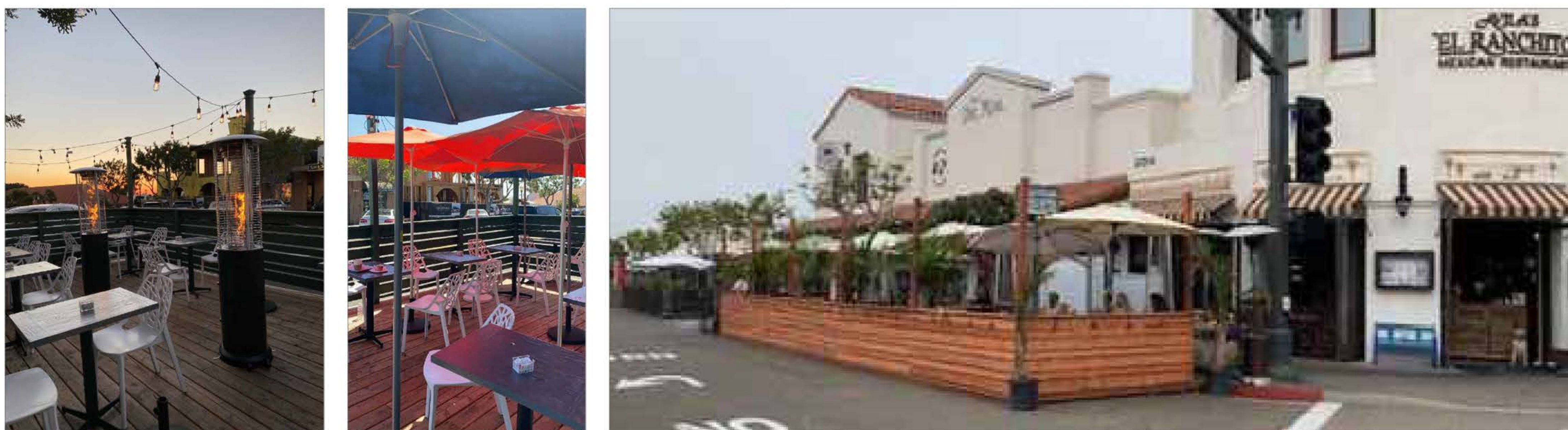
1. STREET SEATING WALL TO MATCH EXISTING WITH CANTILEVERED SEATING
2. METAL TRELLIS WITH OPTIONAL HEATERS
3. 2' SHRUB LANDSCAPE
4. PAINTED WOOD GUARD RAIL
5. ACCENT PATIO STANDARD SHRUB IN GFRC POT
6. EXISTING TREES (LOCATION VARIES)
7. TWO TOP TABLE AND CHAIRS
8. EXISTING PARKING
9. EXISTING WALK
10. SHADE UMBRELLAS
11. ACCENT FLOWERING SHRUBS IN GFRC POTS 30" X 5' O/C
12. OPTIONAL 6" CURB
13. PAINTED TUBE STEEL GUARD RAIL
14. 4' SHRUB LANDSCAPE
15. FREE STANDING OPTIONAL HEATERS



**ALTERNATIVE A**



**ALTERNATIVE B**



## DINING PARKLETS | Parallel Parking Condition

City Council | San Clemente, CA | April 01, 2022



SCALE: 1/4" = 1' - 0"



**ACCENT PATIO STD. IN GFRC POT**



**FEIJOA SELLOWIANA  
PINEAPPLE GUAVA**



**PRUNUS CAROLINIANA  
CAROLINA CHERRY-LAUREL**



**UMBELLULARIA CALIFORNICA  
CALIFORNIA LAUREL**

**FLOWERING SHRUBS IN POTS**



**PELARGONIUM PELTATUM  
IVY GERANIUM**



**CAREX DIVULSA  
GRASSLAND SEDGE**



**JUNCUS EFFUSUS  
COMMON RUSH**

**DINING PARKLETS | Patio Tree and Shrub Potted Imagery**