



AGENDA REPORT

SAN CLEMENTE CITY COUNCIL MEETING
Meeting Date: June 1, 2021

Agenda Item 9F
Approvals:
City Manager ES
Dept. Head CGD
Attorney _____
Finance PLW

Department: Community Development and Orange County Sheriff's Departments
Prepared By: Cecilia Gallardo-Daly, Community Development Director

Subject: *PARKING ENFORCEMENT METHODS AROUND MAX BERG PARK.*

Fiscal Impact: Yes. Approximately \$1200 is needed for signage. The cost to enforce additional restricted parking areas would be covered by fines issued for vehicles parked illegally.

Summary: This is a recommendation for City Council consideration to address RV parking concerns around Max Berg Park. The recommendations take into account current practices and staffing resources.

Background: The City Council requested staff consider options to address RV parking around Max Berg Park due to complaints by residents of RVs exceeding the allowed time limit for parking on City streets surrounding the park. RV parking is limited to 5 hours at a time, however, this requires specific OCS D enforcement resources to ticket the vehicles. City Council requested staff evaluate additional parking and enforcement methods.

Discussion: Staff from the Orange County Sherriff's, Public Works and Community Development Departments met to discuss options to address issues and solutions surrounding RV parking and enforcement at Max Berg Park. Options such as "no parking" along the curbs immediately adjacent to the park during times the park is closed (10 PM to 6 AM), and a neighborhood parking permit program where overnight parking is by permit only were discussed. Due to limited OCS D enforcement resources, these ideas are not recommended.

Based on staffing resources, staff recommends the Council consider designating the curbs immediately adjacent to the park as parking for Max Berg Park. This would allow the Park Rangers (within the Community Development Code Compliance Division) to enforce parking in these areas, but would also prohibit parking when the park is closed (10 PM to 6 AM). If the curbs are designated as parking for the park, Park Rangers and, when enforcement resources are available, OCS D deputies would be able to provide parking enforcement to address RVs and other vehicles parking overnight at Max Berg Park.

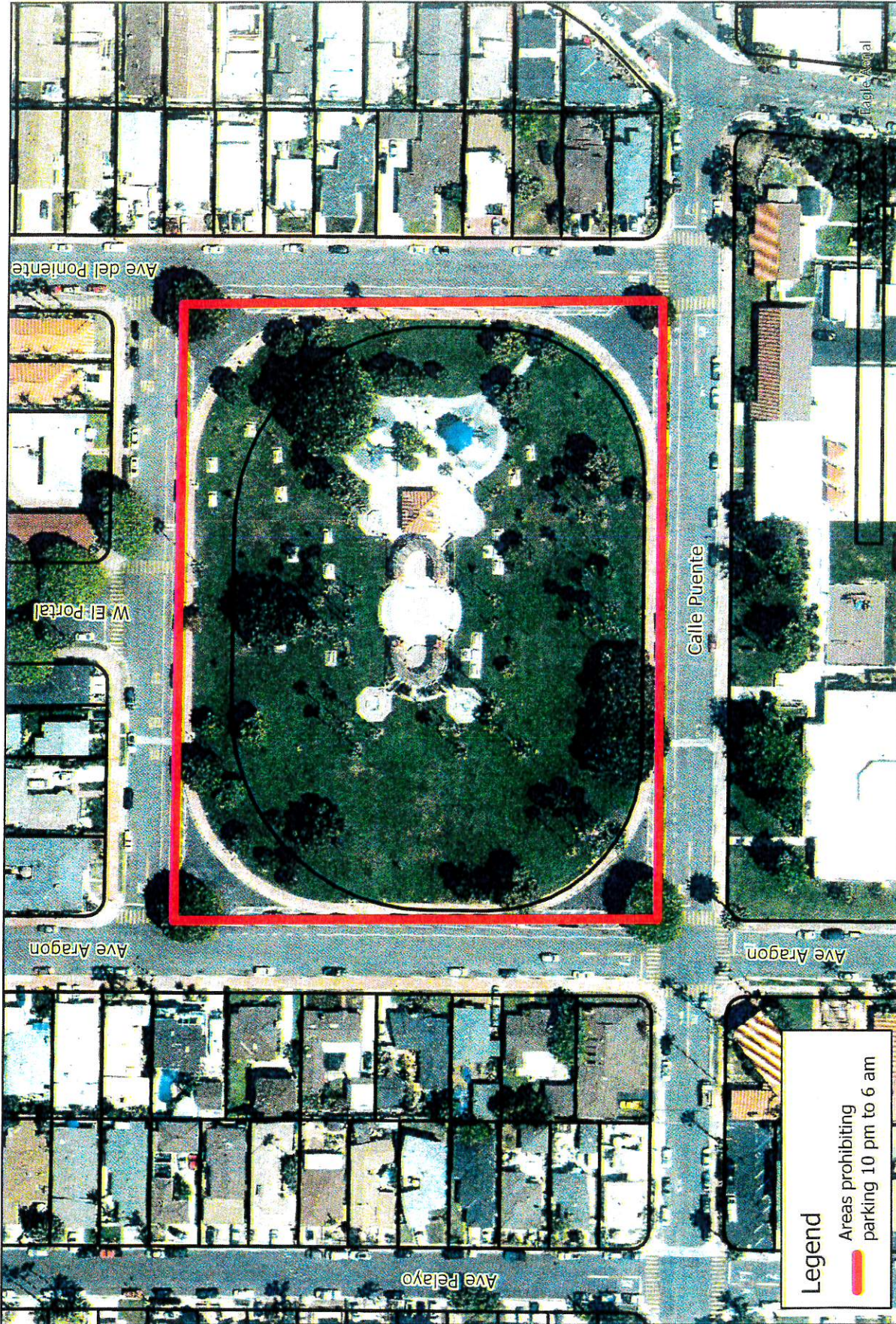
Prior to installation of signage indicating the street parking along the curbs immediately adjacent to the park is established as parking for the park, staff recommends providing a courtesy notice to property owners and residents informing them of the change.


Recommended

Action: STAFF RECOMMENDS THAT the City Council designate the curbs immediately adjacent to the park as parking for Max Berg Park. Direct staff to install the appropriate signage. Direct staff to mail notices to property owners and residents surrounding Max Berg Park informing them of the proposed change, prior to implementation.

Attachments: Map of proposed designated parking areas for Max Berg Park.

Notification: None



Legend
 Areas prohibiting parking 10 pm to 6 am



Proposed Max Berg Park Parking
 Park-designated parking areas with no overnight parking



Scale: 1:1,250

