

in this issue >>>

- *COVID-19 Vaccine Distribution*
- *2020 in Review*
- *Fire Extinguisher Info*
- *Incident Responses*
- *2020 Incidents Overview*
- *Firefighters in Action*



ORANGE COUNTY FIRE AUTHORITY
DIVISION 3, BATTALION 6
DIVISION CHIEF ROB CAPOBIANCO

A Quarterly Update of What's Going on in Division 3

San Clemente 2020 4th Quarter

Keep in Touch

Division Chief Rob Capobianco
Office: (949) 347-2273
Email: RobCapobianco@ocfa.org

Battalion Chief Jason Fairchild (A Shift)
Office: (949) 487-0102
Email: JasonFairchild@ocfa.org

Battalion Chief Marc Moore (B Shift)
Office: (949) 487-0102
Email: MarcMoore@ocfa.org

Battalion Chief Aaron Clark (C Shift)
Office: (949) 487-0102
Email: AaronClark@ocfa.org

Division Administrative Captain
Bill Lackey
Office: (949) 347-2275
Email: WilliamLackey@ocfa.org

Division Administrative Assistant
Michelle Schneider
Office: (949) 347-2277
Email: MichelleSchneider@ocfa.org

Community Relations/ Education
Specialist
Chris Barry
Office: (949) 347-2256
ChristopherBarry@ocfa.org

Where it All Started

In coordination with the Orange County Health Care Agency, our firefighters got the first round of the Moderna COVID-19 vaccine on December 26th. This was a large step in protecting our crews who take care of our communities.

OCFA's headquarters was then chosen to pilot the COVID-19 vaccine distribution to eligible phase 1A public as determined by the State.



2020... A Year for the Books



2020 had been full of challenges for OCFA due to large wildfires, COVID-19 and times of civil unrest. Throughout these more trying times its members continue to step up to ensure our high service levels are upheld and we are prepared to meet our communities' needs. The wildfires experienced in Orange County this year proved that OCFA has prepared well for these threats and we continue to evaluate our response to look for ways to improve. The success that we saw was due in part to the robust response of our crews and support staff. Additional OCFA crews were upstaffed prior to the wind events allowing for a large initial response on the ground and in the air. The newer building codes and brush clearance/management played a large role in our ability to limit property loss. Early evacuations and rapid repopulation efforts were well coordinated with local law enforcement agencies.

All in the meantime OCFA saw rising COVID numbers within the community and their ranks as well. Our response to the pandemic continues to evolve as the challenges evolve. Contingency plans have been developed to prepare for the growing stress on our health care system. Our fire department continues to push through the trials of 2020 to ensure that they are prepared to provide high level service to the citizens of Orange County. Our stations remained fully staffed and covered throughout a very difficult year for all our communities' needs.

FIRE EXTINGUISHERS



Fire extinguishers can save lives and property, but should only be used if the fire is small, smoke and heat have not filled the room, and if you have a clear escape route. If you're unsure, evacuate immediately and call 9-1-1.



Since fire grows and spreads rapidly, the number one priority is to get out safely.



**Orange County
Fire Authority**

(714) 573-6200
ocfa.org



Types of Fire Extinguishers

Multipurpose (ABC) fire extinguishers are recommended for home use. Fire classifications are used to indicate the type of fire they will extinguish.

- A – For use with ordinary materials like cloth, wood, and paper.
- B – For use with flammable liquids like grease, gasoline, oil, and oil-based paints.
- C – For use with electrical equipment that is connected to an outlet.

Before Using a Fire Extinguisher

- Alert others that there is a fire and appoint someone to call 9-1-1.
- Make sure the fire is small, not spreading, and that you have a clear escape route.

The P.A.S.S. Method

- Pull the pin.
- Aim low. Stand six to eight feet away and point the extinguisher nozzle at the base of the fire.
- Squeeze the lever slowly and evenly.
- Sweep the nozzle from side to side until the fire is completely out.

Fire Extinguisher Maintenance

- Keep your extinguisher in plain view and out of the reach of children.
- Read and follow all instructions on the label and check for dents, corrosion or damage monthly.
- Non-rechargeable fire extinguishers should generally be replaced every five to seven years.
- Fire extinguishers are good for one use only. To dispose of an extinguisher, release the pressure by squeezing contents into a trash can. Let the extinguisher sit for 48 hours and then throw it in a trash can. You can also drop off used extinguishers at any household hazardous waste facility.

Incident Responses

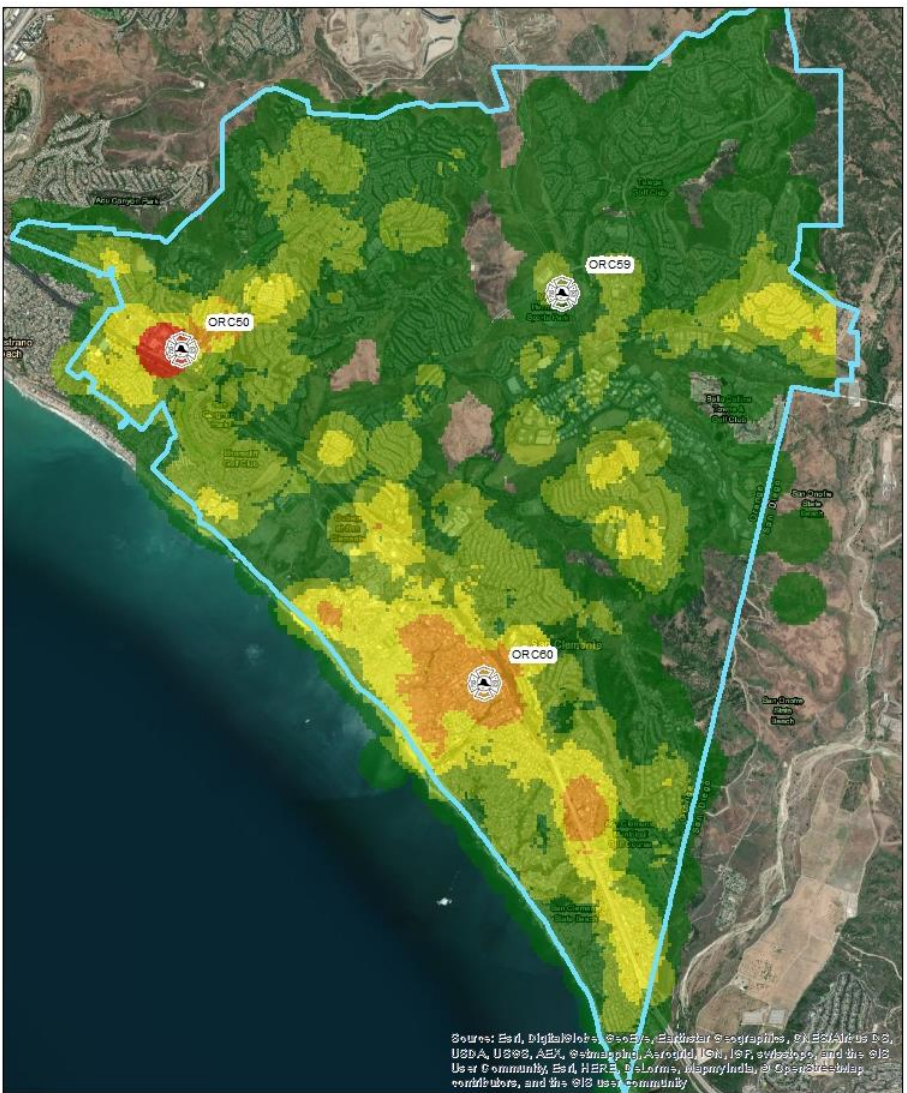
CALL TYPE	JAN	FEB	MAR	APR	MAY	JUN	JUL	AUG	SEP	OCT	NOV	DEC	Total	Monthly Average
Medical Aid - Automatic Paramedic Alarm	22	18	21	14	18	15	20	24	15	13	19	10	209	17
Medical Aid- Back to Bed/ Lift Assist	11	12	3	6	5	5	12	12	13	4	9	7	99	8
Medical Aid- Cardiac (Chest Pain, Cardiac Arrest)	29	32	36	21	18	20	20	26	26	29	17	23	297	25
Medical Aid - Stroke (Unconscious, Altered Mental State)	39	37	25	18	31	29	25	39	39	37	25	37	381	32
Medical Aid- Diabetic Emergency	5	4	5	3	4	5	10	13	6	7	7	9	78	7
Medical Aid- Fall	73	83	54	61	69	69	58	74	70	85	62	60	818	68
Medical Aid - Illness (Sick Person, Injury, Illness)	55	43	29	24	27	33	41	38	43	52	41	34	460	38
Medical Aid- Respiratory (Respiratory Arrest, Difficulty Breathing)	21	19	14	0	2	0	0	0	0	0	0	0	56	5
Medical Aid- Abdominal Pain	17	14	16	14	13	4	17	15	18	20	10	8	166	14
Medical Aid- Seizure	15	20	9	10	10	8	13	11	16	10	12	11	145	12
Medical Aid - Misc. (Choking, Headache, Pregnancy, Bleeding, Assault, Burn, Intoxication)	48	46	94	121	123	104	125	122	119	124	113	147	1286	107
Medical Aid- Traffic Collision (Auto vs Auto, Auto vs Pedestrian)	30	22	22	13	27	16	14	29	18	20	27	25	263	22
Fire - Structure	7	4	4	3	1	3	6	5	6	3	7	8	57	5
Fire - Vehicle/ Dumpster	3	2	3	4	0	6	3	1	6	0	2	1	31	3
Fire- Vegetation, Brush, Tree, Bush, Misc.	10	2	4	3	1	9	9	5	5	2	6	8	64	5
Service Call- Misc. (Odor Check, Stuck Elevator, Automatic Fire Alarm)	52	34	42	33	40	63	60	60	58	50	34	37	563	47
Incidents	437	392	381	348	389	389	433	474	458	456	391	425	4973	414

CALL TYPE	JAN	FEB	MAR	APR	MAY	JUN	JUL	AUG	SEP	OCT	NOV	DEC	TOTAL	MO. AVG.
Medical Aids	365	350	328	305	347	308	355	403	383	401	342	371	4258	355
Fires	20	8	11	10	2	18	18	11	17	5	15	17	152	13
Misc	52	34	42	33	40	63	60	60	58	50	34	37	563	47

2020 Incidents



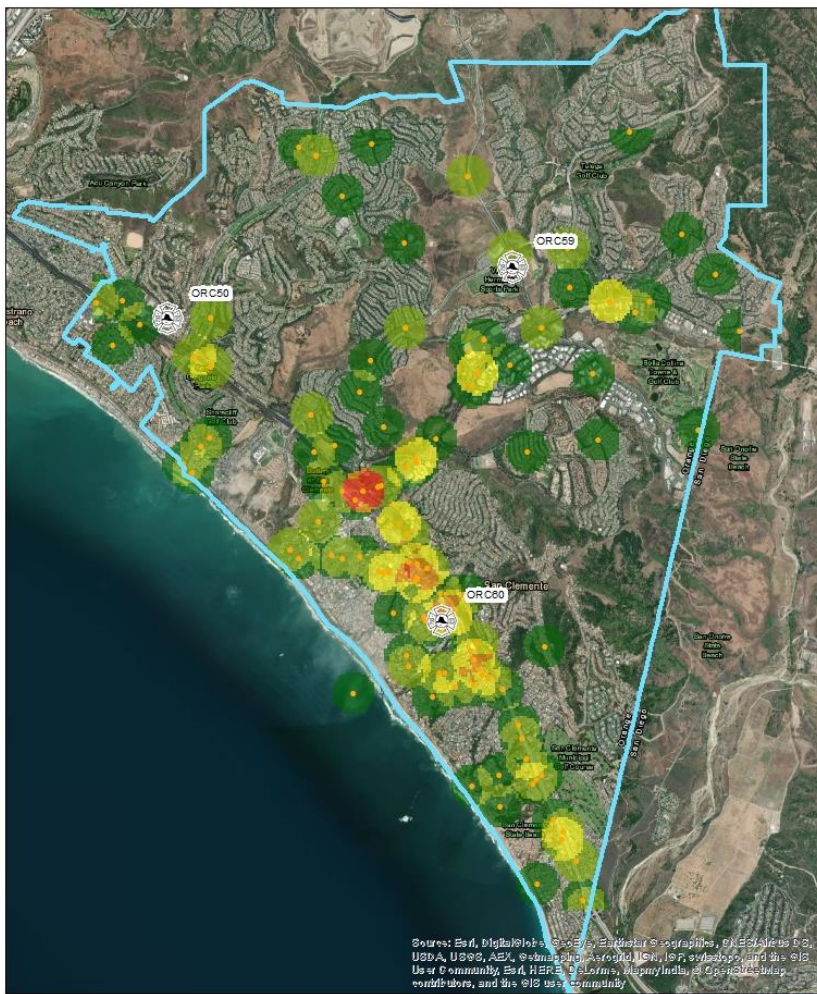
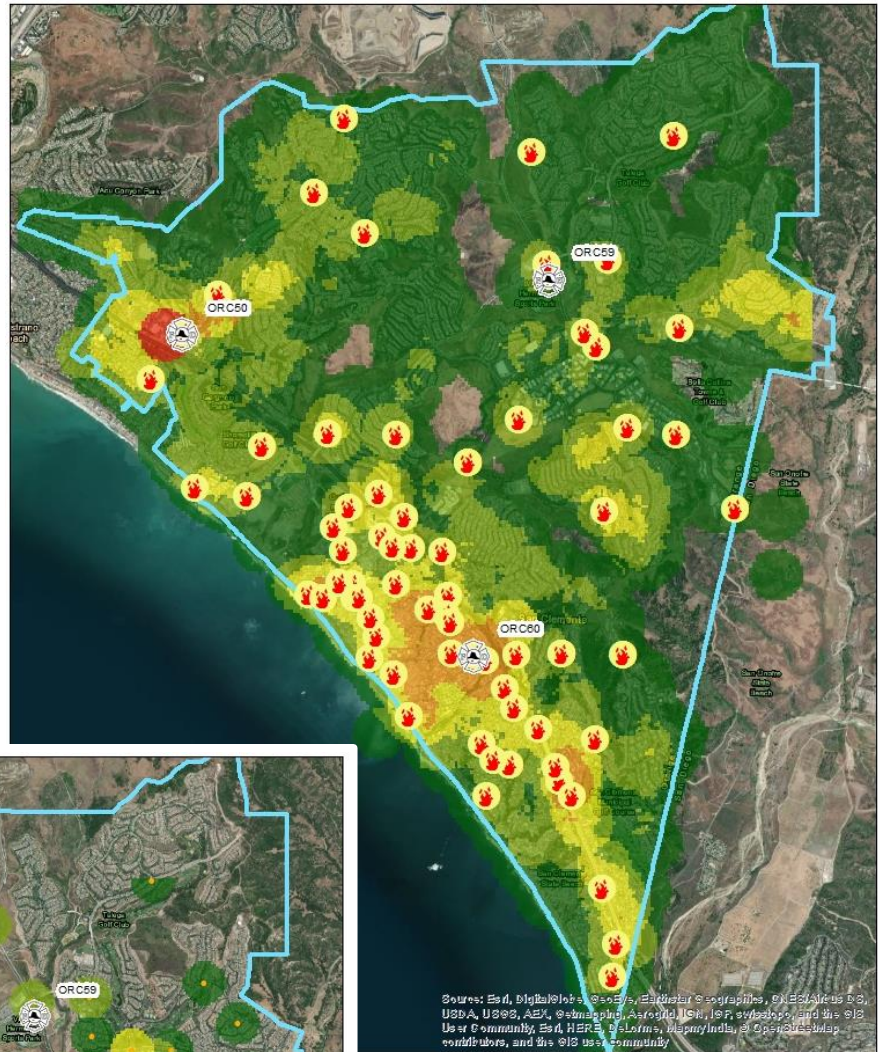
Sources: Esri, DigitalGlobe, GeoEye, Earthstar Geographics, CN ES/Airbus DS, USDA, USGS, AeroV, GeoEye, IGN, SIP, swisstopo, and the GIS User Community, Esri, HERE, DeLorme, Mapbox, OpenStreetMap contributors, and the GIS User Community



Sources: Esri, DigitalGlobe, GeoEye, Earthstar Geographics, CN ES/Airbus DS, USDA, USGS, AeroV, GeoEye, IGN, SIP, swisstopo, and the GIS User Community, Esri, HERE, DeLorme, Mapbox, OpenStreetMap contributors, and the GIS User Community

2020 Incident Density

2020 Incidents with Fire Overlay



2020 Traffic Collision Density

Your Firefighters in Action

Incident # 20-150497 December 31st

Truck 59 responded to a possible garage fire on Corte Cardelina. Upon arrival Truck 59 found a 2-story, single family resident with sprinkler activation in the garage. No active fire due to sprinklers. Truck 59 shut down the water and electricity. Possible cause of fire due to lithium ion battery for remote control car plugged into power strip.



Incident # 20-128711 November 12th

Crews responding to commercial structure fire at Moen Woodworks on Avenida De La Estrella.

The Engine 50 crew, along with the OCSD and VFW, drive by to wish veteran Elmo Greve a happy 100th birthday from his home on Calle Frontera on October 15th.



Incident # 20-125976
November 5th

Truck 59 responded to a structure fire on Calle Saltamontes. Truck 59 arrived to find a 2-story single family home with an audible alarm, light smoke upstairs and water coming through the ceiling of the open garage. The fire was found to be in the wall of a child's bedroom. A single sprinkler head activation kept the fire in check until it could be completely extinguished by fire personnel. The fire was confined to one wall and did not extend into the ceiling/ attic.

