



San
Clemente
THE SPANISH VILLAGE BY THE SEA



San Clemente Habitat and Open Space Conservation



San
Clemente
THE SPANISH VILLAGE BY THE SEA



San Clemente Open Space

- San Clemente OS traditions
- History of mitigation and habitat conservation agreements
- Measure V
- Centennial General Plan



San
Clemente
THE SPANISH VILLAGE BY THE SEA



Open Space Traditions

- "I have a clean canvas and I am determined to paint a clean picture. Think of it — a canvas five miles long and one-half miles wide!" Ole Hansen
- Specific Plan prescribes "the extent and location of open space."
- Marblehead Coastal – San Clemente Trails



San Clemente
THE SPANISH VILLAGE BY THE SEA

Mitigation Agreements

- Segment 1. Talega
- Tract No. 16252 (May 28, 2003)
- Talega DA (Feb. 27, 2002)
- Talega CC&Rs (Aug. 2, 2004)
- Forster Ranch CC&Rs (Feb. 16, 2000)
- Streambed Alteration Agreement (Jul. 1, 1999)
- Segment 2. Forster Ranch Mitigation Area
- Forster Ranch IOD (May 6, 1998)
- Section 404 permit (May 20, 1999)
- Six Forster Ranch Conservation Easements (Jun. 16, 1999)
- Segment 3. Pacifica San Clemente
- Open Space Easement (Dec. 24, 1996)
- Pacifica CC&Rs (Feb. 3, 1997)
- Segment 4. Marblehead
- Conservation Easement (Aug. 21, 2018)





**San
Clemente**
THE SPANISH VILLAGE BY THE SEA



Measure V

Measure V was adopted on November 4, 2008. It was Ordinance 1475, which is incorporated into the current General Plan by Policy BPR-4.09 of the Beaches, Parks and Recreation Element.

Measure V requires voter approval to adopt or amend the General Plan, a specific plan, or the Zoning Code to change an open space designation or zone to allow a non-open space use.



San
Clemente
THE SPANISH VILLAGE BY THE SEA



Centennial General Plan

- **Primary Land Use Goal:** Achieve a balance of uses that includes protected open space.
- **LU-1.02:** Residential developments provide access to open space.
- **LU-14.04:** Economic strategies promote open space.
- **NR-1.02:** Roads designed to protect open space.
- **NR-2.07:** Utilities designed to blend in with open space.

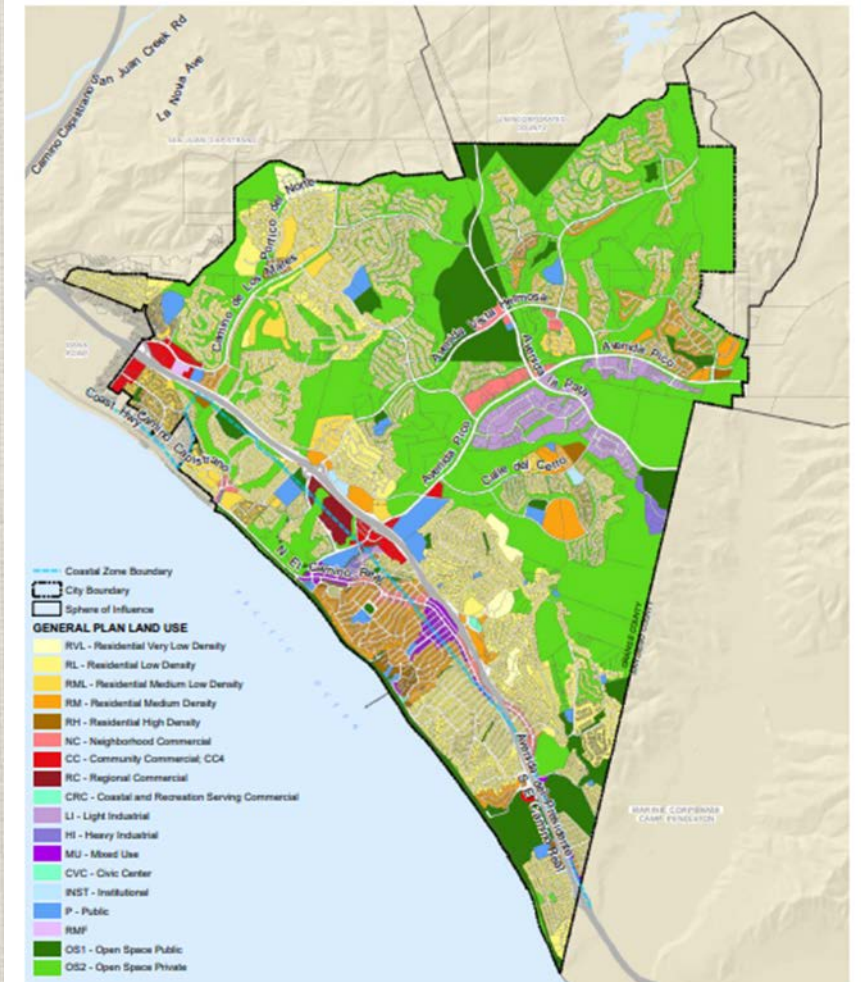


Figure LU-1A
Land Use

0 1,850 3,700 7,400 Feet



8/23/2018



San Clemente
THE SPANISH VILLAGE BY THE SEA



Impacts of San Clemente Freeway

Alt. Route	Alt. 14 (acres)	Alt. 17 (acres)
Public and Private OS	208 ac	432.70 ac
Federal Conservation Easement	331.44 ac	0 ac
Total:	539.44 ac	432.70 ac