



San  
Clemente  
THE SPANISH VILLAGE BY THE SEA



# San Clemente

## *Toll Road Town Hall*



San  
Clemente  
THE SPANISH VILLAGE BY THE SEA



# Statutory Background

- 1988 Legislature authorizes Foothill/Eastern corridor:  
  
“32 miles to the San Diego Freeway (I-5) below San Clemente in San Diego County.”





San  
Clemente  
THE SPANISH VILLAGE BY THE SEA



## 2016 Agreements

- Protected San Onofre and State Park
- But . . .



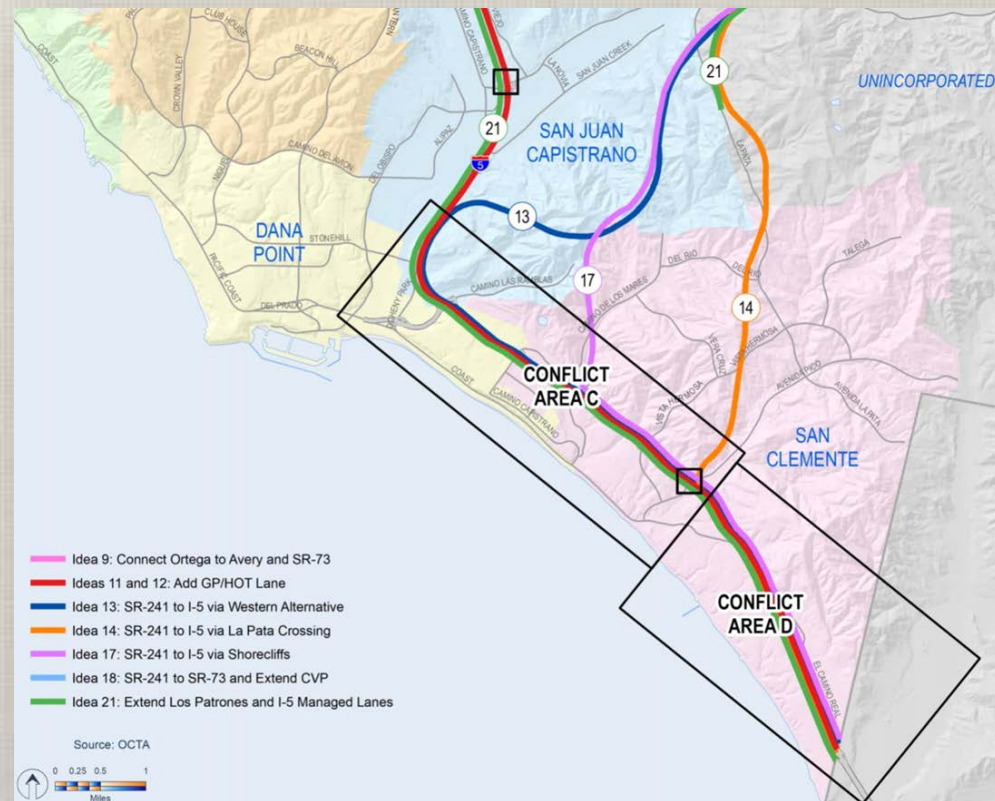




San  
Clemente  
THE SPANISH VILLAGE BY THE SEA



# Inevitable Outcome







San  
Clemente  
THE SPANISH VILLAGE BY THE SEA



# City Plans







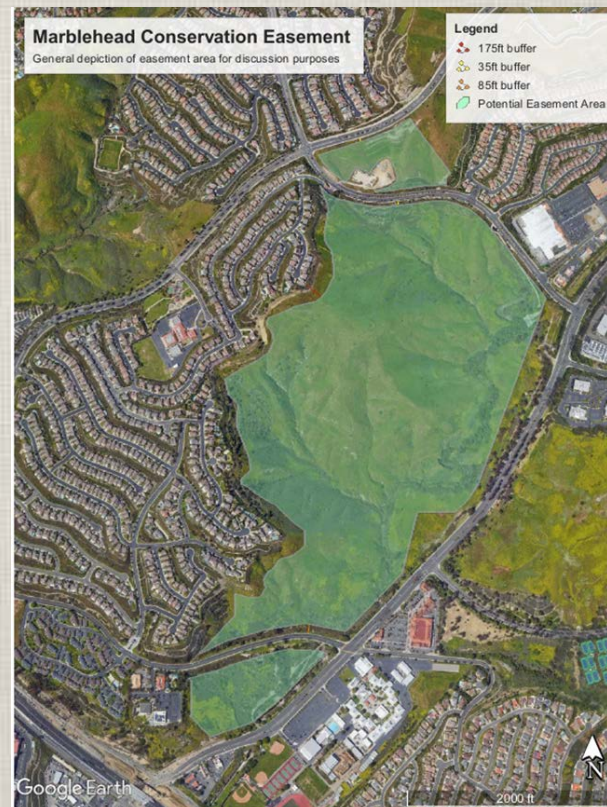
San  
Clemente  
THE SPANISH VILLAGE BY THE SEA



# Marblehead Conservation Easement

## Summer 2018

- 287 acre conveyance to City
- Compare Marblehead Coastal at 70 acres
- Market and publicize “bank”
- Prepare for recruitment of non-profit for sale, restoration, and maintenance







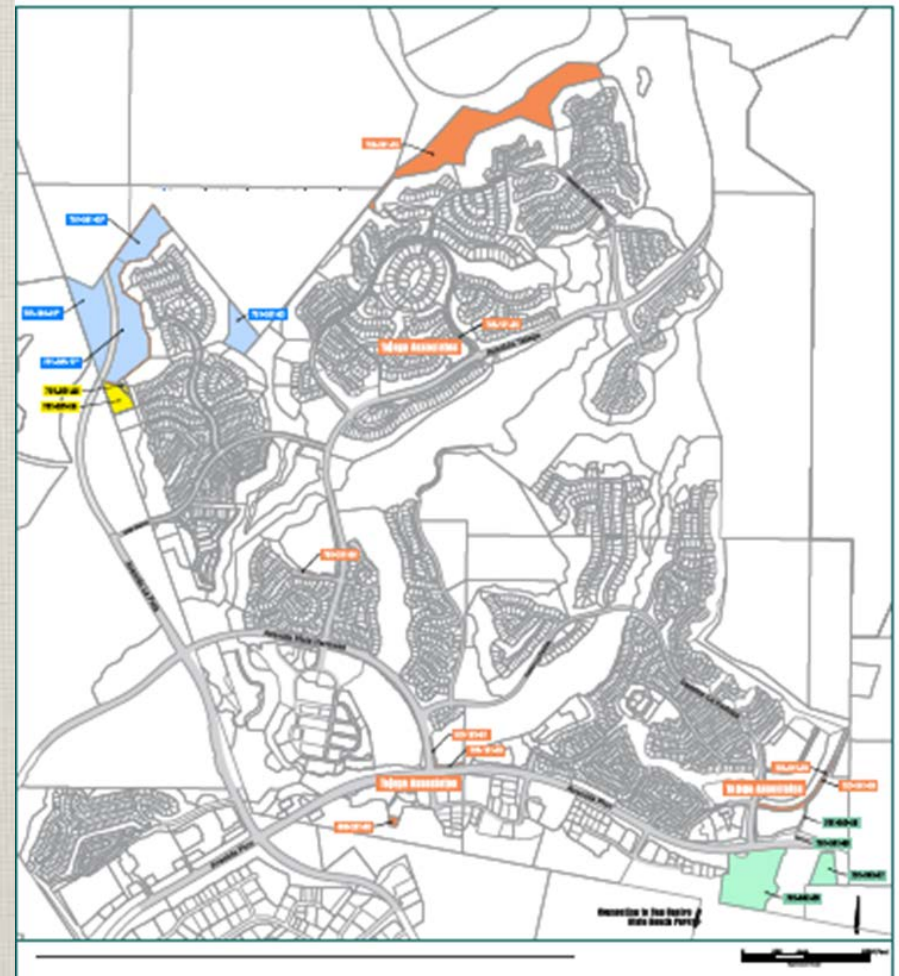
San  
Clemente  
THE SPANISH VILLAGE BY THE SEA



# Talega

Spring 2019

- HOA and master developer conveyance in process
- Connection and realignment of master trails
- Market and publicize “bank”
- Prepare for recruitment of non-profit for sale, restoration, and maintenance
- Possible endowment







San  
Clemente  
THE SPANISH VILLAGE BY THE SEA



## City's Lawsuit

- TCA /Caltrans lack authority to alter statutory route
- TCA can't close free County arterials once open (Los Patrones)
- Alternatives 14 and 17 conflict with regional and local general plans and transportation master plans
- TCA can't collect fees to build a freeway it cancelled
- "Traffic relief" is not an "accurate stable, and finite" project (*Washoe Meadows*)





San  
Clemente  
THE SPANISH VILLAGE BY THE SEA



## City's Position

- Caltrans shouldn't redirect South County share of State taxes and Measure M funds
- These improvements won't be warranted for at least 50 years
- Alternative 22 does about 90% of the work at 10% of the cost
- Some ideas are too stupid to study