

**in this issue >>>**

- *Academy 50 Graduation*
- *Wildland Firefighting*
- *ABC's of Water Safety*
- *Incident Responses*
- *Incidents by Category*
- *Incident Photos*



**ORANGE COUNTY FIRE AUTHORITY**  
**DIVISION 3, BATTALION 6**  
**DIVISION CHIEF ROB CAPOBIANCO**

**A Quarterly Update of What's Going on in Division 3**

# San Clemente 2020 2<sup>nd</sup> Quarter

## Keep in Touch

**Division Chief Rob Capobianco**

Office: (949) 347-2273

Email: [RobCapobianco@ocfa.org](mailto:RobCapobianco@ocfa.org)

**Battalion Chief TJ McGovern (A Shift)**

Office: (949) 487-0102

Email: [TJMcGovern@ocfa.org](mailto:TJMcGovern@ocfa.org)

**Battalion Chief Cheyne Maule (C Shift)**

Office: (949) 487-0102

Email: [CheyneMaule@ocfa.org](mailto:CheyneMaule@ocfa.org)

**Division Administrative Captain**

**Bill Lackey**

Office: (949) 347-2275

Email: [WilliamLackey@ocfa.org](mailto:WilliamLackey@ocfa.org)

**Division Administrative Assistant**

**Michelle Schneider**

Office: (949) 347-2277

Email: [MichelleSchneider@ocfa.org](mailto:MichelleSchneider@ocfa.org)

## Academy 50 Graduation – A Little Different

Congratulations to the OCFA's Academy 50 firefighter graduates! After four long months, these 37 recruits have graduated to firefighter! Due to COVID-19, OCFA conducted its first limited graduation ceremony on May 20<sup>th</sup>. Social distancing was in place and a select audience attended. The ceremony streamed

live for loved ones and the community to see. Family members will have the opportunity to pin the newly earned badges on their firefighter (as tradition calls) when a full traditional graduation is held in the future.



# 'Tis the Season... *Wildland Firefighting*

Wildland firefighting requires different equipment and tactics from a structure response. When a brush fire occurs, we'll send various types of firefighting assets. Dozers remove fuel sources and create a barrier. Hand crews augment that effort. Helicopters are a valuable asset to our firefighting effort in the air, while firefighters are on the ground to ensure the fire is extinguished.

To keep these wildland firefighting skills sharp, OCFA firefighters partake in wildland manipulative drills annually. Fire shelter deployment, progressive hose lays and mobile pumping are some of the skills trained in. Mobile pumping is utilized when the topography allows for the maneuvering of an engine along the fire perimeter. A Type III engine drives along the fire's edge and a firefighter walks just ahead of the engine, extinguishing the fire with a bumper line. If mobile pumping can no longer be performed, a progressive hose lay is utilized. In this situation, hose is systemically added to the previous hose line while a wet line is



*Firefighters practicing a progressive hose lay from a Type III engine*

constructed along the fire's edge since the engine is not able to move along with the firefighters.

Fire shelter deployment is utilized when an entrapment situation occurs. Practice includes proper site selection, using high-powdered fans to simulate high winds, running up a slope to deploy, and deploying while laying on the ground.

OCFA also partakes in prescribed burns with multiple agencies. It allows firefighters to get real life training while also helping to manage vegetation growth.

*Crews practicing deploying simulation shelters under different conditions*



*A prescribed burn in the Camp Pendleton area*



# ABC'S OF WATER SAFETY



Water safety starts at home. Keeping yourself and others safe in and around the water is as easy as ABC. Follow the safety tips below to make sure you know how to be water safe!



*Children and adults drown without a sound. No one should ever swim alone.*



**Orange County  
Fire Authority**

(714) 573-6200  
ocfa.org



## **A is for ACTIVE ADULT SUPERVISION**

- Keep infants and toddlers within an arm's reach.
- No one should ever swim alone, including adults.
- Never rely on water wings, rafts, or other swimming aids in place of U.S. Coast Guard approved life jackets.
- Assign an adult to be a Water Watcher, actively keeping their eyes on the water without ANY distractions.
- If a child or adult is missing, every second counts! Check the water FIRST!

## **B is for BARRIERS**

- Install and maintain proper fencing around the pool and spa to isolate swimming areas.
- Use multiple layers of protection, such as fences, gates, doors, alarms, and safety covers.
- Use self-closing, self-latching gates that open outward and away from the pool.
- Remove items such as chairs or tables that a child could use to climb over a fence.

## **C is for CLASSES**

- Learn to swim by taking lessons.
- Learn first aid and CPR. Always keep a phone nearby to call 9-1-1.
- Teach children that running, jumping, and pushing others on pool decks is dangerous and can cause injuries. Always enter the pool feet first so you know how deep the water is in that area.

## **Drain Safety**

- Keep children away from pool and spa drains to avoid entrapment and entanglement.
- Keep long hair tied back and remove dangling items like jewelry or bathing suit ties.
- Install compliant safety drain covers and automatic shut-off pump systems.
- Know where the pool and spa pump switch is and how to turn it off and on.

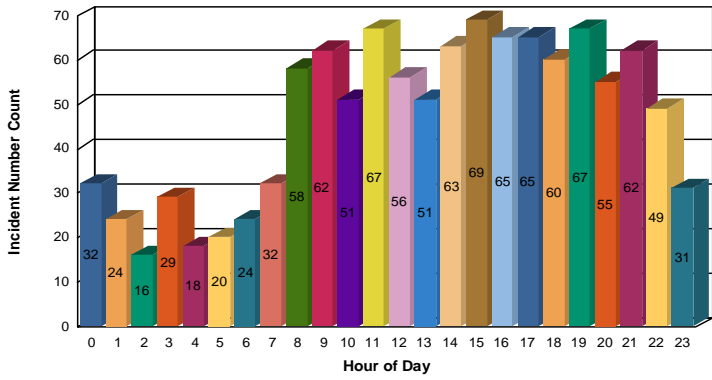
# Incident Responses

CALL TYPE	JAN	FEB	MAR	APR	MAY	JUN	JUL	AUG	SEP	OCT	NOV	DEC	Total	Monthly Average
Medical Aid - Automatic Paramedic Alarm	22	18	21	14	18	15							108	18
Medical Aid- Back to Bed/ Lift Assist	11	12	3	6	5	5							42	7
Medical Aid- Cardiac (Chest Pain, Cardiac Arrest)	29	32	36	21	18	20							156	26
Medical Aid - Stroke (Unconscious, Altered Mental State)	39	37	25	18	31	29							179	30
Medical Aid- Diabetic Emergency	5	4	5	3	4	5							26	4
Medical Aid- Fall	21	19	14	61	69	69							253	42
Medical Aid - Illness (Sick Person, Injury, Illness)	73	83	54	24	27	33							294	49
Medical Aid- Respiratory (Respiratory Arrest, Difficulty Breathing)	55	43	29	0	2	0							129	22
Medical Aid- Abdominal Pain	17	14	16	14	13	4							78	13
Medical Aid- Seizure	15	20	9	10	10	8							72	12
Medical Aid - Misc. (Choking, Headache, Pregnancy, Bleeding, Assault, Burn, Intoxication)	48	46	94	121	123	104							536	89
Medical Aid- Traffic Collision (Auto vs Auto, Auto vs Pedestrian)	30	22	22	13	27	16							130	22
Fire - Structure	7	4	4	3	1	3							22	4
Fire - Vehicle/ Dumpster	3	2	3	4	0	6							18	3
Fire- Vegetation, Brush, Tree, Bush, Misc.	10	2	4	3	1	9							29	5
Service Call- Misc. (Odor Check, Stuck Elevator, Automatic Fire Alarm)	52	34	42	33	40	63							264	44
<b>Incidents</b>	<b>437</b>	<b>392</b>	<b>381</b>	<b>348</b>	<b>389</b>	<b>389</b>	<b>0</b>	<b>0</b>	<b>0</b>	<b>0</b>	<b>0</b>	<b>0</b>	<b>2336</b>	<b>389</b>

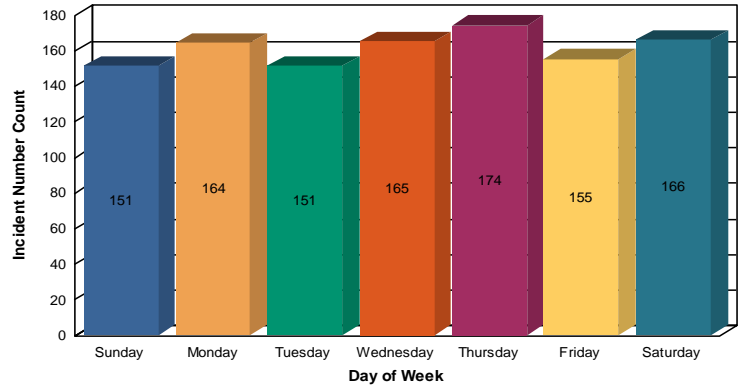
CALL TYPE	JAN	FEB	MAR	APR	MAY	JUN	JUL	AUG	SEP	OCT	NOV	DEC	TOTAL	MO. AVG.
Medical Aids	365	350	328	305	347	308	0	0	0	0	0	0	2003	334
Fires	20	8	11	10	2	18	0	0	0	0	0	0	69	12
Misc	52	34	42	33	40	63	0	0	0	0	0	0	264	44

# Incidents by Category

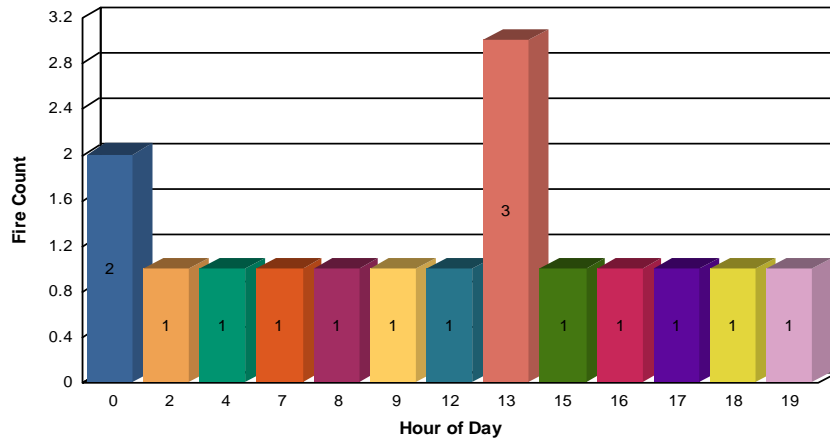
### Incident Count by Hour of Day



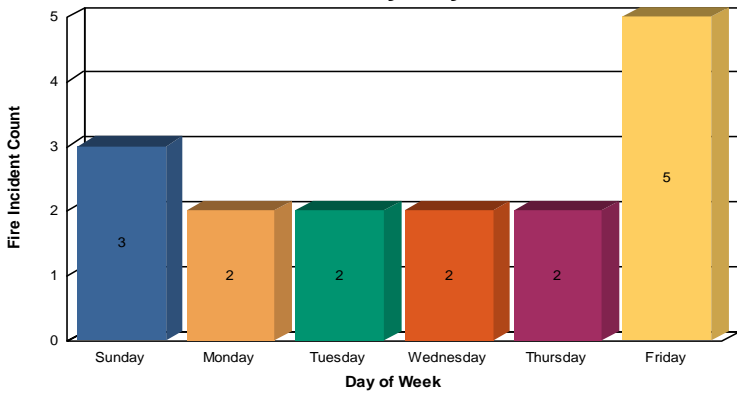
### Incident By Day of Week



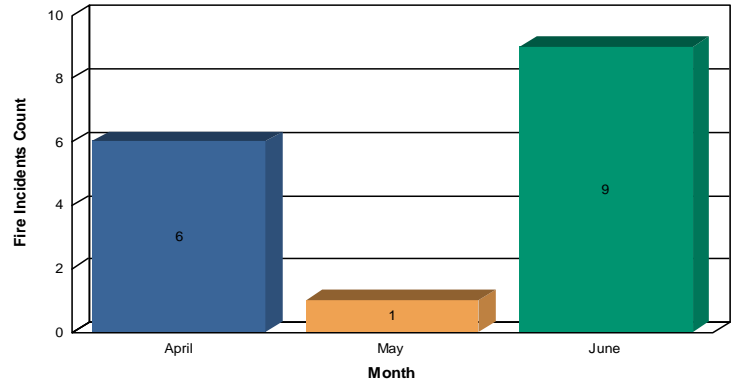
### Fires by Hour of Day



### Fires Incidents by Day of Week



### Fires Incidents by Month





## Incident Photos



### April 6<sup>th</sup> - Incident # 20-041423

Large tree down, crushing truck near Avenida Victoria & Avenida Santa Barbara. Fortunately, no one was injured.



### June 9<sup>th</sup> - Incident # 20-065108

Smoke from vegetation fire on Camp Pendleton seen in the background. OCFA Crews & Equipment dozer reinforcing a defensible space between San Clemente and the marine base seen in the foreground.