

## in this issue >>>

- *High Wind Event Upstaffing*
- *Fire Explorers: Auto Extrication*
- *Girls Empowerment Camp*
- *Smoke Alarm Safety*
- *Carbon Monoxide Safety*
- *Incident Responses*
- *Community Event Totals*
- *Your Firefighters in Action*



**ORANGE COUNTY FIRE AUTHORITY**  
**DIVISION 3, BATTALION 6**  
**DIVISION CHIEF ROB CAPOBIANCO**

A Quarterly Update of What's Going on in Division 3

# San Clemente - 4<sup>th</sup> Quarter

## Keep in Touch

**Division Chief Rob Capobianco**

Office: (949) 347-2273

Email: [RobCapobianco@ocfa.org](mailto:RobCapobianco@ocfa.org)

**Battalion Chief TJ McGovern (A Shift)**

Office: (949) 487-0102

Email: [TJMcGovern@ocfa.org](mailto:TJMcGovern@ocfa.org)

**Battalion Chief Mike Petro (B Shift)**

Office: (949) 487-0102

Email: [MikePetro@ocfa.org](mailto:MikePetro@ocfa.org)

**Battalion Chief Cheyne Maule (C Shift)**

Office: (949) 487-0102

Email: [CheyneMaule@ocfa.org](mailto:CheyneMaule@ocfa.org)

**Division Administrative Captain**

**Darren Roberson**

Office: (949) 347-2275

Email: [DarrenRoberson@ocfa.org](mailto:DarrenRoberson@ocfa.org)

**Division Administrative Assistant**

**Michelle Schneider**

Office: (949) 347-2277

Email: [MichelleSchneider@ocfa.org](mailto:MichelleSchneider@ocfa.org)

## High Wind Event Upstaffing

Southern California once again saw historic fire behavior throughout the month of October. OCFA's preparation and response to these fire weather events continue to evolve. This year the OCFA was able to up-staff more than 40 engines and 3 helicopters ahead of the wind events. This allowed OCFA to not only assist neighboring agencies with large fires but to have additional equipment available for response here in Orange County. Orange County did see numerous fires that were able to be kept small with an aggressive response both from ground resources as well as a robust air operations response. Additional resources were utilized within south county during a house fire during the peak of the wind event. Crews were able to control and monitor downwind hazards to make sure the fire didn't spread through the community. OCFA's air operations response has been bolstered with additional helicopters as well as a fixed wing aircraft responding to local fires for mapping, intelligence and resource and evacuation planning.



Structure fire on October 30<sup>th</sup>. Fire extended into both homes during the wind event and went 2 alarms with a strike team that responded for downwind ember cast.

# Fire Explorers: Auto Extrication



OCFA's Fire Explorer program offers people between the ages of 14 and 21 real life experiences, training, and exposure to the career opportunities of firefighters. Explorers are offered a combination of classroom work and hands-on instruction. Since the year 2000 over 1,000 youth have participated in the program. A recent internal survey revealed that approximately 200 current OCFA employees started in the explorer program. Here, we show Engine 64 and Truck 85 assisting the explorers with auto extrication.



## Girls Empowerment Camp

Saturday, March 7<sup>th</sup> &  
Sunday, March 8<sup>th</sup>, 2020.  
8 am – 5 pm both days.

This event is free, all  
people between the ages of  
14 – 18 are welcome!

To register, please visit  
[ocfa-gec.eventbrite.com](http://ocfa-gec.eventbrite.com)

## Smoke Alarms: They Really Do Save Lives

Two-thirds of all home fire deaths occur in homes with no working smoke alarms. Protect your family by installing smoke alarms, inspecting them, and practicing home fire drills.

### Install:

- In every bedroom, hallway outside bedrooms, and on every level of the home
- Replace all alarms when they're 10 years old
- Use interconnected smoke alarms. If one sounds, they all sound
- Use both ionization and photoelectric smoke alarms
- Special alarms are available to those that are deaf or hard of hearing

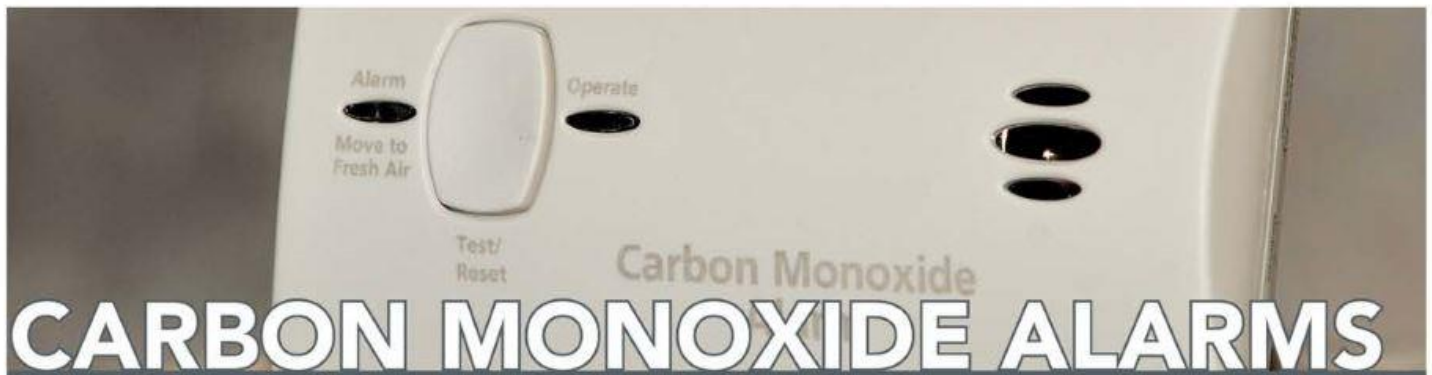
### Inspect:

- Test all alarms once a month
- Follow the manufacturer's instructions for cleaning to keep alarms working properly

### Protect:

- Draw a home escape plan that shows two ways out of every room
- Include an outside meeting place
- Teach children what smoke alarms sound like and what to do if they hear them
- Practice home fire drills twice a year





# CARBON MONOXIDE ALARMS

Carbon Monoxide (CO) alarms should be installed in all homes, apartments and workplaces. They should be installed outside each sleeping area and on every level of the home. It is best to use interconnected CO alarms so when one sounds, all sound.

Carbon monoxide (CO) is a deadly odorless, poisonous gas that can make a person feel sick. In the home, fuel-burning devices for heating and cooking can be sources of carbon monoxide.



Orange County  
Fire Authority

714-573-6200

[www.ocfa.org](http://www.ocfa.org)



Test CO alarms at least once a month.

When a CO alarm sounds, assume that a real danger is present. You must get fresh air, so move all people and pets out of the structure immediately. Once outside, call the fire department. Do not re-enter until the fire department has declared the area safe and instructed you to do so.

## PREVENT CO POISONING

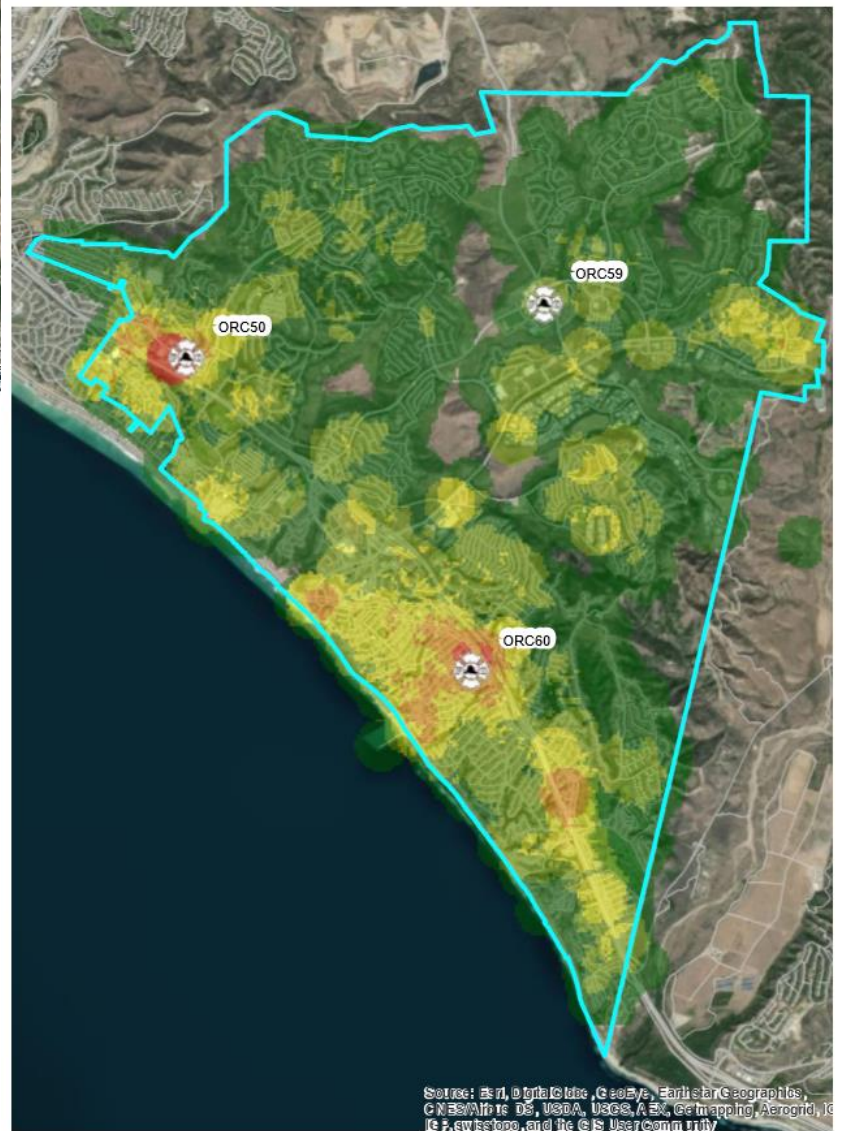
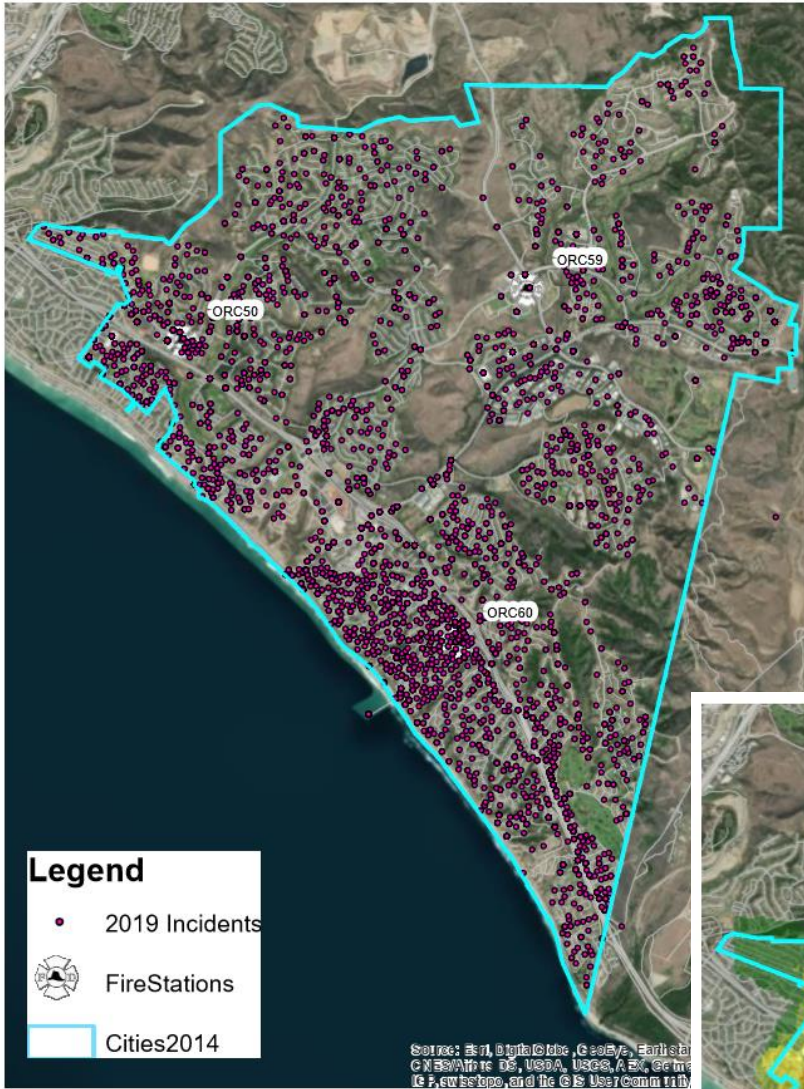
- Have a professional inspect your chimneys and heating equipment each year.
- Don't keep your car running inside your garage, even if your garage doors are open.
- Gas and charcoal grills and generators can produce CO. Use them outdoors in well-ventilated areas away from windows, doors and vent openings.
- Clear all debris from dryer, furnace, stove, and fireplace vents.
- Open the damper when using a fireplace for adequate ventilation.
- Never use your oven or stove to heat your home.
- Do not cover the bottom of natural gas or propane ovens with aluminum foil. Doing so blocks the combustion air flow through the appliance and can produce carbon monoxide.

# Incident Responses

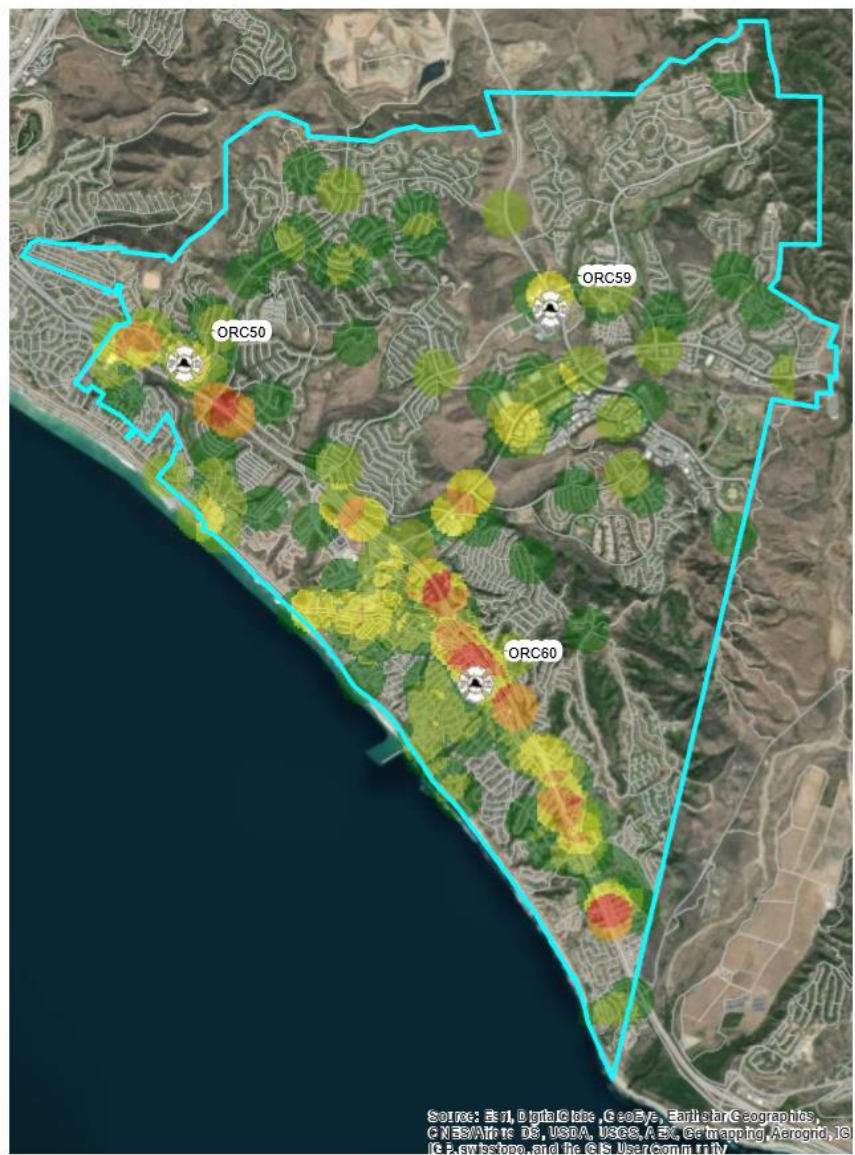
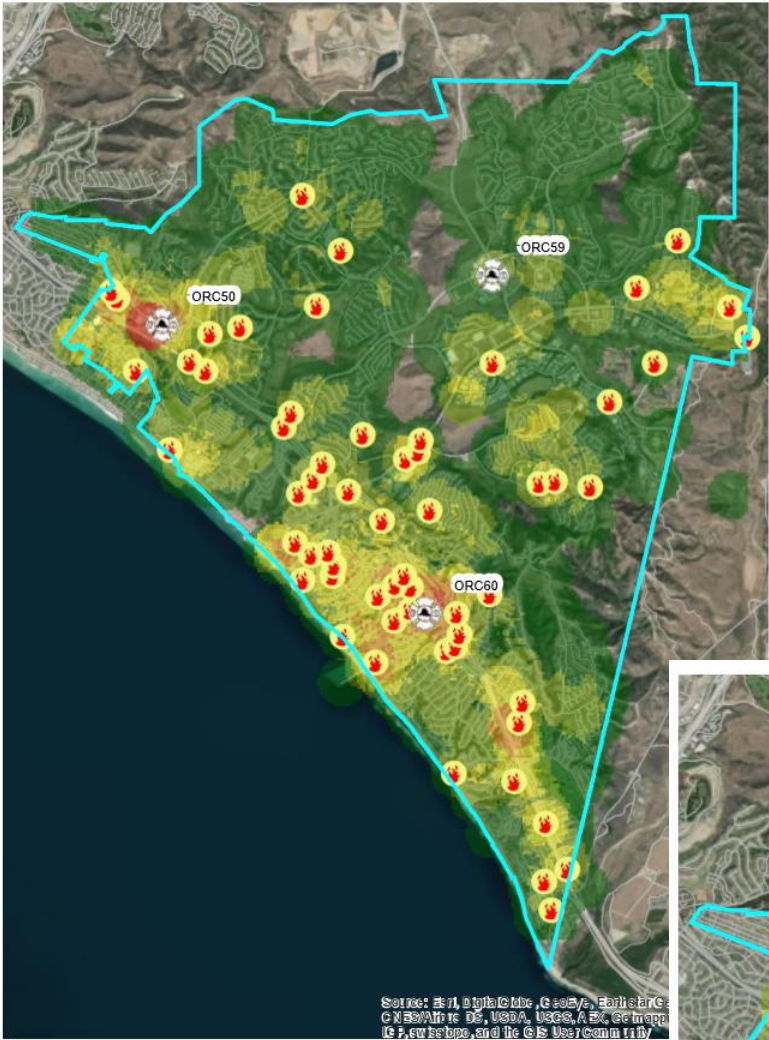
| CALL TYPE   | JAN        | FEB        | MAR        | APR        | MAY        | JUN        | JUL        | AUG        | SEP        | OCT        | NOV        | DEC        | Total       | Monthly Average |
|---|------------|------------|------------|------------|------------|------------|------------|------------|------------|------------|------------|------------|-------------|-----------------|
| Medical Aid - Automatic Paramedic Alarm   | 27         | 17         | 8          | 15         | 11         | 19         | 15         | 19         | 21         | 21         | 14         | 24         | 211         | 18              |
| Medical Aid- Back to Bed/ Lift Assist   | 8          | 12         | 9          | 7          | 12         | 6          | 7          | 11         | 18         | 14         | 9          | 13         | 126         | 11              |
| Medical Aid- Cardiac (Chest Pain, Cardiac Arrest)   | 30         | 25         | 41         | 34         | 33         | 25         | 33         | 27         | 29         | 36         | 34         | 38         | 385         | 32              |
| Medical Aid - Stroke (Unconscious, Altered Mental State)                                  | 60         | 26         | 41         | 27         | 32         | 33         | 32         | 28         | 34         | 32         | 38         | 36         | 419         | 35              |
| Medical Aid- Diabetic Emergency   | 9          | 9          | 9          | 10         | 7          | 8          | 6          | 7          | 11         | 11         | 8          | 6          | 101         | 8               |
| Medical Aid- Fall   | 53         | 46         | 61         | 44         | 48         | 43         | 69         | 75         | 83         | 27         | 18         | 32         | 599         | 50              |
| Medical Aid - Illness (Sick Person, Injury, Illness)                                      | 79         | 71         | 53         | 61         | 60         | 75         | 51         | 63         | 43         | 73         | 70         | 64         | 763         | 64              |
| Medical Aid- Respiratory (Respiratory Arrest, Difficulty Breathing)                       | 19         | 26         | 33         | 18         | 21         | 23         | 20         | 23         | 22         | 54         | 49         | 54         | 362         | 30              |
| Medical Aid- Abdominal Pain   | 14         | 12         | 14         | 12         | 18         | 18         | 9          | 25         | 21         | 15         | 21         | 14         | 193         | 16              |
| Medical Aid- Seizure  | 17         | 10         | 12         | 15         | 12         | 14         | 13         | 13         | 13         | 17         | 14         | 13         | 163         | 14              |
| Medical Aid - Misc. (Choking, Headache, Pregnancy, Bleeding, Assault, Burn, Intoxication) | 42         | 56         | 54         | 53         | 45         | 44         | 65         | 73         | 61         | 54         | 45         | 61         | 653         | 54              |
| Medical Aid- Traffic Collision (Auto vs Auto, Auto vs Pedestrian)                         | 22         | 29         | 18         | 18         | 25         | 22         | 22         | 36         | 28         | 24         | 42         | 22         | 308         | 26              |
| Fire - Structure  | 4          | 8          | 4          | 5          | 4          | 2          | 3          | 11         | 4          | 4          | 7          | 2          | 58          | 5               |
| Fire - Vehicle/ Dumpster  | 0          | 1          | 3          | 1          | 4          | 4          | 2          | 3          | 3          | 3          | 2          | 2          | 28          | 2               |
| Fire- Vegetation, Brush, Tree, Bush, Misc.  | 7          | 3          | 4          | 3          | 5          | 5          | 6          | 7          | 5          | 5          | 5          | 2          | 57          | 5               |
| Service Call- Misc. (Odor Check, Stuck Elevator, Automatic Fire Alarm)                    | 48         | 46         | 45         | 31         | 39         | 52         | 45         | 70         | 68         | 22         | 50         | 53         | 569         | 47              |
| <b>Incidents</b>  | <b>439</b> | <b>397</b> | <b>409</b> | <b>354</b> | <b>376</b> | <b>393</b> | <b>398</b> | <b>491</b> | <b>464</b> | <b>412</b> | <b>426</b> | <b>436</b> | <b>4995</b> | <b>416</b>      |

| CALL TYPE    | JAN | FEB | MAR | APR | MAY | JUN | JUL | AUG | SEP | OCT | NOV | DEC | TOTAL | MO. AVG. |
|--------------|-----|-----|-----|-----|-----|-----|-----|-----|-----|-----|-----|-----|-------|----------|
| Medical Aids | 380 | 339 | 353 | 314 | 324 | 330 | 342 | 400 | 384 | 378 | 362 | 377 | 4283  | 357      |
| Fires        | 11  | 12  | 11  | 9   | 13  | 11  | 11  | 21  | 12  | 12  | 14  | 6   | 143   | 12       |
| Misc         | 48  | 46  | 45  | 31  | 39  | 52  | 45  | 70  | 68  | 22  | 50  | 53  | 569   | 47       |

# 2019 Incidents

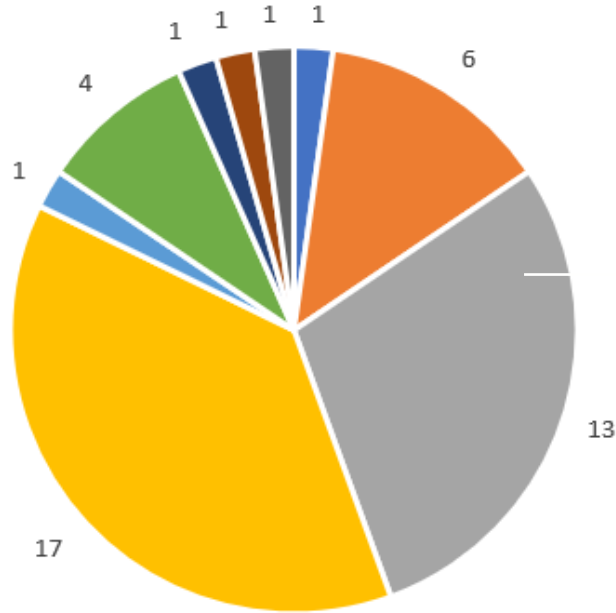


# 2019 Incidents with Fire Overlay



# 2019 Traffic Collision Incidents

## Year End Totals – Community Events



- CERT/ CEPA
- Community Event
- School Program/ Engine/ Truck Visit
- Station Tour
- Fire Safety Presentation
- Ride Along
- Spark of Love Appearance
- Misc. Speaking Engagement
- Career Fair/ Mentoring

## Firefighters in Action



Kindergarten students from San Clemente Christian School had a great tour and fire safety presentation at station 59 – October 29<sup>th</sup>



**October 25<sup>th</sup> – Incident # 19-123183**

At 0920 hours, ECC received reports of a possible vegetation fire at Avenida Pico & Cristianitos Road. A full vegetation response was dispatched. Along with the PROS Announcement made. Additional reports advised at that is was at the gates of the Talega substation. OCSD was also enroute, along with MCP Fire was also sending a full response from their side. At 0930 hours, DUKE was on scene and advised approximately 1 to 2 acres at this time. At 0936 hours, Batallion 6 assumed Talega IC. At 0958 hours, IC advised forward progress has been stopped, no structures threatened. At 1252 hours, IC advised 100% contained, mop up in progress, transfer of commment to B36. P7 was released and will come back and check at 1400, 1600, and 1800, will report finds to B6 & ECC. At 1317 hours, B36 advised all units were complete.



Helicopter prestaged near station 59 for October's high wind event upstaffing