

in this issue >>>

- *Coulson Aviation Program*
- *Automatic Chest Compression Device*
- *New Search & Rescue Dogs*
- *Red Flag Warning*
- *Incident Responses*
- *Incidents by Category*
- *Your Firefighters in Action*
- *Community Events*



ORANGE COUNTY FIRE AUTHORITY
DIVISION 3, BATTALION 6
DIVISION CHIEF ROB CAPOBIANCO

A Quarterly Update of What's Going on in Division 3

San Clemente – 3rd Quarter

Keep in Touch

Division Chief Rob Capobianco

Office: (949) 347-2273

Email: RobCapobianco@ocfa.org

Battalion Chief Mike Petro (B Shift)

Office: (949) 487-0102

Email: MikePetro@ocfa.org

Battalion Chief Vince Carpino (C Shift)

Office: (949) 487-0102

Email: VincentCarpino@ocfa.org

Division Administrative Captain

Darren Roberson

Office: (949) 347-2275

Email: DarrenRoberson@ocfa.org

Division Administrative Assistant

Michelle Schneider

Office: (949) 347-2277

Email: MichelleSchneider@ocfa.org

Community Education Specialist

Polly Bowen

Office: (949) 347-2256

Email: PollyBowen@ocfa.org

OCFA LAUNCHES FIRST EVER NIGHTTIME HOVER-FILLING HELICOPTER PROGRAM



Wildland fires, which now occur year round, remain the most significant natural disaster that threatens life and property in California. Everyone agrees, more needs to be done to stop them.

On July 9th, OCFA in partnership with Southern California Edison and Coulson Aviation launched a first ever pilot program in the U.S. that includes a nighttime hover-filling Type 1 helitanker and Type 2 recon helicopter. This new aerial firefighting resource is available to counties throughout Southern California. To have this first ever aerial resource that can hover-fill and precisely drop large volumes of water on a fire at night will make a significant difference. The ability to determine the impact we've made on stopping a fire no longer needs to wait until daylight.

OCFA has since put the Coulson helicopters to good use. One of the assignments for the Type 1 Helitanker was the Saddleridge fire in Los Angeles, in which it dropped 16,000 gallons of water throughout the night.

A PASSION TO IMPROVE...

Recently the Automatic Chest Compression Device "ACCD" was introduced to the field. The device will allow First Responders to maintain continuous CPR throughout the duration of a cardiac arrest. Compressions will not stop to move the patient to the gurney, insert an airway or even moving the patient downstairs or a tight hallway. This device **WILL** save lives.



OCFA EMTs and Paramedics, seen here, train on the new lifesaving piece of equipment.



MEET OCFA'S NEW ADDITIONS TO THE FAMILY!

On September 26th Cooper, Diesel, Mila and Kendri officially joined the OCFA family. These search and rescue dogs were sworn in and received their badges. They are ready to respond to emergencies with their handlers across the nation. OCFA is more prepared than ever for these types of incidents.





A Red Flag Warning is issued to signal the need for heightened awareness and increased fire safety.



Knowing how to respond when Red Flag Warnings are issued is your responsibility if you live, work, or even spend time in or near areas prone to wildfires.



Orange County
Fire Authority

www.ocfa.org/RSG

Conditions needed to issue a Red Flag Warning, include:

- Sustained winds 15 MPH or greater
- Relative humidity of 25% or less
- Temperatures greater than 75° F

If these conditions are present or likely to happen within 24 hours, red flags are displayed at fire stations and participating county facilities, public libraries, and city halls. Red flags are also put up at chosen locations along highways, streets, and toll roads.

Safety guidelines recommended during Red Flag Warnings include the following:

- Do all yard work that requires a gas or electric motor before 10 a.m. and never when the wind is blowing
- Remove rocks from the area before you begin using any equipment
- Keep flammable materials away from gas-powered equipment
- Never drive or park vehicles on dry grass or brush
- Use lawnmowers on lawns only
- Grease trailer wheels, check tires, and make sure safety chains are not touching the ground
- Use caution with gas lanterns, barbeques, gas stoves, and anything else that can cause a wildfire
- Follow park, trail, camping, campfire restrictions and closure signs
- Throw away cigarettes or other smoking supplies properly in non-combustible containers



For more information, please visit the OCFA website or call **714-573-6774** to schedule a wildfire home assessment.

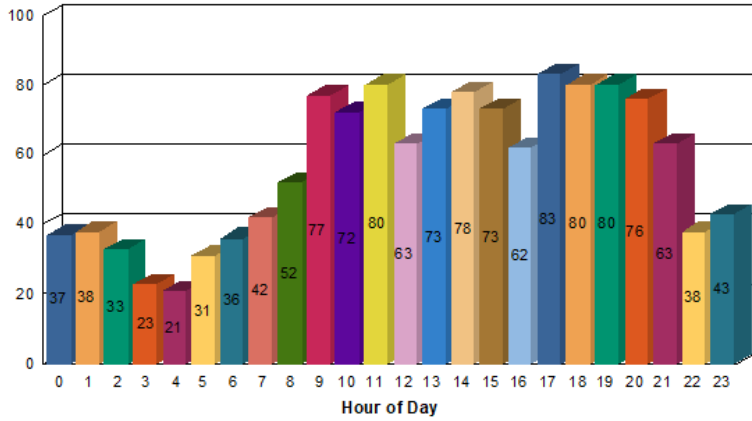
Incident Responses

| CALL TYPE | JAN | FEB | MAR | APR | MAY | JUN | JUL | AUG | SEP | OCT | NOV | DEC | Total | Monthly Average |
|---|------------|------------|------------|------------|------------|------------|------------|------------|------------|----------|----------|----------|-------------|-----------------|
| Medical Aid - Automatic Paramedic Alarm | 9 | 10 | 5 | 15 | 14 | 15 | 8 | 6 | 10 | | | | 92 | 10 |
| Medical Aid - Back to Bed/ Lift Assist | 9 | 7 | 9 | 7 | 6 | 10 | 6 | 9 | 9 | | | | 72 | 8 |
| Medical Aid - Cardiac (Chest Pain, Cardiac Arrest) | 31 | 29 | 31 | 25 | 25 | 24 | 25 | 26 | 23 | | | | 239 | 27 |
| Medical Aid - Stroke (Unconscious, Altered Mental State) | 15 | 23 | 30 | 21 | 29 | 23 | 29 | 26 | 30 | | | | 226 | 25 |
| Medical Aid - Diabetic Emergency | 2 | 1 | 5 | 3 | 2 | 2 | 5 | 5 | 1 | | | | 26 | 3 |
| Medical Aid - Fall | 64 | 52 | 47 | 54 | 41 | 52 | 41 | 58 | 73 | | | | 482 | 54 |
| Medical Aid - Illness (Sick Person, Injury, Illness) | 49 | 49 | 59 | 42 | 45 | 57 | 47 | 39 | 35 | | | | 422 | 47 |
| Medical Aid - Respiratory (Respiratory Arrest, Difficulty Breathing) | 25 | 20 | 19 | 14 | 12 | 22 | 13 | 21 | 24 | | | | 170 | 19 |
| Medical Aid - Abdominal Pain | 15 | 6 | 12 | 16 | 13 | 12 | 11 | 15 | 11 | | | | 111 | 12 |
| Medical Aid - Seizure | 10 | 7 | 11 | 10 | 5 | 5 | 9 | 13 | 7 | | | | 77 | 9 |
| Medical Aid - Misc. (Choking, Headache, Pregnancy, Bleeding, Assault, Burn, Intoxication) | 39 | 27 | 44 | 39 | 34 | 37 | 43 | 43 | 33 | | | | 339 | 38 |
| Medical Aid - Traffic Collision (Auto vs Auto, Auto vs Pedestrian) | 23 | 20 | 14 | 13 | 18 | 14 | 17 | 15 | 24 | | | | 158 | 18 |
| Fire - Structure | 1 | 4 | 3 | 0 | 2 | 5 | 3 | 3 | 1 | | | | 22 | 2 |
| Fire - Vehicle/ Dumpster | 4 | 5 | 3 | 1 | 1 | 4 | 3 | 1 | 2 | | | | 24 | 3 |
| Fire - Vegetation, Brush, Tree, Bush, Misc. | 2 | 3 | 3 | 2 | 0 | 7 | 6 | 7 | 4 | | | | 34 | 4 |
| Service Call - Misc. (Odor Check, Stuck Elevator, Automatic Fire Alarm) | 18 | 34 | 18 | 19 | 20 | 25 | 29 | 49 | 20 | | | | 232 | 26 |
| Incidents | 316 | 297 | 313 | 281 | 267 | 314 | 295 | 336 | 307 | 0 | 0 | 0 | 2726 | 303 |

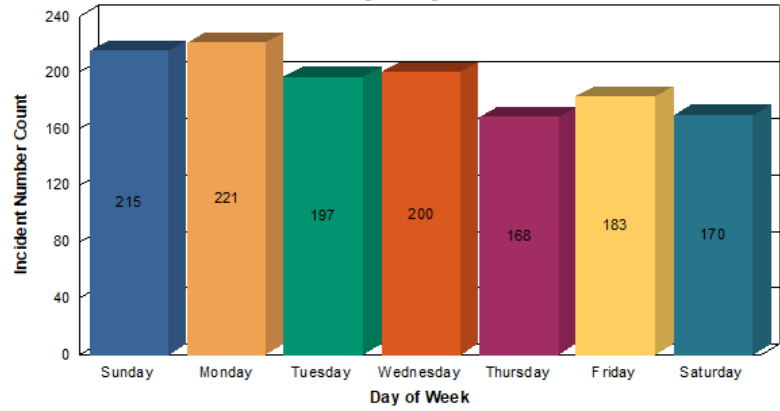
| CALL TYPE | JAN | FEB | MAR | APR | MAY | JUN | JUL | AUG | SEP | OCT | NOV | DEC | TOTAL | MO. AVG. |
|--------------|-----|-----|-----|-----|-----|-----|-----|-----|-----|-----|-----|-----|-------|----------|
| Medical Aids | 291 | 251 | 286 | 259 | 244 | 273 | 254 | 276 | 280 | | | | 2414 | 268 |
| Fires | 7 | 12 | 9 | 3 | 3 | 16 | 12 | 11 | 7 | | | | 80 | 9 |
| Misc | 18 | 34 | 18 | 19 | 20 | 25 | 29 | 49 | 20 | | | | 232 | 26 |

Incidents by Category

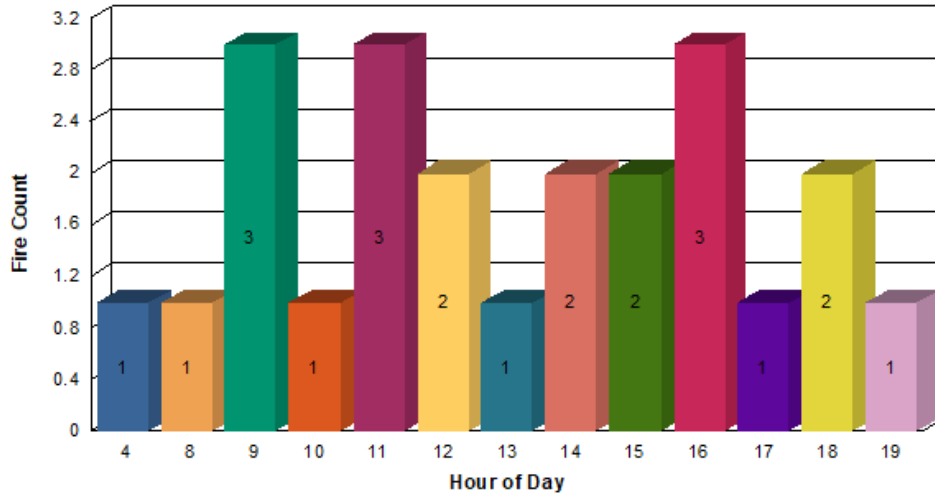
Incident Count by Hour of Day



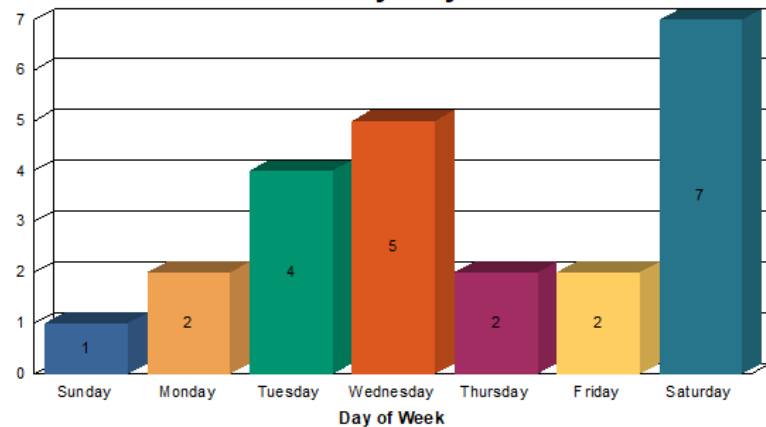
Incident By Day of Week



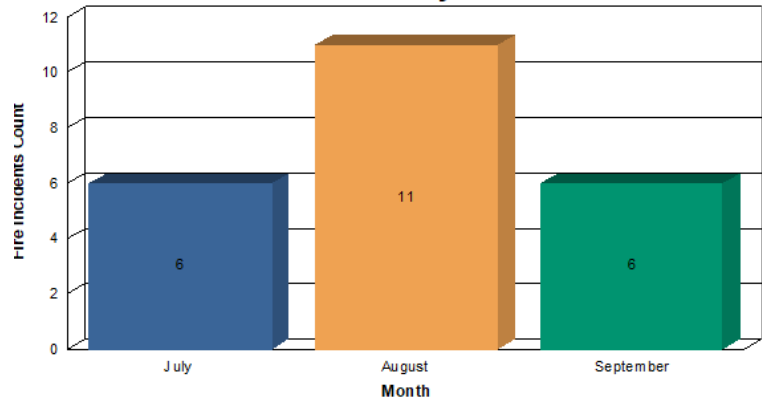
Fires by Hour of Day



Fire Incidents by Day of Week



Fire Incidents by Month



Firefighters in Action

September 11th – Incident # 103395

At 0927 hours, a commercial structure response was dispatched to 624 Camino De Los Mares, SCL. Engine 50 arrived on scene at 0931 hours with smoke showing from a one-story strip mall under construction. Engine 50 assumed the IC and requested a working response for a running attic fire. Battalion 6 arrived on scene and assumed the IC. At 0942 hours, a 2nd alarm was requested and at 0946 a primary all clear was declared. The fire was reported knocked down at 0954 hours and under control at 0958 hours.



July 31st – Incident # 085271

At 1246 hours, a medium watershed response was dispatched to a reported vegetation fire near the Bella Collina Golf Course, 200 Avenida La Pata, SCL. Truck 59 arrived on scene at 1250 hours and reported 1/10 of an acre brush fire on the fairways in medium fuels with a slow rate of spread. A type 1 engine strike team was requested to protect adjacent businesses. Battalion 6 arrived on scene, assumed the IC, and confirmed the fire was in SRA threat area. At 1312 hours, fixed wing aircraft was ordered but shortly released without making any drops. Helitanker 61 made 2 drops, HC4 made 9 drops and HC1 assisted with HLCO. The fire was reported contained at 1425 hours and contained to 3.86 acres of LRA with a SRA threat.



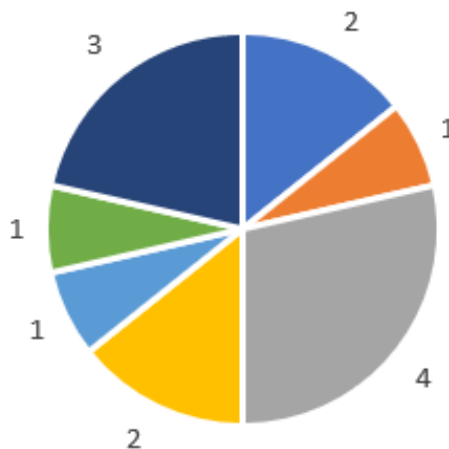
September 4th – Incident # 100281

At 0935 hours, a structure fire was dispatched to 64 Avenida Cristal, SCL. Truck 59 arrived on scene at 0941 hours with nothing showing from a one-story multi-family townhouse. After further investigation, T59 reported the residence was charged with smoke and assumed the IC. Battalion 6 arrived on scene assumed the IC and requested a working structure response for a fire in a garage. A primary all clear was declared at 1000 hours and a secondary at 1006 hours. The fire was reported under control at 1016 hours.

August 14th – Incident # 091058

At 1058 hours, a male was flying his drone in the wildland area at the dead end of Avenida Pico in San Clemente near the Ford Aerospace property when it crashed into some trees and caught fire. A Vegetation fire was dispatched into the MTZ with Camp Pendleton. HC1 arrived onscene as ground units were being let into the gate by security and advised a small spot and could handle with ground units. B6 assumed Talega IC and handled with one MCP engine and Engine 350. The PROS announcement was made and no aircraft were ordered per the IC.

July – Sept. Community Events



- Community Event
- School Program/Engine/Truck Visit
- Career Fair/Mentoring
- Station Tour
- Disaster/Emergency Prep Presentation
- Ride Along
- CERT/CEPA