

Your water meter is read every month to determine your water use and water bill plus you can also use the meter to check for water leaks.



How to Locate Your Water Meter

Water meters are typically located in a concrete box near the street adjacent to the curb. However it can also be located elsewhere around the perimeter of the property.

Note: Be very careful when removing your meter box lid and watch for spiders. Use two large screwdrivers – one to stick in the hole and one to pry up the outer edge. Lift the lid just enough to slide it over to the side with your foot. Replace the lid by sliding it back into place flush with the meter box to prevent a trip hazard. Be careful not to drop the lid on the meter!

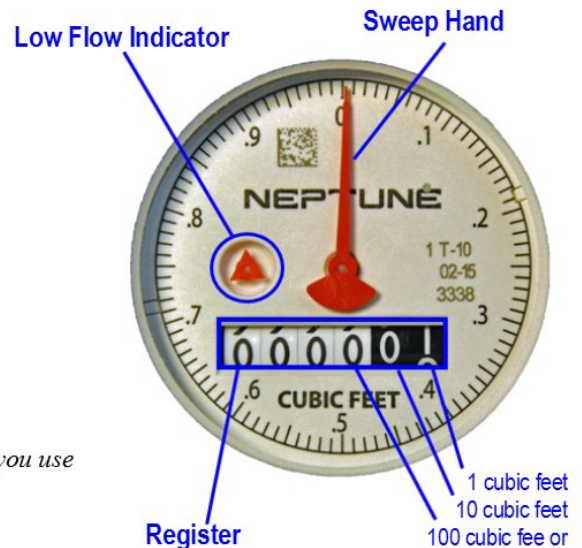
Anatomy of the Water Meter

Most meters look like the one pictured to the right.

Sweep Hand: the Sweep Hand will rotate when water passes through the meter. One full rotation of the dial equals 1 cubic foot of water or 7.48 gallons.

Low Flow Indicator: the Low Flow Indicator will rotate with very little water movement. Any water moving through the meter is detected so even small leaks will register.

Register: the Register records total water use in a similar way as the odometer in your car records miles driven. The Register records water use in cubic feet and displays as follows: The digits



San Clemente measures water by units for billing purposes: 1 unit of water billed = 100 cubic feet = 748 gallons.

How to Monitor Your Water Use

The following steps will show you how to determine how much water you use over a period of time.

1. Read the register and write it down completely including the date. After a period of days (we suggest 7 days) read the register again and write it down along with the date. You can also check the read on your last bill to determine how much has been used in the current billing period.
2. Subtract the first reading from the second reading. This is your water use in cubic feet during the period.
3. Multiply the water use by 7.48. This is your water use in gallons during the period.
4. Divide the water use in gallons by the number of days between readings. This is

How to Watch for Leaks

Turn off all water indoors and outdoors including sprinklers, ice maker, dishwashers, etc... If the low flow indicator moves, this may indicate a leak in an appliance or pipe. If the meter shows no obvious movement, note the reading on the meter and return in 4 hours to see if there is any change. Note: if you use water during that time, the meter reading will change. If you do notice movement, check all appliances, faucets, toilets and other water sources for drips or leaks. If you believe you have a leak you may want to call a plumber or fix the leak on your own.