



San
Clemente
THE SPANISH VILLAGE BY THE SEA



San Clemente

Toll Road Town Hall



San
Clemente
THE SPANISH VILLAGE BY THE SEA



Statutory Background

- 1988 Legislature authorizes Foothill/Eastern corridor:

“32 miles to the San Diego Freeway (I-5) below San Clemente in San Diego County.”



San
Clemente
THE SPANISH VILLAGE BY THE SEA



2016 Agreements

- Protected San Onofre and State Park
- But . . .

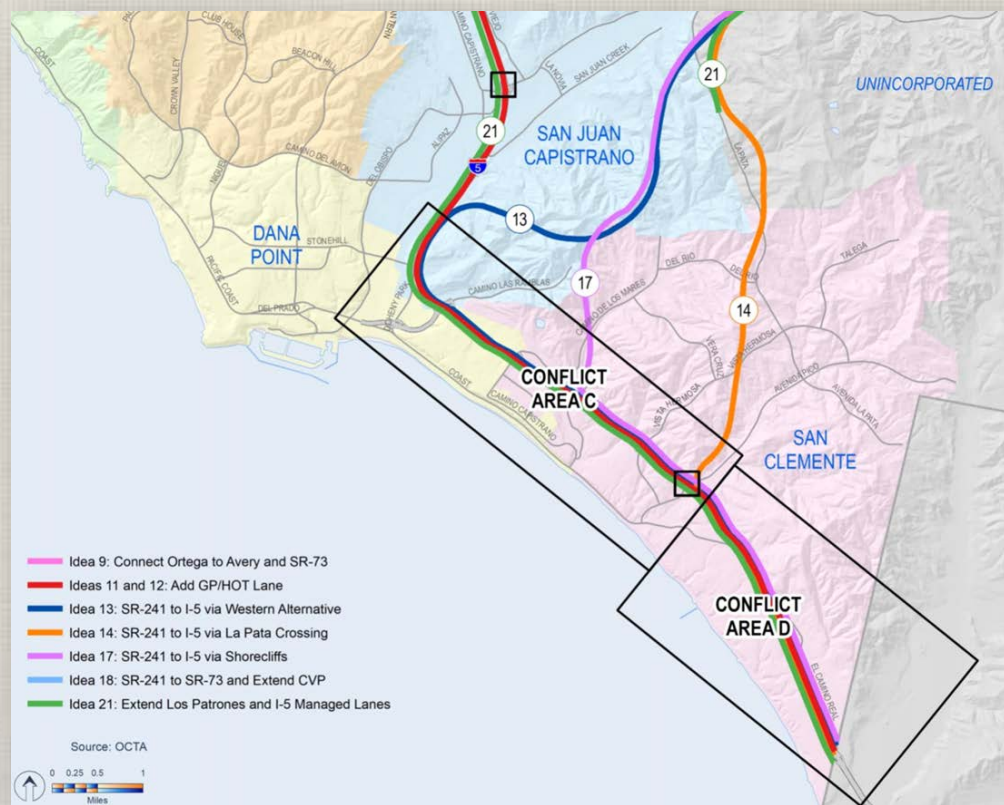




San Clemente
THE SPANISH VILLAGE BY THE SEA



Inevitable Outcome





San
Clemente
THE SPANISH VILLAGE BY THE SEA



City Plans





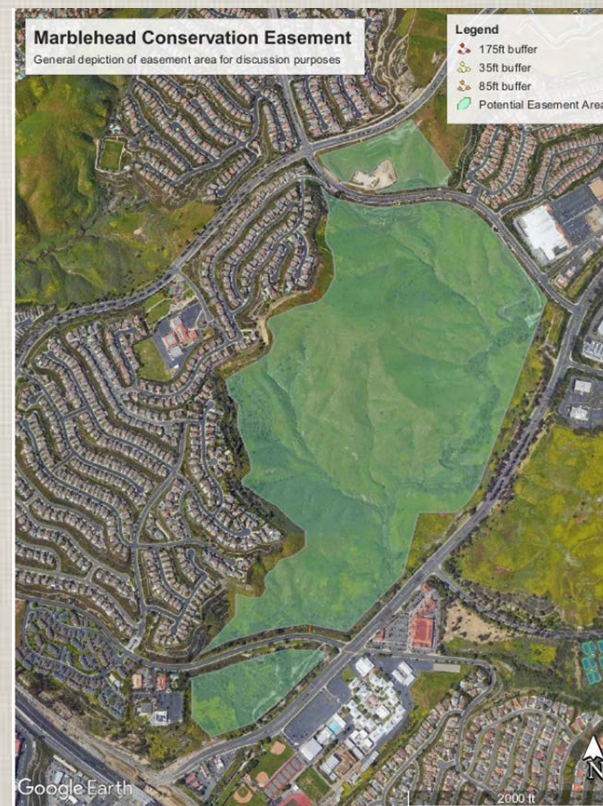
San
Clemente
THE SPANISH VILLAGE BY THE SEA



Marblehead Conservation Easement

Summer 2018

- 287 acre conveyance to City
- Compare Marblehead Coastal at 70 acres
- Market and publicize “bank”
- Prepare for recruitment of non-profit for sale, restoration, and maintenance





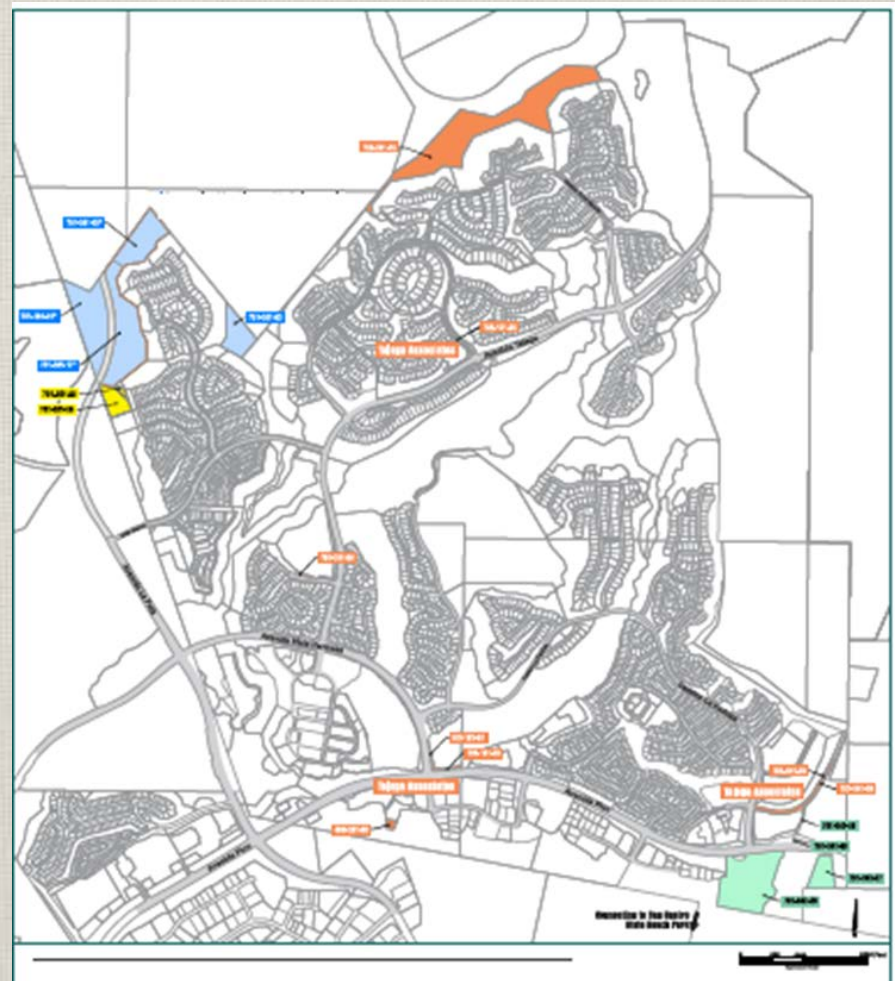
San
Clemente
THE SPANISH VILLAGE BY THE SEA



Talega

Spring 2019

- HOA and master developer conveyance in process
- Connection and realignment of master trails
- Market and publicize “bank”
- Prepare for recruitment of non-profit for sale, restoration, and maintenance
- Possible endowment





San
Clemente
THE SPANISH VILLAGE BY THE SEA



City's Lawsuit

- TCA /Caltrans lack authority to alter statutory route
- TCA can't close free County arterials once open (Los Patrones)
- Alternatives 14 and 17 conflict with regional and local general plans and transportation master plans
- TCA can't collect fees to build a freeway it cancelled
- "Traffic relief" is not an "accurate stable, and finite" project (*Washoe Meadows*)



San
Clemente
THE SPANISH VILLAGE BY THE SEA



City's Position

- Caltrans shouldn't redirect South County share of State taxes and Measure M funds
- These improvements won't be warranted for at least 50 years
- Alternative 22 does about 90% of the work at 10% of the cost
- Some ideas are too stupid to study