



AGENDA REPORT

SAN CLEMENTE CITY COUNCIL MEETING
Meeting Date: September 3, 2019

Agenda Item CeE

Approvals:

City Manager [Signature]

Dept. Head [Signature]

Attorney [Signature]

Finance [Signature]

Department: Beaches, Parks and Recreation
Prepared By: Samantha Wylie, Recreation Manager

Subject: *CONSIDERATION OF A PLAQUE RECOGNIZING THE REPLICA OF THE HISTORIC WEATHERVANE AT THE OLE HANSON BEACH CLUB.*

Fiscal Impact: None. All costs will be incurred by San Clemente Historical Society.

Summary: Staff and the Beaches, Parks and Recreation Commission recommend City Council approve the installation of a plaque recognizing the replica of the historic weathervane located at the Ole Hanson Beach Club on the east wall detailed in Attachment 2 as Option A in an 11"x14" size.

Background: During the remodel of the Ole Hanson Beach Club, the weathervane was not able to be replaced due to lack of funding. Upon learning this, the San Clemente Historical Society came forward and committed to donate a replica of the historical weathervane. Through a generous donation from the San Clemente Woman's Club, the Historical Society was able to produce a new weathervane.

The replica weathervane was unveiled at San Clemente Day on February 26, 2019.

At its July 9, 2019 meeting, the Beaches, Parks and Recreation Commission recommended discussions regarding the proposed plaque be continued to the next meeting to consider alternative designs.

At its August 13, 2019 meeting, the Beaches, Parks and Recreation Commission reviewed modified plaque designs, and recommended approval of an 11"x14" plaque in the location shown as Option A in Attachment 2.

Discussion: The plaque being requested recognizes the two major sponsors responsible for the replica weathervane – San Clemente Historical Society and San Clemente Woman's Club. Modified wording and two sizes and layout options for the plaque are shown in Attachment 1. There are two possible locations for the plaque to be installed. The location preferred by staff and the Historical Society is shown as Option A in Attachment 2.

The City will not be responsible for any ongoing maintenance or replacement of the plaque should it become damaged or need to be removed. If in the event the plaque requires removal, city staff will discuss possibilities of replacement with the Historical Society.

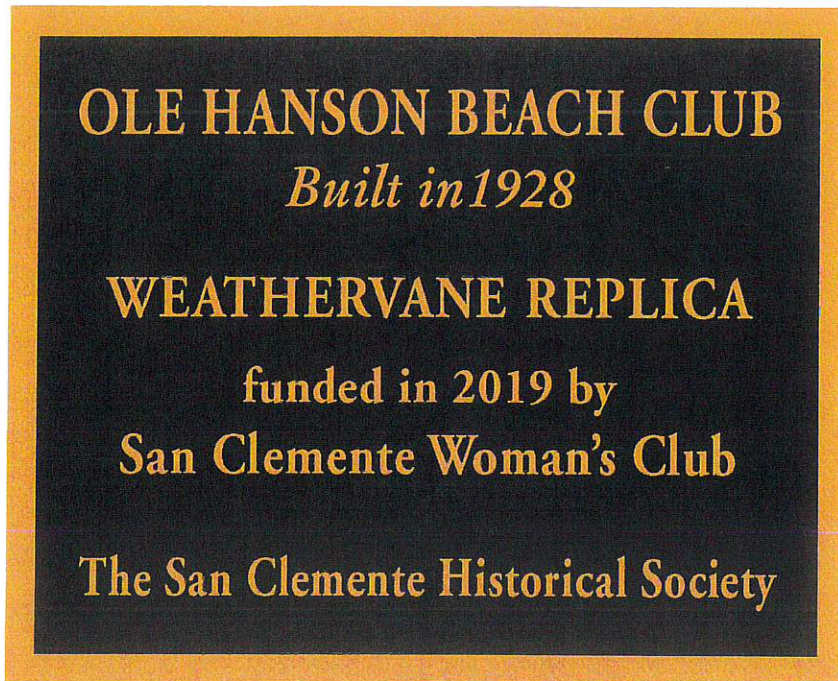
Recommended

Action: STAFF AND THE BEACHES, PARKS AND RECREATION COMMISSION RECOMMEND THAT the City Council approve the installation of a plaque recognizing the replica of the historic weathervane and its donors on the east wall of the Ole Hanson Beach Club near the stairs detailed in Attachment 2 as Option A in an 11"x14" size.

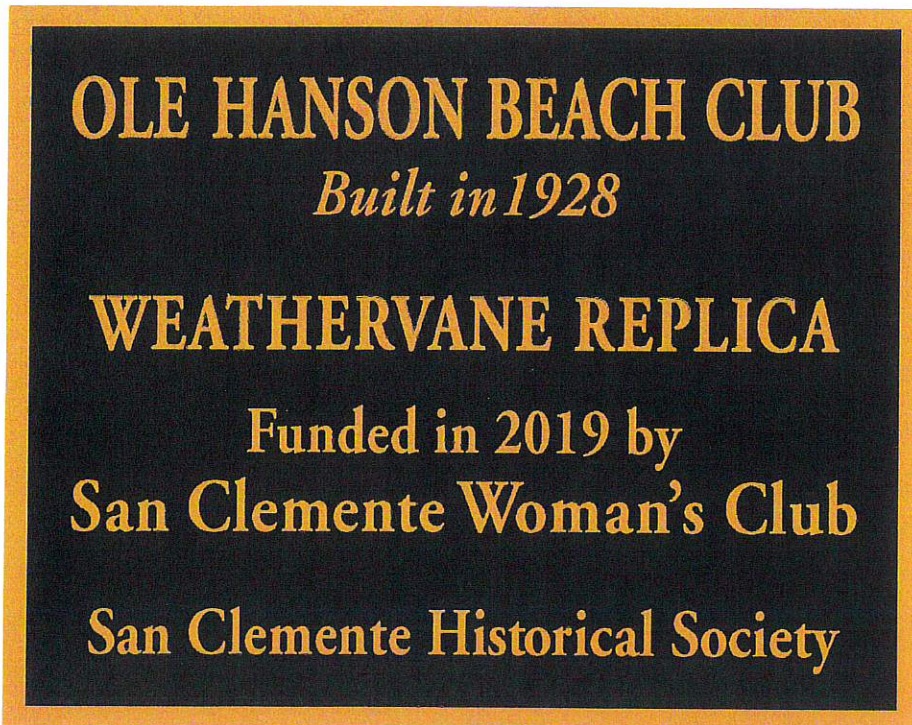
Attachments: 1.) Plaque Mock-Ups
2.) Plaque location options

Notification: San Clemente Historical Society
San Clemente Woman's Club

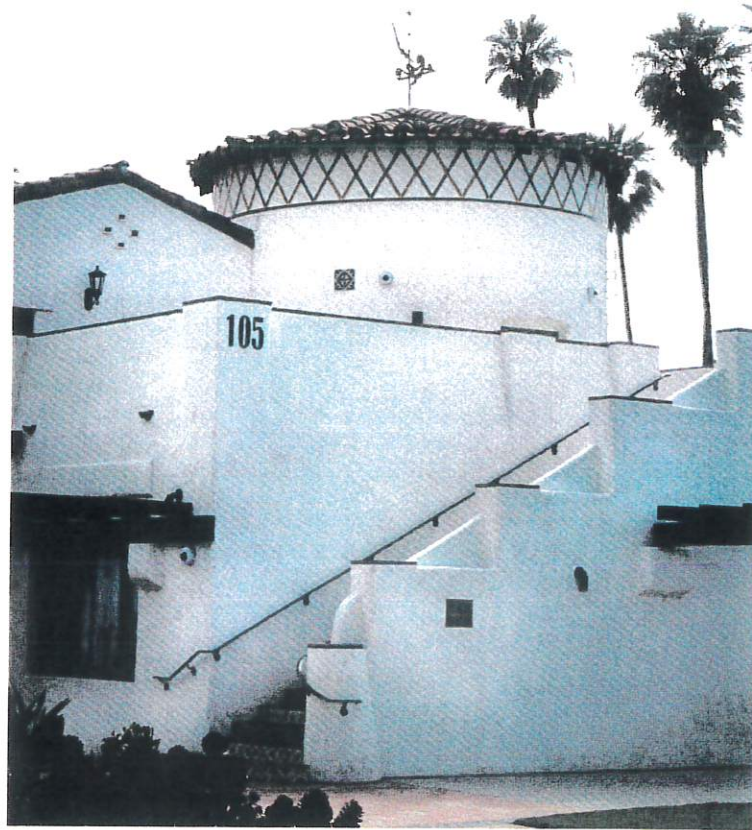
8" x 10"



11" x 14"



OPTION A
PLAQUE LOCATION
AT STAIRWAY



**OPTION B
PLAQUE LOCATION
UNDER LIGHT**

