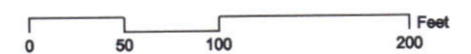
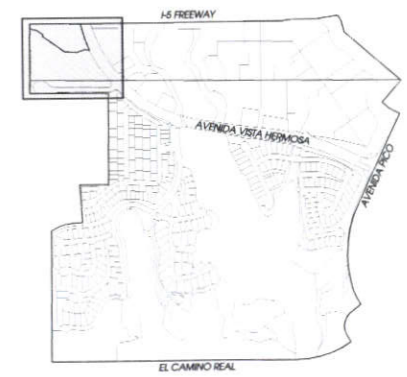


Marblehead Coastal

ACTIVE PARK DETAIL - SPORTS PARK

LEGEND:

1. AC PARKING LOT (85 LIGHTED SPACES, LIGHT POLE LOCATIONS TO BE PER CITY STANDARD AND DETERMINED AT FINAL DESIGN STAGE)
2. RESTROOM PER CITY STANDARD - LIGHTED
3. 29,300 S.F. ACTIVITY AREA, INCLUDES:
 - 10,000 S.F. UNIVERSAL PLAY AREA
 - 900 S.F. RESTROOM/ STORAGE AREA
 - SHADED INDIVIDUAL PICNIC AREAS
 - SHADED GROUP PICNIC AREA
 - GROVES OF SHADE TREES
 - DRINKING FOUNTAINS
 - BIKE RACKS
4. FULL COURT BASKETBALL - LIGHTED
5. 165' X 300' TURF SOCCER FIELD - LIGHTED (AYSO MINIMUM TOURNAMENT STANDARD 150'X300')
6. 8' CONCRETE SIDEWALK
7. 8' MEANDERING CONCRETE SIDEWALK
8. 6' CONCRETE SIDEWALK
9. 6' WIDTH CONCRETE STAIRWAY
10. 16' HIGH MESH FENCE
11. 6' HIGH MESH FENCE
12. 4' HIGH MESH FENCE
13. INDIVIDUAL PICNIC TABLE AND SHADE STRUCTURE PER CITY STANDARD
14. GROUP PICNIC TABLE AND SHADE STRUCTURE PER CITY STANDARD
15. LIGHTED ENTRY MONUMENT
17. ACCESSIBLE DRINKING FOUNTAIN/ WASTE RECEPTACLE
18. EXISTING UTILITY EASEMENT
19. NATIVE TREES FROM APPROVED PLANT PALETTE
20. MAINTENANCE VEHICLE ACCESS GATE
21. REMOVABLE BOLLARDS
23. 12" STABILIZED DECOMPOSED GRANITE ACCESS ROAD
24. SHRUBS AND GROUNDCOVER FROM APPROVED LIST
25. PLAY AREA 4,700 S.F.
26. SPORTS FIELD LIGHTING - APPROXIMATE LOCATION
27. SPORTS COURT LIGHTING - APPROXIMATE LOCATION



SHORECLIFFS MIDDLE SCHOOL

December 3, 2003

Exhibit 7

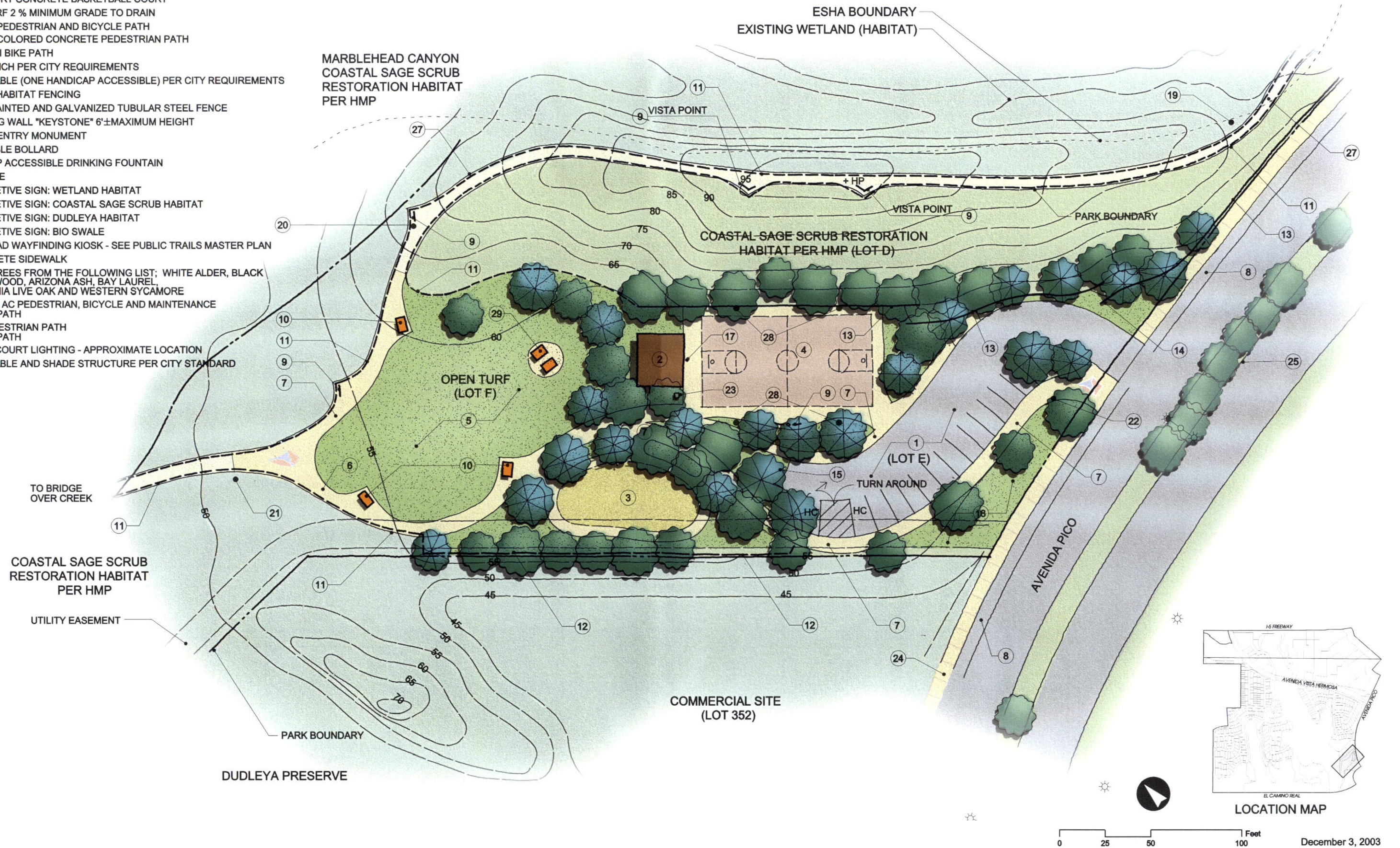
A:\100303\PLANNING\WST_1\REVISED\REVISED_12_25_03.dwg

Marblehead Coastal

ACTIVE PARK DETAIL - PICO PARK,

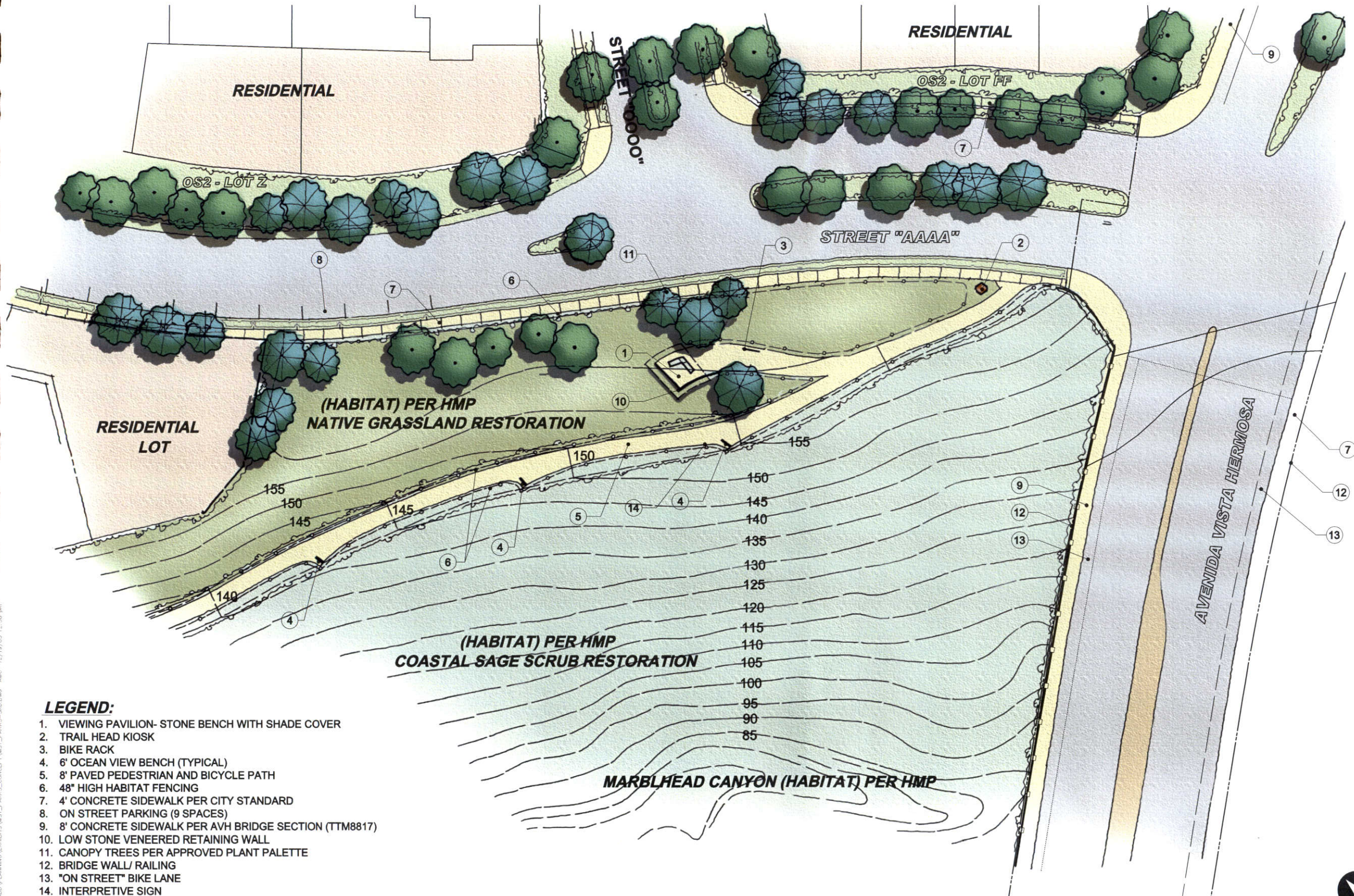
LEGEND:

1. 14 SPACE (2 HANDICAP) OCEAN VIEW AC PARKING LOT - LIGHTED
2. RESTROOM PER CITY STANDARD - LIGHTED
3. PLAY GROUND (AGES 4-8) CITY TO SELECT PLAY EQUIPMENT AND ADA SURFACING - LIGHTED
4. FULL-COURT CONCRETE BASKETBALL COURT
5. OPEN TURF 2 % MINIMUM GRADE TO DRAIN
6. 6' WIDTH PEDESTRIAN AND BICYCLE PATH
7. 4' WIDTH COLORED CONCRETE PEDESTRIAN PATH
8. 7' CLASS II BIKE PATH
9. PARK BENCH PER CITY REQUIREMENTS
10. PICNIC TABLE (ONE HANDICAP ACCESSIBLE) PER CITY REQUIREMENTS
11. 42" HIGH HABITAT FENCING
12. 5' HIGH PAINTED AND GALVANIZED TUBULAR STEEL FENCE
13. RETAINING WALL "KEYSTONE" 6'± MAXIMUM HEIGHT
14. LIGHTED ENTRY MONUMENT
15. REMOVABLE BOLLARD
17. HANDICAP ACCESSIBLE DRINKING FOUNTAIN
18. BIO SWALE
19. INTERPRETIVE SIGN: WETLAND HABITAT
20. INTERPRETIVE SIGN: COASTAL SAGE SCRUB HABITAT
21. INTERPRETIVE SIGN: DUDLEYA HABITAT
22. INTERPRETIVE SIGN: BIO SWALE
23. TRAIL HEAD WAYFINDING KIOSK - SEE PUBLIC TRAILS MASTER PLAN
24. 8' CONCRETE SIDEWALK
25. NATIVE TREES FROM THE FOLLOWING LIST: WHITE ALDER, BLACK COTTONWOOD, ARIZONA ASH, BAY LAUREL, CALIFORNIA LIVE OAK AND WESTERN SYCAMORE
26. 10' WIDTH AC PEDESTRIAN, BICYCLE AND MAINTENANCE VEHICLE PATH
27. 8' AC PEDESTRIAN PATH VEHICLE PATH
28. SPORTS COURT LIGHTING - APPROXIMATE LOCATION
29. PICNIC TABLE AND SHADE STRUCTURE PER CITY STANDARD

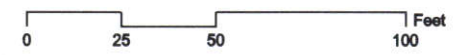


December 3, 2003

Exhibit 8



- LEGEND:**
1. VIEWING PAVILION- STONE BENCH WITH SHADE COVER
 2. TRAIL HEAD KIOSK
 3. BIKE RACK
 4. 6' OCEAN VIEW BENCH (TYPICAL)
 5. 8' PAVED PEDESTRIAN AND BICYCLE PATH
 6. 48" HIGH HABITAT FENCING
 7. 4' CONCRETE SIDEWALK PER CITY STANDARD
 8. ON STREET PARKING (9 SPACES)
 9. 8' CONCRETE SIDEWALK PER AVH BRIDGE SECTION (TTM8817)
 10. LOW STONE VENEERED RETAINING WALL
 11. CANOPY TREES PER APPROVED PLANT PALETTE
 12. BRIDGE WALL/ RAILING
 13. "ON STREET" BIKE LANE
 14. INTERPRETIVE SIGN



LOCATION MAP

