



DESIGNING
TOMORROW

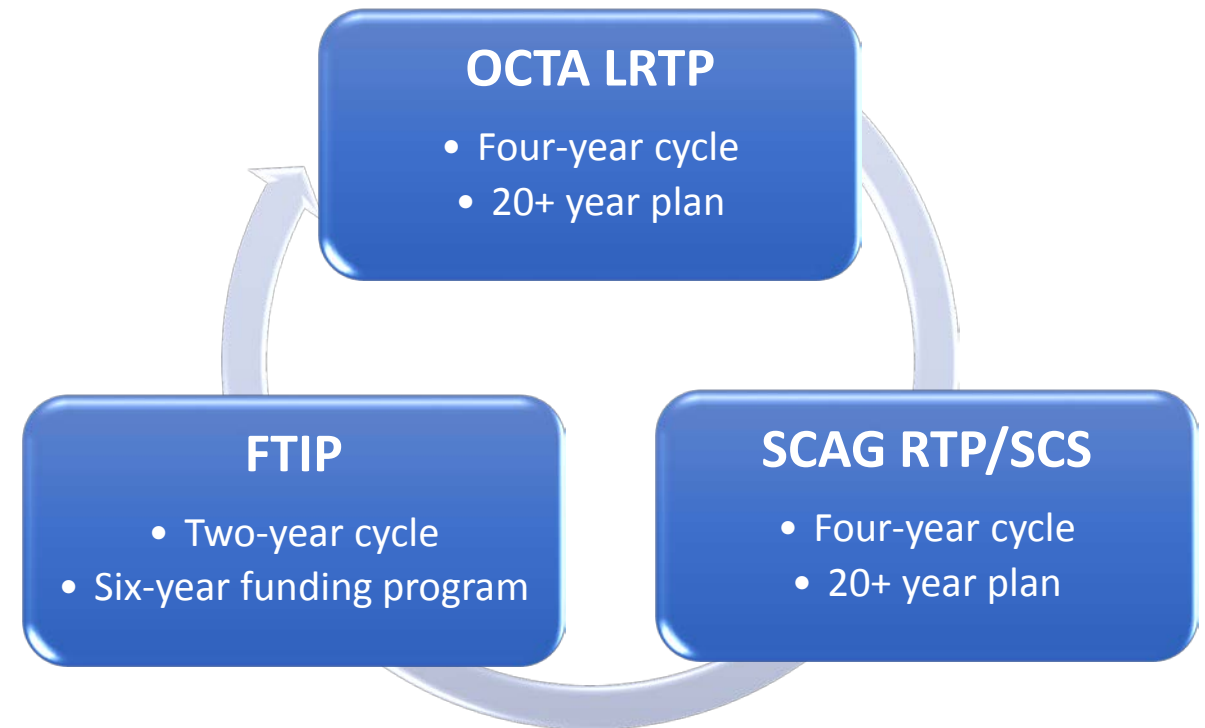
2018 LONG-RANGE TRANSPORTATION PLAN

January 15, 2019
San Clemente City Council



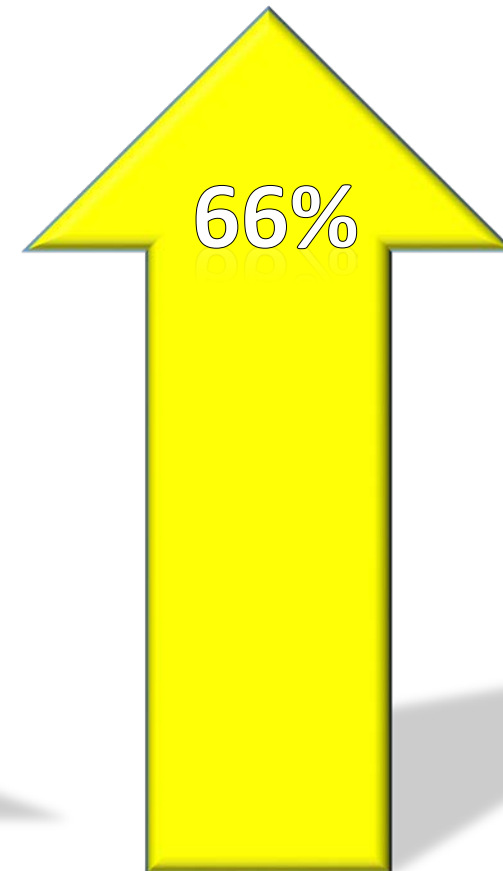
Long-Range Transportation Plan (LRTP)

- OCTA's LRTP serves to:
 - Evaluate current plans and policies
 - Identify new initiatives and priorities
 - Define projects in the Regional Transportation Plan
- Must consider:
 - Stakeholder input
 - Revenue forecasts
 - Current commitments
 - Population/Employment forecasts



Impacts of Growth

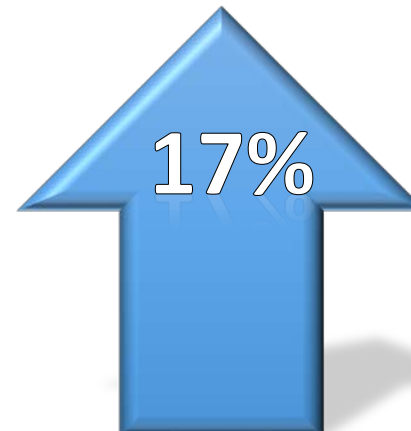
Metrics (daily)	2015 Base Year	2040 No Build	% Change
Total hours of delay from congestion	330,619	547,996	66%
Delay as a percent of travel time	15.2%	21.4%	41%
Transit trips	149,000	165,000	11%
Freeways – AM peak average speed (mph)	38.3	36.2	-5%
Arterials – AM peak average speed (mph)	25.7	24.3	-5%



Population



Housing



Employment

Congestion Delay

Highway Improvements

- 2015 lane miles:
1,698

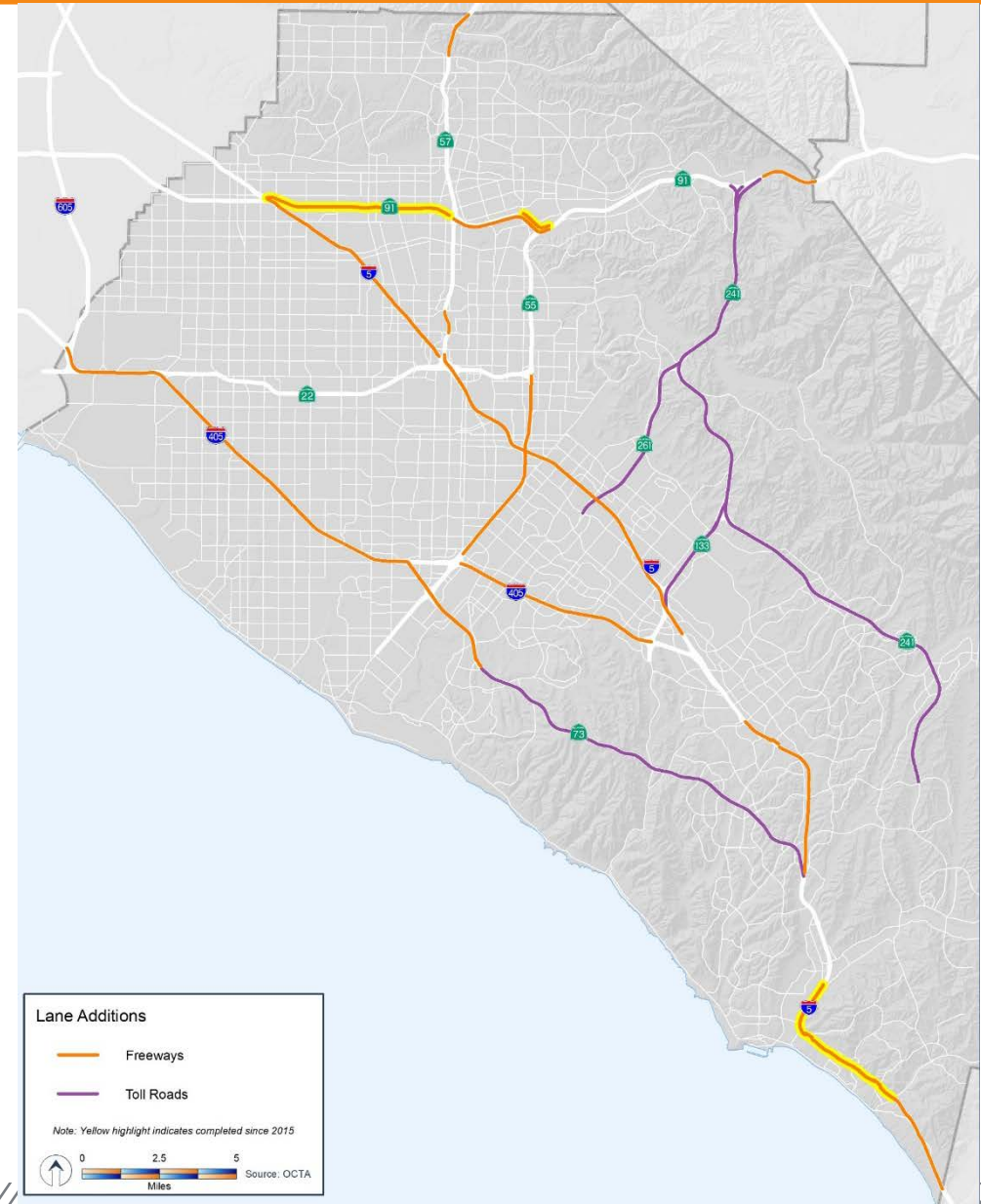
- Additional lane miles by 2040:

Route	Regular Lane Miles	Carpool Lane Miles	Express Toll Lane Miles
I-5	42	42	
I-405	48		32
SR-55	14	11	
SR-57	2		
SR-73		8	
SR-91	15		
Total	121	61	32

I-5 – Interstate 5
 I-405 – Interstate 405
 SR-55 – State Route 55
 SR-57 – State Route 57
 SR-73 – State Route 73
 SR-91 – State Route 91

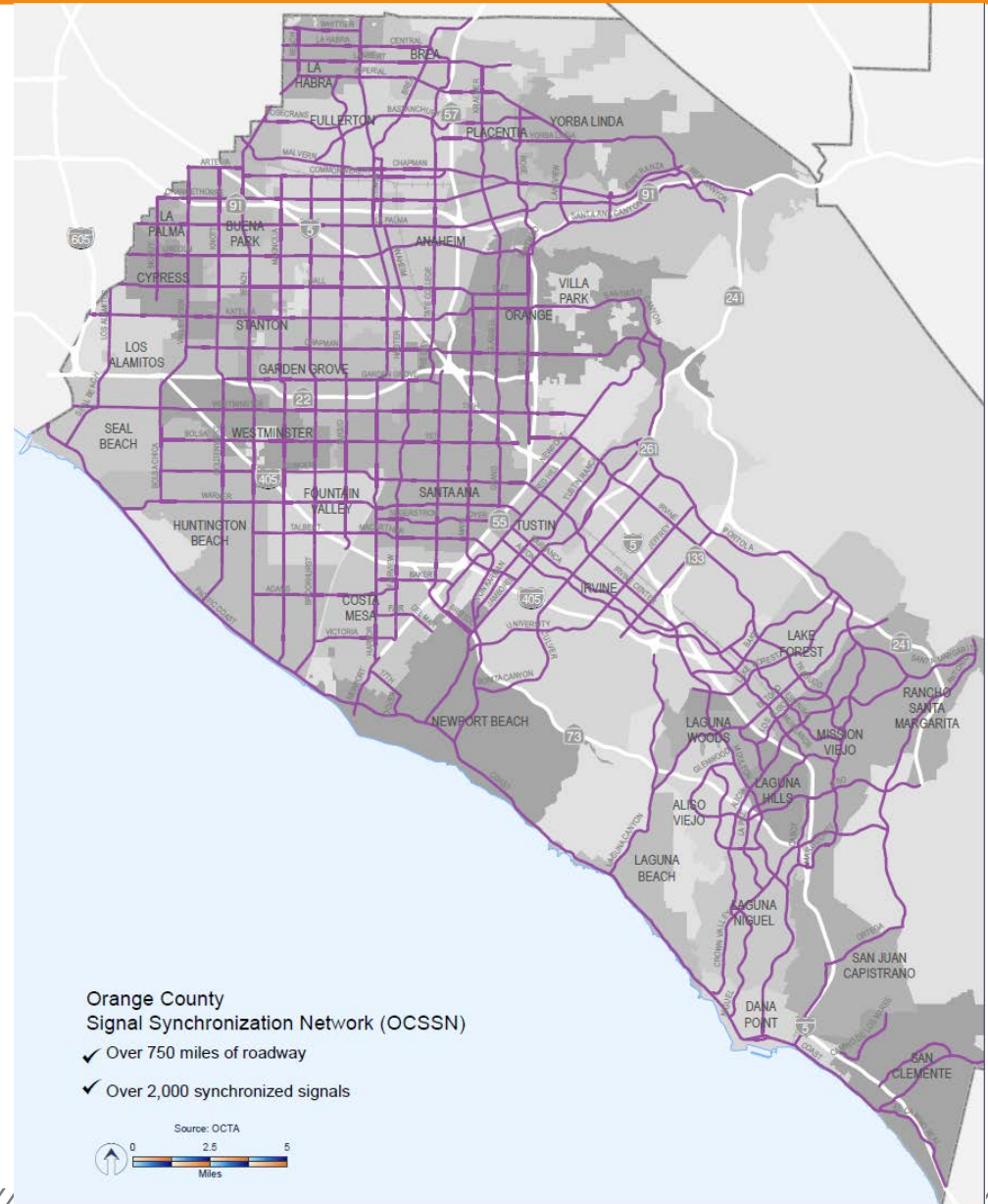
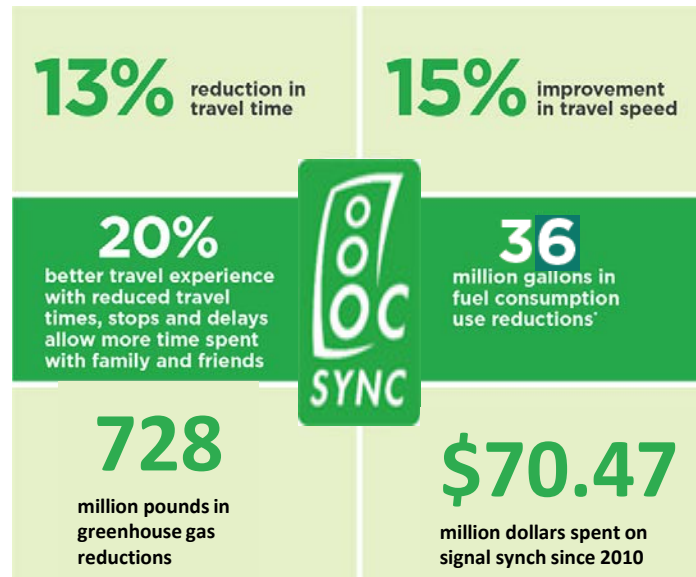
The Toll Roads lane additions

up to **150** lane miles on existing corridors



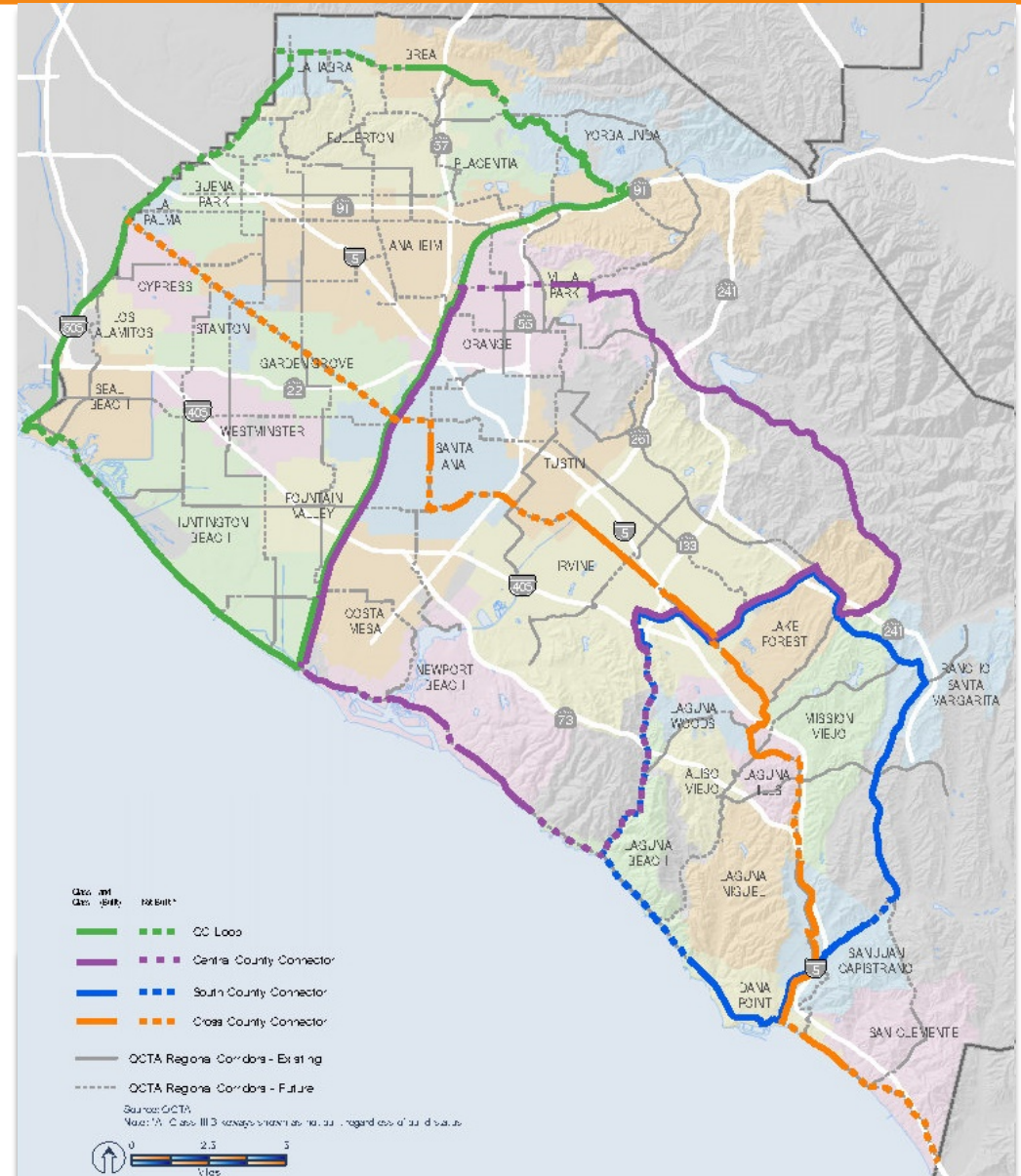
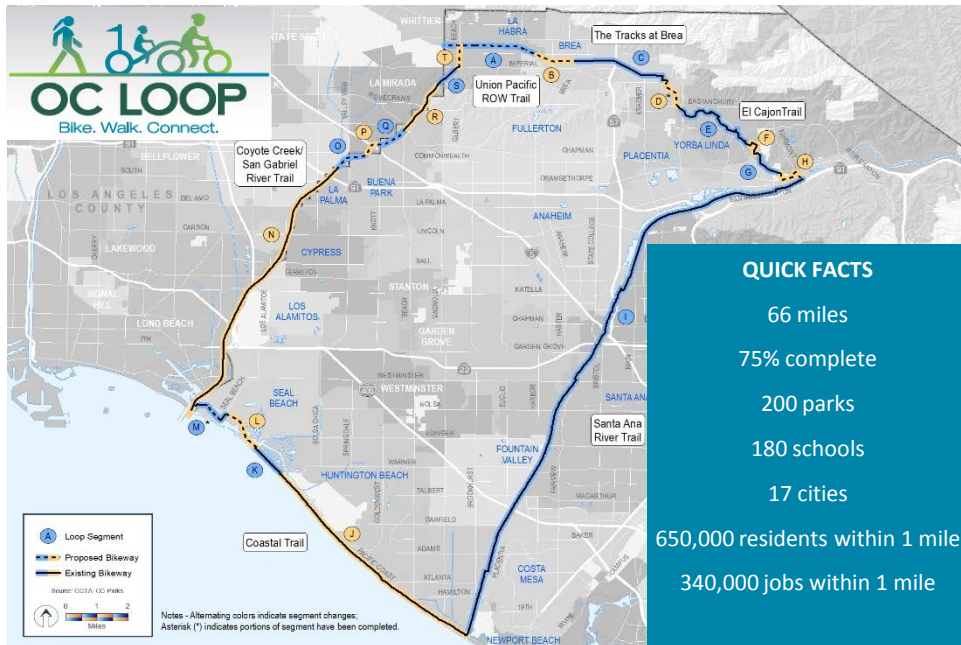
Street Improvements

- 2015 lane miles:
6,377
- Additional lane miles by 2040:
651
- Synchronized intersections:
2,000+



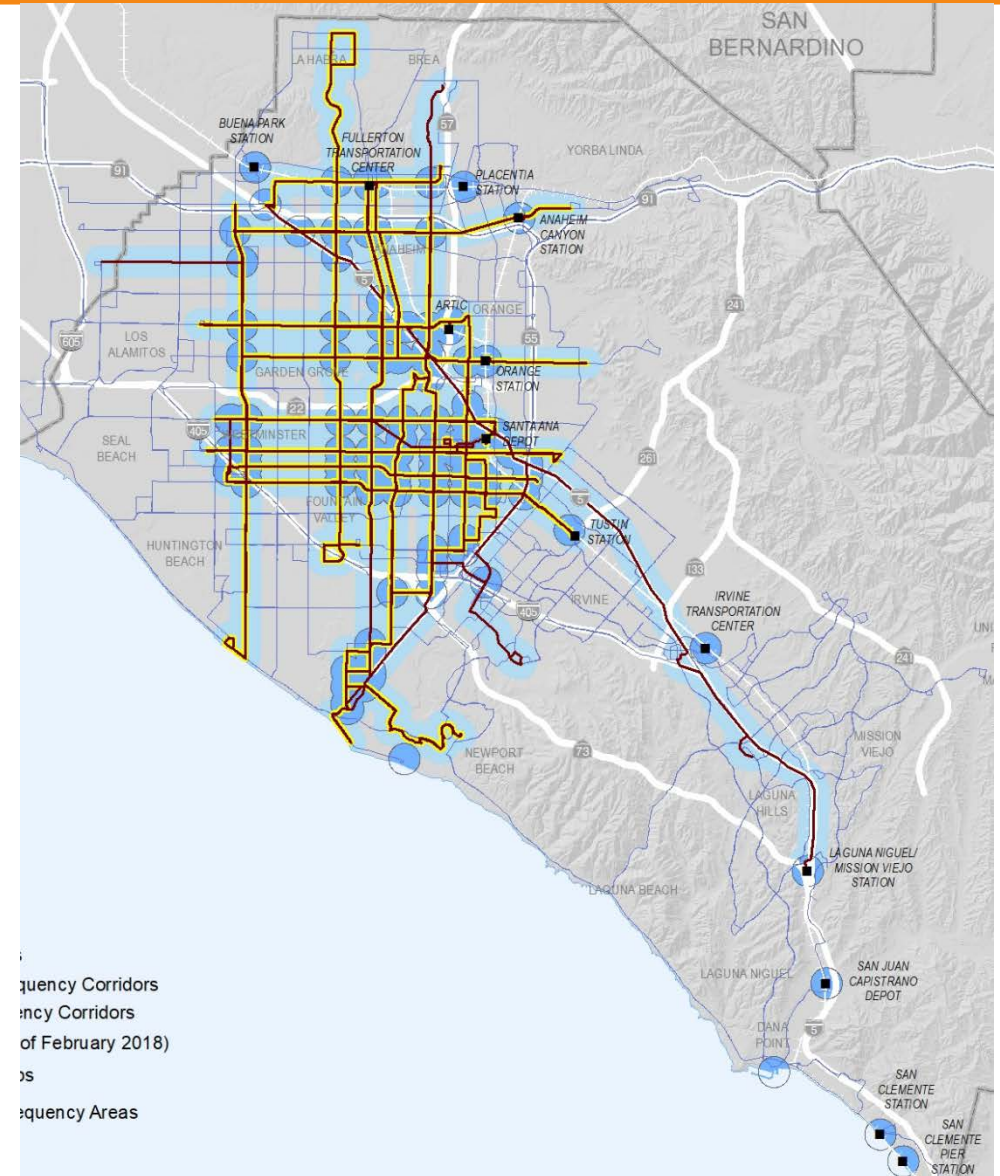
Active Transportation Improvements

- 2015 miles of bikeways:
1,130
- Additional miles of bikeways by 2040:
+655



Transit Improvements

- 2015 hours of service:
1.6 million
- Additional service hours by 2040:
+480,000



Source: OCTA

Metrolink Improvements

- 2015 daily trains:

<u>OC Line</u>	<u>IE/OC Line</u>	<u>91 Line</u>
29	16	9

- Additional daily trains by 2040:

<u>OC Line</u>	<u>IE/OC Line</u>	<u>91 Line</u>
+6	+12	+14

 **TIER 4 LOCOMOTIVE** | CLEAN POWER

METROLINK PROUDLY INTRODUCES THE NEW, INDUSTRY-LEADING TIER 4 LOCOMOTIVE.



IE – Inland Empire



Source: OCTA

Trend 2040 - Results

Metrics (daily)	2040 No Build	Trend 2040*	% Change
Total hours of delay from congestion	547,996	378,138	-31% ✓
Delay as a percent of travel time	21.4%	15.4%	-28% ✓
Transit trips	165,000	174,000	5% ✓
Freeways - AM peak average speed (mph)	36.2	39.7	10% ✓
Arterials - AM peak average speed (mph)	24.3	25.9	7% ✓

Trend 2040 nearly maintains 2015 conditions

- Despite over 1.7 million daily trips added

*Trend 2040 assumes managed lanes are operated as tolled express lanes by 2040

Short-Term Action Plan

Orange County Planning Activities

- Local Agency Coordination
- Study Mobility Needs
- Plan Improvements

Regional Planning Activities

- Regional Agency Coordination
 - Regional Transportation Plans
- Air Quality

Emerging Issues

- Technologies
- Regulations
- Funding Opportunities

Outreach & Education

- Transit Use
- Trip Planning
- Active Transportation Safety

Next Steps

Participate in development of the 2020 RTP/SCS

Proceed with:

- Project development & implementation
- Short-Term Action Plan elements
 - Continue study of carpool lanes to San Diego
 - Begin a South Orange County Multimodal Study

2020 – Begin development of 2022 LRTP



DESIGNING
TOMORROW

2018 LONG-RANGE TRANSPORTATION PLAN

Thank You

Public Outreach – Phase One

- 11,000+ public survey responses
- Engagement with OCTA stakeholders:
 - Citizens Advisory Committee
 - Special Needs Advisory Committee
 - Diverse Community Leaders Committee
 - Teen Council
- Elected Officials Workshops
- Transportation Planning Directors Forums
- OCTA Board/Committee presentations
- OCTA Board Workshop: Managed Lanes
- Thought-leader interviews
- Focus group interviews
- Engagement with partner agencies and interest groups

Keep OC Moving

- Congestion relief on streets and freeways

Expand Transit Options

- Growing interest in expanded transit options

Be Innovative

- Monitor and engage in development of technology

Public Outreach – Phase Two

- Public survey (1,230 respondents)
- Quantitative survey (2,525 respondents)
- Telephone town hall (956 callers participated for at least five minutes)
- Comment cards/online commenting (110 comments received)
- Comment letters (eight letters received)
- Public open house
- Social media campaign
- Pop-up events (seven events)
- Engagement video
- Art and photo contest

Keep OC Moving

- Relieve congestion on streets and freeways

Expand Transit Options

- Explore opportunities for new transit services

No “Silver Bullet”

- Invest in improvements across all modes to relieve congestion

Managed Lane Performance

Trend 2040 Managed Lane Scenarios			
Metrics	HOV 2+	HOV 3+	Express Toll
Meets federal performance standard	✗	✓	✓
Managed lane capacity used during morning drive time	70%	30%	60%
Findings Summary	Does not meet federal standard due to overuse.	Meets federal standard, but underused.	Meets federal standard and doubles use compared to HOV 3+

