



# Memorandum Engineering Division

January 16, 2019

**To:** Planning Commission  
**From:** Nestor Mangohig, Senior Traffic Engineer  
**Subject:** **Animal Shelter Overnight Parking Restriction**  
**Copies:** Thomas Frank, Transportation Engineering Manager  
 Tom Bonigut, Public Works Director/City Engineer  
 Werner W. Hartman, Police Administrative Sergeant

---

**ISSUE:**

**Should the Planning Commission forward a recommendation to the City Council to restrict overnight parking in the Animal Shelter parking lot located at 221 Avenida Fabricante?**

**BACKGROUND:**

City Public Works staff has received requests from Animal Shelter management to implement overnight parking restrictions in the city-owned Animal Shelter parking lot. The Animal Shelter is located at 221 Avenida Fabricante. Access to the parking lot is gained via a single driveway on Avenida Fabricante.

City staff has observed overnight vehicles parked in the Animal Shelter parking lot, affecting availability for Animal Shelter staff and patrons. In order to facilitate use of the parking lot for its staff and patrons, an overnight parking restriction from 8 p.m. to 6 a.m. is proposed within the city-owned parking lot.

A feedback form was distributed to parcels/businesses within 300 feet of the Animal Shelter. The City has received no feedback indicating opposition to the proposed parking restriction.

Staff discussed the potential parking restriction with Police Services and they are supportive of the following staff recommendation. It should be noted that the recommended restricted parking hours were developed based on feedback from Animal Shelter management.

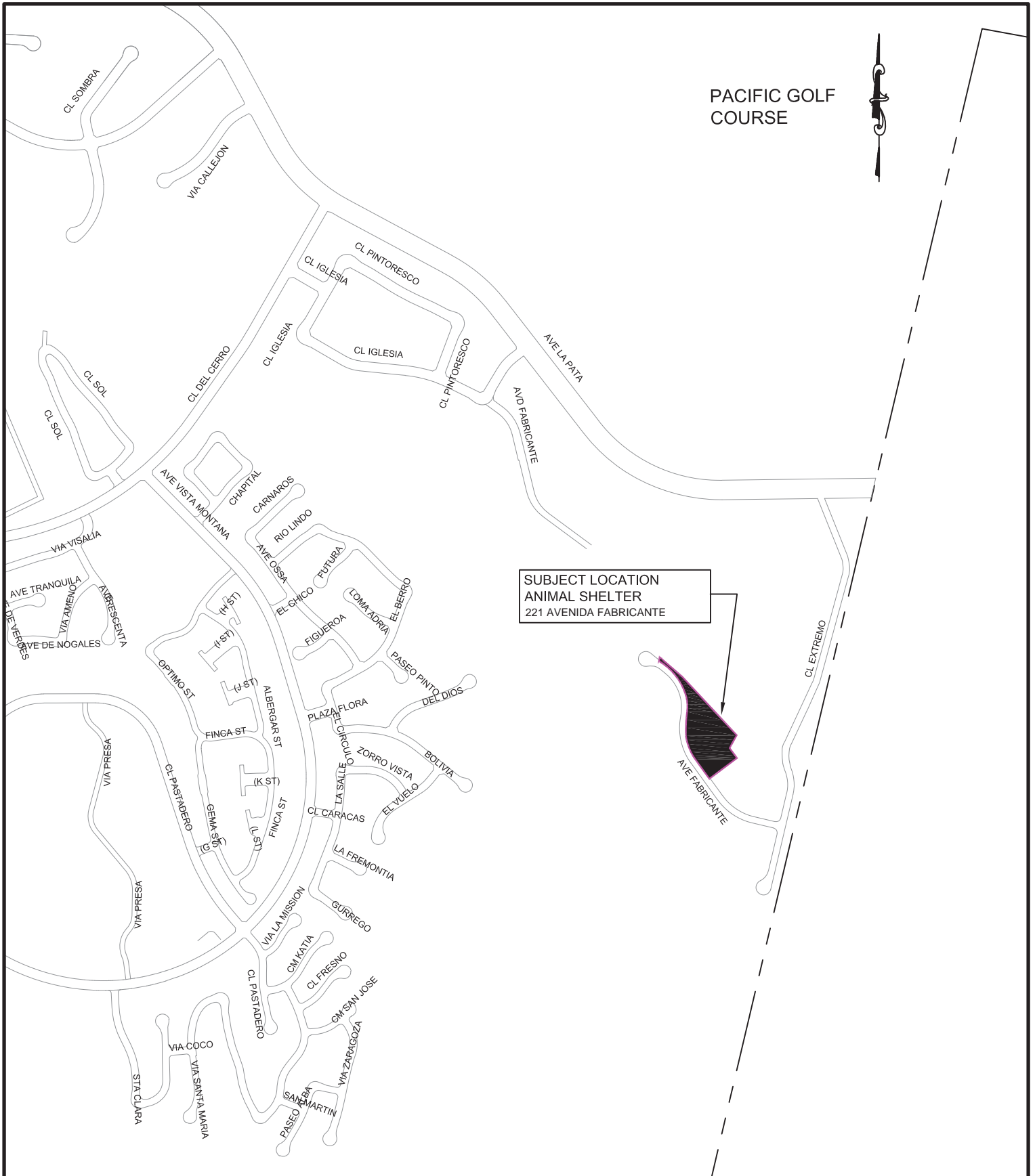
Notices were distributed to parcels/businesses within 300 feet of the Animal Shelter to inform the residents that the subject would be considered at this meeting, and the City Council meeting on February 5, 2019.

**RECOMMENDATION:**

STAFF RECOMMENDS THAT Planning Commission forward to the City Council a recommendation to approve a parking restriction between the hours of 8:00 p.m. and 6:00 a.m. in the city-owned parking lot serving the Animal Shelter located at 221 Avenida Fabricante.

Attachments: 1. Location Map

\\cf\data\cd\engineering\secure\admin\planning commission\2019\01-16-19\animal shelter overnight parking restriction\animal shelter overnight parking restriction.docx



s:\graphics\graphics\_cd\autocad engr drawings\traffic\location maps.dwg 12.12.2018



**CITY OF SAN CLEMENTE**  
 910 CL Negocio, Suite 100  
 San CLEMENTE, CA 92673  
 Tel (949) 361-6100  
 Fax (949) 361-8316

### LOCATION MAP

**PROPOSED PARKING RESTRICTION**  
 Animal Shelter at 221 Ave. Fabricante