

This document has been developed from input provided as part of an ongoing collaborative exchange with South County elected officials and from two public forums conducted by TCA to openly discuss and solicit public input regarding mobility issues in South Orange County. As a result of this input, and adhering to Caltrans' procedures, TCA is preparing a Project Initiation Document to preliminarily evaluate these ideas, which will lead into the formal environmental review process.

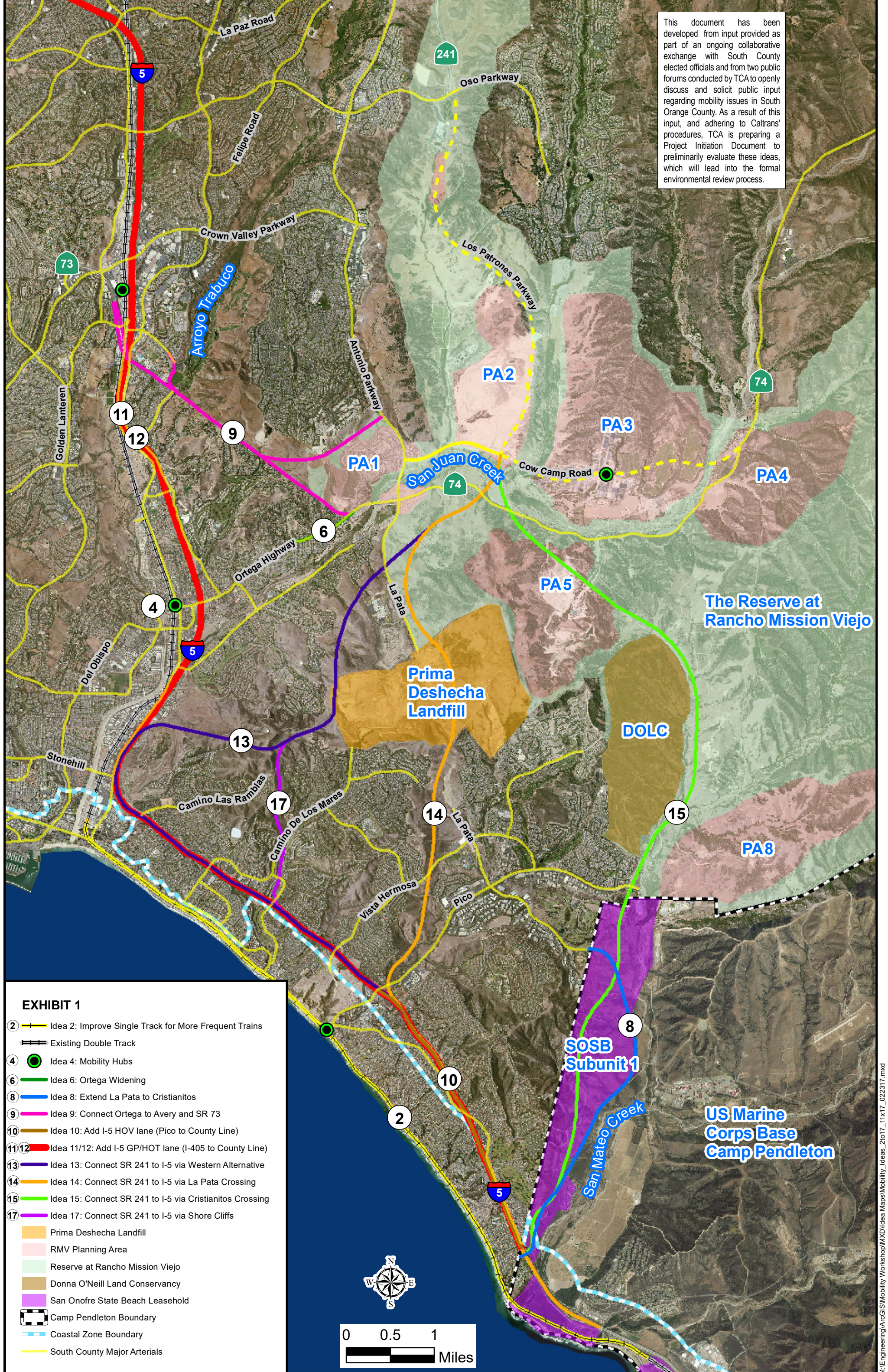


EXHIBIT 1

- ② Idea 2: Improve Single Track for More Frequent Trains
- Existing Double Track
- ④ Idea 4: Mobility Hubs
- ⑥ Idea 6: Ortega Widening
- ⑧ Idea 8: Extend La Pata to Cristianitos
- ⑨ Idea 9: Connect Ortega to Avery and SR 73
- ⑩ Idea 10: Add I-5 HOV lane (Pico to County Line)
- ⑪⑫ Idea 11/12: Add I-5 GP/HOT lane (I-405 to County Line)
- ⑬ Idea 13: Connect SR 241 to I-5 via Western Alternative
- ⑭ Idea 14: Connect SR 241 to I-5 via La Pata Crossing
- ⑮ Idea 15: Connect SR 241 to I-5 via Cristianitos Crossing
- ⑰ Idea 17: Connect SR 241 to I-5 via Shore Cliffs
- Prima Deshecha Landfill
- RMV Planning Area
- Reserve at Rancho Mission Viejo
- Donna O'Neill Land Conservancy
- San Onofre State Beach Leasehold
- Camp Pendleton Boundary
- Coastal Zone Boundary
- South County Major Arterials

