

Tenant ID

	Sign Area	Linear Foot	Ht Above Ground	@ 13 lumens/ SF*
1	130.5 SF	42'-6"	34'-0"	1697
2	72 SF	28'-9"	32'-0"	936
3	75 SF	28'-9"	32'-0"	975
4	88.5 SF	31'-9"	22'-0"	1150
5	90 SF	25'-0"	32'-0"	1170
6	81 SF	18'-10"	25'-0"	1053
7	81 SF	18'-10"	25'-0"	1053
8	36 SF	16'-9"	28'-0"	468
9	67 SF	25'-3"	25'-0"	887
10	80.25 SF	27'-0"	20'-0"	1043
11	108 SF	36'-0"	20'-0"	1404
12	54 SF	25'-0"	26'-0"	702
13	100.5 SF	40'-0"	20'-0"	1306
14	120 SF	23'-0"	22'-0"	1560
15	91.5 SF	36'-6"	24'-0"	1190
16	58.5 SF	27'-4"	30'-0"	761
17	130.5 SF	43'-6"	20'-0"	1697
18	77.625 SF	31'-0"	30'-0"	1009
19	90 SF	36'-0"	20'-0"	1170
20	63 SF	29'-0"	22'-0"	819
21	31.5 SF	14'-6"	25'-0"	410
22	31.5 SF	14'-6"	25'-0"	410
23	112.5 SF	37'-6"	20'-0"	1463
24	64 SF	14'-3"	17'-0"	832
25	64 SF	14'-3"	22'-0"	832
26	64 SF	14'-3"	17'-0"	832
27	64 SF	14'-3"	22'-0"	832

Outlet Tenant(27) - Signs 1-23 wall mounted on outlet buildings, signs 24-27 on tower
- Signs 1-16 phase I, signs 17-23 phase II ALL FREEWAY ORIENTED

Outlet ID

	Sign Area	Linear Foot	Ht Above Ground	@ 13 lumens/ SF*
1	200 SF	19'-11"	30'-0"	2600
2	200 SF	19'-11"	20'-0"	2600
3	100 SF	14'-3"	25'-0"	1300
4	100 SF	14'-3"	25'-0"	1300

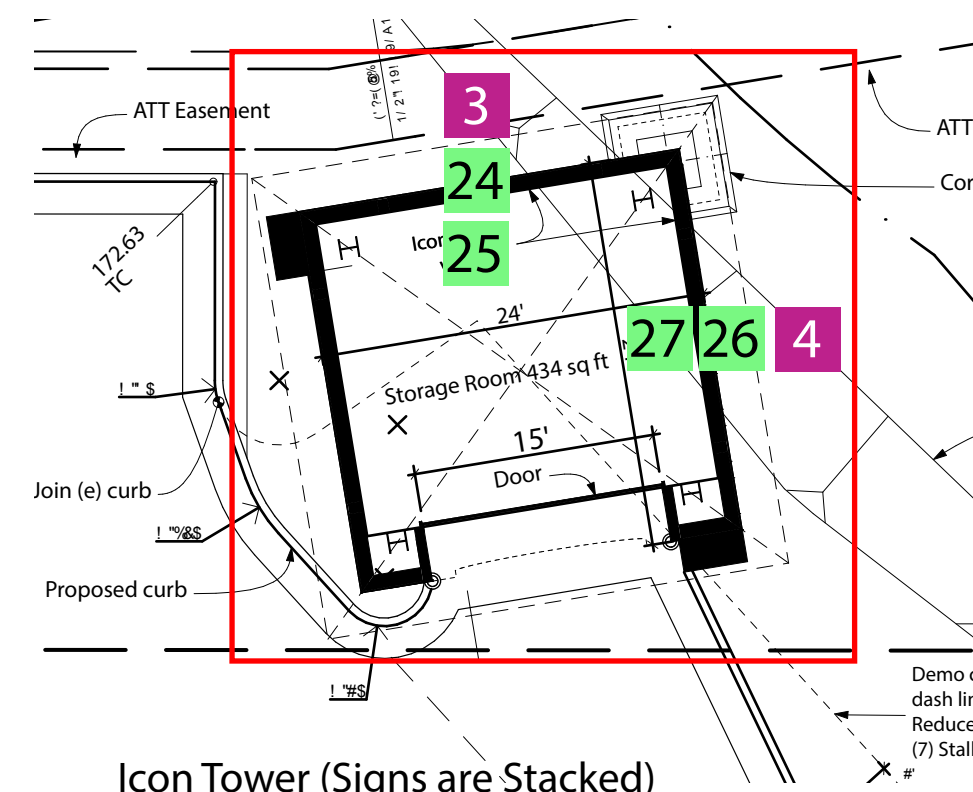
Outlet ID (5) - Signs 1-3 wall mounted on outlet buildings & signs 4-5 on tower
- Signs 1&2 phase I, signs 3-5 phase II ALL FREEWAY ORIENTED

Hotel ID

	Sign Area	Linear Foot	Ht Above Ground	@ 13 lumens/ SF*
1	64 SF	20'-0"	30'-0"	832
2	30 SF	10'-0"	25'-0"	390 [Conference Center ID]
3	30 SF	10'-0"	16'-0"	390 [Conference Center ID]
4	64 SF	20'-0"	30'-0"	832
8	64 SF	20'-0"	30'-0"	832

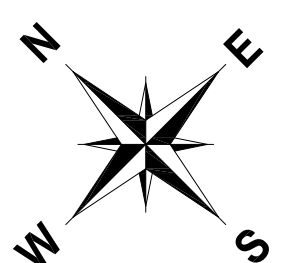
Hotel Signs (8) - Signs 1,4,8 Primary ID.
- Sign1 & 2 freeway oriented and signs 3, 4 & 8 are freeway visible.

*Approximate illumination figures. See Multimedia LED, Performance Test Of Outlets at San Clemente Halo Lit Signage (Nov. 11, 2016).



Icon Tower (Signs are Stacked)
Enlarged Detail

SCALE: 1" = 140'-0"



Overall Site Plan