



# AGENDA REPORT

SAN CLEMENTE CITY COUNCIL MEETING  
Meeting Date: March 21, 2017

Agenda Item 9A  
Approvals:  
City Manager [Signature]  
Dept. Head [Signature]  
Attorney \_\_\_\_\_  
Finance \_\_\_\_\_

**Department:** Public Works / Engineering  
**Prepared By:** Tom Bonigut, Deputy Public Works Director

**Subject:** *LETTER CONCERNING THE POTENTIAL 241 TOLL ROAD EXTENSION OPTION NUMBER 9.*

**Fiscal Impact:** None.

**Summary:** This action is to seek City Council direction to formally request inclusion of a specific potential toll road extension alternative in the upcoming study and environmental review processes as discussed below.

**Discussion:** The Transportation Corridor Agency (TCA) is considering alternatives to address mobility in South Orange County, including various potential routes to extend the 241 toll road from the existing southern terminus at Oso Parkway to a direct connection with Interstate 5. At its September 6, 2016 meeting, the City Council received an update on the process and potential conceptual alternatives developed up to that time. The attached map shows potential alternative toll road extension alignments. Based on input during a public workshop TCA subsequently developed Alternative #13, which involves extending the toll road through the open space between San Capistrano and San Clemente to connect to Interstate 5 just south of San Juan Creek Road. TCA also more recently developed Alternative #17 which begins the same as Alternative #13, but then heads south through open space in San Clemente and through the Camino Los Mares/Avenida Vaquero areas to connect to Interstate 5 where the freeway crosses Avenida Vaquero.

Alternative #9 is shown on the attached map and involves extending the toll road to connect to I-5 about where the 73 toll road connects to I-5. This Alternative #9 was included in presentations to the public, but may no longer be included in the suite of alternatives that will be analyzed in detail in the upcoming planned Project Study and Environmental Impact Report processes. Alternative #9 has already had some conceptual traffic modeling evaluation completed and was shown to provide regional mobility benefits. Since this alternative has the potential to provide a viable connection of the toll road to I-5, the City Council may wish to urge the appropriate transportation agencies, including OCTA, TCA and Caltrans, to include this alternative in the upcoming planned Project Study and Environmental Impact Report processes.

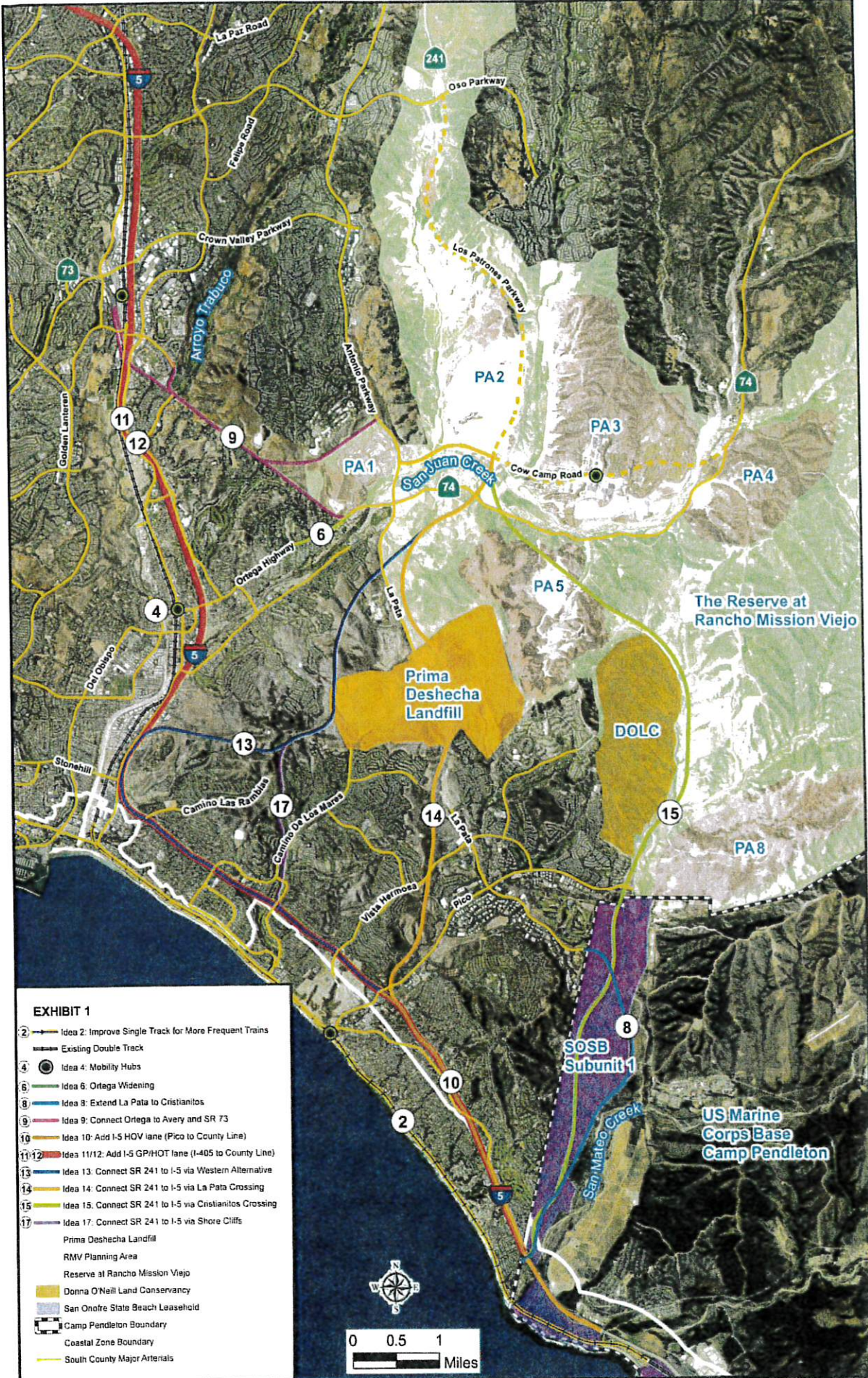
**Recommended Action:** STAFF RECOMMENDS THAT the City Council direct staff to prepare and submit a letter to the appropriate transportation agencies and regional stakeholders requesting that potential 241 Toll Road Extension Option Number 9 (or closely related variants) be

included and evaluated in the upcoming Project Study Report and Environmental Impact Statement/Report Processes.

**Attachment:** Map of potential toll road extension alternatives.

**Notification:** None.

S:\cd\Engineering\secure\Admin\2017 Admins\3-21-17\03-21-17-9r.docx



**EXHIBIT 1**

- 2 Idea 2: Improve Single Track for More Frequent Trains
- Existing Double Track
- 4 Idea 4: Mobility Hubs
- 6 Idea 6: Ortega Widening
- 8 Idea 8: Extend La Pata to Cristianitos
- 9 Idea 9: Connect Ortega to Avery and SR 73
- 10 Idea 10: Add I-5 HOV lane (Pico to County Line)
- 11/12 Idea 11/12: Add I-5 GPHOT lane (I-405 to County Line)
- 13 Idea 13: Connect SR 241 to I-5 via Western Alternative
- 14 Idea 14: Connect SR 241 to I-5 via La Pata Crossing
- 15 Idea 15: Connect SR 241 to I-5 via Cristianitos Crossing
- 17 Idea 17: Connect SR 241 to I-5 via Shore Cliffs
- Prima Deshecha Landfill
- RMV Planning Area
- Reserve at Rancho Mission Viejo
- Donna O'Neill Land Conservancy
- San Onofre State Beach Leasehold
- Camp Pendleton Boundary
- Coastal Zone Boundary
- South County Major Arterials



