



AGENDA

SAN CLEMENTE GOLF COURSE COMMITTEE

THURSDAY, JANUARY 5, 2017. 6:00PM

CITY HALL, 100 Avenida Presidio
Council Chambers

****PLEASE NOTE TIME AND LOCATION****

FOR ADDRESSING THE COMMITTEE: If you wish to address the Committee, please identify yourself to the Secretary and you will be permitted to speak at the appropriate time.

1. ROLL CALL

2. APPROVAL OF MINUTES

Approval of minutes of the Regular Meeting held November 3, 2016

3. PUBLIC INPUT

Members of the audience who wish to address the Committee on matters of public interest pertaining to the City that are not on the agenda may stand, state their name and the City in which they reside, and make their presentation.

Please limit presentations to three minutes. Since the Committee cannot discuss or take action on matters not on the agenda, items of concern which are not urgent in nature can be resolved more expeditiously by completing and submitting a written request to the Beaches, Parks & Recreation Department or Golf Division.

For matters on the agenda, public comments will be received at the time the Committee considers the agenda item.

4. OLD BUSINESS

Updates on continuing business items: (A) forward tees project, (B) #17 green project, (C) nursery green project, and; (D) general tee improvements.

5. NEW BUSINESS

(A) Reconsideration of the project for #16 tee and associated amenities

(B) Discussion of emergency work to repair path near #16 tee

(C) Commendation for outgoing Committee Member Kellerman

6. COMMUNICATIONS

Presentation of any comments from public to staff since last meeting

7. ITEMS FROM STAFF

Monthly Report

8. ITEMS FROM COMMITTEE MEMBERS

9. ADJOURNMENT

Adjourn to the next Regular meeting March 2, 2017.

Pursuant to the Americans with Disabilities Act, persons with a disability who require a disability related modification or accommodation in order to participate in a meeting, including auxiliary aids or services, may request such modification or accommodation from the City Clerk at (949) 361-8200. Notification 48 hours prior to the meeting will enable the City to make reasonable arrangements to assure accessibility to the meeting. Written material distributed to the Golf Course Committee after the original agenda packet was distributed is available for public inspection in the Golf Division office, located at 402 Calle Bahia, during normal business hours.



CITY OF SAN CLEMENTE

MINUTES OF THE REGULAR GOLF COURSE COMMITTEE MEETING

THURSDAY, NOVEMBER 3, 2016, 6:00 P.M.

A regular meeting of the Golf Course Committee of the City of San Clemente was called to order on Thursday, November 3, 2016, at 5:58 p.m., at City Hall, Council Chambers, 100 Avenida Presidio, San Clemente, CA 92672.

1. ROLL CALL

Committee members present: Nick Azzollini, Rick Divel, Kevin Kellerman, Darlyn Regan, Parker Steel

Committee members absent: Tim Kiernan, Dick Veale

Staff present: Gus Nelson, Golf Course Manager
Maile Stivers, Administrative Assistant

2. APPROVAL OF MINUTES

A. Approval of Minutes of the Regular Meeting held September 1, 2016

MOTION BY COMMITTEE MEMBER KELLERMAN, SECOND BY COMMITTEE MEMBER AZZOLLINI, AND CARRIED 5-0, to approve the minutes of the regular meeting held September 1, 2016 with an amendment to item 3 Public Input removing Head Golf Professional, Vinnie Poncino.

B. Approval of Minutes of the Joint Council, Commissions and Committees Meeting held August 30, 2016

MOTION BY COMMITTEE MEMBER STEEL, SECOND BY COMMITTEE MEMBER REGAN, AND CARRIED 5-0, to approve the minutes of the Joint Council, Commissions and Committees meeting held August 30, 2016.

3. PUBLIC INPUT

None.

4. OLD BUSINESS

A. Courtesy Placard

Golf Manager Nelson summarized contents of the administrative report regarding the status of the courtesy placard and responded to Committee Member inquiries.

B. Forward Tees

Golf Manager Nelson summarized the contents of the administrative report regarding the forward tees project, and responded to Committee inquiries, adding the project start date is anticipated in November.

C. #17 Green Expansion Project

Golf Manager Nelson summarized contents of the administrative report regarding the #17 green expansion project and responded to Committee Member inquiries.

D. Nursery Green Project

Golf Manager Nelson summarized contents of the administrative report regarding the nursery green project near the #18 tee and responded to Committee Member inquiries.

E. Putting Green Project

Golf Manager Nelson summarized contents of the administrative report regarding the potential putting green improvement and responded to Committee Member inquiries.

F. General Tee Improvements

Golf Manager Nelson summarized contents of the administrative report regarding general tee improvements and responded to Committee Member inquiries, adding the par 3 tees will be prioritized along with #1 and #12.

G. Employee Recruitment

Golf Manager Nelson summarized the summarized contents of the administrative report regarding recruitment of a Course Lead Worker, Jordan Gilmore, who began in early October.

5. NEW BUSINESS

A. Reconsideration of the project for #16 Tee and Associated Amenities

Golf Manager Nelson summarized the contents of the administrative report and responded to Committee Member inquiries.

Consensus was reached to bring the item back at the next meeting with more detail for consideration.

6. COMMUNICATIONS

Golf Manager Nelson summarized communications from the public detailed in the administrative report and responded to Committee Member inquiries.

7. ITEMS FROM STAFF

Golf Manager Nelson summarized his monthly report and discussed financial and maintenance activity at the course since the last meeting.

8. ITEMS FROM COMMITTEE MEMBERS

Committee Members discussed course operations and maintenance activities including resident card tracking systems, course damage from raccoons, mud spots on the course, and bare spots from tree removals.

9. ADJOURNMENT

MOTION BY COMMITTEE MEMBER AZZOLLINI, SECONDED BY COMMITTEE MEMBER REGAN, AND CARRIED 5-0, to adjourn at 7:08 p.m. to the next regular meeting to be held on Thursday, January 5, 2017 at 6:00 p.m. at City Hall located at 100 Avenida Presidio, San Clemente, CA in City Council Chambers.

Rick Divel, Golf Course Committee Chair

Date: _____

Gus Nelson, Golf Course Manager

Date: _____



AGENDA REPORT

SAN CLEMENTE GOLF COMMITTEE

Meeting Date: January 5, 2016

Department: Beaches, Parks & Recreation
Prepared By: Gus Nelson, Golf Course Manager

Subject: *Agenda item 4A: Forward Tees*

Discussion: Forward tee project is a top priority and work commenced after winter overseeding on some behind the scenes items like re-aligning sprinklers and re-programming irrigation for several of the tee areas. We will begin mowing out new tees on the flat areas next week then moving on to those that require grading.

Subject: *Agenda item 4B: #17 green expansion project*

Discussion: The expansion of the #17 green has been completed. It will take a few weeks of mowing, topdressing and fine tuning before the green putts like the rest of the green.

Subject: *Agenda Item 4C: Nursery green*

Discussion: The nursery green project has been delayed a bit due to more rain than was anticipated. This is still a top priority and should be completed by spring. The project is necessitated by the ongoing infestation of greens 2 and 11 with swine cress, a weed which is difficult to control with chemicals and more suited to 'cupping' out.

Subject: *Agenda Item 4D: General tee improvements*

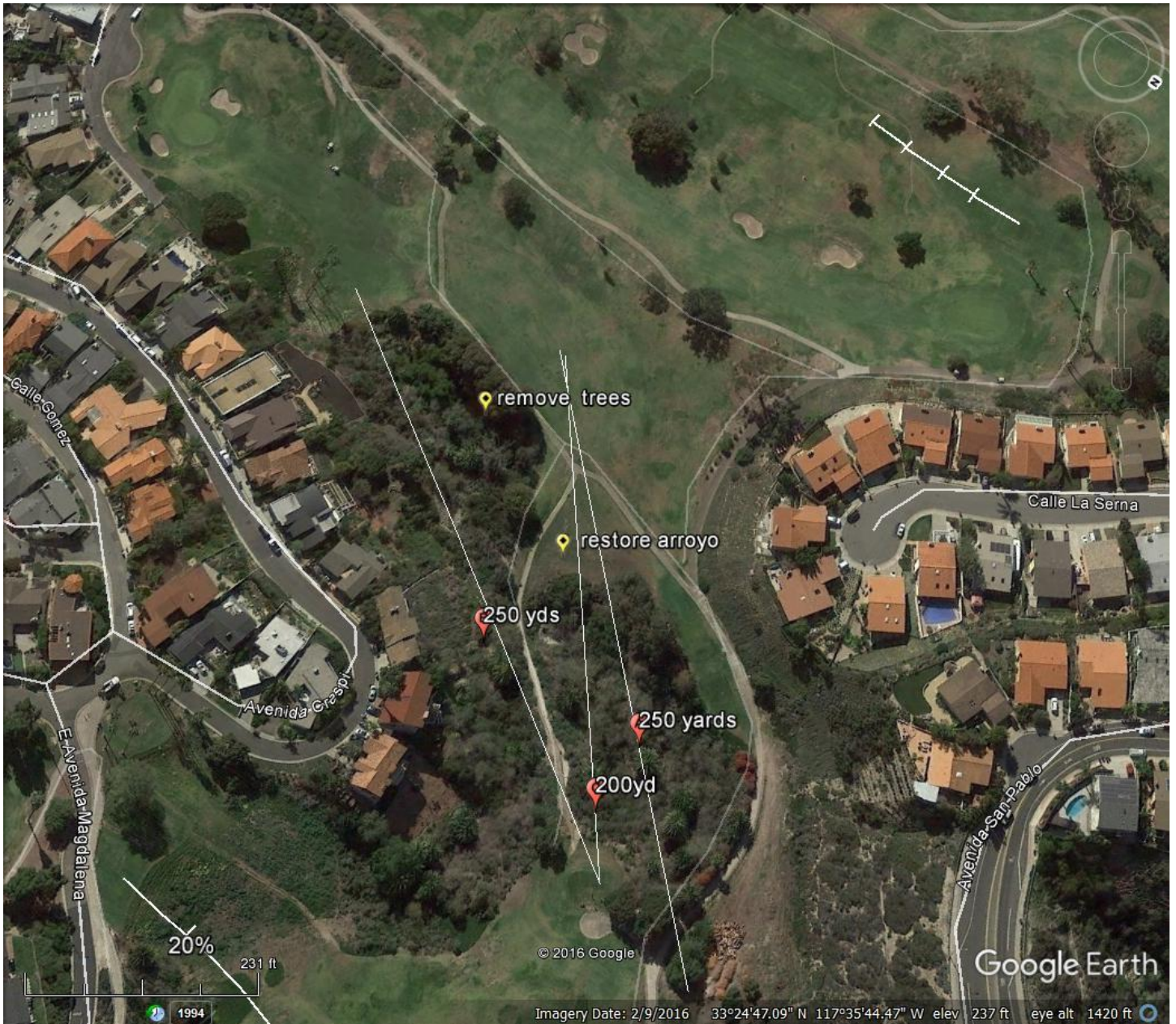
Discussion: Council awarded funds to do tee top renovations of select tees. Hole #1 is complete and will open this week. Upcoming projects include the stripping and re-leveling of the par 3 holes (2,9,13,15). Hole 11 will also be done if funding remains. Hole 1 was completed in house, the remainder will utilize outside contractors so we can focus on the forward tees and the nursery green project.

Subject: *Agenda Item 5A: Reconsideration of the project for #16tee and associated amenities*

Discussion: Improvements to the 16th tee and hole in general were the top priority of the golf committee last year but were not funded during the budget process. Golf staff and the greens subcommittee would like to bring the item back for reconsideration.

The initial request is for design work to alter the master plan of the hole in order make it more resemble the original design of the hole. This plan would involve relocating tee boxes, removal and relocating a new restroom to replace the existing one, and re

working of the cart path around the tee area, which is currently in a state of disrepair. In addition, work would be done to the fairway and rough to remove trees and restore a natural arroyo to the left side of the hole. Such work might also include the addition of retention bunkers along the left side of the fairway and reworking of the cart path which is currently on the left side.



The general poor state of this hole currently combined with the vision to return it to past design principles represents the greatest single opportunity to improve the course in an impactful way. The hole was originally a ‘cape hole,’ a common design element in traditional golf architecture in which the hole bends around or along a hazard, forcing the player select a route that most suits his game. Generally, more risk

translates to more reward, and players seldom choose wisely. A well known example of a cape hole from the same era is #18 at Pebble Beach.

In addition, the removal of the trees would not only return the original strategy, but also bring back a sweeping ocean view that is currently lost. The arroyo restoration would also significantly improve the aesthetics of the hole.

Currently, the presence of trees restrict the direction of shot to a narrow opening or to a blind shot over the trees. Some long hitting golfers may choose to drive through the arroyo in hopes of clearing the chasm. Re-designing this hole would remove the line of eucalyptus trees and relocate the tee box to a more appropriate distance for today's golfers. The existing bathroom would most likely need to be relocated to accommodate moving the tees.

Subject: ***Agenda Item 5B: Discussion of emergency work to repair path near #16 tee***

Discussion: The path near the restroom by #16 tee has been in a declining condition for some time. Recent storms have undermined the path and some emergency work will be necessary. The broken and loose section(s) will need to be removed and repaired. In addition, over the holidays a cart struck the support post for the restroom, severing it at its base. A temporary support has been installed until such time it can be properly repaired.

Subject: ***Agenda Item 5C: Commendation for outgoing Committee Member Kevin Kellerman***

Discussion: Staff and the Committee thank our friend Kevin Kellerman for his years of service on the Golf Committee and wish he and his wife a happy retirement in Scottsdale.

Subject: ***Agenda Item 6: Communications***

Discussion: Formal communications to the Golf Manager since the last meeting:

- There was a complaint about carts not being allowed on the fairway
- There was a complaint about cart damage on wet fairways
- There was a complaint about noise in the am on #6 fairway
- There was a complaint regarding the door handle to the CH downstairs bathroom which is maintained by the restaurant.
- There was a complaint about a strong smell in the main clubhouse bathroom which is maintained by the restaurant
- There was a complaint about palm fronds falling on neighboring properties
- There was a complaint regarding an irrigation head out of adjustment and hitting an adjacent home

Subject: *Agenda Item 7: Staff Report*

Discussion: Winter is here and last year's anticipated El Nino looks to have finally arrived a year late! We have been experiencing large amounts of rain for the first time in several years.

First, the good news: we need the rain. The rains will flush the soil of salts that have accumulated over several years of drought. The reclaimed water we use to irrigate with is very high in salts and without rains the salt builds up, first affecting trees then eventually the grass and the soil itself also. We also save a ton of money on irrigation since for the last several years we have had to water regularly during winter.

Now the bad news. In the near term, rain is bad for business, especially when it happens on weekends and holidays as seems to be the case thus far this year. People don't golf in the rain. Even when the skies clear and people want to go out we must sometimes restrict carts to the path which discourages many. Rain also delays projects as the ground becomes too wet to work with or the small crew is diverted to deal with storm clean up, which is always an issue because storms do cause direct damage. As the soil becomes saturated and the wind howls, some trees will topple. This is especially true after so many years of drought have restricted the size and reach of the tree roots that anchor down the trees. We lost one large eucalyptus behind #3 and will need to remove another there when it is dry enough to get the trucks to it. If the pattern of rain continues we can expect more to follow.

In other news, the restaurant and city put artificial turf in at the wedding chapel since we last met. It looks nice and will solve what was turning into a real maintenance headache. Attached is a report from the USGA from their recent annual visit, and the November and December rounds and revenue will be discussed at the meeting.

Course Consulting Service ON-SITE VISIT REPORT



San Clemente Golf Course

San Clemente, California

Visit date: October 27, 2016

Present:

Bob Baker, Mayor
Dick Veale, Golf Committee
Gus Nelson, Golf Manager
Jordan Gilmore, Assistant Superintendent
Patrick Gross, USGA

United States Golf Association

Patrick J. Gross, Director | Green Section | West Region
505 North Tustin Ave, Suite 121 | Santa Ana, California | (714) 542-5766 | pgross@usga.org

The USGA Green Section develops and disseminates sustainable management practices that produce better playing conditions for better golf.

The following report summarizes the discussions and recommendations made during the Course Consulting Service visit on October 27, 2016.

It was a pleasure to return to San Clemente Golf Course to discuss golf course maintenance issues on behalf of the USGA Green Section. Steady progress was noted with several improvement projects over the past year including the removal of trees behind No. 5 green, root pruning at No. 13 green and improved control of gray leaf spot disease on the fairways. Sincere compliments are extended for your progress in these many areas.

The focus of the visit was to review general golf course conditions and offer suggestions for long-range and short-term improvement. Specific topics covered in this report include:

- Practice putting green
- Putting green management programs
- Tees
- Fairways and rough
- Irrigation system improvement
- Labor resources

PRACTICE PUTTING GREEN

The proposed project was reviewed during the visit to raise the west end of the practice putting green to create more usable space for putting and practice. The proposal included stripping the existing turf, adding more sand to level the area and replacing the turf. Although this sounds like a simple and straightforward project, increasing the



Raising the west end of the practice green by adding sand is not recommended since this will reduce water holding capacity and cause difficulties sustaining healthy turf growth.

depth of the root zone will result in less water retention and more difficulty managing and maintaining healthy turf. Furthermore, the relatively small area will have very little impact on playing quality, and it was recommended to forego the project.

PUTTING GREEN MANAGEMENT PROGRAMS

Turf health and playing quality – In general, the greens displayed healthy turf growth and good surface quality on the day of the visit. Examination of soil profile samples indicated healthy root growth to a depth of 4 inches and a slight reduction in organic matter layer levels in the surface of the greens compared to last year. It was good to hear that the Dry-Ject™ aeration method was used earlier in the year with good results. This is an effective and efficient contractor service that has been very popular at other courses throughout Southern California. It was agreed that the Dry-Ject™ aeration process should be used in March and May of next year as part of your annual core aeration and sand topdressing program. The maintenance staff has also done an excellent job of controlling bermudagrass and kikuyugrass infestations while increasing the overall population of creeping bentgrass in the greens. This has resulted in a stronger, more resilient turf with better overall playing quality. Current agronomic programs for management of the greens are on the right track and should continue as planned over the coming year.



Soil profile samples taken from the greens showed a reduction in organic matter levels near the surface and a deep, vigorous root system, which is an indication that the greens are in healthy condition.

Putting green expansion – A project was underway on No. 17 green to restore the original size and shape of the green and reclaim lost hole locations. The protocol involved probing the perimeter of the green to find the extent of the original root zone mix followed by excavation of the bermudagrass/kikuyugrass sod, the addition of a compatible root zone material to restore a uniform 12-inch root zone depth and sodding with creeping bentgrass. Details of the project were found to be consistent with sound agronomic practices, and it was recommended to continue with this project using the same protocol with priority given to the restoration of expansion of No. 3 green.



A project to restore the original size and shape of No. 17 green was in progress on the day of the visit, which has successfully restored previously lost hole locations.

Leveling collars – Sand deposits and kikuyugrass thatch has resulted in a raised hump that has formed on many of the putting green collars. This disrupts surface drainage and negatively impacts playing quality. It was recommended to develop a program for leveling the collars that involves lifting the existing turf, smoothing the underlying soil and removing any excess soil deposits, followed by replacing the sod.

Greens Nos. 5 and 13 – Healthy turf growth was successfully restored at the back of No. 5 green as a result of removing the large ficus trees and replacing them with palm trees, which have less invasive roots. As a result, tree root encroachment has been greatly reduced and more sunlight is reaching the turf surface. It was suggested to continue working on removing any remaining surface roots at the rear of No. 5 green as time is available in the work schedule. It was good to hear that root pruning was performed at the rear of No. 13 green to cut encroaching stone pine roots that were negatively impacting turf growth. Both projects were very effective, and sincere compliments are extended for a job well done.



(L) Photo of No. 5 green last year showing turf damage and tree root encroachment. (R) The same area in 2016 showing remarkable recovery as a result of tree removal and the elimination of encroaching tree roots.

Swinecress control – Small infestations of the broadleaf swinecress (*Coronopus didymus*) were evident on several greens. Good control can be achieved by making spot applications of Trimec[®] Broadleaf Herbicide Bentgrass Formula at recommended label rates. Superintendents in northern California have also had good results making spot applications of Lontrel[®] herbicide. Given the fact that swinecress can germinate and establish over an 8-month period, it was recommended to apply bensulide in March and June to prevent germination and establishment.

TEES

Tee leveling – Heavy play and divot injury contributes to uneven surface conditions on the tees. It was recommended to establish a program of leveling three to five teeing grounds each year on an annual schedule and include heavy wear tees, such as Nos. 1 and 14 in the schedule every two years.

Goosegrass control – A steady reduction in the population of goosegrass was noted on the tees as a result of preemergence herbicide applications earlier in the year. Populations are still high on many of the tee banks, and it was recommended to develop a map of current infestations and plan for the application of preemergence herbicide on all tees and sections of the tee banks next February/March.

Establishing forward tees – It was good to hear that a project was funded to establish additional forward tees, which is expected to improve the pace of play and increase enjoyment of the game for women and senior players. Implementation of the project was delayed due to a lack of labor resources, but it was good to hear that construction will be underway soon. The article [Move Forward, Not Back!](#) provides further details on how to successfully implement this program.

FAIRWAYS AND ROUGH

Controlling cart traffic – Various options were discussed for controlling cart traffic and reducing the amount of turf damage caused by carts. Successful programs generally involve good golfer education in combination with the use of ropes and stakes to redirect cart traffic and allow damaged areas to recover. The key to success is checking and adjusting the ropes and stakes multiple times throughout the day, which will require additional labor for implementation.

Fine fescue establishment for the rough on hole No. 8 – A construction project was recently completed along the right side of hole No. 8 and various grass options were discussed for establishing a low-maintenance rough in this area. Given the fact that the area along the fence line is not in play, it was recommended to establish a combination of fine fescue varieties including hard fescue, sheep fescue and Chewings fescue. The area should be seeded at a rate of 10 pounds per 1,000 square feet in the fall. The Links mix available from Stover Seed would be a good choice and has the benefit of tolerating light rates of glyphosate for weed control.

IRRIGATION SYSTEM IMPROVEMENT

The current irrigation system was installed in the mid-1980s and has since been managed and maintained by replacement of irrigation heads and other system components as needed. The corrosive nature of the recycled water used for irrigation causes accelerated wear on sprinkler nozzles, check valves and other components and has reached the point where several irrigation system parts need to be replaced. It was recommended to contact an irrigation designer for a complete analysis of the system and develop plans for upgrading and replacement of the system. The article [When Is It Time to Replace an Irrigation System?](#) provides further details on performing this analysis.

LABOR RESOURCES

San Clemente Golf Course has been remarkably efficient in producing acceptable playing conditions given the limited size of the maintenance staff. Given the fact that turf growth is more vigorous during the summer, it was agreed that the best strategy is to focus on hiring additional seasonal workers during the summer and fall in order to keep up with mowing and maintenance details.

CONCLUSION

Thank you for the opportunity to visit San Clemente Golf Course. Best wishes for continued progress, and we look forward to being of further assistance on behalf of the USGA Green Section.

Respectfully submitted,



Patrick J. Gross, Director, West Region
USGA Green Section

pg:dc

Distribution:

Gus Nelson, Golf Manager