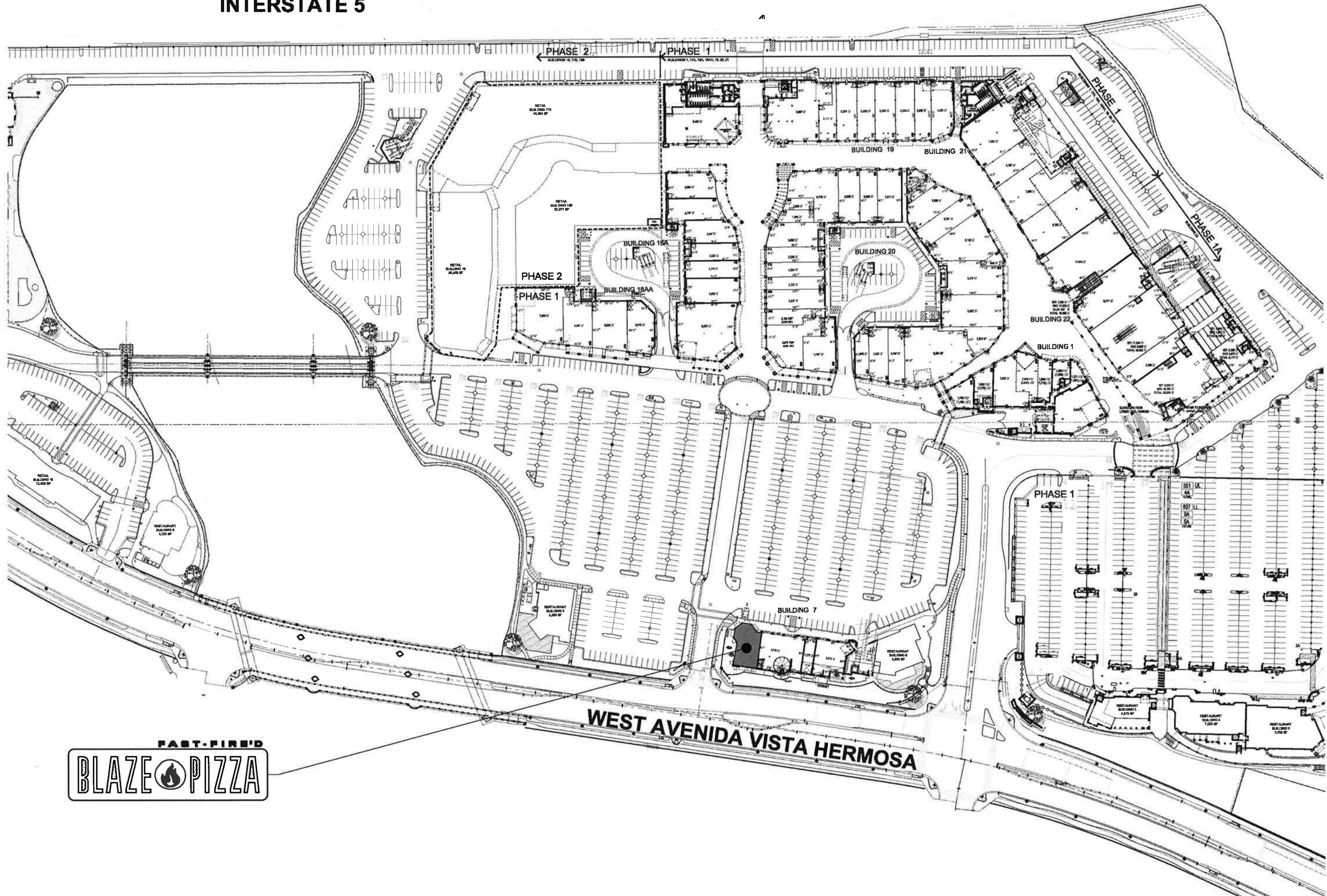


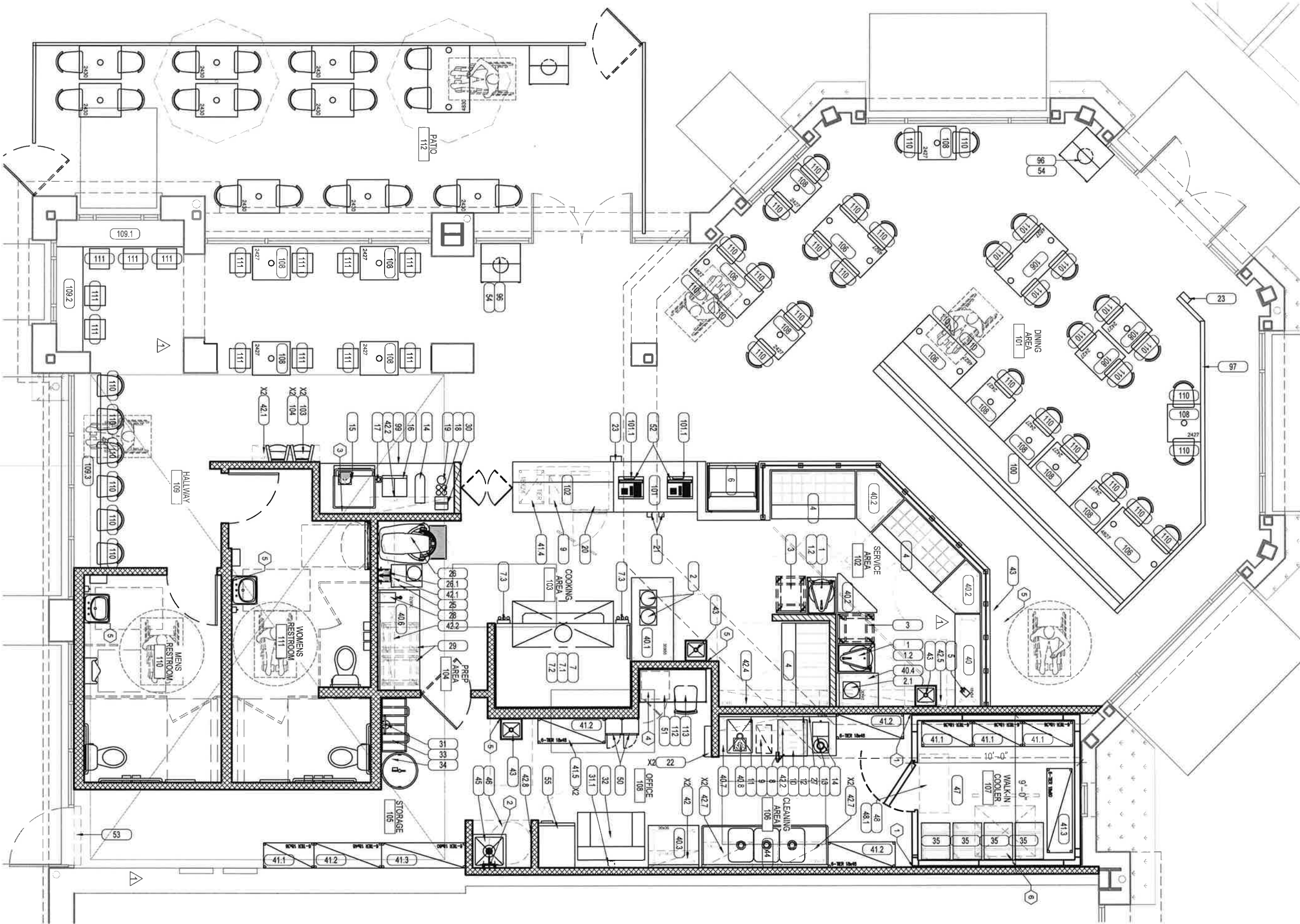
INTERSTATE 5



WEST AVENIDA VISTA HERMOSA



EQUIPMENT PLAN



CODED NOTES

- 1 METAL CLOSURE PIECE BETWEEN WALK-IN-COOLER & WALL BY KITCHEN EQUIPMENT SUPPLIER.
- 2 MOP SINK TO HAVE A DEDICATED WATER SUPPLY FOR THE CHEMICAL DISPENSER. CHEMICAL DISPENSERS CANNOT BE CONNECTED DIRECTLY TO THE MOP SINK FAUCET. PROVIDE HANGING MOP HOOKS ON BACK WALL TO ALLOW FOR AIR DRYING OF MOPS.
- 3 SODA MACHINE TO HAVE REDUCED PRESSURE BACKUP DEVICE (RPBD). NO COPPER, BRASS, OR OTHER CORRODIBLE MATERIALS ARE ALLOWED AFTER THE RPBD.
- 4 4" HIGH CONCRETE PAD FOR SAFE - COORDINATE LOCATION WITH BLAZE CONSTRUCTION COORDINATOR.
- 5 EMPLOYEES MUST WASH HAND SIGNAGE (PROVIDED BY GC)
- 6 WALK-IN EVAP. TO BE LOCATED ABOVE DOUGH RACKS