



**AGENDA FOR THE REGULAR
MEETING OF THE COASTAL ADVISORY COMMITTEE
FOR THE CITY OF SAN CLEMENTE, CALIFORNIA**

**San Clemente Community Center
Ole Hanson Fireside Room
100 North Calle Seville
San Clemente, California**

**November 13, 2014
7:00 p.m.**

RULES FOR ADDRESSING THE COMMITTEE

Members of the audience who wish to address the Committee are requested to complete one of the forms located on the table near the entrance of the Ole Hanson Room and submit it to the Chairperson.

For matters on the agenda, public comments will be received at the time that the Coastal Advisory Committee considers the agenda item.

Please note: Written material distributed to the Coastal Advisory Committee, after the original agenda packet was distributed, is available for public inspection in the Environmental Programs office located at 910 Calle Negocio, San Clemente, CA during normal business hours.

- 1. CALL TO ORDER**
- 2. PLEDGE OF ALLEGIANCE**
- 3. ROLL CALL**
- 4. APPROVAL OF MINUTES**
 - A. September 9, 2014
 - B. October 9, 2014

Members of the audience who wish to address the Committee on matters of public interest pertaining to the City may step to the podium, state their name and the City in which they reside, and make their presentation. Please limit presentations to three minutes. Since the Committee cannot discuss or take action on matters not on the agenda, items of concern which are not urgent in nature can be resolved more expeditiously by completing and submitting a written request to the Engineering Division, Environmental Programs Section.

Pursuant to the Americans with Disabilities Act, persons with a disability who require a disability-related modification or accommodation in order to participate in a meeting, including auxiliary aids or services, may request such modification or accommodation from the Environmental Programs Assistant at (949) 361-6143. Notification 24 hours prior to the meeting will enable the City to make reasonable arrangements to assure accessibility to the meeting.

5. PUBLIC INPUT

6. OLD BUSINESS – None.

7. NEW BUSINESS

A. Renewal of Opportunistic Sand Replenishment Permits

A memo by Tom Bonigut, Assistant City Engineer, concerning renewal of several permits related to the opportunistic sand replenishment program.

Staff Recommendation: That the CAC recommend City Council approval to renew the State Lands Lease and Coastal Commission permit for the Opportunistic Sand Replenishment Program.

B. Street Sweeping Program Update

A memo by Mary Vondrak, Senior Management Analyst, with an overview on the history and current status of the City's street sweeping program.

Staff Recommendation: Information and discussion item

C. Poche AB411 Monitoring Season Update

A memo by Mary Vondrak, Senior Management Analyst, with an update of the Poche UV Treatment System performance and AB411 Monitoring results for the 2014 operating season.

Staff Recommendation: Information and discussion item.

8. ORAL AND WRITTEN COMMUNICATION

A. Bacteriological Monitoring Report – Date of Posted Report 11/10/14

Information item – Receive and File

B. October 2014 Environmental Programs Update

A summary of recent activities conducted by the City related to runoff/surface water quality and solid waste/recycling.

Information item – Receive and File

9. ITEMS FROM STAFF

A. Potential Future Agenda Items

A memo by Mary Vondrak, Senior Management Analyst, on scheduling of potential future Coastal Advisory Committee agenda items.

Staff Recommendation: Information and Discussion Item.

10. ITEMS FROM COMMITTEE MEMBERS

11. ADJOURNMENT

Adjourn the meeting to the next regular meeting of the Coastal Advisory Committee on Thursday, December 11, 2014 at 7:00 P.M., in the Ole Hanson Fireside Room, at the Community Center, 100 N. Seville, San Clemente, California.

4.A.

CITY OF SAN CLEMENTE

Joint City Council, Commissions and Committees Meeting

September 9, 2014

A Joint City Council/Commissions/Committees Meeting was called to order at 7:10 p.m. at Pride of the Pacific Restaurant, located at the San Clemente Golf Course, 150 Avenida Magdalena, San Clemente, California, by Mayor Brown.

**CITY COUNCIL
MEMBERS PRESENT**

BAKER, DONCHAK, HAMM, MAYOR BROWN

**CITY COUNCIL
MEMBERS ABSENT**

EVERT

**PLANNING COMMISSION
MEMBERS PRESENT**

BROWN, CRANDELL, EGGLESTON, SMITH,
WARD, CHAIRPERSON DARDEN

**PLANNING COMMISSION
MEMBERS ABSENT**

RUEHLIN

**GOLF COURSE COMMITTEE
MEMBERS PRESENT**

DIVEL, KELLERMAN, KIERNAN, STEEL, CHAIR-
PERSON AZZOLLINI

**GOLF COURSE COMMITTEE
MEMBERS ABSENT**

GOOCH, VEALE

**INVESTMENT ADVISORY
COMMITTEE MEMBERS
PRESENT**

ANDERSON, BAKER, CARTER, CHAIRPERSON
TAYLOR

**INVESTMENT ADVISORY
COMMITTEE MEMBERS
ABSENT**

WELLS

**BEACHES, PARKS AND
RECREATION COMMISSION
MEMBERS PRESENT**

BANDARUK, CHITWOOD, MURPHY, WICKS,
CHAIRPERSON STREGER

**BEACHES, PARKS AND
RECREATION COMMISSION
MEMBERS ABSENT**

FOY, MCCORMACK

HUMAN AFFAIRS
COMMITTEE MEMBERS
PRESENT

DROWN, EWING, HASBROOK, PINTO, SMITH,
SUTHERLAND, CHAIRPERSON CHILDS

HUMAN AFFAIRS
COMMITTEE MEMBERS
ABSENT

NONE

COASTAL ADVISORY
COMMITTEE MEMBERS
PRESENT

AMBROSE, BETTS, DICKEY, MCMAINS, CHAIR-
PERSON BROWN

COASTAL ADVISORY
COMMITTEE MEMBERS
ABSENT

MCCORMACK, (ONE VACANT POSITION)

* * *

PLEDGE OF ALLEGIANCE

City Manager Gudgeirsson led the Pledge of Allegiance.

STATUS OF THE MARBLEHEAD COASTAL PROJECT

Assistant City Engineer Bonigut reviewed the status of the Marblehead Coastal project; noted that Taylor Morrison Homes is the developer for the residential component and that Craig Realty is the developer for the commercial component; reviewed the status of the project infrastructure, noting that development of the model homes will commence in February 2015; provided an overview of the amenities associated with the project, including the trail system, habitat restoration, parks, landscaping, street lights, Vista Hermosa bridge, street improvements and traffic signals; summarized the commercial portion of the project, noting that the first phase of the center is expected to open in late summer 2015; responded to questions.

TIMELINE FOR TRAFFIC CIRCULATION PROJECTS

Assistant City Engineer Bonigut reviewed the status of the below projects and responded to inquiries:

- El Camino Real Class I Pedestrian Bike Path
- La Pata Gap Closure and Camino Del Rio Extension
- I-5 Projects (HOV/carpool widening and Pico interchange reconstruction).

ROUNDTABLE

Beaches, Parks and Recreation Commission

Chairperson Streger introduced the members of the Beaches, Parks and Recreation Commission; reviewed issues that the Commission addressed over the past year, which included sports park partnerships, access for portions of the beach trail, and the issue of whether dogs should be allowed in non-playground areas of City parks; noted that the Commission will soon commence consideration of the Beaches, Parks and Recreation Master Plan, noting that it will take approximately 1-1/2 years to complete.

Investment Advisory Committee

Chairperson Taylor (City Treasurer) introduced the members of the Investment Advisory Committee; noted that the purpose of the Committee is to review investment practices with the primary goal of safety, followed by liquidity and return, in that order; reported that the City retained Chandler Asset Management, an external investment advisor, to help manage the City's investment portfolio.

Coastal Advisory Committee

Chairperson Brown introduced the members of the Coastal Advisory Committee; advised that over the last year the Committee supported and recommended the clean ocean fee, which was passed by San Clemente property owners, supported the Poche Beach Action Plan, supported the implementation of a sharps drop box program, recommended environmental projects, embarked on a clean ocean outreach campaign, and provided input into sand replenishment; noted that the Committee will revisit the street sweeping program in the coming year and will assist with the City's Local Coastal Plan.

Golf Course Committee

Chairperson Azzollini introduced the members of the Golf Course Committee and commended Golf Course Manager, Gus Nelson; stated that the Committee's areas of involvement during the past year included economic decisions in response to high reclaimed water rates and the issue of tree and view preservation; explained that the Committee is reconsidering a strategic plan to deal with privately owned golf carts due to golfer interest in again allowing private carts on the course; commended the quality of the golf course's banquet facilities.

Planning Commission

Chairperson Darden introduced the members of the Planning Commission; summarized the Commission's accomplishments over the past year, which included the Strategic Implementation Plan, streamlining processes, the El Camino Real sidewalk and bike lane project, SB2, Local Coastal Plan, Ole Hanson Beach Club rehabilitation, beach restrooms, and Surfers' Row; noted that in the upcoming year, the Commission will consider the zoning ordinance update, Local Coastal Plan, downtown utilities master plan (undergrounding), collaborative governance project, and applications for the new gateway project in the K-Mart Plaza.

Human Affairs Committee

Chairperson Childs introduced the members of the Human Affairs Committee and recognized Housing Programs Planner, Denise Obrero; reviewed the Committee's involvements; reported on the San Clemente Collaborative, the little library project, the new "Love San Clemente" website (that was created to assist individuals who wish to volunteer), Community Resource Fairs at the Family Assistance Ministries facility, and the counseling program at San Clemente High School.

Committee Member Sutherland noted that Councilmember Baker informed the Committee about a village program that is in place in another community that strives to help aging babyboomers stay in their homes; noted that the Human Affairs Committee is considering the feasibility of a similar program for San Clemente.

ORAL COMMUNICATIONS

Brenda Miller, San Clemente, suggested that a link to the "Love San Clemente" website be added to the City's website.

ADJOURNMENT

There being no further business, the Joint Meeting was adjourned at 8:11 p.m.



MAYOR of the City of
San Clemente, California



CITY CLERK of the City of
San Clemente, California

Respectfully submitted,

Don Brown, Chair

Attest:

Mary Vondrak, Senior Management Analyst

MINUTES
CITY OF SAN CLEMENTE
REGULAR COASTAL ADVISORY COMMITTEE MEETING
Thursday, October 9, 2014 @ 7:00 p.m.
Community Center, Ole Hanson Fireside Room
100 N. Seville, San Clemente, CA 92672

1. CALL TO ORDER

Committee Member Brown called the meeting to order at 7:07 p.m.

2. PLEDGE OF ALLEGIANCE

Chair Brown led the Pledge of Allegiance.

3. ROLL CALL

Present: Richard Dickey, Chris McCormack, and John McMains; Chair Don Brown

Absent: Vice Chair Susan Ambrose, Alison Betts

Staff Present: Mary Vondrak, Senior Management Analyst
Eileen White, Recording Secretary

4. APPROVAL OF MINUTES

A. Minutes of the Regular CAC Meeting of July 10, 2014

IT WAS MOVED BY COMMITTEE MEMBER DICKEY, SECONDED BY COMMITTEE MEMBER MCMAINS, AND CARRIED 3-0-1, WITH COMMITTEE MEMBER MCCORMACK ABSTAINING, to receive and file the minutes of the Regular CAC Meeting of July 10, 2014, with the following revision:

Page 4, 3rd paragraph, replace "health and radiation" with "health, physics, and radiation safety"

5. PUBLIC INPUT - None

6. OLD BUSINESS - None

7. NEW BUSINESS

A. Update on Recent Statewide Legislation

Senior Management Analyst Vondrak reviewed the staff report, updates on recent statewide legislation concerning Single Use Plastic Bags, Water Efficient Landscapes, and Organic Waste Reduction. Staff recommended the Committee provide input, and receive and file the staff report.

For the benefit of new members, Chair Brown related this Committee's past efforts to address environmental concerns with recommendations to City Council. This Committee recommended adoption of an ordinance to ban the use of Styrofoam, which was eventually enacted. A draft ordinance to ban single use plastic bags was put aside in order to follow the State's pursuit of a state-wide ban. He recounted this Committee's efforts to revise the existing street sweeping program to expand the prohibited parking areas to increase efficiency of the program. He recommended this Committee refresh the data, review the ordinance, and consider resubmitting the proposal to City Council for potential consideration.

Senior Management Analyst Vondrak agreed to forward past reports and proposed ordinance concerning the enhanced street sweeping to the new Committee Members.

Report received and filed.

B. Annual Assessment of Clean Ocean Program Outreach Campaign

Mary Vondrak, Senior Management Analyst, narrated a PowerPoint Presentation entitled, "Clean Ocean Outreach, Fiscal Year 2015 Update, dated October 9, 2014." She provided an overview of the strategy to focus on three "end-state" behaviors; reviewed the County of Orange Stormwater Program "spokes gnome" campaign; displayed samples of print and web banner advertising; reviewed online marketing and redirection efforts; displayed samples of emails sent to the public as reminders. She reviewed the results of the Outreach and discussed next steps in the campaign. Staff recommended the Committee discuss the assessment and provide direction.

Chair Brown recommended the Committee Members review the end state behaviors that have been the focus of the campaign and bring back potential alternatives to a future meeting for discussion and potential action. He commented that the campaign has been great to date and generated positive results; suggested the message could be tightened as the campaign moves forward.

Report received and filed.

C. Coastal Advisory Committee Member Vacancy

Senior Management Analyst Vondrak requested the Committee consider how to move forward with the existing vacancy on the Committee. Options

include mounting a campaign to replace the vacancy or waiting until next year's City-wide campaign to fill seats. She asked the Committee discuss and provide a recommendation to staff.

Chair Brown suggested the Committee wait and consider its options following upcoming City Council elections, noting that one of the Planning Commissioners is on ballot for City Council. In the event that vacancy needs to be filled, and depending on actions City Council decides to take, action on the vacancy for the CAC seat could be determined at that time.

Following discussion, the consensus of the Commission was to retain the status quo and take the opportunity to fill the vacancy if/when another vacancy comes up. In the event no other vacancies occur, the replacement campaign can wait until next year during the regular City-wide campaign.

8. ORAL AND WRITTEN COMMUNICATIONS

- A. Bacterial Monitoring Report dated October 2, 2014.
- B. July, August, & September 2014 Environmental Programs Update

Committee Members received and filed items 7A & 7B.

9. ITEMS FROM STAFF

- A. Potential Future Agenda Items

Mary Vondrak, Senior Management Analyst, reviewed the Potential Future Agenda Items and requested the Committee Members provide input. No additional agenda items were added to the list.

Chair Brown stated that past speaker Lawrence Hanmo provided valuable and pertinent information regarding sand replenishment. He requested staff include a summarization of past discussion in the Sand Replenishment Update scheduled for December. Additionally, he encouraged the Committee Members to contact him and/or Senior Management Analyst Vondrak with suggestions for future topics.

Report received and filed.

- B. Announcements from Staff

Senior Management Analyst Vondrak reviewed recent events including the Coastal Clean Up, shredding event, and Watershed Task Force Art Auction.

10. ITEMS FROM COMMITTEE MEMBERS

No reports.

11. ADJOURNMENT

MOVED BY COMMITTEE MEMBER MCCORMACK, SECONDED BY COMMITTEE MEMBER DICKEY, AND UNANIMOUSLY CARRIED to adjourn at 8:20 p.m. to the Regular Meeting to be held on Thursday, November 13, 2014, at 7:00 p.m. in the Ole Hanson Room of the Community Center located at 100 N. Calle Seville, San Clemente, California.

Respectfully submitted,

Don Brown, Chair

Attest:

Mary Vondrak, Senior Management Analyst



7.A.

Memorandum Engineering Division

November 3, 2014

To: Coastal Advisory Committee (CAC)
From: Tom Bonigut, Assistant City Engineer
Subject: Renewal of Opportunistic Sand Replenishment Permits

There are three permits and one lease agreement associated with the City's opportunistic sand replenishment program as summarized below. The approvals were originally valid until 2009. In 2009 the CAC recommended, and the City Council approved, staff to renew these approvals. The State Lands lease and Coastal Commission permit were renewed fairly quickly, but the Corps of Engineers was not able to renew its permit until 2013 (which also delayed the Regional Water Board certification). Therefore, the approvals for the opportunistic sand replenishment program are "unsynchronized" and now have differing expiration dates. Also, in renewing its permit the Corps of Engineers reduced the total amount authorized to be placed to 200,000 cubic yards annually and reduced the number of authorized sand placement sites to North Beach and Linda Lane Beach. This was due to Corps and EPA to minimize environmental impacts associated with sand placement that might occur from both the City's opportunistic sand replenishment program and the Corps-San Clemente sand replenishment project.

The State Lands Lease recently expired and the Coastal Commission permit will expire in December 2014. To renew the State Lands lease will require an application fee of \$35 and a \$3,000 staff-time deposit (any unused funds would be returned to the City). There is no cost, other than nominal City staff time, to renew the Coastal Commission Permit.

- U.S. Army Corps of Engineers
 - Regional General Permit No. 66, project-specific permit #200400838-JPL
 - Valid until February 18, 2018
 - To renew, must submit a letter request for consideration by the Corps' Regulatory Section.
- California Coastal Commission
 - Coastal Development Permit No. 5-02-142-A1
 - Valid until December 2014

- To renew, must file an application to request an amendment for a time extension.
- San Diego Regional Water Quality Control Board
 - 401 Certification No. 02C-059
 - Valid until Army Corps permit expires (February 18, 2018).
 - To renew, only requires coordination with Corps of Engineers.
- State Lands Commission
 - General Lease Agreement No. PRC 8567.9 (file reference WP 8567.9)
 - Expired October 31, 2014
 - To renew, will require a new application to request an amendment, along with an application fee of \$35 and \$3,000 deposit.

The Clean Ocean Program budget has available permit fee funds that could be used to renew the State Lands Lease, although City Council approval of the funding and the lease would be needed.

Staff Recommendation: That the CAC recommend City Council approval to renew the State Lands Lease and Coastal Commission permit for the Opportunistic Sand Replenishment Program.



Memorandum Engineering

Monday, November 10, 2014

To: Coastal Advisory Committee
From: Mary Vondrak, Senior Management Analyst
Subject: Street Sweeping Program Update

Per CAC request, the item provides an update and history of considerations of the street sweeping program. The City's street sweeping program is an important component of the City's efforts to prevent street pollutants from entering the storm drains which lead to the ocean. The State Water Resources Control Board requires that all municipalities develop and implement an effective street sweeping program as a best management practice (BMP) for improving receiving water quality.

Currently only the streets in the Neighborhood Pride areas of the City have posted parking restrictions on designated street sweeping days. Vehicles not moved during times of street sweeping impede the street sweeper's effectiveness as the sweeper is not able to access the curb.

History

In 2009 the Coastal Advisory Committee expressed an interest in researching the possibility of posting additional streets with no parking restrictions for street sweeping and changing the frequency of sweeping on selected streets. In order to better assess the need, the CAC requested an evaluation of the City's contracted street sweeping program conducted by Cannon Pacific. An evaluation was performed by the contractor in July and August of 2009. The report of the findings focused on two tasks. The first was to determine the volume, weight and composition of debris. The second task focused on the number of parked vehicles recorded per street, per day. A copy of this report can be found in **Attachment 1**.

At the December 6, 2011 City Council meeting, staff requested City Council direction based on CAC recommendation to proceed with developing a plan to post all public City streets with parking restrictions for street sweeping. The City Council opted to re-evaluate the recommendations instead as part of its Strategic Planning meeting on February 15, 2012. During the meeting, Council members were presented with a list of potential priority projects for the City and asked to vote for their top five priorities. At that time, the Council felt other projects garnered higher priority. The potential project has not had any consideration since this meeting.



September 14, 2009

David Dendel
Maintenance Services Manager
City of San Clemente
390 Avenida Pico
San Clemente, CA 92672

RE: Street Sweeping Data Collection

Dear Mr. Dendel;

Per the task order approved on June 25, 2009 Cannon Pacific Services submits the following report for your review and use. Please let us know if there are any questions.

Sincerely,

Lee Miller
President and C.E.O.

SUMMARY

In an effort to quantify the amount and type of debris collected within the City limits of San Clemente through the street sweeping program, the City engaged Cannon Pacific Services, Inc. to collect as much data as possible pertinent to the street sweeping program.

Cannon was directed to collect the type, quantity and composition of debris as well as the number of parked vehicles over three complete sweeping cycles and to detail this data in a file suitable for sorting, compiling and evaluating the data. A complete sweeping cycle is defined as a two-week period.

The dates of the three cycles were as follows:

Cycle 1: July 1, 2009- July 10, 2009

Cycle 2: July 13, 2009 – July 24, 2009

Cycle 3: July 27, 2009 – August 14, 2009

During the collection of information, a second employee was assigned to each of the two street sweeping vehicles and instructed to record all data and report it back at the end of each week to our office where the data was input into an excel spreadsheet which is provided herein as “Exhibit A”. A summary of staff time is provided below:

- A total of 80 hours per cycle per each of the two sweeper trucks for 3 consecutive cycles was required to complete the task; a total of 480 man hours.
- 8 hours of overtime per each of the two drivers throughout the entire six week period for a total of 16 hours of overtime.
- 22 administrative hours for data input, tabulation and summary.

There are a few unique situations to consider when reviewing the reports:

1. Due to operational challenges, the data was incomplete on route #12 cycles 1 and 3 and as such no data was entered. By not entering false data, the report maintains accuracy with the information entered in cycle 2.
2. Routes #13 and #14 are the same streets and as such, all data is recorded under route #13.
3. Route #8 is a once per month route and the way the schedule fell compared to the data cycles, route #8 was only swept once and the data is recorded accurately under route #8, cycle 1.

TASK 1: DEBRIS

The objective was to track and record the estimated volume (yards), weight (tons) and composition of debris collected by route number for the two separate sweeping trucks operating in the City. Then Cannon was to record the data collected by route number, date and time and provide electronic file to the City for its use in sorting by any category necessary. The volume of debris collected was approximately 186 cubic yards and 180 tons over the three cycles. Greater detail

is provided in the electronic excel file where it can be sorted by route, date, street or volume of debris.

In summary, the **greatest volume of debris in cubic yards** was collected by order of magnitude as listed below with the routes containing the greatest amount of debris listed first and the least listed last:

1. Route 1
2. Route 10
3. Route 2
4. Route 16
5. Route 3
6. Route 9
7. Route 5
8. Route 4
9. Route 6
10. Route 13
11. Route 7
12. Route 11
13. Route 12
14. Route 15
15. Route 8

In summary, the **greatest weight of debris in gross tons** was collected by order of magnitude as listed below with the routes containing the greatest amount of debris listed first and the least listed last:

1. Route 1
2. Route 10
3. Route 5
4. Route 3
5. Route 13
6. Route 4
7. Route 5
8. Route 7
9. Route 16
10. Route 11
11. Route 2
12. Route 11
13. Route 8
14. Route 12
15. Route 15

TASK 2: OMITTED FROM SCOPE OF WORK

TASK 3: PARKED VEHICLES

The number of parked vehicles was recorded per street, per day. In total 8,155 cars over the three cycles were identified as impeding the street sweeper's ability to effectively clean the curb and gutter. Greater detail is provided in the electronic excel file where it can be sorted by street, route number, by date or by number of cars to more clearly see where street posting might be effective.

In summary, the routes with the **most parked vehicles** are listed below by order of magnitude with the most cars listed first and the least cars listed last:

1. Route 11
2. Route 1
3. Route 3
4. Route 9
5. Route 5
6. Route 6
7. Route 13
8. Route 10
9. Route 2
10. Route 12
11. Route 4
12. Route 7
13. Route 16
14. Route 8
15. Route 15

Throughout the data collection process it became evident to us as service providers that the posted street sweeping route is very effective. Incentivizing residents to relocate automobiles during street sweeping results in the least amount of impediments during the sweeping process. Additionally, more frequent street sweeping results in a greater amount of debris collected at the street level, thus eliminating it from the storm water conveyance system.

**CITY OF SAN CLEMENTE
STREET SWEEPING DEBRIS COLLECTION STUDY
2009**

Route	Parked Vehicles				Debris Weight (Tons)				Debris Volume (Cubic Yards)			
	Cycle 1	Cycle 2	Cycle 3	Total	Cycle 1	Cycle 2	Cycle 3	Total	Cycle 1	Cycle 2	Cycle 3	Total
1	234	320	451	1005	9.00	4.50	12.50	26.00	7.80	3.90	10.55	22.25
2	154	135	116	405	4.25	5.75	7.50	17.50	3.75		6.50	10.25
3	457	66	366	889	2.25	3.75	8.75	14.75	3.00	3.25	9.25	15.50
4	171	41	72	284	6.50	4.50	2.00	13.00	5.25	3.90	4.50	13.65
5	485	17	440	942	4.50	4.50	4.50	13.50	3.90	6.90	2.90	13.70
6	189	198	206	593	3.75	3.80	4.00	11.55	3.25	5.25	7.25	15.75
7	89	63	76	228	4.50	2.25	3.50	10.25	3.90	2.25	6.10	12.25
8	68	-	-	68	4.50	-	-	4.50	3.90	-	-	3.90
9	292	326	258	876	4.80	5.25	4.50	14.55	3.75	3.25	4.00	11.00
10	367	253	140	760	8.75	5.80	3.00	17.55	6.25	6.25	6.25	18.75
11	388	414	401	1203	2.25	3.00	2.50	7.75	4.00	2.60	3.30	9.90
12	-	390	-	390	-	4.50	-	4.50	-	3.90	-	3.90
13	146	198	250	594	3.50	3.75	4.25	11.50	4.75	4.80	5.00	14.55
15	61	-	-	61	5.25	-	-	5.25	3.75	-	-	3.75
16	47	89	49	185	5.00	4.50	5.25	14.75	3.00	3.90	4.50	11.40
TOTALS	3148	2510	2825	8483	68.80	55.85	62.25	186.90	60.25	50.15	70.10	180.50

For top 5 routes with highest parked cars:
Route 11 = SW San Clemente (Trafalgar t Calafia)
Route 1 = Broadmoor
Route 3 = The Coast
Route 9 = Trestles / SE San Clemente
Route 5 = Shorecliffs

**CITY OF SAN CLEMENTE
STREET SWEEPING DEBRIS COLLECTION STUDY
2009-CYCLE 1**

E = Early Morning, R = Residential, P = Posted

Date	Freq.	Route #	Time	Street Name	# Parked Vehicles	Debris (weight)	Debris (volume)	Debris Composition
7/1/2009	E	3	3:00	Pico	0			Dirt/Leaves/Twigs
7/1/2009	E	3	3:30	Pico	1			Dirt/Leaves/Twigs
7/1/2009	E	3	4:00	Calle Del Cerro	0			Dirt/Leaves/Twigs
7/1/2009	E	3	4:15	Calle Del Cerro	0			Dirt/Leaves/Twigs
7/1/2009	E	3	4:25	Pico	0			Dirt/Leaves/Twigs
7/1/2009	E	3	4:43	Camino Del Sol	1			Dirt/Leaves/Twigs
7/1/2009	E	3	4:46	La Pata	0			Dirt/Leaves/Twigs
7/1/2009	E	3	5:03	Vista Hermosa	0			Dirt/Leaves/Twigs
7/1/2009	E	3	5:07	La Pata	0			Dirt/Leaves/Twigs
7/1/2009	E	3	5:18	Avenida Pico	0			Dirt/Leaves/Twigs
7/1/2009	E	3	5:21	Vista Hermosa	0			Dirt/Leaves/Twigs
7/1/2009	E	3	5:24	Avenida Talega	0			Dirt/Leaves/Twigs
7/1/2009	E	3	5:39	Hermosa	0			Dirt/Leaves/Twigs
7/1/2009	E	3	5:44	Avenida Pico	0			Dirt/Leaves/Twigs
7/1/2009	E	3	6:01	Avenida Hermosa	0			Dirt/Leaves/Twigs
7/1/2009	E	3	6:04	Pico	0			Dirt/Leaves/Twigs
7/1/2009	E	3	6:05	La Pata	0			Dirt/Leaves/Twigs
7/1/2009	E	3	6:30	Richard memorial Park	0			Dirt/Leaves/Twigs
7/1/2009	E	3	6:44	La Pata	0			Dirt/Leaves/Twigs
7/1/2009	E	3	6:53	Pico	0			Dirt/Leaves/Twigs
7/1/2009	E	3	3:15	City Yard Parking Lot	53			Leafs, Dirt
7/1/2009	E	3	3:50	North Beach Parking Lot	9			Leafs
7/1/2009	E	3	4:30	Ave. Cabrillo Lots	2			Leafs
7/1/2009	E	3	4:35	Ave. Del Mar	9			Leafs
7/1/2009	E	3	4:47	City hall Lot	26			Leafs
7/1/2009	E	3	4:55	Trafelgar T-Street Metered	2			Dirt
7/1/2009	E	3	5:06	Ave. Magdellina/ El Camino to Golf	13			Leafs
7/1/2009	E	3	5:15	Golf Course parking lot	4			Leafs, Dirt
7/1/2009	E	3	5:23	Ave. Granada Lot	0			Dirt
7/1/2009	E	3	5:29	Boys & Girl's Club	1			Leafs
7/1/2009	E	3	5:40	Library Lot	14			Dirt
7/1/2009	E	3	6:10	Pier Bowl	20			Dirt, Leafs
7/1/2009	E	3	6:15	Pier Parking Lot	25			Leafs, Dirt
7/1/2009	E	3	6:33	Ola Vista	5			Leafs, Paper
7/1/2009	E	3	6:45	Linda Ln. parking Lot	5			Leafs, Dirt
7/1/2009	E	3	7:10	Via Georgia Parking lot	1			Leafs
7/1/2009	E	3	7:51	Library Park	5			Leafs
7/1/2009	E	3	8:00	Tierra Grande Park	7			Dirt/Leafs
7/1/2009	E	3	8:15	Talega Park	9			Leafs
					212	2	3.25	
7/1/2009	R	3	7:13	Frontera	6			Dirt/Leaves/Twigs
7/1/2009	R	3	7:25	Camino Faro	31			Dirt/Leaves/Twigs
7/1/2009	R	3	7:28	Frontera	0			Dirt/Leaves/Twigs
7/1/2009	R	3	7:31	Calle Cuarda	5			Dirt/Leaves/Twigs
7/1/2009	R	3	7:33	Calle Paisana	2			Dirt/Leaves/Twigs
7/1/2009	R	3	7:35	Calla Cuarda	8			Dirt/Leaves/Twigs
7/1/2009	R	3	7:37	Calle Burro	0			Dirt/Leaves/Twigs
7/1/2009	R	3	7:38	Frontera	5			Dirt/Leaves/Twigs
7/1/2009	R	3	7:39	Luego	0			Dirt/Leaves/Twigs
7/1/2009	R	3	7:39	Macho	5			Dirt/Leaves/Twigs
7/1/2009	R	3	7:41	Luego	2			Dirt/Leaves/Twigs
7/1/2009	R	3	7:42	Sorpreso	2			Dirt/Leaves/Twigs
7/1/2009	R	3	7:42	Frontera	0			Dirt/Leaves/Twigs
7/1/2009	R	3	7:43	Gancho	3			Dirt/Leaves/Twigs

**CITY OF SAN CLEMENTE
STREET SWEEPING DEBRIS COLLECTION STUDY
2009-CYCLE 1**

E = Early Morning, R = Residential, P = Posted

Date	Freq.	Route #	Time	Street Name	# Parked Vehicles	Debris (weight)	Debris (volume)	Debris Composition
7/1/2009	R	3	7:47	Calle Chueca	3			Dirt/Leaves/Twigs
7/1/2009	R	3	7:47	Visa Chueca	1			Dirt/Leaves/Twigs
7/1/2009	R	3	7:48	Calle Chueca	1			Leafs/Pine Cones
7/1/2009	R	3	7:50	Calle Guacho	8			Dirt/Leafs
7/1/2009	R	3	7:56	Calle Frontrea	0			Leafs
7/1/2009	R	3	7:58	Calle Amigo	3			Leafs
7/1/2009	R	3	8:05	Calle Descanso	7			Leafs
7/1/2009	R	3	8:06	Calle Amigo	0			Twigs
7/1/2009	R	3	8:12	Frontera	4			Leafs/Rocks/Dirt
7/1/2009	R	3	8:16	Calle Embogadura	5			Rocks/Leafs
7/1/2009	R	3	8:18	Fierros	3			Rock/Leafs
7/1/2009	R	3	8:21	Calle Ganadero	5			Paper/Dirt/Rock
7/1/2009	R	3	8:22	Calle Frontera	0			Twigs/Leafs
7/1/2009	R	3	8:22	Calle Juarez	0			
7/1/2009	R	3	8:25	Calle Beranda	3			Rock Dirt
7/1/2009	R	3	8:27	Calle Juarez	0			Plastic cups/Leafs
7/1/2009	R	3	8:28	Via Juarez	2			
7/1/2009	R	3	8:30	Calle Juarez	4			Leafs
7/1/2009	R	3	8:32	Calle Guadalajara	0			Sticks/Pine Cones/Leafs
7/1/2009	R	3	8:34	Calle Hidalgo	0			leafs/Rocks
7/1/2009	R	3	8:36	Via Hidalgo	3			
7/1/2009	R	3	8:37	Calle Hidalgo	13			Leafs/Rocks
7/1/2009	R	3	8:39	Calle Guadalajara	0			
7/1/2009	R	3	8:40	Calle Corral	3			Leafs
7/1/2009	R	3	8:44	Calle Reata	4			Dirt/Leafs
7/1/2009	R	3	8:44	Calle Guadalajara	3			
7/1/2009	R	3	8:46	Calle Cumbre	4			Rock/Leafs
7/1/2009	R	3	8:50	Calle Vallarta	4			Pine Cones/Leafs
7/1/2009	R	3	8:52	Acantilado	3			Trash/Rocks
7/1/2009	R	3	9:01	Calle Vallarta (Trees get in the way	12			Trash/Leafs
7/1/2009	R	3	9:06	De Los Mares	14			Rocks/Leafs/Newspaper
7/1/2009	R	3	9:10	Calle Nuevo	3			Leafs
7/1/2009	R	3	9:15	Amapok	7			Leafs
7/1/2009	R	3	9:17	Via Morada	1			Leafs
7/1/2009	R	3	9:18	Calle Nuevo	1			Leafs
7/1/2009	R	3	9:25	Camino De Los mares	5			Trash/Mud/Leafs
7/1/2009	R	3	9:26	Calle Vallarta	2			Rock/Leafs
7/1/2009	R	3	9:29	Calle Amdole	5			Twigs/Leafs
7/1/2009	R	3	9:32	Calle Brisa	11			Dirt/Leafs
7/1/2009	R	3	9:32	Calle Contenta	7			Grass/Trash
7/1/2009	R	3	9:34	Calle Vallarta	1			Leafs/Pine Cones
7/1/2009	R	3	9:35	Calle Dulce	5			Dirt/Leafs
7/1/2009	R	3	9:40	Calle Esteban	16			Leafs
7/1/2009	R	3	9:46	Calle Guadalajara (Trees in Way)				Leafs
7/1/2009	R	3	9:51	Calle Biedras				Leafs
7/1/2009	R	3	9:52	Calle Belota (Construction)				Twigs
					457	2.25	3	
7/1/2009	R	11	8:55	Trafalger	9			Dirt
7/1/2009	R	11	9:00	S. Ola Vista	15			Dirt
7/1/2009	R	11	9:03	Esplande	26			Leafs
7/1/2009	R	11	9:06	Calle Canchita	4			Dirt, Leafs
7/1/2009	R	11	9:07	Vista Marina	9			Leafs
7/1/2009	R	11	9:16	La Rambla	0			Leafs
7/1/2009	R	11	9:18	Poco Paseo	10			Dirt
7/1/2009	R	11	9:20	Calle Toledo	11			Leafs

**CITY OF SAN CLEMENTE
STREET SWEEPING DEBRIS COLLECTION STUDY
2009-CYCLE 1**

E = Early Morning, R = Residential, P = Posted

Date	Freq.	Route #	Time	Street Name	# Parked Vehicles	Debris (weight)	Debris (volume)	Debris Composition
7/1/2009	R	11	9:25	Christobo Ln.	0			Dirt
7/1/2009	R	11	9:32	Ave. Gariota	12			Leafs
7/1/2009	R	11	9:35	Ave Valencia	6			Trash
7/1/2009	R	11	9:38	Ave. Princesa	13			Leafs
7/1/2009	R	11	9:42	Valencia	22			Dirt
7/1/2009	R	11	9:45	W. Gariola	15			Leafs, Dirt
7/1/2009	R	11	9:49	Ave. Cordora	19			Dirt, Leafs
7/1/2009	R	11	9:55	N. Cristobal	0			Leafs
7/1/2009	R	11	10:00	Ave. Barcelona	13			Leafs
7/1/2009	R	11	10:05	Taflaga	23			Leafs
7/1/2009	R	11	10:00	Santa Ola Vista	11			Dirt
7/1/2009	R	11	10:14	Ave. Princesa	14			Dirt
7/1/2009	R	11	10:21	Ave. Valencia	9			Dirt, Leafs
7/1/2009	R	11	10:24	Del Presedento	0			Leafs
7/1/2009	R	11	10:27	Ave. Gaviota	16			Leafs
7/1/2009	R	11	10:33	Cordoba	29			Dirt
7/1/2009	R	11	10:46	De Christobale	16			Dirt
7/1/2009	R	11	10:52	Santiago	23			Leafs
7/1/2009	R	11	10:56	Esterade	21			Leafs
7/1/2009	R	11	11:01	Ave. Barcelona	25			Dirt, Leafs
7/1/2009	R	11	11:09	Cadiz	17	2.25	4	Leafs
					388	2.25	4	
7/2/2009	E	4	3:57	Avenida Pico				Rocks, Trash, Dirt, Leafs
7/2/2009	E	4	4:03	Molinos				Trash, Dirt
7/2/2009	E	4	4:03	Rincon				Trah, Dirt
7/2/2009	E	4	4:05	Calle Valle	4			Trash, Dirt
7/2/2009	E	4	4:07	Calle De Los Molinos				
7/2/2009	E	4	4:11	Calle Bonito				Twigs, Dirt, Leafs
7/2/2009	E	4	4:14	Alley (Los Abreros)				Dirt
7/2/2009	E	4	4:21	De la Estrella (Const.)				
7/2/2009	E	4	4:26	Calle De Industrias				Trash,Dirt
7/2/2009	E	4	4:30	Via Pico Plza.				Trash, Dirt
7/2/2009	E	4	4:36	Presidio				Trash,Rock,Dirt,Leaves
7/2/2009	E	4	4:44	Navarro Los Molinos	13			Trash, Dirt
7/2/2009	E	4	5:15	Avenida La Pata				Grass,Trash, Leafs, Dirt.
7/2/2009	E	4	5:16	Via Callejon				Dirt, Rock,Leafs
7/2/2009	E	4	3:35	El Camino Real	0			Dirt
7/2/2009	E	4	3:40	Camino Capistrano	0			Dirt
7/2/2009	E	4	3:45	Camino De Estrella/ Medians	0			Dirt
7/2/2009	E	4	4:01	Camino De Las Mores/ Medians	0			Dirt
7/2/2009	E	4	4:14	Camino De Estrella	0			Dirt
7/2/2009	E	4	4:17	Camino Del estrella	0			Dirt
7/2/2009	E	4	4:26	Camino Capistrano	0			Dirt
7/2/2009	E	4	4:29	El Camino Real	4			Dirt
7/2/2009	E	4	4:52	El Camino Real	0			Dirt
7/2/2009	E	4	4:57	Avenida Presidido	0			Dirt
7/2/2009	E	4	5:08	Palizada	0			Dirt
7/2/2009	E	4	5:11	Avenida Marquita	0			Dirt
7/2/2009	E	4	5:13	Mariposa	0			Dirt
7/2/2009	E	4	5:16	Escalones	1			Dirt
7/2/2009	E	4	5:17	Canada				Dirt
7/2/2009	E	4	5:18	El Portal				Dirt
7/2/2009	E	4	5:24	Calle lago	5			Dirt
7/2/2009	E	4	5:32	El Camino Real	9			Dirt

CITY OF SAN CLEMENTE
STREET SWEEPING DEBRIS COLLECTION STUDY
2009-CYCLE 1

E = Early Morning, R = Residential, P = Posted

Date	Freq.	Route #	Time	Street Name	# Parked Vehicles	Debris (weight)	Debris (volume)	Debris Composition
7/2/2009	E	4	5:38	Avenida Pico	24			Dirt
7/2/2009	E	4	6:07	Avenida Mogdelena	10			Dirt
7/2/2009	E	4	6:15	Del mar	1			Dirt
7/2/2009	E	4	6:26	Bernardo Lot	1			Dirt
7/2/2009	E	4	6:27	Granada Lot	7			Dirt
7/2/2009	E	4	6:29	Ola Vista	8			Dirt
7/2/2009	E	4	6:31	Cabrillo Lot	0			Dirt
7/2/2009	E	4	6:35	Pier Bowl	27			Dirt
7/2/2009	E	4	6:38	Boca de La Playa	7			Dirt
7/2/2009	E	4	6:51	Calle Deschema	0			Dirt
7/2/2009	E	4	6:54	Camino Capistrano	21			Dirt
7/2/2009	E	4	6:59	Avenida Salvador	1			Dirt
7/2/2009	E	4	7:38	Vista Vacunda	2			Dirt
7/2/2009	E	4	7:51	Vista alceda	1			Dirt
7/2/2009	E	4	7:52	Vista Valencia	21			Dirt
7/2/2009	E	4	7:54	Vista Gayenta	1			Dirt
7/2/2009	E	4	7:56	Vista Cantura	2			Dirt
7/2/2009	E	4	7:59	Vista Vacunda	1	6.5	5.25	Dirt
					171	6.5	5.25	
7/2/2009	R	4	6:35	La Cuesta	6			Mud, Trash, Leafs
7/2/2009	R	4	6:35	El Oriente	7			Twigs, Leafs
7/2/2009	R	4	6:38	Caballeros				Twigs, Leafs
7/2/2009	R	4	6:42	De La Paz, la Cuesta	19			Mud, Twigs, Rocks, Lea
7/2/2009	R	4	7:06	Camino San Clemente	6			Dirt, Mud, leafs, Rocks
7/2/2009	R	4	7:09	Via Socorro	8			Leafs, Rock
7/2/2009	R	4	7:13	Via Ballena	12			Trash, Rock, Dirt, Leaf
7/2/2009	R	4	7:22	Via San Andres	13			Dirt, Rock, Leafs
7/2/2009	R	4	7:35	Calle Tinaja	6			
7/2/2009	R	4	7:37	Via Senda	6			Rock , Leaf
7/2/2009	R	4	7:40	Via Cascadita	9			Leafs, Trash
7/2/2009	R	4	7:46	San Clemente				Rocks , Leafs
7/2/2009	R	4	7:55	Via Caballeros, De la Paz				Leafs, Trash, Dirt
7/2/2009	R	4	7:56	N. La Esperanza				
7/2/2009	R	4	7:58	El Levante				Rock, Leaf, Dirt
7/2/2009	R	4	7:59	Pizarro				Leafs, Dirt
7/2/2009	R	4	8:06	Terraza Vista Bahia	3			Trash Dirt
7/2/2009	R	4	8:10	Patio Del Oro	8			leafs, Dirt
7/2/2009	R	4	8:11	Calle Bella Loma	2			leafs, Dirt
7/2/2009	R	4	8:15	Calle Seguro	4			Dirt, Leafs
7/2/2009	R	4	8:20	San Carlos	5			Rock Leafs
7/2/2009	R	4	8:21	Calle Cortez	10			Trash, Leafs
7/2/2009	R	4	8:21	Calle Balboa	12			Rock, Dirt, Leafs
7/2/2009	R	4	8:30	Calle De Ananza	5			Rock, Leaf
7/2/2009	R	4	8:34	Calle Sonora	19			Rock , Leafs
7/2/2009	R	4	9:34	La Cuesta				Trash, Dirt, Leafs
7/2/2009	R	4	9:45	Avenida Presidio	7			Dirt, Leafs
7/2/2009	R	4	9:58	De la Estrella	24			Rock, Leafs
7/2/2009	R	4	10:00	Calle Redondel	26			Dirt, Leafs
7/2/2009	R	4	10:07	Sierra	29			Trash, Dirt
7/2/2009	R	4	10:12	Las Flores	11			Leafs
7/2/2009	R	4	10:15	El Oriente	3			Leafs
7/2/2009	R	4	10:17	El Campo	10			Dirt, Rocks
7/2/2009	R	4	10:19	La Placencia	4			Dirt
7/2/2009	R	4	10:21	Revuelta	4			Leaf, Dirt
7/2/2009	R	4		Redondel	13	5.25	4.55	leaf, Dirt
					291	5.25	4.55	

**CITY OF SAN CLEMENTE
STREET SWEEPING DEBRIS COLLECTION STUDY
2009-CYCLE 1**

E = Early Morning, R = Residential, P = Posted

Date	Freq.	Route #	Time	Street Name	# Parked Vehicles	Debris (weight)	Debris (volume)	Debris Composition
7/6/2009	E	1	3:31	Avenida Pico				leafs, Trash, Dirt
7/6/2009	E	1	3:55	De Los Molinos				Dirt
7/6/2009	E	1	3:57	Rincon				Trash, Dirt
7/6/2009	E	1	3:59	Calle De los Molinos	7			Dirt, leafs
7/6/2009	E	1	4:00	Calle Valle	3			Dirt, leafs
7/6/2009	E	1	4:07	Calle Bonito				Trash Dirt Leafs
7/6/2009	E	1	4:13	Los Obreros				Dirt, trash
7/6/2009	E	1	4:15	De la Estrella				Trash, Dirt, Leafs
7/6/2009	E	1	4:24	Avenida Navarro	16			Trash, Dirt
7/6/2009	E	1	4:25	Calle De industias				Leaf, Dirt
7/6/2009	E	1	4:26	Via Pico Plaza				Trash, Dirt
7/6/2009	E	1	4:35	Presido				Trash, Dirt, Leafs
7/6/2009	E	1	5:15	Avenida La Pata				Trash, Dirt, Leafs
7/6/2009	E	1	5:20	Avenida Callejon	1			Leafs
7/6/2009	E	1	5:27	Calle Iglesia				Leafs, Dirt
7/6/2009	E	1	5:30	Calle Pintaresco	7			Trash, Dirt, leafs
7/6/2009	E	1	5:36	Avenida Fabricante				Dirt, Leafs
7/6/2009	E	1	6:20	Calle Aliacante	1			Leafs
7/6/2009	E	1	6:26	Calle Baltido				Dirt
7/6/2009	E	1	6:37	Calle Celosial				Trash, Leafs
7/6/2009	E	1	6:55	Calle Avanzado				Dirt, leafs
7/6/2009	E	1	6:46	Corte Trabucco				Dirt, Leafs
					35			
7/6/2009	R	1	7:15	Presidio	2			Leafs
7/6/2009	R	1	7:16	Calle Escuela	9			Dirt, Leafs
7/6/2009	R	1	7:18	Calle Del Juego	7			Rock
7/6/2009	R	1	7:19	Calle Salida	16			Dirt, Leafs
7/6/2009	R	1	7:21	Calle Sandia	2			Rock, Leafs
7/6/2009	R	1	7:26	Calle Miguel	5			Rock, leafs
7/6/2009	R	1	7:27	Calle Empalme	3			Leafs
7/6/2009	R	1	7:31	Calle Fiesta	2			Leafs
7/6/2009	R	1	7:33	Calle Neblina				Dirt, Rock, Leafs
7/6/2009	R	1	7:35	Calle Pueblo	2			Dirt, Rock, Leafs
7/6/2009	R	1	7:36	Calle Familia	1			Rock, Leafs
7/6/2009	R	1	7:38	Calle Villarial	9			leafs
7/6/2009	R	1	7:39	Calle Delicada				Leafs
7/6/2009	R	1	7:41	Calle Felicidad				Dirt Leaf
7/6/2009	R	1	7:42	Calle Dorado	9			Rock, leaf
7/6/2009	R	1	7:46	Calle Rica	6			Rock, Leaf
7/6/2009	R	1	7:47	Avenida Presidio	29			Rock Dirt
7/6/2009	R	1	7:50	Calle Mendoza	4			Rock, Dirt
7/6/2009	R	1	7:54	Calle Delicada	9			Leafs
7/6/2009	R	1	8:04	Calle Empalme	18			Rock, Leaf
7/6/2009	R	1	8:08	Calle Fiesta	9			Rock, Leaf
7/6/2009	R	1	8:12	Calle Neblina	8			Rock, Leaf, Dirt
7/6/2009	R	1	8:19	Calle Pueblo	13			Dirt, Leafs
7/6/2009	R	1	8:28	Calle Familia	13			Rock,Dirt
7/6/2009	R	1	8:29	Calle Robles	5			Dirt, Leafs
7/6/2009	R	1	8:57	Calle Villario	1			Dirt, Leafs
7/6/2009	R	1	9:00	Calle Delicada	5			Dirt, Leafs
7/6/2009	R	1	9:06	Calle Felicidad	14			Dirt, Leafs
7/6/2009	R	1	9:11	Calle Pescador	8			Dirt, Leafs
7/6/2009	R	1	9:22	Calle Dorado	23			Leafs, Dirt, Grass
7/6/2009	R	1	9:36	Calle Miguel	1			Dirt, Leafs
7/6/2009	R	1	9:37	Calle Rico	1			Leafs

**CITY OF SAN CLEMENTE
STREET SWEEPING DEBRIS COLLECTION STUDY
2009-CYCLE 1**

E = Early Morning, R = Residential, P = Posted

Date	Freq.	Route #	Time	Street Name	# Parked Vehicles	Debris (weight)	Debris (volume)	Debris Composition
						9	7.8	
					234	9	7.8	
7/7/2009	E	2	3:30	Calle Amanecer				
7/7/2009	E	2	3:40	Calle Negocio	1			Dirt, Leaf
7/7/2009	E	2	3:45	Calle Trepadora				Dirt, Leaf
7/7/2009	E	2	3:53	Cordilvera				Trash, Leafs
7/7/2009	E	2	3:58	Recodo	6			Dirt, Leafs
7/7/2009	E	2	4:04	Sombra				Dirt, Leafs
7/7/2009	E	2	4:18	Camino Vera Cruz				Dirt, Leafs
7/7/2009	E	2	4:23	Avenida La Pata				Dirt, Leafs
7/7/2009	E	2	4:31	Avenida Vista Hermosa				Dirt, Leafs, Trash
7/7/2009	E	2	4:36	Camino Vera Cruz				Dirt, Trash
7/7/2009	E	2	5:52	Via Seratea	1			Leaf, Dirt
7/7/2009	E	2	5:54	Calle Companero				Trash, Dirt
7/7/2009	E	2	5:58	Avenida Talega				Leaf, Dirt
7/7/2009	E	2	6:25	Calle Portofino				Leaf, Dirt
7/7/2009	E	2	6:30	Calle Saluda				Leaf, Dirt
7/7/2009	E	2	6:39	Camino La Pedriza	1			Trash, Leaf, Dirt
7/7/2009	E	2	7:00	Altea				Dirt, Leafs
7/7/2009	E	2	3:30	El Camino Real				Dirt
7/7/2009	E	2	3:41	Camio De Estrella	0			Dirt
7/7/2009	E	2	3:49	El Camino Real	0			Dirt
7/7/2009	E	2	4:26	Avenida Presidio	0			Dirt
7/7/2009	E	2	4:32	Avenida Palizada	0			Dirt
7/7/2009	E	2	4:43	Florenca	0			Dirt
7/7/2009	E	2	4:46	De La Crulla	0			Dirt
7/7/2009	E	2	4:47	Avenida Aregon	0			Dirt
7/7/2009	E	2	4:48	El Portall	0			Dirt
7/7/2009	E	2	4:52	Espallones	1			Dirt
7/7/2009	E	2	4:53	Mariposa	3			Dirt
7/7/2009	E	2	4:54	Marquita	0			Dirt
7/7/2009	E	2	4:56	Palizada	0			Dirt
7/7/2009	E	2	4:57	Miramar	0			Dirt
7/7/2009	E	2	5:00	Cabrillo Lot	7			Dirt
7/7/2009	E	2	5:04	Del Mar	5			Dirt
7/7/2009	E	2	5:15	Granada Lot	6			Dirt
7/7/2009	E	2	5:18	Victoria	4			Dirt
7/7/2009	E	2	5:19	Rosa	2			Dirt
7/7/2009	E	2	5:20	Mateo	11			Dirt
7/7/2009	E	2	5:22	Acgoan	18			Dirt
7/7/2009	E	2	6:06	Cazador	26			Dirt
7/7/2009	E	2	6:19	Camino Mira Costa	13			Dirt
7/7/2009	E	2	6:27	Camino De Los Mores				Dirt
7/7/2009	E	2	7:05	Calle Agua				Dirt
7/7/2009	E	2	7:10	Camino De Estrella				Dirt
7/7/2009	E	2	7:15	Camino Mira Costa	32			Leaves
7/7/2009	E	2	7:44	S. Ola Vista	5			Dirt
7/7/2009	E	2	8:07	Del Presidente	0			Dirt
7/7/2009	E	2	8:22	De Los Cabos Marinos	12			Dirt
					154	4.25	3.75	
7/7/2009	R	2	7:24	Del Cerro				Trash, Leaf, Dirt
7/7/2009	R	2	7:45	Vista Montana				Twigs, Leafs
7/7/2009	R	2	7:49	Aguila	1			Leafs
7/7/2009	R	2	8:03	Calle Pastadero	14			Dirt, Leafs

**CITY OF SAN CLEMENTE
STREET SWEEPING DEBRIS COLLECTION STUDY
2009-CYCLE 1**

E = Early Morning, R = Residential, P = Posted

Date	Freq.	Route #	Time	Street Name	# Parked Vehicles	Debris (weight)	Debris (volume)	Debris Composition
7/7/2009	R	2	8:28	Vista Montana				Trash, Leafs
7/7/2009	R	2	8:32	Calle Iglesia				Trash, Leafs
7/7/2009	R	2	8:43	Avenida Salvador	36			Leafs
7/7/2009	R	2	8:45	Calle De Soto	21			Dirt, Leafs
7/7/2009	R	2	8:48	Calle Nina	6			Dirt, Leafs
7/7/2009	R	2	8:54	Avenida Teresa	15			Trash, Twigs, Leafs
7/7/2009	R	2	8:58	Avenida Colimbo	8			Dirt, Leafs
7/7/2009	R	2	9:07	Calle Malaguena	4			Dirt, Leafs
7/7/2009	R	2	9:14	Calle Monserat	11			Rock
7/7/2009	R	2	9:15	Calle Dulcinea	10			Dirt, Leafs
7/7/2009	R	2	9:20	Calle Tibidabo				Dirt, Leafs
					126	7.5	6.5	
7/7/2009	R	10	8:25	Calle Marina	14			Leaves
7/7/2009	R	10	8:28	S. Ola Vista				Leaves
7/7/2009	R	10	8:29	Calle Senena	12			Dirt
7/7/2009	R	10	8:34	Cabos marinos	2			Leaves
7/7/2009	R	10	8:35	Roca Vista	12			Leaves
7/7/2009	R	10	8:35	Primavera	16			Leaves
7/7/2009	R	10	8:41	Calle Casuen	8			
7/7/2009	R	10	8:42	Lobos marinos				Leaves
7/7/2009	R	10	8:45	De Los Alamos	33			Dirt
7/7/2009	R	10	9:00	Del Camarero	9			
7/7/2009	R	10	9:10	S. Ola Vista				Leaves
7/7/2009	R	10	9:12	San Antonio	15			
7/7/2009	R	10	9:38	Majorca				Dirt
7/7/2009	R	10	9:38	Las Palmas	10			Dirt
7/7/2009	R	10	9:40	Ave. La Costa	13			Leaves
7/7/2009	R	10	9:42	Plaza a la Playa	10			Dirt
7/7/2009	R	10	9:47	Monte Cristo	14			Dirt
7/7/2009	R	10	9:48	Calle Muneco	1			Leaves
7/7/2009	R	10	9:52	De al Nievera	3			Leaves
7/7/2009	R	10	9:57	Majorca	2			Dirt
7/7/2009	R	10	10:00	Montalvo	25			Dirt
7/7/2009	R	10	10:10	Montalvo	20			Dirt
7/7/2009	R	10	10:15	Calafia	17			Leaves
7/7/2009	R	10	10:17	S. Ola Vista	2			Dirt
7/7/2009	R	10	10:20	Del Pacifico	1			Leaves
7/7/2009	R	10	10:20	Avenida Callecito	2			Leaves
7/7/2009	R	10	10:21	Del Pacifico	9			Leaves
7/7/2009	R	10	10:24	S. Ola Vista	0			Leaves
7/7/2009	R	10	10:25	De La Serenata	12			Leaves
7/7/2009	R	10	10:28	S. Ola Vista				Dirt
7/7/2009	R	10	10:29	Avenida Junipero	16			Dirt
7/7/2009	R	10	10:35	Cornelillo	22			Leaves
7/7/2009	R	10	10:38	Avenida Ramona	17			Dirt
7/7/2009	R	10	10:43	Allessardo	19			Leaves
7/7/2009	R	10	10:53	San Antonio	22			Leaves
7/7/2009	R	10	10:59	Lobos Marinos	9			Leaves
						8.75	6.25	
					367	8.75	6.25	
7/8/2009	E	3	4:00	Avenida Pico				Leafs,Trash, Dirt
7/8/2009	E	3	4:05	Via Pico Plaza				Leaf, Trash, Dirt
7/8/2009	E	3	4:21	Calle Del Cerro				Dirt, Leafs
7/8/2009	E	3	4:39	Camino Vera Cruz				Dirt,Leafs
7/8/2009	E	3	4:45	Avenida La Pata				Dirt,Leafs

**CITY OF SAN CLEMENTE
STREET SWEEPING DEBRIS COLLECTION STUDY
2009-CYCLE 1**

E = Early Morning, R = Residential, P = Posted

Date	Freq.	Route #	Time	Street Name	# Parked Vehicles	Debris (weight)	Debris (volume)	Debris Composition
7/8/2009	E	3	4:48	Avenida Vista Hermosa				Dirt, Trash
7/8/2009	E	3	5:58	Talega				Leafs, Trash
7/8/2009	E	3	6:40	Richard Memorial Park	1			Trash, Leafs
						3	2.6	
7/8/2009	E	3	3:43	City Yard	9			Dirt
7/8/2009	E	3	4:30	Metro Linda Yard	4			
7/8/2009	E	3	4:35	North Beach Lots				
7/8/2009	E	3	4:40	Beach Club Lots				
7/8/2009	E	3	4:48	Granada Lot	3			
7/8/2009	E	3	4:50	Del mar	6			
7/8/2009	E	3	5:07	City Hall	11			
7/8/2009	E	3	5:13	Golf Course Lot	4			Leaves
7/8/2009	E	3	5:41	Del Mar Lots	0			
7/8/2009	E	3	6:01	Avenida Del Mar	17			
7/8/2009	E	3	6:09	Parque Del mar	17			
7/8/2009	E	3	6:25	Ola Vista	2			
7/8/2009	E	3	6:30	Linda Lot Lanes	5			
7/8/2009	E	3	6:50	Boys & Girls Club Lots	0			
7/8/2009	E	3	7:03	San Gorgonio Park	1			
7/8/2009	E	3	7:35	Talega Park	1			Leaves
7/8/2009	E	3	7:43	Tierra Grande Park	3			Leaves
7/8/2009	E	3	7:56	Christiana Park	7			Leaves
						4	3.25	
					91	7	5.85	
7/8/2009	P	7-A	9:04	Calle Las Bolas				
7/8/2009	P	7-A	9:09	Avenida Florencia	7			Dirt, Weeds
7/8/2009	P	7-A	9:11	Avenida Hacienda	2			Trash, Leafs
7/8/2009	P	7-A	9:13	Calle Sacramento				Leafs
7/8/2009	P	7-A	9:16	Avenida Florencia	7			Dirt, Leafs
7/8/2009	P	7-A	9:17	Buena Vista	4			Leafs
7/8/2009	P	7-A	9:18	Dije	2			Dirt, Leafs
7/8/2009	P	7-A	9:23	Mirador	3			Trash, Leafs
7/8/2009	P	7-A	9:25	Del Reposo	3			Leafs
7/8/2009	P	7-A	9:28	Avenida De La Grulla	10			Dirt, Leafs
7/8/2009	P	7-A	9:36	Calle Puente	5			Leafs
7/8/2009	P	7-A	9:40	Pelayo	8			Leafs
7/8/2009	P	7-A	9:49	Avenida Aregon	10			Trash, Leafs
7/8/2009	P	7-A	10:00	El Portal	1			Leafs
7/8/2009	P	7-A	10:01	El Prado				
7/8/2009	P	7-A	10:14	Canada				Trash, Dirt, Leafs
7/8/2009	P	7-A	10:16	Del Poniente	3			Leafs
7/8/2009	P	7-A	10:45	El Portal	2			Leafs, Trash, Dirt
7/8/2009	P	7-A	10:47	Calle Oso				Trash, Leafs
7/8/2009	P	7-A	10:49	W. Cananda				Trash, Leafs
7/8/2009	P	7-A	10:55	W. Mariposa				Trash, Leafs
7/8/2009	P	7-A	10:58	W. Ane. Escolones	3			Dirt, Leafs
7/8/2009	P	7-A	11:16	La Paloma	8			Dirt, Leafs
7/8/2009	P	7-A	11:25	W. Marquita	6			Dirt, Leafs
7/8/2009	P	7-A	11:35	Ave. De La Estrella	3			Dirt, Leafs
7/8/2009	P	7-A	11:37	La Ronda				Trash, Dirt, Leafs
7/8/2009	P	7-A	11:40	Chiquita				Leafs
7/8/2009	P	7-A	11:42	E. Camada				Trash, Leafs
7/8/2009	P	7-A	11:45	E. Escalones	1			Leaf, Dirt, Trash
7/8/2009	P	7-A	11:46	E. Mariposa	1			Leaf, Dirt
7/8/2009	P	7-A	11:48	E. Mariquita				Leaf, Dirt
						4.5	3.9	

**CITY OF SAN CLEMENTE
STREET SWEEPING DEBRIS COLLECTION STUDY
2009-CYCLE 1**

E = Early Morning, R = Residential, P = Posted

Date	Freq.	Route #	Time	Street Name	# Parked Vehicles	Debris (weight)	Debris (volume)	Debris Composition
					89	4.5	3.9	
7/8/2009	P	15-B	9:00	Palizada	5			Leaves
7/8/2009	R	15-B	9:07	Lona Lane	0			Leaves
7/8/2009	R	15-B	9:09	Palizada	10			Leaves
7/8/2009	R	15-B	9:17	Arenso	8			Leaves
7/8/2009	R	15-B	9:20	Avenida Miramar	6			Leaves
7/8/2009	R	15-B	9:27	Avenida Serra	3			Leaves
7/8/2009	R	15-B	9:33	Ola Vista	1			Leaves
7/8/2009	R	15-B	9:37	Encinio Ln.	0			Leaves
7/8/2009	R	15-B	9:39	Palizada	8			Leaves
7/8/2009	R	15-B	9:40	Corto Ln.	0			Leaves
7/8/2009	R	15-B	9:41	Avenida Granada	3			Leaves
7/8/2009	R	15-B	9:48	Calle Sevilla	1			Leaves
7/8/2009	R	15-B	9:51	Avenida Cabrillo	2			Leaves
7/8/2009	R	15-B	10:03	Del Mar Lots	1			Leaves
7/8/2009	R	15-B	10:03	Granada	2			Leaves
7/8/2009	R	15-B	10:06	Acebo	4			Leaves
7/8/2009	R	15-B	10:20	Santa Barbara	7			Leaves
7/8/2009	R	15-B	10:20	Avenida Rosa				Leaves
7/8/2009	R	15-B	10:33	S. Ola Vista				Leaves
7/8/2009	R	15-B	10:36	Avenida Rosa				Leaves
						5.25	3.75	
					61	5.25	3.75	
7/9/2009	P	8-A	9:00	Calle Mirador	4			Trash, Leafs
7/9/2009	P	8-A	9:12	Avenida Florencia	1			Leafs
7/9/2009	P	8-A	9:13	Calle Las Bolas	8			Trash, Leafs
7/9/2009	P	8-A	9:19	Calle Sacramento	3			Dirt,Trash, Leafs
7/9/2009	P	8-A	9:20	Calle Colina	1			leafs
7/9/2009	P	8-A	9:22	Buena Vista	8			Trash, Leafs, Dirt
7/9/2009	P	8-A	9:26	Dije	1			Trash, Leafs
7/9/2009	P	8-A	9:28	Florencia	0			Rock, Dirt, Leafs
7/9/2009	P	8-A	9:34	Hacienda	1			Leafs
7/9/2009	P	8-A	9:37	Da La Grulla	0			Trash, Leafs
7/9/2009	P	8-A	9:38	Del Reposo	1			Trash, Rock, leafs
7/9/2009	P	8-A	9:46	Pelayo	4			Trash, Leafs
7/9/2009	P	8-A	9:50	Calle Puente	7			Rock, Leafs
7/9/2009	P	8-A	9:55	Aragon	2			Trash, Dirt, Leafs
7/9/2009	P	8-A	10:02	W. El Portal	1			Trash, Leafs
7/9/2009	P	8-A	10:06	Calle Oso	0			Trash, Leafs
7/9/2009	P	8-A	10:19	Del Ponienete	2			Trash, Grass, Leafs
7/9/2009	P	8-A	10:24	W. Canada	3			Trash, Dirt
7/9/2009	P	8-A	10:29	W. Escalones	4			Leafs, Trash, Dirt
7/9/2009	P	8-A	10:42	W. Mariposa	7			Trash,Dirt
7/9/2009	P	8-A	10:50	W. Marquita	5			Leaf, Dirt
7/9/2009	P	8-A	10:57	La Paloma	0			Trash, Dirt, Leafs
7/9/2009	P	8-A	11:25	El Portal	0			Leafs
7/9/2009	P	8-A	11:25	El Ronda	1			Trash, Leafs
7/9/2009	P	8-A	11:29	Chiquita	1			Dirt, Leaf
7/9/2009	P	8-A	11:30	E. Portal	1			Leaf
7/9/2009	P	8-A	11:34	E. Canada	0			Trash, Leafs
7/9/2009	P	8-A	11:39	E. Escalones	0			Trash, Leafs
7/9/2009	P	8-A	11:40	Avenida De La Estrella	0			Leaf
7/9/2009	P	8-A	11:40	E. Mariposa	0			Leaf
7/9/2009	P	8-A	11:45	E. Marquita	2			Leafs
					68	4.5	3.9	

**CITY OF SAN CLEMENTE
STREET SWEEPING DEBRIS COLLECTION STUDY
2009-CYCLE 1**

E = Early Morning, R = Residential, P = Posted

Date	Freq.	Route #	Time	Street Name	# Parked Vehicles	Debris (weight)	Debris (volume)	Debris Composition
7/9/2009	P	16-B	9:07	Avenida Palizada	0			Leaves
7/9/2009	P	16-B	9:09	N Ola Vista	2			Dirt
7/9/2009	P	16-B	9:12	W. Avenida Palizada	0			Leaves
7/9/2009	P	16-B	9:15	Loma lane	0			Dirt
7/9/2009	P	16-B	9:15	Palizada	1			Dirt
7/9/2009	P	16-B	9:19	Miramar	1			Dirt
7/9/2009	P	16-B	9:21	Serra	4			Dirt
7/9/2009	P	16-B	9:27	Cabrillo	2			Trash
7/9/2009	P	16-B	9:32	Granada	2			Leaves
7/9/2009	P	16-B	9:48	Arenoso	0			Dirt
7/9/2009	P	16-B	9:52	Granada	0			Dirt
7/9/2009	P	16-B	9:57	Rosa	4			Leaves
7/9/2009	P	16-B	10:17	Victoria	7			Dirt
7/9/2009	P	16-B	10:21	N. Ola Vista	1			Dirt
7/9/2009	P	16-B	10:29	Santa Barbara	2			
7/9/2009	P	16-B	10:34	Victoria	4			
7/9/2009	P	16-B	10:38	Elena	2			
7/9/2009	P	16-B	10:40	Cazador	2			
7/9/2009	P	16-B	10:46	Corona	0			
7/9/2009	P	16-B	10:46	Santa Ana	1			
7/9/2009	P	16-B	10:48	Capistrano	3			
7/9/2009	P	16-B	10:57	Monterey	0			
7/9/2009	P	16-B	10:59	Ave. Monterey	0			
7/9/2009	P	16-B	11:01	S.Ola Vista	1			
7/9/2009	P	16-B	11:03	Madrid	3			
7/9/2009	P	16-B	11:09	Avenida Algodon	3			
7/9/2009	P	16-B	11:11	Mateo	1			
7/9/2009	P	16-B	11:12	Monterey	1			
					47	5	3	
7/9/2009	E	4	4:50	Avenida Pico	0			Leafs, Trash, Dirt
7/9/2009	E	4	4:53	Los Molinos	5			Rock, Leafs, Dirt
7/9/2009	E	4	4:54	Rincon	1			Dirt
7/9/2009	E	4	5:00	Calle Bonito	0			Leafs, Trash
7/9/2009	E	4	5:02	Calle Valle	0			Trash, Leafs, Dirt
7/9/2009	E	4	5:04	Alley	0			Leafs,Dirt
7/9/2009	E	4	5:08	De La Estrella	0			Leafs,Dirt
7/9/2009	E	4	5:12	Via Pico Plaza	0			Leafs,Dirt
7/9/2009	E	4	5:18	Presidido	0			Leafs,Dirt
7/9/2009	E	4	5:23	Caslle Industrias	1			Trash, Dirt
7/9/2009	E	4	5:26	Calle Navarro	13			Trash, Dirt
7/9/2009	E	4	5:44	Avenida La Pata	0	5.25	4.5	Grass, Trash, Leafs
7/9/2009	E	4	3:35	El Camino Real	0			Dirt
7/9/2009	E	4	4:18	El Camino Real	0			Dirt
7/9/2009	E	4	4:25	Camino Capistrano	0			Dirt
7/9/2009	E	4	4:26	Camino De Estrella	0			Dirt
7/9/2009	E	4	4:59	Camino Capistrano	0			Dirt
7/9/2009	E	4	5:00	El Camino Real	0			Dirt
7/9/2009	E	4	5:16	Magdalena	0			Dirt
7/9/2009	E	4	5:37	El Camino Real	11			Dirt
7/9/2009	E	4	5:43	Presidio	1			Dirt
7/9/2009	E	4	5:46	El Camino Real	0			Dirt
7/9/2009	E	4	5:48	Del Mar	1			Dirt
7/9/2009	E	4	5:49	Del Mar	9			Dirt
7/9/2009	E	4	6:00	Cabrillo Lot	20			Dirt

**CITY OF SAN CLEMENTE
STREET SWEEPING DEBRIS COLLECTION STUDY
2009-CYCLE 1**

E = Early Morning, R = Residential, P = Posted

Date	Freq.	Route #	Time	Street Name	# Parked Vehicles	Debris (weight)	Debris (volume)	Debris Composition
7/9/2009	E	4	6:21	Mariposa	0			Dirt
7/9/2009	E	4	6:25	El Camino Real	0			Dirt
7/9/2009	E	4	6:30	De La Playa	0			Dirt
7/9/2009	E	4	6:38	Deschecha	4			Trash
7/9/2009	E	4	6:37	El Camino Real	0			Dirt
7/9/2009	E	4	7:09	Granada Lot	8			Dirt
7/9/2009	E	4	7:20	Cabrillo Lot	2			Dirt
7/9/2009	E	4	7:24	Cabrillo Lot #2	3			Dirt
7/9/2009	E	4	7:38	Camino Capistrano	3			Leaves
7/9/2009	E	4	7:40	Calle Seville	4			Dirt
					86	5.25	4.5	
7/13/2009	E	1	5:02	Pico Avenue	0			Twigs, trash
7/13/2009	E	1	5:10	Los Molinos	6			Twigs, trash
7/13/2009	E	1	5:11	Rincon	0			Twigs, trash
7/13/2009	E	1	5:12	De La Estrella	1			Twigs, trash
7/13/2009	E	1	5:14	De Los Molinos	0			Twigs, trash
7/13/2009	E	1	5:15	Calle De Los Molinos	11			Twigs, trash
7/13/2009	E	1	5:19	Calle Valle	0			Twigs, trash
7/13/2009	E	1	5:34	Presidio	0			Twigs, trash
7/13/2009	E	1	5:50	Avenida La Pata	0			Twigs, trash
						3.25	3.25	Twigs, trash
7/13/2009	E	1	3:41	El Camino Real	0			Dirt
7/13/2009	E	1	3:49	Camino Capistrano	0			Dirt
7/13/2009	E	1	3:50	El Camino Real	0			Dirt
7/13/2009	E	1	3:56	N. Beach Lots	2			Dirt
7/13/2009	E	1	4:20	Avenida pico	0			Dirt
7/13/2009	E	1	4:24	El Camino Real	0			Dirt
7/13/2009	E	1	4:31	El Camino Real	0			Dirt
7/13/2009	E	1	4:50	El Camino Real	0			Dirt
7/13/2009	E	1	4:55	Christonos	0			Dirt
7/13/2009	E	1	5:05	Magdalena	11			Dirt
7/13/2009	E	1	5:20	Avenida Presidio	0			Dirt
7/13/2009	E	1	5:23	El Camino Real	2			Dirt
7/13/2009	E	1	5:27	Palizado	0			Dirt
7/13/2009	E	1	5:35	El Portal	0			Dirt
7/13/2009	E	1	6:02	El Camino Real	2			Dirt
7/13/2009	E	1	6:05	Del Mar	26			Leafs
7/13/2009	E	1	6:25	Ola Vista	3			Dirt
7/13/2009	E	1	7:10	Victoria St. Lot	0			Dirt
7/13/2009	E	1	7:16	Calle Puente	16			Leafs
7/13/2009	E	1	7:30	Boca De Playa	1			Dirt
7/13/2009	E	1	7:37	Deschecha	1			Dirt
7/13/2009	E	1	7:37	Bievenida	1		2	Leafs
					83	3.25	5.25	
7/13/2009	R	5	7:13	Camino Capistrano	27			Twigs, Dirt, Leafs
7/13/2009	R	5	7:20	Calle Leveta	45			Trash, Leafs
7/13/2009	R	5	7:23	Calle Guymas	25			Trash, Leafs
7/13/2009	R	5	7:29	Calle Borrego	18			Leafs
7/13/2009	R	5	7:31	Camino Alondra	29			Leafs
7/13/2009	R	5	7:33	Calle Quieto	16			Leafs, Dirt
7/13/2009	R	5	7:43	Via Breje	6			Brush, Leafs
7/13/2009	R	5	7:50	La Ventana	11			Dirt, Brush, Leafs
7/13/2009	R	5	8:00	Monte Vista	16			Trash, Dirt, Leafs
7/13/2009	R	5	8:00	Avenida Vaquero	30			Leafs
7/13/2009	R	5	8:01	Via Cascadita	1			Trash

**CITY OF SAN CLEMENTE
STREET SWEEPING DEBRIS COLLECTION STUDY
2009-CYCLE 1**

E = Early Morning, R = Residential, P = Posted

Date	Freq.	Route #	Time	Street Name	# Parked Vehicles	Debris (weight)	Debris (volume)	Debris Composition
7/13/2009	R	5	8:02	Via Nontego	20			Grass, Leafs
7/13/2009	R	5	8:06	Via Alegre	16			Trash, Leafs
7/13/2009	R	5	8:14	Via Montezuma	16			Leafs, Trash, Dirt
7/13/2009	R	5	8:18	Via Aroboleada	9			Twigs, Leafs
7/13/2009	R	5	8:23	Via Casa Loma	11			Dirt, Rocks, Leafs
7/13/2009	R	5	8:27	Via Santo Tomas	20			Trash, Rock, Leaf, Dirt
7/13/2009	R	5	8:35	Via Montecito	21			Leafs, Rock, Dirt
7/13/2009	R	5	8:39	Via Verbena	11			Rock, Leafs
7/13/2009	R	5	8:43	Via Vistosa	12			Leaf, Rock
7/13/2009	R	5	8:46	Via Bandita	5			Dirt, Leaf
7/13/2009	R	5	8:55	Via Lado	7			Dirt, Leaf
7/13/2009	R	5	8:58	Vista Torito	23			Rock, Trash, Dirt, Leafs
7/13/2009	R	5	9:01	Via San Gorgonio	15			Trash, Leafs, Dirt
7/13/2009	R	5	9:09	Via San Jacinto	17			Leafs, Grass, Dirt
7/13/2009	R	5	9:09	Via Corbina	3			Leafs
7/13/2009	R	5	9:48	Calle Vicente	6			Rock, Grass, Leafs
7/13/2009	R	5	10:03	Calle Arco	0			Rock, Dirt
7/13/2009	R	5	10:10	Calle Grande Vista	46			Dirt, Leafs
7/13/2009	R	5	10:33	Via Nada	1			Leafs
7/13/2009	R	5	10:35	Avenida Vaquero	2			Leafs
					485	4.5	3.9	
7/13/2009	R	13	8:08	Abril	3			Dirt
7/13/2009	R	13	8:12	Monterey	0			Leafs
7/13/2009	R	13	8:16	Calle Abril	0			Dirt
7/13/2009	R	13	8:19	Monterey	7			Dirt
7/13/2009	R	13	8:21	Sanramento	3			Dirt
7/13/2009	R	13	8:53	Calle Mayo	9			Dirt
7/13/2009	R	13	8:54	Calle Campana	0			Leafs
7/13/2009	R	13	9:21	Calle Bienvenida	11			Leafs
7/13/2009	R	13	9:24	Via Manzana	9			Dirt
7/13/2009	R	13	9:32	Calle Real	14			Dirt
7/13/2009	R	13	9:39	Calle Manzana	13			Dirt
7/13/2009	R	13	9:50	Calle Real	8			Leafs
7/13/2009	R	13	9:52	Anda Lucia	26			Leafs
7/13/2009	R	13	9:58	Calle Bienvenida	18			Leafs
7/13/2009	R	13	9:12	Calle Junio	3			Dirt
7/13/2009	R	13	9:14	Calle Junio	10			Leafs
7/13/2009	R	13	9:19	Calle Mayo	7			Dirt
7/13/2009	P	13	9:00	Calle Canasta	1			Dirt
7/13/2009	P	13	9:02	Calle Campana	0			Leafs
7/13/2009	P	13	9:10	Calle Junio	2			Leafs
7/13/2009	P	13	9:11	Via Sacramento	2			Dirt
					146	3.5	4.75	
7/14/2009	E	2	4:08	Calle Amanecer	0			Trash/Leaf
7/14/2009	E	2	4:09	Calle Negocio	3			Dirt/Leaf
7/14/2009	E	2	4:13	Calle Trepadora	0			Leaf
7/14/2009	E	2	4:20	Calle Cordillera	0			Trash/Leaf
7/14/2009	E	2	4:30	Calle Somora	0			Trash/Dirt/Leaf
7/14/2009	E	2	4:30	Calle Recodo	7			Trash/Dirt/Leaf
7/14/2009	E	2	5:04	Camino Vera Cruz	0			Trash/Dirt/Leaf
7/14/2009	E	2	2:24	Avenida La Pata	0			Trash/Dirt/Leaf
7/14/2009	E	2	5:16	Avenida Vista Hermosa	0			Dirt
7/14/2009	E	2	5:52	Via Suerte	2			Dirt
7/14/2009	E	2	6:00	Calle Campanero	1			Leaf
7/14/2009	E	2	6:05	Avenida Talega	0			Trash/Leaf

**CITY OF SAN CLEMENTE
STREET SWEEPING DEBRIS COLLECTION STUDY
2009-CYCLE 1**

E = Early Morning, R = Residential, P = Posted

Date	Freq.	Route #	Time	Street Name	# Parked Vehicles	Debris (weight)	Debris (volume)	Debris Composition
7/14/2009	E	2	6:50	Calle Saluda	0			Leaf
7/14/2009	E	2	6:53	Calle Portofino	0			Leaf
7/14/2009	E	2	7:25	CaminoLa Pedrica	0			Trash/Leaf
7/14/2009	E	2	7:43	Calle Altea	2			Trash/Dirt/Leaf
					15	4.5	3.9	
7/14/2009	R	6	8:00	Carretera	7			Dirt/Leaf
7/14/2009	R	6	8:02	Via Blanco	7			Trash/Dirt/Leaf
7/14/2009	R	6	8:07	Penasio	0			Dirt/Leaf
7/14/2009	R	6	8:08	Arbolado	2			Leaf
7/14/2009	R	6	8:10	Bello Panorama	16			Trash/Leaf
7/14/2009	R	6	8:13	Sacramento	0			Trash/Leaf
7/14/2009	R	6	8:16	Camino Ver Cruz	0			Leaf
7/14/2009	R	6	8:17	Riachuelo	39			Dirt/Leaf
7/14/2009	R	6	8:27	Llano	16			Leaf
7/14/2009	R	6	8:31	Cerca	6			Leaf
7/14/2009	R	6	8:39	Calle Heraldo	32			Trash/Dirt/Leaf
7/14/2009	R	6	8:39	Arroyo	12			Trash/Dirt/Leaf
7/14/2009	R	6	8:43	Pandero	2			Leaf
7/14/2009	R	6	8:45	Caminante	5			Dirt/Leaf
7/14/2009	R	6	8:46	Otero	6			Leaf
7/14/2009	R	6	8:54	Novilunio	2			Leaf
7/14/2009	R	6	8:57	Calle Doncello	0			Leaf
7/14/2009	R	6	9:04	Penasco	14			Trash/Leaf
7/14/2009	R	6	9:19	Campo Raso	23			Trash/Dirt/Leaf
7/14/2009	R	6	9:20	Charco	0			Dirt/Leaf
7/14/2009	R	6	9:41	Costa	0			Leaf
7/14/2009	R	6	9:45	Camino Vera Cruz	0			Trash/Leaf
7/14/2009	R	6	9:51	Sacramento	0			Dirt/Leaf
7/14/2009	R	6	10:00	Camino Del Rio	0			Dirt/Leaf
					189	3.75	3.25	
TOTALS					3561	98.75	90.3	

**CITY OF SAN CLEMENTE
STREET SWEEPING DEBRIS COLLECTION STUDY
2009-CYCLE 2**

E = Early Morning, R = Residential, P = Posted

Date	Freq.	Route #	Time	Street Name	# Parked Vehicles	Debris (weight)	Debris (volume)	Debris Composition
7/22/2009	E	3	3:28	City Yard Lot				Dirt
7/22/2009	E	3	4:20	North Beach Lot	3			Dirt
7/22/2009	E	3	4:30	Cabrillo Lot	2			Dirt
7/22/2009	E	3	4:33	Del Mar	2			Leafs
7/22/2009	E	3	5:20	Library	16			Dirt
7/22/2009	E	3	5:26	Boys and Girls Club	1			Dirt
7/22/2009	E	3	6:05	Del Mar	2			Leafs
7/22/2009	E	3	6:12	Ola Vista	18			Dirt
7/22/2009	E	3	6:31	Linda Lane	5			Dirt
7/22/2009	E	3	6:37	San Forgonio Park	1			Leafs
7/22/2009	E	3	7:04	Liberty Park	4			Leafs
7/22/2009	E	3	7:25	Tierra Grande Park	0			Dirt
7/22/2009	E	3	7:45	Talega Park	2			Leafs
7/22/2009	E	3	7:57	Palizada	4			Leafs
7/22/2009	E	3	3:30	Avenida Pico	0			Trash, Dirt
7/22/2009	E	3	3:45	Via Pico Plaza	0			Trash, Dirt
7/22/2009	E	3	4:18	Calle Del Cerro	0			Leaf, Dirt
7/22/2009	E	3	4:31	Camino Vera Cruz	0			Trash, Leaf, Dirt
7/22/2009	E	3	4:37	Avenida La Pata	0			Leaf, Dirt
7/22/2009	E	3	4:40	Avenida Vista Hermosa	0			Leaf, Dirt
7/22/2009	E	3	6:18	Avenida Talega	0			Trash, Dirt, Leafs
7/22/2009	E	3	7:02	Richard Memorial park	4			
						2.25	1.95	
7/15/2009	E	3	3:30	Ave Pico	0			Trash/Dirt
7/15/2009	E	3	3:34	Via Pico Plaza	0			Trash/Dirt
7/15/2009	E	3	3:50	Calle Del Cerro	0			Trash/Dirt
7/15/2009	E	3	4:17	Camino Vera Cruz	0			Trash/Dirt/Leaf
7/15/2009	E	3	4:23	Avenida La Pata	0			Trash/Dirt
7/15/2009	E	3	4:27	Vista Hermosa	0			Trash/Dirt
7/15/2009	E	3	6:02	Avenida Talega	0			Trash/Dirt/Leaf
7/15/2009	E	3	6:54	Richard Memorial Park	2	1.5	1.3	Trash/Dirt/Leaf
					66	3.75	3.25	
7/15/2009	R	11	8:02	Trafalgar Lane	43			Trash/Dirt/Leaf
7/15/2009	R	11	8:10	Ave Caldiz	31			Leaf
7/15/2009	R	11	8:16	Barcelona	36			Trash/Leaf
7/15/2009	R	11	8:26	Esplanade	39			Trash/Leaf
7/15/2009	R	11	8:37	W. Santiago	26			Trash/Leaf
7/15/2009	R	11	8:43	W. Paseo De Cristobal	47			Dirt/leaf
7/15/2009	R	11	8:47	W Cordoba	32			Dirt/leaf
7/15/2009	R	11	8:51	W Ave Gaviota	52			Dirt/leaf
7/15/2009	R	11	8:55	W. Ave Valencia	31			Trash/Leaf
7/15/2009	R	11	8:57	S. Ola Vista	13			Trash/Dirt/Leaf
7/15/2009	R	11	9:06	La Rambla	10			Leaf
7/15/2009	R	11	9:08	Poco Paseo	3			Trash/Dirt/Leaf
7/15/2009	R	11	9:41	Calle Toledo	5			Dirt/Leaf
7/15/2009	R	11	9:45	Valle Conchita	6			Dirt/Rock
7/15/2009	R	11	9:47	Vista Marina	11			Leaf
7/15/2009	R	11	10:08	Ave Princesa	29			Leaf
7/15/2009	R	11	10:24	Ave Del Presidente	0			Leaf
7/15/2009	R	11	10:25	Alley	0			Trash/Leaf

CITY OF SAN CLEMENTE
STREET SWEEPING DEBRIS COLLECTION STUDY
2009-CYCLE 2

E = Early Morning, R = Residential, P = Posted

Date	Freq.	Route #	Time	Street Name	# Parked Vehicles	Debris (weight)	Debris (volume)	Debris Composition
					414	3	2.6	
7/16/2009	E	4	3:30	Ave Pico	0			Trash/Dirt/Leaf
7/16/2009	E	4	4:03	Los Molinos	0			Trash/Dirt/Leaf
7/16/2009	E	4	4:03	Rincon	0			Dirt
7/16/2009	E	4	4:06	Calle Valle	1			Rock/Trash/Leaf/Dirt
7/16/2009	E	4	4:09	Calle De Los Molinos	20			Trash/Dirt/Leaf
7/16/2009	E	4	4:12	Calle Bonito	0			Dirt/Leaf
7/16/2009	E	4	4:16	Alley Los Obreros	0			Trash/Dirt/Leaf
7/16/2009	E	4	4:23	De La Estrella	2			Grass/Trash/Dirt/Leaf
7/16/2009	E	4	4:30	Calle De Industrias	0			Dirt/Leaf
7/16/2009	E	4	4:34	Ave Navarro	6			Trash/Leaf
7/16/2009	E	4	4:55	Presidio	0			Trash/Dirt/Leaf
7/16/2009	E	4	5:14	Avenida La Pata	0			Dirt/Leaf
7/16/2009	E	4	5:15	Calle Calejon	0			Dirt/Leaf
7/16/2009	E	4	5:25	Calle Ialesia	6			Trash/Dirt/Leaf
7/16/2009	E	4	5:30	Pintersco	5			Trash/Dirt/Leaf
7/16/2009	E	4	5:33	Fabricante	0			Trash/Dirt/Leaf
7/16/2009	E	4	5:58	Calle Alicante	0			Trash/Leaf
7/16/2009	E	4	5:59	Puerta Del Sol	0			Trash/Leaf
7/16/2009	E	4	6:03	Calle Batido	0			Dirt/Leaf
7/16/2009	E	4	6:05	Camino Kelosia	0			Leaf
7/16/2009	E	4	6:08	Avanzado	1			Dirt/Leaf
7/16/2009	E	4	6:33	Calle Tabasco	0			Trash/Leaf
					41	4.5	3.9	
7/16/2009	R	12	7:45	W. San Antonio	9			Dirt
7/16/2009	R	12	7:50	Cornelio	6			Seeds/Leaf
7/16/2009	R	12	7:54	Junipero	16			Trash/Leaf
7/16/2009	R	12	7:55	W. Ave San Gabriel	17			Dirt/Leaf
7/16/2009	R	12	8:02	San Gabriel	20			Leaf
7/16/2009	R	12	8:05	San Pablo	14			Park/Leaf
7/16/2009	R	12	8:10	E. Ave Junipero	9			Trash/Dirt/Leaf
7/16/2009	R	12	8:11	Ave Trieste	7			Leaf
7/16/2009	R	12	8:16	Entrada Paraiso	12			Rock/Trash/Leaf/Dirt
7/16/2009	R	12	8:17	Calle Real	1			Leaf
7/16/2009	R	12	8:22	E. Ave Cornello	14			Rock/Twigs/Leaf
7/16/2009	R	12	8:26	E. Ave Ramona	18			Leaf/Dirt
7/16/2009	R	12	8:30	Cerrito Cielo	2			Leaf/Dirt
7/16/2009	R	12	8:32	Arriba Linda	5			Rock/Dirt
7/16/2009	R	12	8:38	E. Ave San Antonio	7			Dirt/Leaf
7/16/2009	R	12	8:42	E. Ave San Juan	12			Trash/Leaf
7/16/2009	R	12	8:44	Calle Maria	0			Rock
7/16/2009	R	12	8:45	Calle Leticia	1			Leaf/Rock
7/16/2009	R	12	8:50	Calle Mayita	2			Rock
7/16/2009	R	12	8:54	La Cima	2			Leaf
7/16/2009	R	12	8:57	Ave Salvador	55			Trash/Leaf
7/16/2009	R	12	9:12	Buena Suerte	10			Trash/Leaf
7/16/2009	R	12	9:13	Vista Cayenta	2			Dirt/Twigs/Leaf
7/16/2009	R	12	9:15	Vista Valinda	7			Leaf
7/16/2009	R	12	9:17	Vista Cantora	1			Trash/Dirt/Leaf
7/16/2009	R	12	9:18	Vista Alcedo	1			Dirt/Leaf
7/16/2009	R	12	9:26	S. La Esperanza	42			Leaf

**CITY OF SAN CLEMENTE
STREET SWEEPING DEBRIS COLLECTION STUDY
2009-CYCLE 2**

E = Early Morning, R = Residential, P = Posted

Date	Freq.	Route #	Time	Street Name	# Parked Vehicles	Debris (weight)	Debris (volume)	Debris Composition
7/16/2009	R	12	9:28	E. Avenida Cordoba	9			Rock/Leaf
7/16/2009	R	12	9:30	Avenida Arlena	0			Trash/Leaf
7/16/2009	R	12	9:41	Calle Esmarca	11			Rock/Leaf
7/16/2009	R	12	9:42	Calle Alta	0			Leaf
7/16/2009	R	12	9:45	Calle Patricia	14			Trash/Leaf
7/16/2009	R	12	9:46	Via Bobina	9			Trash/Dirt/Leaf
7/16/2009	R	12	10:38	E Ave De Los Lobos Marind	4			Leaf/Dirt
7/16/2009	R	12	10:40	Alrazak	9			Dirt/Leaf
7/16/2009	R	12	10:43	Ave Verde	4			Dirt
7/16/2009	R	12	10:47	Ladera Lane	0			Leaf/Dirt
7/16/2009	R	12	10:51	Via Avila	8			Dirt
7/16/2009	R	12	10:53	Via La Jolla	9			Leaf/Dirt
7/16/2009	R	12	10:56	Via Catalina	0			Leaf/Dirt
7/16/2009	R	12	10:58	Via La Mesa	5			Leaf/Dirt
7/16/2009	R	12	11:12	San Gabriel	16			Dirt/Leaf
					390	4.5	3.9	
7/17/2009	E	5	3:30	Calla Amanacer	0			Trash/Dirt/Leaf
7/17/2009	E	5	4:02	Calle Negocio	3			Dirt/Leaf
7/17/2009	E	5	4:06	Trepadora	0			Leaf
7/17/2009	E	5	4:14	Cordillera	0			Trash/Leaf
7/17/2009	E	5	4:25	Sombra	0			Dirt/Leaf
7/17/2009	E	5	4:33	Recodo	7			Trash/Dirt/Leaf
7/17/2009	E	5	4:40	Camino Vera Cruz	0			Trash/Dirt
7/17/2009	E	5	4:45	Avenida La Pata	0			Trash/Dirt/Leaf
7/17/2009	E	5	4:53	Avenida Vista Hermosa	0			Trash/Dirt
7/17/2009	E	5	5:54	Campanero	2			Dirt/Leaf
7/17/2009	E	5	6:00	Suereta	0			Dirt
7/17/2009	E	5	6:01	Talegel	0			Dirt
7/17/2009	E	5	6:23	Tierra Grande	0			Leaf
7/17/2009	E	5	6:35	Calle Portafino	0			Dirt/Leaf
7/17/2009	E	5	6:41	Calle Saluda	0			Trash/Dirt/Leaf
7/17/2009	E	5	7:05	Camino La Pedriza	0			Trash/Leaf
7/17/2009	E	5	7:53	Altea	5			Trash/Dirt
					17	4.5	6.9	
7/20/2009	E	1	3:41	El Camino Real	0			Dirt
7/20/2009	E	1	3:54	North Beach Lots	2			Leafs
7/20/2009	E	1	4:09	Avenida pico				Dirt
7/20/2009	E	1	4:10	El Camino Real				Leafs
7/20/2009	E	1	4:29	El Camino Real				Dirt
7/20/2009	E	1	4:46	Christianitos				Leafs
7/20/2009	E	1	4:48	El Camino Real	40			Dirt
7/20/2009	E	1	4:55	Magdalena	11			Dirt
7/20/2009	E	1	5:10	Avenida Presidio	0			Dirt
7/20/2009	E	1	5:13	Del Mar	12			Leafs
7/20/2009	E	1	5:29	Avenida Palizada	0			Dirt
7/20/2009	E	1	5:37	Calle Lago	0			Leafs
7/20/2009	E	1	5:59	Avenida Mendecino	0			Leafs
7/20/2009	E	1	6:17	Del Mar	14			Dirt
7/20/2009	E	1	6:24	Ola Vista	4			Dirt
7/20/2009	E	1	6:28	Victoria Parking Lot	0			Dirt
7/20/2009	E	1	6:34	Calle Puente	19			Leafs

**CITY OF SAN CLEMENTE
STREET SWEEPING DEBRIS COLLECTION STUDY
2009-CYCLE 2**

E = Early Morning, R = Residential, P = Posted

Date	Freq.	Route #	Time	Street Name	# Parked Vehicles	Debris (weight)	Debris (volume)	Debris Composition
7/20/2009	E	1	7:13	Presidido				Dirt
7/20/2009	E	1	7:14	Escuela	87			Dirt
7/20/2009	E	1	7:16	De Juego	10			Leafs
7/20/2009	E	1	7:17	Calle Salida	17			Dirt
7/20/2009	E	1	7:20	Sandia	3			Dirt
7/20/2009	E	1	7:23	Calle Miguel	2			Leafs
7/20/2009	E	1	7:25	Empalme	1			Leafs
7/20/2009	E	1	7:29	Calle Fiosh	1			Dirt
7/20/2009	E	1	7:34	Calle Diablo	5			Leafs
7/20/2009	E	1	7:35	Villario	10			Dirt
7/20/2009	E	1	7:37	Delicada	2			Dirt
7/20/2009	E	1	7:38	Felicidad	1			Leafs
7/20/2009	E	1	7:40	Dorado	5			Dirt
7/20/2009	E	1	7:45	Calle Rico	3			Leafs
7/20/2009	E	1	7:46	Dorado	6			Dirt
7/20/2009	E	1	7:49	Calle Dorado	16			Dirt
7/20/2009	E	1	7:52	Miguel	0			Leafs
7/20/2009	E	1	7:52	Rescador	11			Leafs
7/20/2009	E	1	3:30	Pico Avenue	0			Leafs, Trash, Dirt
7/20/2009	E	1	3:47	Los Molinos	13			Trash, Dirt, Leafs
7/20/2009	E	1	3:48	Rincon	0			Dirt
7/20/2009	E	1	3:50	Calle Valle	2			Leafs,Trash, Dirt
7/20/2009	E	1	3:56	Calle Bonito	0			Leafs,Dirt
7/20/2009	E	1	4:00	Los Obreros	0			Leafs, Drt
7/20/2009	E	1	4:03	De la Estrella	1			Trash, Leafs, Dirt
7/20/2009	E	1	4:11	Avenida Navarro	12			Trash, Dirt
7/20/2009	E	1	4:12	Calle De Industrias	0			Trash, Leafs, Dirt
7/20/2009	E	1	4:15	Via Pico Plaza	0			Leafs
7/20/2009	E	1	4:55	Presidido	0			Trash, Leafs, Dirt
7/20/2009	E	1	5:08	Avenida La Pata	1			Leafsa
7/20/2009	E	1	5:12	Avenida Callejon	0			Leafs, Trash, Dirt
7/20/2009	E	1	5:18	Iglesia	4			Leafs, Dirt
7/20/2009	E	1	5:23	Calle Pintoresco	4			Leafs, Dirt
7/20/2009	E	1	5:26	Avenida Fabricante	0			Leafs
7/20/2009	E	1	6:02	Calle Aliacante	0			Leafs
7/20/2009	E	1	6:03	Puerta Del Sol	0			Leafs, Dirt
7/20/2009	E	1	6:06	Calle Batido	0			Dirt
7/20/2009	E	1	6:10	Camino Celosia	0			Leafs, Dirt
7/20/2009	E	1	0:00	Avanca	1			Trash, Leafs
7/20/2009	E	1	6:23	Tabarco	0			
					320	4.5	3.9	
7/20/2009	R	1	7:57	Felicidad	14			Dirt
7/20/2009	R	1	8:01	Delicado	5			Leafs
7/20/2009	R	1	8:05	Villario	3			Dirt
7/20/2009	R	1	8:18	Familia	4			
7/20/2009	R	1	8:19	Miguel	0			
7/20/2009	R	1	8:21	Pueblo	2			
7/20/2009	R	1	8:23	Christan Creek	3			
7/20/2009	R	1	8:39	Empalme	6			
7/20/2009	R	1	8:42	Presidio	11			
7/20/2009	R	1	8:51	Mendoza	5			

**CITY OF SAN CLEMENTE
STREET SWEEPING DEBRIS COLLECTION STUDY
2009-CYCLE 2**

E = Early Morning, R = Residential, P = Posted

Date	Freq.	Route #	Time	Street Name	# Parked Vehicles	Debris (weight)	Debris (volume)	Debris Composition
7/20/2009	R	1	8:55	Delicada	4			
7/20/2009	R	1	8:59	Familia	7			
7/20/2009	R	1	9:01	Empalme	32			
7/20/2009	R	1	9:04	Fiesta	3			
7/20/2009	R	1	9:07	Neblino	4			
7/20/2009	R	1	9:10	Pueblo	7			
7/20/2009	R	1	9:14	Robles	5			
7/20/2009	R	1	9:35	San Pablo	22			
7/20/2009	R	1	9:36	La Serena	3			
7/20/2009	R	1	9:53	Ensueno	6			
					146		5.5	
7/20/2009	R	9	7:12	Magdalena	13			Grass, Dirt, Leafs
7/20/2009	R	9	7:16	Crespi	17			Leafs, Trash
7/20/2009	R	9	7:22	Calle Gomez	5			Leafs
7/20/2009	R	9	7:23	Ortega	5			Dirt, Leafs
7/20/2009	R	9	7:25	Del Cerrito	4			Dirt, Leafs
7/20/2009	R	9	7:26	Del Rito	4			Dirt, Leafs
7/20/2009	R	9	7:27	Ardilla	3			Dirt, Leafs
7/20/2009	R	9	7:36	Bahia	0			Leafs, Dirt
7/20/2009	R	9	7:42	Santa Margarita	0			Leaf
7/20/2009	R	9	7:45	Lota	5			Dirt, Leafs
7/20/2009	R	9	7:54	Costanso	7			Leaf, Dirt
7/20/2009	R	9	8:00	San Luis Rey	15			Trash, Leafs
7/20/2009	R	9	8:14	Santa Inez	20			Leafs, Dirt
7/20/2009	R	9	8:16	Dominguez	22			Leafs, Dirt
7/20/2009	R	9	8:18	San Dimas	19			Leafs
7/20/2009	R	9	8:22	San Fernando	24			Dirt, Leafs
7/20/2009	R	9	8:27	Buena Ventura	27			Dirt, Leafs
7/20/2009	R	9	8:32	Santa margarita	54			Dirt,Leafs
7/20/2009	R	9	8:37	Dolores	1			Leafs
7/20/2009	R	9	8:37	San Diego	20			Leafs
7/20/2009	R	9	8:41	Lucia	7			Dirt, Leafs
7/20/2009	R	9	8:49	Carmelo	8			Dirt
7/20/2009	R	9	8:54	Pala	0			Leafs, Dirt
7/20/2009	R	9	9:07	Del Comercio	5			Dirt, Leafs
7/20/2009	R	9	9:31	E. Ave. Magdalena	0			Leafs, Rock, Dirt
7/20/2009	R	9	9:34	Los Bautismos	8			Leafs
7/20/2009	R	9	9:41	Acapulco	23			Leafs, Dirt
7/20/2009	R	9	9:44	Via Cisco	6			Leafs, Dirt
7/20/2009	R	9	9:45	Via Taluca	0			Leafs, Dirt
7/20/2009	R	9	9:53	La Pata	4			Leafs, Dirt
					326	5.25	4.5	
7/22/2009	P	7B	8:56	Loma Lane	0			Dirt
7/22/2009	P	7B	9:01	Ave. Palicada	6			Leafs
7/22/2009	P	7B	9:03	Aresno	6			Dirt
7/22/2009	P	7B	9:10	Avenida Miramar	1			Leafs
7/22/2009	P	7B	9:14	Avenida Serra	5			Dirt
7/22/2009	P	7B	9:23	N. Ola Vista	4			Dirt
7/22/2009	P	7B	9:29	Encino Lane	1			Leafs

**CITY OF SAN CLEMENTE
STREET SWEEPING DEBRIS COLLECTION STUDY
2009-CYCLE 2**

E = Early Morning, R = Residential, P = Posted

Date	Freq.	Route #	Time	Street Name	# Parked Vehicles	Debris (weight)	Debris (volume)	Debris Composition
7/22/2009	P	7B	9:32	Granada	1			Dirt
7/22/2009	P	7B	9:37	Cabrillo	1			Leafs
7/22/2009	P	7B	9:41	Seville	2			Dirt
7/22/2009	P	7B	9:43	Cabrillo	3			Leafs
7/22/2009	P	7B	9:50	Granada	2			Leafs
7/22/2009	P	7B	10:03	Victoria	3			Leafs
7/22/2009	P	7B	10:11	Santa Barbara	9			Leafs
7/22/2009	P	7B	10:20	Santa Barbara	6			Dirt
7/22/2009	P	7B	10:27	Rosa	1			Dirt
7/22/2009	P	7B	10:29	Ola Vista	0			Leafs
7/22/2009	P	7B	10:20	Rosa	0			Dirt
7/22/2009	P	7B	10:35	Monterey	4			Leafs
7/22/2009	P	7B	10:41	Mateo	0			Dirt
7/22/2009	P	7B	10:42	Alagador	1			Leafs
7/22/2009	P	7B	10:45	Monterey	5			Dirt
7/22/2009	P	7B	10:47	Madrid	2			Leafs
					63	2.25	3	
7/22/2009	P	15A	9:03	Deschecia	3			Trash, Dirt, Leafs
7/22/2009	P	15A	9:05	Calle Las Bolas	8			Trash,Grass, Dirt
7/22/2009	P	15A	9:09	Avenida Florencia	3			Leafs, Grass, Dirt
7/22/2009	P	15A	9:11	Avenida Hacienda	0			Leafs
7/22/2009	P	15A	9:12	Calle Sacramento	0			Trash, Dirt, Leafs
7/22/2009	P	15A	9:17	Pelayo	13			Trash, Dirt, Leafs
7/22/2009	P	15A	9:17	Buena Vista	5			Trash, Dirt, Leafs
7/22/2009	P	15A	9:20	Dije	1			Dirt, Leafs
7/22/2009	P	15A	9:21	Calle Colina	0			Leaf
7/22/2009	P	15A	9:26	Miador	4			Dirt
7/22/2009	P	15A	9:27	Del Reposo	0			Leafs, Trash
7/22/2009	P	15A	9:31	De LaGrulls	8			Dirt, Trash, Leafs
7/22/2009	P	15A	9:39	Calle puente	5			Leafs
7/22/2009	P	15A	9:58	Aragon	12			Trash, Leafs
7/22/2009	P	15A	10:13	El Portal	0			Trash,Dirt, Leafs
7/22/2009	P	15A	10:15	El Prado	1			Leafs
7/22/2009	P	15A	10:17	Del Poniente	2			Trash, Leafs
7/22/2009	P	15A	10:25	Canada	8			Trash, Leafs
7/22/2009	P	15A	10:47	W. El Portal	4			Trash, Dirt
7/22/2009	P	15A	10:48	Calle Oso	0			Trash, Leafs
7/22/2009	P	15A	10:53	W. Avenida Mariposa	1			Leafs
7/22/2009	P	15A	10:55	W. Avenida Escallones	1			Trash, Leafs, Dirt
7/22/2009	P	15A	11:04	Mariposa	3			Trash, Leafs
7/22/2009	P	15A	11:11	La Paloma	0			Trash, Leafs
7/22/2009	P	15A	11:15	W. Avenida Marquita	4			Leafs
7/22/2009	P	15A	11:27	Avenida Sde La Estrella	4			Leafs
7/22/2009	P	15A	11:30	La Ronda	2			Dirt, Trash, Leafs
7/22/2009	P	15A	11:36	Chiquita	0			Dirt, Leafs
7/22/2009	P	15A	11:40	E. Mariposa	0			Trash, Leafs
7/22/2009	P	15A	11:45	E. Mariquita	0			Trash, Leafs
					92	3	2.6	
7/23/2009	E	4	4:00	Avenida Pico	0			Leafs,Trash, Dirt
7/23/2009	E	4	4:01	Los Molinos	5			Trash, Dirt
7/23/2009	E	4	4:05	Calle Bomito	0			Leafs

**CITY OF SAN CLEMENTE
STREET SWEEPING DEBRIS COLLECTION STUDY
2009-CYCLE 2**

E = Early Morning, R = Residential, P = Posted

Date	Freq.	Route #	Time	Street Name	# Parked Vehicles	Debris (weight)	Debris (volume)	Debris Composition
7/23/2009	E	4	4:09	Calle Valle				Leafs, Dirt
7/23/2009	E	4	4:11	Los Obreros	0			Trash, Dirt, Leafs
7/23/2009	E	4	4:16	De La Estrella	0			Leafs, Trash, Dirt
7/23/2009	E	4	4:21	Via Pico Plaza	0			Dirt, Leafs
7/23/2009	E	4	4:28	Presidio	0			Dirt,Trash,Leafs
7/23/2009	E	4	5:09	Avenida La pata	0			Trash, Grass, Dirt, L
7/23/2009	E	4	6:51	Call Del Cerro	0			Trash, Leafs,Dirt
7/23/2009	E	4	7:03	Avenida Vista Montana	0			Leafs
7/23/2009	E	4	7:07	Calle Aguila	0			Trash, Leafs
7/23/2009	E	4	7:40	Pasadero	13			Trash, Leafs
					18			
7/23/2009	P	16A	9:01	Calle Mirador				Trash, Leafs
7/23/2009	P	16A	9:12	Florencia	1			Trash, Leafs
7/23/2009	P	16A	9:13	Los Bolas	12			Leafs, Dirt, Trash
7/23/2009	P	16A	9:20	Calle Sacramento	2			Trash,Leafs
7/23/2009	P	16A	9:21	Calle Colonia	2			Trash, Leafs
7/23/2009	P	16A	9:23	Buena Vista	11			Trash, Leafs
7/23/2009	P	16A	9:27	Dije	1			Leafs
7/23/2009	P	16A	9:30	Pelayo	11			Trash, Leafs
7/23/2009	P	16A	9:37	Hacienda	1			Leafs
7/23/2009	P	16A	9:39	De La Grulla	1			Leafs
7/23/2009	P	16A	9:40	Del Reposo				Trash, Leafs
7/23/2009	P	16A	9:52	Calle Puente	5			Trash, Leafs
7/23/2009	P	16A	10:00	Aragon				Trash, Leafs
7/23/2009	P	16A	10:06	El Portal	3			Trash,Leafs
7/23/2009	P	16A	10:10	Calle Oso	2			Trash, Dirt, Leafs
7/23/2009	P	16A	10:11	W. El Portal	3			Leafs
7/23/2009	P	16A	10:22	Del Poniente	1			Dirt, Leafs
7/23/2009	P	16A	10:25	W. Canada	6			Dirt, Leafs
7/23/2009	P	16A	10:32	W. Escalones	4			Trash, Leafs
7/23/2009	P	16A	10:48	W. Mariposa	11			Trash, Leafs
7/23/2009	P	16A	11:02	W. Mariquita	3			Trash
7/23/2009	P	16A	11:09	La Paloma				Leafs
7/23/2009	P	16A	11:32	La Ronda	5			Leafs, Dirt
7/23/2009	P	16A	11:35	Chiquita	0			Trash, Dirt
7/23/2009	P	16A	11:37	E. El Portal	0			Trash, Leafs
7/23/2009	P	16A	11:40	E. Canada	0			Trash, Leafs
7/23/2009	P	16A	11:42	E. Escalones	0			Tras, Leafs
7/23/2009	P	16A	11:43	De la Estrell	0			Trash, Leafs
7/23/2009	P	16A	11:43	E. Mariposa	1			Trash, Leafs
7/23/2009	P	16A	11:46	E. Mariquita	3			Trash, Dirt, Leafs
					89	4.5	3.9	
TOTALS					1961	37.5	42	

**CITY OF SAN CLEMENTE
STREET SWEEPING DEBRIS COLLECTION STUDY
2009-CYCLE 3**

E = Early Morning, R = Residential, P = Posted								
Date	Freq.	Route #	Time	Street Name	# Parked Vehicles	Debris (weight)	Debris (volume)	Debris Composition
8/5/2009	R	3	4:34	Faro	30			Leaf/Dirt
8/5/2009	R	3	7:39	Calle Cuadra	2			Leaf/Dirt
8/5/2009	R	3	7:40	Calle Paisano	5			Leaf
8/5/2009	R	3	7:43	Calle Burro	10			Grass/Dirt
8/5/2009	R	3	7:46	Calle Luego	1			Leaf
8/5/2009	R	3	7:47	Calle Macho	4			Leaf
8/5/2009	R	3	7:50	Calle Spresso	0			Leaf
8/5/2009	R	3	7:55	Via Chueca	11			Dirt
8/5/2009	R	3	7:57	Calle Gaucho	2			Leaf/Dirt
8/5/2009	R	3	8:06	Calle Amigo	7			Leaf/Dirt
8/5/2009	R	3	8:07	Calle Descanso	9			Leaf
8/5/2009	R	3	8:15	Calle Embocadura	2			Leaf
8/5/2009	R	3	8:18	Calle Fierros	7			Leaf
8/5/2009	R	3	8:27	Calle Ganadero	7			Leaf/Dirt
8/5/2009	R	3	8:30	Calle Juarez	9			Leaf/Dirt
8/5/2009	R	3	8:31	Calle Baranda	5			Leaf
8/5/2009	R	3	8:35	Via Juarez	2			Leaf
8/5/2009	R	3	8:39	Calle Guadalajara	2			Leaf
8/5/2009	R	3	8:43	Calla Hidalgo	4			Leaf/Dirt
8/5/2009	R	3	8:48	Calle Corral	4			Leaf
8/5/2009	R	3	8:50	Calla Reata	3			Leaf/Dirt
8/5/2009	R	3	8:56	Calle Vallarata	21			Leaf
8/5/2009	R	3	8:57	Calla Cumbre	2			Leaf/Dirt
8/5/2009	R	3	9:02	Acantilado	2			Leaf
8/5/2009	R	3	9:11	Camino De Los Mares	24			Leaf
8/5/2009	R	3	9:30	Calle Nuevo	1			Leaf/Dirt
8/5/2009	R	3	9:31	Via Amapola	6			Leaf
8/5/2009	R	3	9:34	Call Piedras	0			Leaf/Dirt
8/5/2009	R	3	9:39	Calle Guadalajara	8			Leaf/Dirt
8/5/2009	R	3	9:49	Calle Estebano	8			Leaf
8/5/2009	R	3	9:57	Via Morado	2			Leaf/Dirt
8/5/2009	R	3	10:03	Calle Valarata	7			Leaf Dirt
8/5/2009	R	3	10:06	Calle Amable	4			Leaf
8/5/2009	R	3	10:10	Calle Brisa	13			Dirt
8/5/2009	R	3	10:13	Calle Contenta	6			Grass/Leaf
8/5/2009	R	3	10:18	Calle Dulce	5			Leaf
8/5/2009	R	3	10:23	Calle Guadalajara	0			Leaf
8/5/2009	R	3	10:27	Calle Hidalgo	4			Leaf
8/5/2009	R	3	10:29	Via Hidalgo	2			Leaf
8/5/2009	R	3	10:33	Calle Juarez	10			Leaf
8/5/2009	R	3	10:34	Calle Frontera	23			Leaf/Dirt
						7.5	6.75	
8/5/2009	E	3	3:30	Avenida Pico	0			Trash/Leaf/Dirt
8/5/2009	E	3	3:33	Via Pico Plaza	0			Leaf/Dirt
8/5/2009	E	3	3:56	Calle Del Cerro	0			Trash/Dirt

**CITY OF SAN CLEMENTE
STREET SWEEPING DEBRIS COLLECTION STUDY
2009-CYCLE 3**

E = Early Morning, R = Residential, P = Posted								
Date	Freq.	Route #	Time	Street Name	# Parked Vehicles	Debris (weight)	Debris (volume)	Debris Composition
8/5/2009	E	3	4:18	Camino Vera Cruz	0			Leaf/Dirt
8/5/2009	E	3	4:25	Avenida La Pata	0			Trash/Dirt
8/5/2009	E	3	4:28	Avenida Vista Hermosa	0			Trash/Dirt
8/5/2009	E	3	5:40	Avenida Talega	0			Trash/Leaf/Dirt
8/5/2009	E	3	6:30	Richard Steede Park	0			Trash/Leaf/Dirt
8/5/2009	E	3	7:22	Calle Fronterra	7	1.25	2.5	Trash/Leaf/Dirt
7/29/2009	E	3	4:08	City Yard Lot	6			
7/29/2009	E	3	5:00	Del Mar	3			
7/29/2009	E	3	5:08	City Hall Lot	14			
7/29/2009	E	3	5:16	Cristobal	5			
7/29/2009	E	3	6:03	Del Mar	15			
7/29/2009	E	3	6:10	Parque Del Mar	23			
7/29/2009	E	3	6:37	Linda	2			
7/29/2009	E	3	6:42	Mecha	0			
7/29/2009	E	3	7:16	Boys & Girls Club	3			
7/29/2009	E	3	7:28	Parking Lot	6			
7/29/2009	E	3	7:54	Tierra Grande Park	4			
7/29/2009	E	3	8:02	Liberty Club	1			
7/29/2009	E	3	8:14	Talega Park	3			
					366	8.75	9.25	
7/30/2009	E	4	3:36	El camino Real	0			Dirt
7/30/2009	E	4	3:57	Camino De Los Mares	0			Dirt
7/30/2009	E	4	4:05	Avenida Presidio	0			Dirt
7/30/2009	E	4	5:07	El Camino Real	2			Leafs
7/30/2009	E	4	5:08	Del Mar	11			Dirt
7/30/2009	E	4	5:20	Cabrillo	0			Leafs
7/30/2009	E	4	5:21	El Camino Real	0			Dirt
7/30/2009	E	4	5:23	Palizada	0			Dirt
7/30/2009	E	4	5:26	El Camino Real	0			Leafs
7/30/2009	E	4	5:30	Escalones	1			Leafs
7/30/2009	E	4	5:31	El Camino Real	0			Dirt
7/30/2009	E	4	5:32	Canada	1			Dirt
7/30/2009	E	4	5:33	El Portal	2			Leafs
7/30/2009	E	4	5:34	El Camino Real	1			Dirt
7/30/2009	E	4	5:39	Lago	0			Dirt
7/30/2009	E	4	5:43	El Camino Real	4			Dirt
7/30/2009	E	4	6:09	Del Mar	16			Dirt
7/30/2009	E	4	6:16	Ola Vista	1			Leafs
7/30/2009	E	4	6:20	Granada Lots				Lea
7/30/2009	E	4	6:20	Ola Vista	1			Leafs
7/30/2009	E	4	6:35	Camino Capistrano	18			Leafs
7/30/2009	E	4	6:38	Camino Capistrano	11			Leafs

**CITY OF SAN CLEMENTE
STREET SWEEPING DEBRIS COLLECTION STUDY
2009-CYCLE 3**

E = Early Morning, R = Residential, P = Posted								
Date	Freq.	Route #	Time	Street Name	# Parked Vehicles	Debris (weight)	Debris (volume)	Debris Composition
7/30/2009	E	4	6:44	De La Playa	3			Dirt
7/30/2009	E	4	6:48	Deshchecha	0			Dirt
					72	2	4.5	
7/31/2009	E	5	3:57	Camino De Lajon	0			
7/31/2009	E	5	4:20	El Camino Real	0			
7/31/2009	E	5	4:32	El Camino Real	38			
7/31/2009	E	5	4:34	Christianitos	7			
7/31/2009	E	5	5:28	El Camino Real	0			
7/31/2009	E	5	5:56	Del Mar	10			
7/31/2009	E	5	6:17	San Luis Rey	3			
7/31/2009	E	5	6:37	Del Mar	11			
7/31/2009	E	5	7:12	Camino De Los Mares	0			
7/31/2009	E	5	7:34	Camino De Los Mares	0			
7/31/2009	E	5	7:50	Calle Agua	4			
7/31/2009	E	5	7:57	Camino De Estrella	0			
7/31/2009	E	5	7:59	Camino Mira Costa	20			
7/31/2009	E	5	8:08	Camino Capistrano	6			
8/10/2009	R	5	3:30	Ave Pico	0			Trash/Leaf/Dirt
8/10/2009	R	5	4:10	Los Molinos	23			Trash/Leaf
8/10/2009	R	5	4:12	Calle Valle	3			Trash/Leaf/Dirt
8/10/2009	R	5	4:18	Los Obreros	0			Trash/Dirt
8/10/2009	R	5	4:32	Via Pico Plaza	0			Trash/Leaf/Dirt
8/10/2009	R	5	4:39	Presidio	0			Trash/Leaf
8/10/2009	R	5	4:56	Avenida La Pata	0			Trash/Leaf/Dirt
8/10/2009	R	5	5:00	Callejon	0			Leaf/Dirt
8/10/2009	R	5	5:07	Iglesia	2			Trash/Dirt
8/10/2009	R	5	5:09	Calle Pintoresco	6			Leaf/Dirt
8/10/2009	R	5	5:12	Fabricante	1			Leaf/Dirt
8/10/2009	R	5	6:04	Ave Vista Hermosa	6			Leaf/Dirt
8/10/2009	R	5	6:04	Del Sol	0			Trash/Leaf
8/10/2009	R	5	6:09	Calle Alicante	0			Leaf
8/10/2009	R	5	6:10	Batido	0			Trash/Dirt
8/10/2009	R	5	6:19	Camino Kelosia	0			Dirt
8/10/2009	R	5	6:20	Avaneado	3			Leaf
8/10/2009	R	5	6:32	Tobacco	0			Leaf
8/10/2009	R	5	6:54	Navarro	15			Trash/Dirt
8/10/2009	R	5	7:00	Calle Industrias	3			Leaf/Dirt
8/10/2009	R	5	9:10	Calle Real	12			Leaf/Dirt
8/10/2009	R	5	9:17	Via Manzana	13			Leaf/Dirt
8/10/2009	R	5	9:18	Via Del Campo	8			Leaf/Dirt
8/10/2009	R	5	9:26	Calle Anta Lucia	21			Leaf/Dirt
8/10/2009	R	5	9:32	Bienvenido	42			Leaf/Dirt
8/10/2009	R	5	9:34	Actino	4			Leaf

**CITY OF SAN CLEMENTE
STREET SWEEPING DEBRIS COLLECTION STUDY
2009-CYCLE 3**

E = Early Morning, R = Residential, P = Posted								
Date	Freq.	Route #	Time	Street Name	# Parked Vehicles	Debris (weight)	Debris (volume)	Debris Composition
8/10/2009	R	5	9:38	Calle Abril	4			Leaf
8/10/2009	R	5	9:40	Via Sacramento	5			Leaf
8/10/2009	R	5	9:43	Calle Monterey	12			Leaf
8/10/2009	R	5	9:50	Calle Mayo	23			Leaf
8/10/2009	R	5	9:55	Calle Juno	22			Leaf/Dirt
8/10/2009	R	5	11:10	Calle Guaymas	20			Leaf
8/10/2009	R	5	11:11	Calle La Vista	47			Trash/Leaf
8/10/2009	R	5	11:17	Calle Borrego	13			Leaf
8/10/2009	R	5	11:22	Via Breve	4			Leaf
8/10/2009	R	5	11:23	La Ventana	11			Trash/Leaf
8/10/2009	R	5	11:26	Monte Vista	16			Trash/Leaf
						6	5.2	
7/31/2009	E	5	3:33	Calla Negocio	0			Trash/Leaf/Dirt
7/31/2009	E	5	3:34	Trepadora	0			Leaf/Dirt
7/31/2009	E	5	3:44	Cordillera	0			Leaf/Dirt
7/31/2009	E	5	3:51	Sombra	0			Trash/Leaf/Dirt
7/31/2009	E	5	3:58	Recodo	0			Leaf/Dirt
7/31/2009	E	5	4:05	Camino Vera Cruz	0			Trash/Leaf/Dirt
7/31/2009	E	5	4:11	Avenida La Pata	0			Leaf/TrashDirt
7/31/2009	E	5	4:14	Avenida Vista Hermosa	0			Trash/Dirt
7/31/2009	E	5	5:33	Avenida Talega	0			Trash/Dirt
7/31/2009	E	5	5:45	Calle Saladon	0			Trash/Leaf/Dirt
7/31/2009	E	5	5:56	Call Portofino	0			Leaf
7/31/2009	E	5	6:02	Via Sarte	2			Leaf
7/31/2009	E	5	6:05	Calle Campanero	0			Trash/Leaf
					440	4.5	2.9	
8/3/2009	E	1	3:30	Ave Pico	0			Trash/Leaf/Dirt
8/3/2009	E	1	3:31	Via Pico Plaza	0			Trash/Leaf/Dirt
8/3/2009	E	1	3:32	Calle De Industrias	0			Leaf/Dirt
8/3/2009	E	1	3:36	Los Molinos	11			Trash/Leaf
8/3/2009	E	1	3:06	Rincon	0			Trash/Leaf
8/3/2009	E	1	3:58	Calle Valle	2			Trash/Leaf
8/3/2009	E	1	4:03	Calle Bonito	0			Trash/Leaf/Dirt
8/3/2009	E	1	4:09	Los Obreros	0			Trash/Leaf/Dirt
8/3/2009	E	1	4:14	De La Estrella	1			Trash/Leaf/Dirt
8/3/2009	E	1	4:20	Ave Navarro	8			Trash/Leaf/Dirt
8/3/2009	E	1	4:44	Avenida La Pata	0			Trash/Leaf/Dirt
8/3/2009	E	1	4:50	Callejon	0			Trash/Leaf/Dirt
8/3/2009	E	1	5:01	Calle Iglesia	11			Leaf/Dirt
8/3/2009	E	1	5:04	Calle Pintoresco	12			Leaf/Dirt
8/3/2009	E	1	5:10	Fabricatute	0			Leaf/Dirt

**CITY OF SAN CLEMENTE
STREET SWEEPING DEBRIS COLLECTION STUDY
2009-CYCLE 3**

E = Early Morning, R = Residential, P = Posted								
Date	Freq.	Route #	Time	Street Name	# Parked Vehicles	Debris (weight)	Debris (volume)	Debris Composition
8/3/2009	E	1	5:33	Calle Alicante	0			Leaf
8/3/2009	E	1	5:34	Puerta Del Sol	0			Leaf/Dirt
8/3/2009	E	1	5:38	Calle Batido	0			Leaf/Dirt
8/3/2009	E	1	5:40	Camino Celosia	0			Leaf/Dirt
8/3/2009	E	1	5:43	Calle Avanzado	12			Leaf/Dirt
8/3/2009	E	1	7:00	Presidio	0			Trash/Leaf
8/3/2009	E	1	3:28	El Camino Real	0			Leaves
8/3/2009	E	1	3:36	El Camino Real	0			Dirt
8/3/2009	E	1	3:41	North Beach Lots	1			Dirt
8/3/2009	E	1	4:02	El Camino Real	0			Leaves
8/3/2009	E	1	4:03	Ave Pico	0			Leaves
8/3/2009	E	1	4:15	El Camino Real	0			Dirt
8/3/2009	E	1	4:22	El Camino Real	0			Leaves
8/3/2009	E	1	4:42	El Camino Real	36			Dirt
8/3/2009	E	1	4:44	Christianitos				Dirt
8/3/2009	E	1	4:58	Magdalena	11			Dirt
8/3/2009	E	1	5:09	Ave Presidio	0			Leaves
8/3/2009	E	1	5:11	El Camino Real	5			Leaves
8/3/2009	E	1	5:13	Del Mar	9			Leaves
8/3/2009	E	1	5:25	El Camino Real	0			Leaves
8/3/2009	E	1	5:27	Palizada	0			Dirt
8/3/2009	E	1	5:30	El Camino Real	0			Dirt
8/3/2009	E	1	5:39	El Camino Real	0			Dirt
8/3/2009	E	1	7:04	Calle Puente	3			Leaves
8/3/2009	E	1	7:05	El Fuente	2			Leaves
8/3/2009	E	1	7:06	El Prado	5			Dirt
8/3/2009	E	1	7:18	Ave De La Playa	4			Leaves
8/3/2009	E	1	7:20	Deschecha	1			Leaves
8/3/2009	E	1	7:51	Magdalena	1			Dirt
8/3/2009	E	1	7:57	San Luis Rey	10			Dirt
						3.5	2.75	
8/3/2009	R	1	7:02	Calla Escuela	8			Leaf
8/3/2009	R	1	7:03	Calle Del Juego	6			Dirt
8/3/2009	R	1	7:05	Calle Salida	11			Trash/Leaf
8/3/2009	R	1	7:08	Calle Sandia	3			Leaf
8/3/2009	R	1	7:11	Calle Miguel	6			Leaf
8/3/2009	R	1	7:13	Calle Empalme	3			Leaf
8/3/2009	R	1	7:20	Calle Fiesta	5			Leaf/Dirt
8/3/2009	R	1	7:25	Calle Neblina	3			Leaf/Dirt
8/3/2009	R	1	7:30	Calle Pueblo	5			Leaf/Dirt
8/3/2009	R	1	7:37	Calle Familia	4			Leaf/Dirt
8/3/2009	R	1	7:42	Calle Villario	10			Leaf/Dirt
8/3/2009	R	1	7:50	Calle Delicada	5			Trash/Leaf/Dirt

**CITY OF SAN CLEMENTE
STREET SWEEPING DEBRIS COLLECTION STUDY
2009-CYCLE 3**

E = Early Morning, R = Residential, P = Posted								
Date	Freq.	Route #	Time	Street Name	# Parked Vehicles	Debris (weight)	Debris (volume)	Debris Composition
8/3/2009	R	1	7:55	Calle Felicidad	15			Leaf/Dirt
8/3/2009	R	1	8:03	Calle Pescador	11			Leaf
8/3/2009	R	1	8:10	Calle Dorado	18			Trash/Leaf
8/3/2009	R	1	8:29	Presidio Avenue	30			Leaf/Dirt
8/3/2009	R	1	8:32	Calle Mendoza	6			Leaf
8/3/2009	R	1	8:40	Calle Delicada	2			Leaf/Dirt
8/3/2009	R	1	8:44	Calle Familia	9			Leaf/Dirt
8/3/2009	R	1	8:48	Calle Empalme	8			Leaf
8/3/2009	R	1	8:45	Calle Pueblo	5			Leaf/Dirt
8/3/2009	R	1	8:54	Calle Neblina	5			Trash/Dirt
8/3/2009	R	1	9:02	Calle Fiesta	2			Leaf
8/3/2009	R	1	9:05	Calle Robles	6			Trash/Leaf/Dirt
8/3/2009	R	1	9:23	Miguel	0			Leaf/Dirt
8/3/2009	R	1	9:25	Calle Rica	4			Leaf
						9	7.8	
8/10/2009	E	1	4:30	El Camino Real	0			Dirt
8/10/2009	E	1	4:37	El Camino Real	0			Dirt
8/10/2009	E	1	4:53	North Beach Lots	8			Dirt
8/10/2009	E	1	5:13	El Camino Real	0			Leaves
8/10/2009	E	1	5:16	El Camino Real	0			Leaves
8/10/2009	E	1	5:19	El Camino Real	0			Leaves
8/10/2009	E	1	5:36	El Camino Real	37			Dirt
8/10/2009	E	1	5:44	Magdalena	11			Leaves
8/10/2009	E	1	6:04	Ave Presidio	0			Dirt
8/10/2009	E	1	6:08	Del Mar	5			Leaves
8/10/2009	E	1	6:17	Del Mar	24			Dirt
8/10/2009	E	1	6:28	Ola Vista	2			Dirt
8/10/2009	E	1	6:32	El Camino Real	3			Dirt
8/10/2009	E	1	6:41	El Camino Real	7			Dirt
8/10/2009	E	1	7:26	El Camino Real	19			Dirt
8/10/2009	E	1	8:57	Camino Los Mores	0			Leaves
					451	13	11	
8/3/2009	R	9	8:09	San Luis Rey	7			Dirt
8/3/2009	R	9	8:11	Santa Inez	8			Leaves
8/3/2009	R	9	8:13	Santa Inez	8			Leaves
8/3/2009	R	9	8:14	San Luis Rey	4			Dirt
8/3/2009	R	9	8:15	Dominguez	14			Dirt
8/3/2009	R	9	8:17	Dominguez	12			Leaves
8/3/2009	R	9	8:18: am	San Luis Rey	0			Leaves
8/3/2009	R	9	8:19	San Dimas	9			Dirt
8/3/2009	R	9	8:21	San Dimas	7			Dirt
8/3/2009	R	9	8:24	San Fernando	12			Leaves
8/3/2009	R	9	8:26	San Fernando	17			Dirt

**CITY OF SAN CLEMENTE
STREET SWEEPING DEBRIS COLLECTION STUDY
2009-CYCLE 3**

E = Early Morning, R = Residential, P = Posted								
Date	Freq.	Route #	Time	Street Name	# Parked Vehicles	Debris (weight)	Debris (volume)	Debris Composition
8/3/2009	R	9	8:28	San Luis Rey	0			Leaves
8/3/2009	R	9	8:29	Buena Ventura	17			Dirt
8/3/2009	R	9	8:36	Dolores	13			Dirt
8/3/2009	R	9	8:39	Santa Margarita	5			Dirt
8/3/2009	R	9	8:40	San Diego	9			Leaves
8/3/2009	R	9	8:41	San Diego	1			Dirt
8/3/2009	R	9	8:42	Lucia	12			Leaves
8/3/2009	R	9	8:45	Lucia	3			Leaves
8/3/2009	R	9	8:47	Santa Margarita	3			Leaves
8/3/2009	R	9	8:48	Carmelo	5			Dirt
8/3/2009	R	9	8:49	Carmelo	7			Leaves
8/3/2009	R	9	8:50	Pala	0			Leaves
8/3/2009	R	9	8:53	Santa Margarita	9			Leaves
8/3/2009	R	9	8:54	Santa Margarita	8			Leaves
8/3/2009	R	9	8:59	Del Comercio	8			Dirt
8/3/2009	R	9	9:31	Ave Coto	0			Leaves
8/3/2009	R	9	9:35	Ave Costanzo	3			Leaves
8/3/2009	R	9	9:41	Bahia	0			Dirt
8/3/2009	R	9	9:46	Santa Margarita	0			Dirt
8/3/2009	R	9	9:57	Crespi	4			Leaves
8/3/2009	R	9	10:02	Crespi	9			Dirt
8/3/2009	R	9	10:04	Gomez	4			Dirt
8/3/2009	R	9	10:05	Ortega	0			Leaves
8/3/2009	R	9	10:06	Ortega	2			Leaves
8/3/2009	R	9	10:07	Gomez	1			Dirt
8/3/2009	R	9	10:08	Del Rito	5			Leaves
8/3/2009	R	9	10:16	Magdalena	0			Leaves
8/3/2009	R	9	10:26	Los Bautismos	23			Leaves
8/3/2009	R	9	10:31	Acapulco	2			Dirt
8/3/2009	R	9	10:44	San Pablo	7			Dirt
					258	3.25	4	
8/4/2009	E	2	3:30	Calle Amanacer	0			Trash/Dirt
8/4/2009	E	2	3:44	Calle negocio	0			Trash/Leaf/Dirt
8/4/2009	E	2	3:48	Calle Trepadora	0			Leaf/Dirt
8/4/2009	E	2	3:56	Calle Cordillera	0			Leaf/Dirt
8/4/2009	E	2	4:04	Calle Recodo	6			Trash/Leaf/Dirt
8/4/2009	E	2	4:08	Calle Sombra	0			Leaf/Dirt
8/4/2009	E	2	4:20	Camino Vera Cruz	0			Trash/Leaf/Dirt
8/4/2009	E	2	4:25	Avenida La Pata	0			Trash/Dirt
8/4/2009	E	2	4:29	Avenida Vista Hermosa	0			Trash/Dirt
8/4/2009	E	2	5:55	Via Suerte	1			Leaf/Dirt
8/4/2009	E	2	5:58	Via Campanero	2			Trash/Leaf
8/4/2009	E	2	6:14	Avenida Talega	0			Trash/Leaf
8/4/2009	E	2	6:23	Calle Salida	0			Trash/Leaf/Dirt

**CITY OF SAN CLEMENTE
STREET SWEEPING DEBRIS COLLECTION STUDY
2009-CYCLE 3**

E = Early Morning, R = Residential, P = Posted								
Date	Freq.	Route #	Time	Street Name	# Parked Vehicles	Debris (weight)	Debris (volume)	Debris Composition
8/4/2009	E	2	6:32	Calle Portofino	0			Leaf/Dirt
					9			
8/4/2009	R	2	7:22	Avenida Salvador	35			Trash/Leaf/Dirt
8/4/2009	R	2	7:24	Calle De Soto	24			Leaf
8/4/2009	R	2	7:27	Calle Nina	8			Leaf
8/4/2009	R	2	7:33	Avenida Columbo	2			Dirt
8/4/2009	R	2	7:34	Avenida Teresa	12			Leaf/Dirt
8/4/2009	R	2	7:40	Calle Malequena	3			Dirt
8/4/2009	R	2	7:51	Calle De Los Alamos	0			Dirt
8/4/2009	R	2	8:23	Calle Monserrat	6			Leaf/Dirt
8/4/2006	R	2	8:25	Calle Dulcinea	5			Leaf/Dirt
8/4/2009	R	2	8:30	Tibidabo	0			Leaf
8/4/2009	R	2	8:34	Avenida Comumbo	10			Leaf/Dirt
8/4/2009	R	2	8:45	Avenida Vista Montana	11			Leaf
8/4/2009	R	2	8:55	Calle Aguila	0			Leaf
8/4/2009	R	2	9:05	Pastadero	0			Leaf
8/4/2009	R	2	9:25	Calle Del Cerro	0			Leaf
					116	7.5	6.5	
8/4/2009	E	9	3:31	El Camino Real	0			Dirt
8/4/2009	E	9	3:09	El Camino Real	0			Dirt
8/4/2009	E	9	4:54	Canada	0			Leaves
8/4/2009	E	9	5:00	El Camino Real	0			Leaves
8/4/2009	E	9	5:01	Escalones	0			Leaves
8/4/2009	E	9	5:02	El Camino Real	0			Dirt
8/4/2009	E	9	5:02	Mariposa	3			Dirt
8/4/2009	E	9	5:04	Marguita	0			Leaves
8/4/2009	E	9	5:05	El Camino Real	0			Leaves
8/4/2009	E	9	5:06	Palizada	0			Leaves
8/4/2009	E	9	5:07	El Camino Real	0			Dirt
8/4/2009	E	9	5:07	Miramar	0			Dirt
8/4/2009	E	9	5:12	El Camino Real	0			Dirt
8/4/2009	E	9	5:13	Cabrillo	1			Dirt
8/4/2009	E	9	5:14	Cabrillo	13			Leaves
8/4/2009	E	9	5:17	Del Mar	3			Leaves
8/4/2009	E	9	6:41	Camino De Estrella	9			Dirt
8/4/2009	E	9	6:43	Camino De Los Molinos	0			Leaves
8/4/2009	E	9	7:23	Camino De Los Mores	0			Leaves
8/4/2009	E	9	7:26	Calle Agua	22			Dirt
8/4/2009	E	9	7:31	Calle Agua	17			Dirt
8/4/2009	E	9	7:36	Camino De Estrella	8			Leaves
8/4/2009	E	9	7:39	Camino De Estrella	1			Leaves
8/4/2009	E	9	7:39	Camino Mira Costa	20			Dirt
8/4/2009	E	9	8:27	Del Presidente	0			Leaves

**CITY OF SAN CLEMENTE
STREET SWEEPING DEBRIS COLLECTION STUDY
2009-CYCLE 3**

E = Early Morning, R = Residential, P = Posted								
Date	Freq.	Route #	Time	Street Name	# Parked Vehicles	Debris (weight)	Debris (volume)	Debris Composition
8/4/2009	E	9	9:18	Posted Route	3			Dirt
8/4/2009	E	9	9:26	Marina	11			Leaves
8/4/2009	E	9	9:29	Marina	4			Dirt
8/4/2009	E	9	9:31		0			Dirt
8/4/2009	E	9	9:37	Serena	9			Leaves
8/4/2009	E	9	9:40	Serena	5			Leaves
8/4/2009	E	9	9:42	Lobos Marinos	4			Dirt
8/4/2009	E	9	9:43	Roca Vista	0			Dirt
8/4/2009	E	9	9:44	Primavera	6			Leaves
8/4/2009	E	9	9:46	Primavera	3			Dirt
8/4/2009	E	9	9:47	Roca Vista	6			Leaves
8/4/2009	E	9	9:49	Cavren	3			Dirt
8/4/2009	E	9	9:50	Cavren	0			Dirt
8/4/2009	E	9	9:51	Lobos Marinos	13			Leaves
8/4/2009	E	9	10:03	Lobos Marinos	23			Leaves
8/4/2009	E	9	10:05	San Antonio	11			Dirt
8/4/2009	E	9	10:19	Allossandro	8			Leaves
					206	6.25	9	
8/4/2009	R	10	10:23	Ola Vista	10			Leaves
8/4/2009	R	10	10:27	Las Palmas	13			Leaves
8/4/2009	R	10	10:29	La Costa	14			Dirt
8/4/2009	R	10	10:33	Monte Cristo	3			Leaves
8/4/2009	R	10	10:37	Las Palmas	2			Dirt
8/4/2009	R	10	10:47	Ola Vista	12			Dirt
8/4/2009	R	10	10:49	Ave Montalvo	19			Leaves
8/4/2009	R	10	11:07	Calafia	2			Dirt
8/4/2009	R	10	11:08	S. Ola Vista	2			Dirt
8/4/2009	R	10	11:10	Del Pacifoco	0			Dirt
8/4/2009	R	10	11:14	Callecita	5			Leaves
8/4/2009	R	10	11:19	Junipero	8			Leaves
8/4/2009	R	10	11:28	junipero	11			Dirt
8/4/2009	R	10	11:29	Cornellio	16			Dirt
8/4/2009	R	10	11:32	Ramona	9			Dirt
8/4/2009	R	10	11:47	San Antonio	14			Dirt
					140	3	6.25	
8/6/2009	E	4	3:30	Ave Pico	0			Trash/Leaf/Dirt
8/6/2009	E	4	3:41	Via Pico Plaza	0			Trash/Leaf/Dirt
8/6/2009	E	4	3:54	Los Milinos	8			Trash/Leaf/Dirt
8/6/2009	E	4	4:01	Calle Bonito	0			Trash/Leaf
8/6/2009	E	4	4:02	Calle Valle	0			Trash/Leaf/Dirt
8/6/2009	E	4	4:08	De La Estrella	2			Trash/Leaf/Dirt
8/6/2009	E	4	4:30	Presidio	0			Leaf

**CITY OF SAN CLEMENTE
STREET SWEEPING DEBRIS COLLECTION STUDY
2009-CYCLE 3**

E = Early Morning, R = Residential, P = Posted								
Date	Freq.	Route #	Time	Street Name	# Parked Vehicles	Debris (weight)	Debris (volume)	Debris Composition
8/6/2009	E	4	4:55	Ave La Pata	0			Trash/Leaf
8/6/2009	E	4	3:35	El Camino Real	0			Leaves
8/6/2009	E	4	3:44	Camino Capistrano	0			Dirt
8/6/2009	E	4	3:49	Camino De Estrella	0			Leaves
8/6/2009	E	4	3:53	Camino De Los Mares	0			Dirt
8/6/2009	E	4	4:03	Camino De Los Mares	0			Leaves
8/6/2009	E	4	4:15	Camino De Estrella	0			Leaves
8/6/2009	E	4	4:16	Camino De Estrella	0			Leaves
8/6/2009	E	4	4:25	El Camino Real	0			Dirt
8/6/2009	E	4	4:30	Ave Pico	0			Leaves
8/6/2009	E	4	4:34	El Camino Real	0			Dirt
8/6/2009	E	4	4:43	Magdalena	10			Leaves
8/6/2009	E	4	4:49	El Camino Real	0			Dirt
8/6/2009	E	4	5:25	El Camino Real	3			Dirt
8/6/2009	E	4	5:45	El Camino Real	0			Leaves
8/6/2009	E	4	5:59	Del Mar	7			Dirt
8/6/2009	E	4	7:03	Camino Capistrano	16			Leaves
8/6/2009	E	4	7:09	Camino Capistrano	12			Leaves
8/6/2009	E	4	7:44	Salvador	3			Leaves
8/6/2009	E	4	7:46	Valinda	0			Dirt
8/6/2009	E	4	8:00	Alledo	3			Dirt
8/6/2009	E	4	8:03	Cayenta	2			Dirt
8/6/2009	E	4	8:14	San Juan	5			Leaves
8/6/2009	E	4	8:17	La Esperanza	3			Dirt
					74			
8/6/2009	R	4	6:31	Ave Caballeros	0			Trash/Leaf/Dirt
8/6/2009	R	4	6:34	El Oriente	8			Leaf
8/6/2009	R	4	6:35	La Cuesta	12			Trash/Leaf/Dirt
8/6/2009	R	4	6:43	La Paz	7			Trash/Leaf/Dirt
8/6/2009	R	4	6:51	Camino San Clemente	1			Trash/Dirt/Rock
8/6/2009	R	4	6:56	Via Socorro	16			Leaf
8/6/2009	R	4	7:00	Via Ballena	31			Leaf
8/6/2009	R	4	7:10	Via San Andreas	12			Dirt/Leaf
8/6/2009	R	4	7:20	Via Cascadita	10			Dirt
8/6/2009	R	4	7:22	Calle Tinaja	6			Leaf/Dirt
8/6/2009	R	4	7:24	Via Senda	3			Leaf/Dirt
8/6/2009	R	4	8:19	N. LaEsperanza	4			Trash/Leaf/Dirt
8/6/2009	R	4	8:21	El Lavante	13			Trash/Leaf/Dirt
8/6/2009	R	4	8:23	Ave Pizarro	1			Leaf/Dirt
8/6/2009	R	4	8:29	Terraza Vista Bahia	2			Leaf/Dirt
8/6/2009	R	4	8:31	Ave Patero De Oro	17			Leaf/Dirt
8/6/2009	R	4	8:36	Calle Bella Loma	4			Leaf
8/6/2009	R	4	8:41	Seguro	2			Leaf/Dirt

**CITY OF SAN CLEMENTE
STREET SWEEPING DEBRIS COLLECTION STUDY
2009-CYCLE 3**

E = Early Morning, R = Residential, P = Posted								
Date	Freq.	Route #	Time	Street Name	# Parked Vehicles	Debris (weight)	Debris (volume)	Debris Composition
8/6/2009	R	4	9:00	Posted Alley	4			Trash/Dirt
8/6/2009	R	4	9:30	San Carlos	0			Leaf
8/6/2009	R	4	9:31	Calle Cortez	14			Leaf/Dirt
8/6/2009	R	4	9:39	Calle Sonora	11			Leaf/Dirt
8/6/2009	R	4	10:30	De La Estrella	11			Leaf
8/6/2009	R	4	10:35	Ave Sierra	27			Leaf/Dirt
8/6/2009	R	4	10:37	La Placentia	9			Dirt
8/6/2009	R	4	10:40	Ave Los Flores	10			Leaf/Dirt
8/6/2009	R	4	10:45	Campo	7			Leaf/Dirt
8/6/2009	R	4	10:50	Revuelta Court	4			Leaf/Dirt
8/6/2009	R	4	10:51	Ave Sierra	17			Leaf/Dirt
8/6/2009	R	4	10:54	De La Estrella	8			Leaf/Dirt
8/6/2009	R	4	10:57	Calle Redondel	31			Leaf/Dirt
					302	10.5	9.25	
8/6/2009	R	12	8:20	Avenida Cordillera	2			Leaves
8/6/2009	R	12	8:23	La Esperanza	0			Dirt
8/6/2009	R	12	8:27	Ave Arlena	6			Dirt
8/6/2009	R	12	8:52	Calle Alcazar	4			Leaves
8/6/2009	R	12	9:17	Calle Alcazar	0			Dirt
8/6/2009	R	12	9:18	Lobos Marineros	1			Dirt
8/6/2009	R	12	9:20	Ave Verde	3			Leaves
8/6/2009	R	12	9:41	Via Avila	4			Dirt
8/6/2009	R	12	11:31	Ave Cordoba	13			Leaves
8/6/2009	R	12	11:41	Via La Jolla	11			Dirt
8/6/2009	R	12	11:44	Via Catalina	0			Leaves
8/6/2009	R	12	11:48	Via Esperanza	4			Leaves
8/6/2009	R	12	11:49	Ave Buena Suerte	3			Leaves
8/6/2009	R	12	11:50	San Juan	9			Leaves
					60		4.5	
8/10/2009	R	13	9:05	Canasta	1			Dirt
8/10/2009	R	13	9:10	Campana	1			Leaves
8/10/2009	R	13	9:13	Vaquero	0			Leaves
8/10/2009	R	13	9:13	Vicente	6			Leaves
8/10/2009	R	13	9:27	Vquero	14			Dirt
8/10/2009	R	13	9:32	Grande Vista	36			Dirt
8/10/2009	R	13	9:43	Quieto	3			Dirt
8/10/2009	R	13	9:47	Alendra	16			Leaves
8/10/2009	R	13	9:49	Alendra	7			Leaves
8/10/2009	R	13	9:51	Quieto	4			Leaves
8/10/2009	R	13	9:53	Grande Villa	12			Leaves
8/10/2009	R	13	10:06	Via Cascadita	2			Dirt
8/10/2009	R	13	10:07	Via Monega	3			Dirt

**CITY OF SAN CLEMENTE
STREET SWEEPING DEBRIS COLLECTION STUDY
2009-CYCLE 3**

E = Early Morning, R = Residential, P = Posted

Date	Freq.	Route #	Time	Street Name	# Parked Vehicles	Debris (weight)	Debris (volume)	Debris Composition
8/10/2009	R	13	10:10	Via Alegue	18			Dirt
8/10/2009	R	13	10:13	Via Montezuma	7			Leaves
8/10/2009	R	13	10:18	Via Arboleda	6			Dirt
8/10/2009	R	13	10:20	Via Casa Loma	13			Leaves
8/10/2009	R	13	10:24	Via Santo Thomas	11			Dirt
8/10/2009	R	13	10:28	Via Montecito	12			Dirt
8/10/2009	R	13	10:32: an	Via Verbena	12			Leaves
8/10/2009	R	13	10:36	Via Vistosa	14			Dirt
8/10/2009	R	13	11:11	Via Montego	17			Dirt
8/10/2009	R	13	11:13	Via San Gorgonio	9			Dirt
8/10/2009	R	13	11:16	Via San Gorgonio	0			Leaves
8/10/2009	R	13	11:18	Via San Jacinto	8			Dirt
8/10/2009	R	13	11:20	Via San Jacinto	5			Leaves
8/10/2009	R	13	11:21	Via San Gorgonio	6			Leaves
8/10/2009	R	13	11:22	Via Corbina	3			Dirt
8/10/2009	R	13	11:27	Via Montecito	4			Leaves
					250	4.25	5	
8/11/2009	E	2	3:50	El Camino Real	0			Dirt
8/11/2009	E	2	5:21	Marquita	0			
8/11/2009	E	2	5:24	Palizada	0			Dirt
8/11/2009	E	2	5:26	El Camino Real	0			
8/11/2009	E	2	5:27	Serra	0			
8/11/2009	E	2	5:28	El Camino Real	0			
8/11/2009	E	2	5:30	Cabrillo	7			Dirt
8/11/2009	E	2	5:32	El Camino Real	2			
8/11/2009	E	2	5:33	Granada	0			Dirt
8/11/2009	E	2	5:35	Granada	6			
8/11/2009	E	2	5:36	Victoria	0			Dirt
8/11/2009	E	2	5:39	Mateo	0			
8/11/2009	E	2	5:41	El Camino Real	0			Dirt
8/11/2009	E	2	5:42	Algodon	0			
8/11/2009	E	2	5:43	El Camino Real	0			Dirt
8/11/2009	E	2	6:10	Del Mar	18			
8/11/2009	E	2	6:20	Ola Vista	2			Dirt
8/11/2009	E	2	6:27	Fuente	0			
8/11/2009	E	2	6:28	El Prado	4			
8/11/2009	E	2	6:30	Del Poniente	6			
8/11/2009	E	2	7:04	Camino De Los Mares	0			Dirt
8/11/2009	E	2	7:05	Camino Vera Cruz	0			
8/11/2009	E	2	7:08	El Camino Real	3			
8/11/2009	E	2	7:20	El Camino Real	0			
8/11/2009	E	2	7:30	Calle Agua	23			Dirt
					71			

**CITY OF SAN CLEMENTE
STREET SWEEPING DEBRIS COLLECTION STUDY
2009-CYCLE 3**

E = Early Morning, R = Residential, P = Posted

Date	Freq.	Route #	Time	Street Name	# Parked Vehicles	Debris (weight)	Debris (volume)	Debris Composition
8/11/2009	R	6	7:32	Calle Agua	16			
8/11/2009	R	6	7:34	Camino De Los Mares	0			Dirt
8/11/2009	R	6	7:37	Camino De Estrella	10			
8/11/2009	R	6	7:40	Camino De Estrella	1			
8/11/2009	R	6	7:41	Mira Costa	17			Dirt
8/11/2009	R	6	8:17	Sarmentosa	0			
8/11/2009	R	6	8:21		19			
8/11/2009	R	6	8:31	Llano	3			
8/11/2009	R	6	8:36	Cerra	5			Dirt
8/11/2009	R	6	8:40	Sarmentosa	0			
8/11/2009	R	6	8:41	Vera Cruz	0			
8/11/2009	R	6	8:51	Calle Heraldo	9			Dirt
8/11/2009	R	6	9:00	Canasta	0			
8/11/2009	R	6	9:24	Blanco	11			Dirt
8/11/2009	R	6	9:26	Penasco	9			Leaves
8/11/2009	R	6	9:28	Penasco	12			Dirt
8/11/2009	R	6	9:32	Blanco	0			Dirt
8/11/2009	R	6	9:35	Calle Heraldo	5			Dirt
8/11/2009	R	6	9:38	Campo Raso	7			Leaves
8/11/2009	R	6	9:46	Campo Raso	8			Dirt
8/11/2009	R	6	9:49	Calle Heraldo	4			Dirt
8/11/2009	R	6	9:50	Caminante	3			Leaves
8/11/2009	R	6	9:51	Pandero	2			Leaves
8/11/2009	R	6	9:52	Calle Heraldo	2			Leaves
8/11/2009	R	6	9:54	Vera Cruz	0			Dirt
8/11/2009	R	6	10:01	Vera Cruz	0			Leaves
8/11/2009	R	6	10:05	Bello Panorama	7			Dirt
8/11/2009	R	6	10:07	Vera Cruz	0			Dirt
8/11/2009	R	6	10:11	Sarmentosa	7			Dirt
8/11/2009	R	6	10:17	Camino Del Mar	0			Dirt
8/11/2009	R	6	10:19	Grande Vista	0			Leaves
8/11/2009	R	6	10:42	Ave Monterey	0			
8/11/2009	R	6	10:43	Mateo	6			
8/11/2009	R	6	10:47	Ave Algodon	1			
8/11/2009	R	6	10:53	Madrid	7			
8/11/2009	R	6	10:55	Villa Vista	2			
8/11/2009	R	6	11:00	Ola Vista	5			
8/11/2009	R	6	11:02	Victoria	4			
8/11/2009	R	6	11:05	Corona	2			
8/11/2009	R	6	11:08	Monterey	0			
8/11/2009	R	6	11:09	Capistrano	3			
8/11/2009	R	6	11:12	Santa Ana	0			
8/11/2009	R	6	11:13	Alameda	2			
8/11/2009	R	6	11:25	Morid	6			
8/11/2009	R	6	11:26	Elena	1			

**CITY OF SAN CLEMENTE
STREET SWEEPING DEBRIS COLLECTION STUDY
2009-CYCLE 3**

E = Early Morning, R = Residential, P = Posted								
Date	Freq.	Route #	Time	Street Name	# Parked Vehicles	Debris (weight)	Debris (volume)	Debris Composition
8/11/2009	R	6	11:27	Cazador	2			
8/11/2009	R	6	11:28	Victoria	1			
8/11/2009	R	6	11:29	Cazador	3			
8/11/2009	R	6	11:30	Marid	4			
8/11/2009	R	6	11:33	Lazador				
					206	4	7.25	
8/13/2009	E	4	3:30	Ave Pico	0			Trash Leaf/Dirt
8/13/2009	E	4	3:38	Via Pico Plaza	0			Leaf/Dirt
8/13/2009	E	4	3:42	Los Molinas	0			Leaf/Dirt
8/13/2009	E	4	3:50	Calle Valle	5			Trash/Leaf/Dirt
8/13/2009	E	4	4:03	Calle Bonito	0			Leaf/Dirt
8/13/2009	E	4	4:08	Los Obrajero	0			Trash/Leaf
8/13/2009	E	4	4:13	De La Estrella	1			Trash/Leaf
8/13/2009	E	4	4:34	Presidio	0			Trash/Leaf
8/13/2009	E	4	4:52	Avenida La Pata	0			Leaf/Dirt
						9.5	2.6	
8/13/2009	E	4	4:06	Camino De Los M	0			Dirt
8/13/2009	E	4	4:10	Camino De Los Mares	0			Dirt
8/13/2009	E	4	4:28	Camino De Estrella	0			Dirt
8/13/2009	E	4	4:29	Camino De Estrella	0			Leaves
8/13/2009	E	4	4:37	Camino Capistrano	0			Leaves
8/13/2009	E	4	4:45	El Camino Real	0			Leaves
8/13/2009	E	4	5:08	El Camino Real	0			Dirt
8/13/2009	E	4	5:18	El Camino Real	0			Dirt
8/13/2009	E	4	5:26	El Camino Real	0			Leaves
8/13/2009	E	4	6:05	Del Mar	16			Dirt
8/13/2009	E	4	6:27	Canada	0			Dirt
8/13/2009	E	4	6:29	El Camino Real	0			Leaves
8/13/2009	E	4	6:56	El Camino Real	3			Dirt
8/13/2009	E	4	9:02	Seville	3			Dirt
8/13/2009	E	4	9:07	Ave Palizada	4			Leaves
					32	9.5	2.6	
8/13/2009	R	16	9:11	N. Ola Vista	1			Leaves
8/13/2009	R	16	9:16	Ave Palizada	2			Dirt
8/13/2009	R	16	9:18	Lena	1			Dirt
8/13/2009	R	16	9:24	Miramar	1			Leaves
8/13/2009	R	16	9:34	Serra	0			Leaves
8/13/2009	R	16	9:48	Cabrillo	4			Leaves
8/13/2009	R	16	9:52	Corte	0			Dirt
8/13/2009	R	16	9:55	Granada	2			Dirt
8/13/2009	R	16	10:00	Encino	8			Leaves
8/13/2009	R	16	10:07	Granada	4			Dirt
8/13/2009	R	16	10:10	Acebo	0			Dirt

**CITY OF SAN CLEMENTE
STREET SWEEPING DEBRIS COLLECTION STUDY
2009-CYCLE 3**

E = Early Morning, R = Residential, P = Posted								
Date	Freq.	Route #	Time	Street Name	# Parked Vehicles	Debris (weight)	Debris (volume)	Debris Composition
8/13/2009	R	16	10:25	Ave Rosa	0			Dirt
8/13/2009	R	16	10:26	Victoria	3			Dirt
8/13/2009	R	16	10:33	Ola Vista	5			Leaves
8/13/2009	R	16	10:41	Santa Barbara	0			Dirt
8/13/2009	R	16	10:42	Victoria	3			Leaves
8/13/2009	R	16	10:45	Elena	2			Dirt
8/13/2009	R	16	10:51	Cazador Lane	1			Leaves
8/13/2009	R	16	10:55	Victoria	5			Leaves
8/13/2009	R	16	10:58	Monterey	0			Dirt
8/13/2009	R	16	10:59	Santa Ana	0			Leaves
8/13/2009	R	16	11:01	Capistrano	0			Dirt
8/13/2009	R	16	11:06	Corona	1			Dirt
8/13/2009	R	16	11:08	Monterey	0			Dirt
8/13/2009	R	16	11:12	Madrid	3			Leaves
8/13/2009	R	16	11:15	Algadon	3			Dirt
8/13/2009	R	16	11:18	Mateo	0			Dirt
8/13/2009	R	16	11:20	Monterey	0			Dirt
					49	5.25	4.5	
TOTALS					2662	102.75	105.65	



Memorandum Engineering

Monday, November 10, 2014

7.C.

To: Coastal Advisory Committee
From: Mary Vondrak, Senior Management Analyst
Subject: Poche AB411 Monitoring Season Update

The Poche UV Treatment Facility 2014 season began on April 15th. The County of Orange owns the facility and contracts with South Coast Water District to handle the day to day maintenance and operations. The City of San Clemente has a cost share agreement with the County to cover 60% of the operations and maintenance expense. County staff performs regular water quality sampling of the system. Samples are not collected when the system is shut down for maintenance or during times of high tides. Samples are collected before the UV treatment, after treatment, at the discharge point, in the pond, at the pond outlet to the ocean, and in the ocean 25 yards up coast and down coast (Attachment 1). Monitoring results for this season indicate an improvement over the previous year (Attachment 2).

The data shows that the UV treatment improves runoff water quality by decreasing bacteria concentrations, typically to a level that is well below the water quality objective (Attachment 2, Table 1). During the 2014 operating season Poche beach was posted twice for a total of 6 days. This is an improvement over the previous year when Poche was posted for 55 days. Looking further back, from 2006-2012, Poche was posted each summer for an average of 135 days. The posting dates for this operating season are noted in Table 1 with a red asterisk. The first occurred after a period of high tide events and subsequent berm maintenance to release ponded water blocking the beach access. The falconer was active on the day of the sampling. The second date was during a period when the falconer was not working at the beach and had just started working the landfill. The County reported approximately 200 gulls observed on the sampling date at Poche. County reports indicate a lack of gull presence at Poche now that the falconry program has been established at the landfill and the coyote decoys are being used on a regular basis.

The Poche Clean Beach Project winter operations will begin on November 14th. The schedule consists of weekly exercising approximately 24 hours

per week, with at least 1 backwash per week, to keep filter media operationally stable. The facility will otherwise be offline until April 2015 for storm event periods, and required offseason maintenance.

Attachment 1
Poche UV Treatment Facility County of Orange Monitoring Locations
May 2014 – October 2014

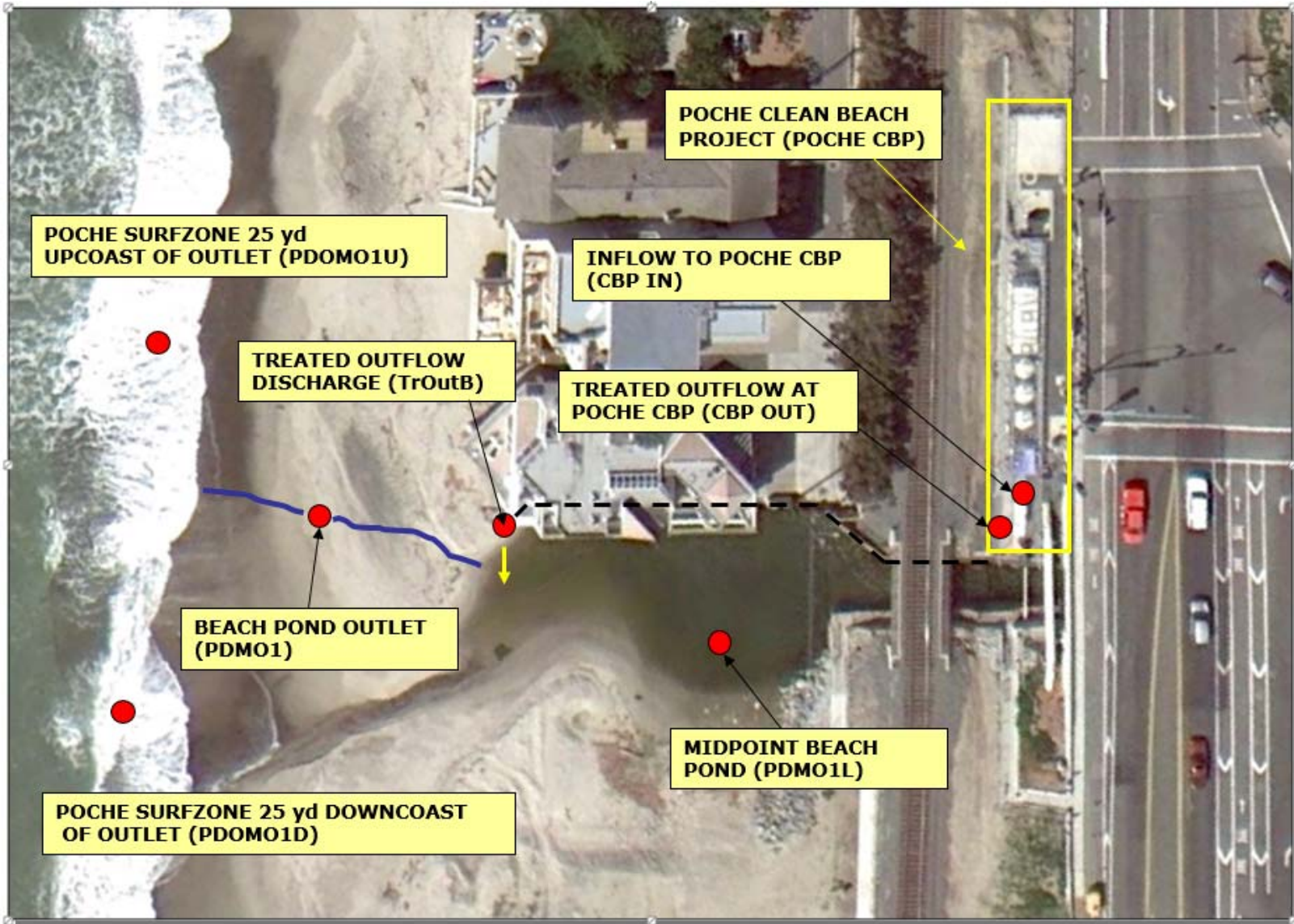


Table 2: Poche UV Treatment System Percent Removal of Bacteria

Parameter	Total Coliform			Fecal Coliform			Enterococcus			
	Date Sampled	Influent	Effluent	% Removal	Influent	Effluent	% Removal	Influent	Effluent	% Removal
<i>single sample std CFU/100ml</i>		<i>10,000 CFU/100ml</i>			<i>400 CFU/100ml</i>			<i>104 CFU/100ml</i>		
5/6/2014	220	20	90.9%	30	<9	83.3%	220	<9	97.7%	
5/8/2014	320	50	84.4%	90	<9	94.4%	400	9	97.8%	
5/12/2014	80	30	62.5%	50	<9	90.0%	200	<9	97.5%	
5/20/2014	1,200	9	99.3%	330	9	97.3%	340	<9	98.5%	
5/22/2014	1,600	20	98.8%	300	9	97.0%	290	9	96.9%	
6/3/2014	3,200	9	99.7%	350	<9	98.6%	490	9	98.2%	
6/19/2014	50	9	82.0%	99	20	79.8%	110	<9	95.5%	
7/2/2014	2,200	80	96.4%	350	9	97.4%	330	<9	98.5%	
7/9/2014	2,700	90	96.7%	1,300	<9	99.6%	1,260	9	99.3%	
7/17/2014	140	30	78.6%	190	<9	97.4%	290	<9	98.3%	
7/22/2014	1,700	280	83.5%	380	9	97.6%	940	110	88.3%	
7/31/2014	50,000	120	99.8%	500	9	98.2%	1,560	40	97.4%	
8/14/2014	3,200	60	98.1%	1,110	40	96.4%	1,000	9	99.1%	
8/21/2014	1,500	99	93.4%	220	40	97.7%	50	<9	90.0%	
8/25/2014	1,000	9	99.1%	99	<9	94.9%	40	<9	87.5%	
9/2/2014	6,500	280	95.7%	680	50	92.6%	780	120	84.6%	
9/25/2014	2,300	80	96.5%	290	20	93.1%	600	9	98.5%	
10/1/2014	2,000	110	94.5%	140	9	93.6%	430	30	93.0%	
10/16/2014	3,300	160	95.2%	370	20	94.6%	460	40	91.3%	
10/22/2014	2,700	190	93.0%	800	40	95.0%	860	60	93.0%	

Source: County of Orange Watersheds



Excellence
Integrity
Service

COUNTY OF ORANGE
HEALTH CARE AGENCY/ENVIRONMENTAL HEALTH
SOCWA (Doheny Outfall) Ocean Bacteriological Monitoring Program

8.A.

Enterococcus (ENT), Fecal Coliform (FC), Total Coliform (TC) Colony Forming Units / 100 ml Sample
 NS, -99, or blank spaces = no data available
 Date posted: 11/10/14

Beach Name	Lab	StationID	Location	Type	8/18/2014	8/20/2014	8/28/2014	9/2/2014	9/3/2014	9/8/2014	9/11/2014	9/13/2014
San Clemente	RA	S-15	Poche Beach	Enterococcus	<10	<10	=17	<20	=10	<10	=20	
San Clemente	RA	S-15	Poche Beach	Fecal Coliforms	<10	<10	=33	<20	<10	<10	=10	
San Clemente	RA	S-15	Poche Beach	Total Coliforms	<10	<10	=149	<20	=10	=20	=40	
San Clemente City Beach	RA	S-17	North Beach	Enterococcus	<10	<10	<20	<10	<10	=10	=20	
San Clemente City Beach	RA	S-17	North Beach	Fecal Coliforms	<10	=20	<20	<10	<10	<10	=20	
San Clemente City Beach	RA	S-17	North Beach	Total Coliforms	=10	<10	<20	<10	<10	=10	=80	
San Clemente City Beach	RA	S-19	450' North of Pier	Enterococcus	<10	=20	=80	=20	<10	=10	=20	
San Clemente City Beach	RA	S-19	450' North of Pier	Fecal Coliforms	=10	=10	=60	=80	=50	<10	=80	
San Clemente City Beach	RA	S-19	450' North of Pier	Total Coliforms	=20	<10	=160	=20	=40	=20	=110	
San Clemente State Beach	RA	S-21	Avenida Calafia	Enterococcus	<2	<2	<20	<10	<10	<10	<10	
San Clemente State Beach	RA	S-21	Avenida Calafia	Fecal Coliforms	<2	<2	<20	<10	<10	<10	<10	
San Clemente State Beach	RA	S-21	Avenida Calafia	Total Coliforms	<2	<2	<20	<10	<10	<10	=20	
San Clemente State Beach	RA	S-23	Las Palmeras	Enterococcus	<2	<2	<20	<10	<2	<10	<10	
San Clemente State Beach	RA	S-23	Las Palmeras	Fecal Coliforms	<2	<2	<20	<10	<2	<10	<10	
San Clemente State Beach	RA	S-23	Las Palmeras	Total Coliforms	<2	<2	<20	<10	>2	=10	=30	

AB411 Single Sample Standards	
Total Coliforms	10,000
Fecal Coliforms	400
Enterococci	104
Fecal to Total Coliform ratio	1,000 total coliform, if ratio exceeds 0.1
AB411 30-Day Geometric Mean Standards	
Total Coliforms	1,000
Fecal Coliforms	200
Enterococci	35

All values expressed in cfu/100 ml.



CITY OF SAN CLEMENTE • ENVIRONMENTAL PROGRAMS OCTOBER 2014 CLEAN OCEAN PROGRAM UPDATE

8.B.

Meetings

10/9	Coastal Advisory Committee Meeting	(M. Vondrak)
10/14	Watershed Task Force Meeting	(D. McIntosh)
10/16	OC Recycling Coordinators Meeting	(D. McIntosh)
10/20	CR&R's South County Recyclers Meeting	(D. McIntosh)
10/24	Leadership Report Meeting	(D. McIntosh)

Public Outreach

PUBLIC OUTREACH

10/15	Beach Clean-Up by SC Business Mazena	(D. McIntosh)
10/22	Beach Clean-Up by construction crew of outlet	(D. McIntosh)

PRINT

10/16	San Clemente Journal ad, "Little Gnome Fact Remove Turf and Install a Smart Irrigation Controller with Water\$mart Rebates"	
10/16	San Clemente Times ad, "Have You Heard? In the last 3 months, San Clemente residents removed over 9,000 sq. ft. of turf! "	
10/16	San Clemente Times ad, "Have You Heard? In the last 3 months, San Clemente residents removed over 9,000 sq. ft. of turf! "	

INTERNET

October	SC Sustainability October Newsletter	
10/1-31	City of San Clemente www.san-clemenete.org - "Remember, Only Rain Down the Drain"	
10/1-31	SC Times ad, "OverwateringisOut.org"	

TELEVISION/MEDIA EXPOSURE

10/6,13,20,27	Community Calendar, Cox Ch. 30 - Universal Waste Collection Service	
10/6,13,20,27	Community Calendar, Cox Ch. 30 - What To Do If You See A Spill	
October	Cox Channel 30/854 - Curiosity Quest - videos various episodes	
October	Cox Channel 30/854 - Trash in the Pacific with Captain Charles Moore video	
October	Cox Channel 30/854 - Around Town Prima Deshecha Watershed Tour	
On going	PSA- Public Service Announcement on Cox Ch. 30, "The Ocean Begins at Your Front Door - Litter"	
On going	PSA- Public Service Announcement on Cox Ch. 30, "The Ocean Begins at Your Front Door - General"	

Staff Training

10/7	Webinar: Keep California Beautiful's K-12 Recycling	(D. McIntosh)
10/27	Webinar: Hazardous Waste Laws and Regulations	(D. McIntosh)

Street Sweeping Program

Material Collected/Recycled: 278.25 cubic yards

Water Quality Code Compliance

Verbal Warnings	0
Notices of Non-Compliance	1
Administrative Citations	2
Stop Work	0

Recycling & Solid Waste Program

Red Tag Violation Warnings	183
Waste Management Plans	71
Complaints and Calls Received	237
Abandoned Bulky Item Requests	129

Attachments

August	City of San Clemente 2014 Solid Waste & Recycling Tons Summary August Report
October	City of San Clemente Environmental Code Enforcement Action October 2014 Reports
10/16	San Clemente Journal ad, "Little Gnome Fact Remove Turf and Install a Smart Irrigation Controller
10/16	San Clemente Times ad, "Have You Heard? In the last 3 months, San Clemente residents
10/16	San Clemente Times ad, "Have You Heard? In the last 3 months, San Clemente residents



**CITY OF SAN CLEMENTE 2013-2014
SOLID WASTE & RECYCLING TONS SUMMARY REPORT
AUGUST 2014**

RESIDENTIAL

MONTH	7000						
	CURBSIDE DIVERTED	CURBSIDE LANDFILLED	CURBSIDE DIVERSION %	MULTI FAM DIVERTED	MULTI FAM LANDFILLED	MULTI FAM DIVERSION %	TOTAL RESI DIVERSION %
Aug-13	1,316.62	1,666.39	44.14%	182.03	172.85	51.29%	44.90%
Sep-13	1,252.34	1,561.68	44.50%	147.28	138.86	51.29%	45.13%
Oct-13	1,262.64	1,609.30	43.96%	153.31	145.59	51.29%	44.66%
Nov-13	1,116.22	1,519.91	42.34%	142.33	135.15	51.29%	43.20%
Dec-13	1,118.11	1,829.63	40.69%	148.39	140.91	51.29%	41.70%
Jan-14	1,227.47	1,664.62	42.44%	138.33	131.35	51.29%	43.20%
Feb-14	953.40	1,396.84	40.57%	148.16	140.70	51.29%	41.74%
Mar-14	1,133.45	1,478.91	43.39%	164.11	155.85	51.29%	44.25%
Apr-14	1,255.61	1,555.37	44.67%	159.80	151.74	51.29%	45.33%
May-14	1,314.64	1,652.69	44.30%	156.10	148.14	51.31%	44.96%
Jun-14	1,267.25	1,530.37	45.30%	136.21	129.33	51.30%	45.82%
Jul-14	1,400.29	1,749.82	44.45%	171.35	162.73	51.29%	45.11%
Aug-14	1,223.49	1,553.12	44.06%	165.54	157.20	51.29%	44.82%
2014 YTD TOTAL	9,775.60	12,581.74	43.72%	1,239.60	1,177.04	51.29%	44.46%

COMMERCIAL

MONTH	2030									
	COMMERCIAL DIVERTED	COMMERCIAL ROLL OFF DIVERTED	PUBLIC WORKS	BIO SOLIDS	SELF HAUL GREENWASTE	TOTAL COMMERCIAL DIVERTED	COM DIRECT LANDFILLED	COMM ROLL OFF RESIDUE/DIRECT LANDFILLED	TOTAL COMMERCIAL LANDFILLED	TOTAL COM DIVERSION %
Aug-13	122.97	257.76	61.94	335.62	337.00	1,115.29	1,049.26	106.83	1,156.09	49.10%
Sep-13	110.93	299.44	88.45	307.94	337.00	1,143.76	955.54	71.00	1,026.54	52.70%
Oct-13	118.70	296.18	60.77	326.05	293.39	1,095.09	1,002.93	99.56	1,102.49	49.83%
Nov-13	108.28	265.16	33.38	299.65	293.39	999.86	931.55	74.60	1,006.15	49.84%
Dec-13	100.89	308.07	16.56	349.26	293.39	1,068.17	910.20	72.00	982.20	52.10%
Jan-14	107.44	304.71	33.03	316.30	227.66	989.14	954.47	74.94	1,029.41	49.00%
Feb-14	91.01	235.20	35.37	354.53	227.66	943.77	866.06	46.62	912.68	50.84%
Mar-14	105.57	384.78	16.20	302.26	227.66	1,036.47	996.84	82.40	1,079.24	48.99%
Apr-14	104.71	422.98	73.42	256.87	181.89	1,039.87	965.15	77.89	1,043.04	49.92%
May-14	117.49	382.44	73.30	287.23	181.89	1,042.35	1,042.98	91.93	1,134.91	47.87%
Jun-14	118.76	478.83	35.83	206.28	181.89	1,021.59	1,050.54	118.74	1,169.28	46.63%
Jul-14	134.67	443.73	9.61	169.03	0.00	757.04	1,052.72	115.02	1,167.74	39.33%
Aug-14	134.74	434.52	9.76	187.67	0.00	766.69	1,036.33	111.13	1,147.46	40.05%
2014 YTD TOTAL	914.39	3,087.19	286.52	2,080.17	1,228.65	7,596.92	7,965.09	718.67	8,683.76	46.66%

INCLUDES MRF DIVERTED & SOURCE SEPARATED

C&D PROCESSING

MONTH	4060			4060			PRIMA SELF HAUL			
	CR&R SJC MRF DIVERTED	CR&R SJC MRF LANDFILLED	CRT STANTON DIVERTED	CRT STANTON LANDFILLED	SOURCE SEPARATED C&D DIVERTED	ROLL OFF LANDFILLED	TOTAL C&D DIVERSION %	PRIMA SELF HAUL DIVERTED	PRIMA SELF HAUL LANDFILLED	TOTAL PRIMA DIVERSION %
Aug-13	345.28	107.58	0.00	0.00	90.81	8.59	78.96%	807.93	198.58	80.27%
Sep-13	232.63	81.31	0.00	0.00	107.10	0.00	80.69%	696.42	167.19	80.64%
Oct-13	315.50	84.28	0.00	0.00	257.50	0.00	87.18%	708.79	171.37	80.53%
Nov-13	172.12	64.57	0.00	0.00	157.42	0.00	83.62%	709.44	168.80	80.78%
Dec-13	197.54	67.18	0.00	0.00	173.65	0.00	84.68%	693.45	169.05	80.40%
Jan-14	205.02	75.62	5.37	0.63	178.61	0.00	83.61%	674.77	167.43	80.12%
Feb-14	190.89	68.36	0.00	0.00	62.43	0.00	78.75%	754.97	188.74	80.00%
Mar-14	172.19	62.60	0.00	0.00	165.04	0.00	84.34%	780.07	189.44	80.46%
Apr-14	301.13	114.48	0.00	0.00	145.87	0.00	79.61%	704.84	171.72	80.41%
May-14	283.79	101.71	0.00	0.00	194.97	0.00	82.48%	879.33	215.05	80.35%
Jun-14	229.13	104.78	0.00	0.00	173.47	0.00	79.35%	844.42	205.99	80.39%
Jul-14	360.97	127.05	0.00	0.00	301.16	0.00	83.90%	739.68	173.17	81.03%
Aug-14	188.33	80.13	0.00	0.00	165.00	0.00	81.51%	933.21	225.63	80.53%
2014 YTD TOTAL	1,931.45	734.73	5.37	0.63	1,386.55	0.00	81.88%	6,311.29	1,537.17	80.41%

OVERALL TOTAL

MONTH	TOTAL RECYCLED	TOTAL LANDFILLED	OVERALL DIVERSION
Aug-13	3,879.13	3,310.08	53.96%
Sep-13	3,600.54	2,976.58	54.74%
Oct-13	3,812.92	3,113.03	55.05%
Nov-13	3,315.32	2,894.58	53.39%
Dec-13	3,419.12	2,988.97	53.36%
Jan-14	3,430.51	3,069.06	52.78%
Feb-14	3,072.93	2,707.32	53.16%
Mar-14	3,473.06	2,966.04	53.94%
Apr-14	3,628.32	3,036.35	54.44%
May-14	3,896.49	3,252.50	54.50%
Jun-14	3,698.00	3,139.75	54.08%
Jul-14	3,750.76	3,380.51	52.60%
Aug-14	3,465.05	3,163.54	52.27%
12 MO TOTAL	42,563.02	36,688.23	53.71%
2014 YTD TOTAL	28,415.12	24,715.07	53.48%

3040 FOOD WASTE PROGRAM
21.17
21.01
20.09
17.93
19.81
11.80
19.31
21.73
21.20
25.31
25.93
20.27
22.79
247.18
168.34

THIS REPORT REFLECTS THE MOST UP-TO-DATE INFORMATION FOR ALL MONTHS LISTED.

City of San Clemente
Chronology by Officer Case Type and Action Type
For the Period 10/1/2014 thru 10/31/2014

Case No. Date Opened Status	Case Name Case Type Sub-Type	Site Address Parcel No.	Watershed
--	---	------------------------------------	------------------

ENV-SEDIMENT

ENV2014-0074 10/1/2014 COMPLAINT TAKEN	15312 ENVIRONMENTAL ENV-SEDIMENT	170 AVENIDA DE LA PAZ 057-062-26	M00
---	---	-------------------------------------	-----

<i>Date</i>	<i>Action Type</i>	<i>Action Notes</i>
10/1/2014	\$ ADMIN CITATION ISSUED	(10/1/2014 3:55:11 PM BH) Action Created (10/1/2014 3:55 PM BH) Advised to: 1) clean street and gutter (MS4) of all sediment by Monday 10/20/14 @ 8am 2) Implement proper required sediment control BMPs by Monday 10/20/14 @ 8am.

ENV2014-0075 10/7/2014 COMPLAINT TAKEN	15313 ENVIRONMENTAL ENV-SEDIMENT	100 Avenida Mateo 058-093-24	M00
---	---	---------------------------------	-----

<i>Date</i>	<i>Action Type</i>	<i>Action Notes</i>
10/7/2014	NOTICE OF NON-COMPLIANCE	(10/7/2014 3:19:18 PM BH) Action Created (10/7/2014 3:19 PM BH) Advised to: 1) discontinue all prohibited discharges to the MS4 2) Implement proper required sediment and animal waste control BMPs 3) remove all weeds, animal waste, and trash and debris 4) Do routine checks on property

ENV2014-0078 10/28/2014 COMPLAINT TAKEN	15314 ENVIRONMENTAL ENV-SEDIMENT	170 AVENIDA DE LA PAZ 057-062-26	M00
--	---	-------------------------------------	-----

<i>Date</i>	<i>Action Type</i>	<i>Action Notes</i>
10/28/2014	\$ ADMIN CITATION ISSUED	(10/29/2014 9:38 AM BH) 3 violations @ \$200 = \$600 (10/29/2014 9:44 AM BH) Advised to: 1) Clean street, gutter and stormdrain of all sediment by Wednesday, November 5, 2014 (7-days) or nuisance abatement will be handled by the City and back billed to property owner. 2) implement proper required sediment control BMPs by Wednesday, November 5, 2014 (7-Days)

3 Sub Total **ENV-SEDIMENT**

3 Total of ALL Actions



Memorandum Engineering Division

Wednesday, November 10, 2014

9.A.

To: Coastal Advisory Committee
From: Mary Vondrak, Senior Management Analyst
Subject: **Potential Future Agenda Items**

The following is a list of potential topics that the CAC is considering for future meetings, based on input from CAC members during prior meetings.

December

1. Land Use Plan (LUP) Update
2. NPDES Stormwater Permit Annual Update (Tentative)
3. Poche Action Plan Update (Tentative)

January

1. Trafalgar Canyon Outlet Predesign Project (Tentative)
2. To be determined

February

1. To be determined