



Memorandum Engineering Division

November 5, 2014

To: Planning Commission
From: Tom Frank, Transportation Engineering Manager *TF*
Subject: **Parking Prohibition on Calle Sarmentoso**
Copies: Thomas Frank, Transportation Engineering Manager
William E. Cameron, Public Works Director / City Engineer
Thomas Bonigut, Assistant City Engineer
Joseph McClintock, Police Services Sergeant

ISSUE:

A request to consider forwarding a recommendation to the City Council to approve a parking prohibition on Calle Sarmentoso .

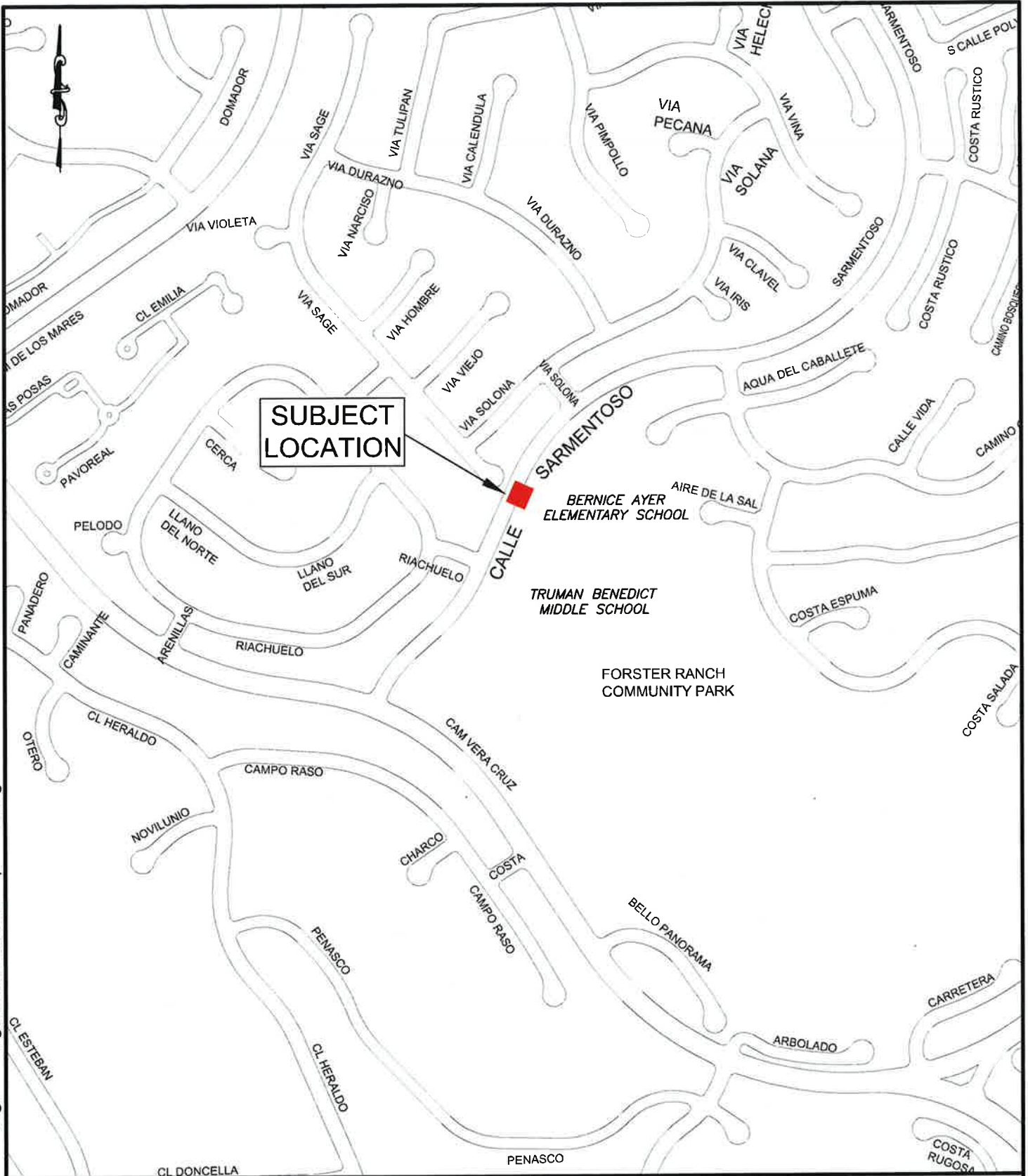
BACKGROUND:

Calle Sarmentoso is a collector street with parking permitted along portions of the east side of the street. Staff received a request to prohibit parking on the east side of Calle Sarmentoso. The concern is that vehicles parked on the east side of the street near the crosswalk at Bernice Ayer Middle School block a portion of the recently restriped Class II bicycle lane. There is non-codified existing red curb for approximately 85 feet. However, due to the alignment of the bicycle lane pavement markings, an additional 37 feet of red curb is needed to eliminate parked vehicles from blocking the bicycle lane. Based on the site review, staff recommends prohibiting parking on the east side of Calle Sarmentoso starting at a point at the north end of radius of the Bernice Ayer Middle School driveway exit and ending 122' north of the starting point.

RECOMMENDATION:

STAFF RECOMMENDS THAT the Planning Commission forward to the City Council a recommendation to prohibit parking at the following location: Calle Sarmentoso, east side, starting at a point at the north end of radius of the school driveway exit and ending 122' north of the starting point.

Attachments: A. Vicinity Map
 B. Location Map



**SUBJECT
LOCATION**

BERNICE AYER
ELEMENTARY SCHOOL

TRUMAN BENEDICT
MIDDLE SCHOOL

FORSTER RANCH
COMMUNITY PARK

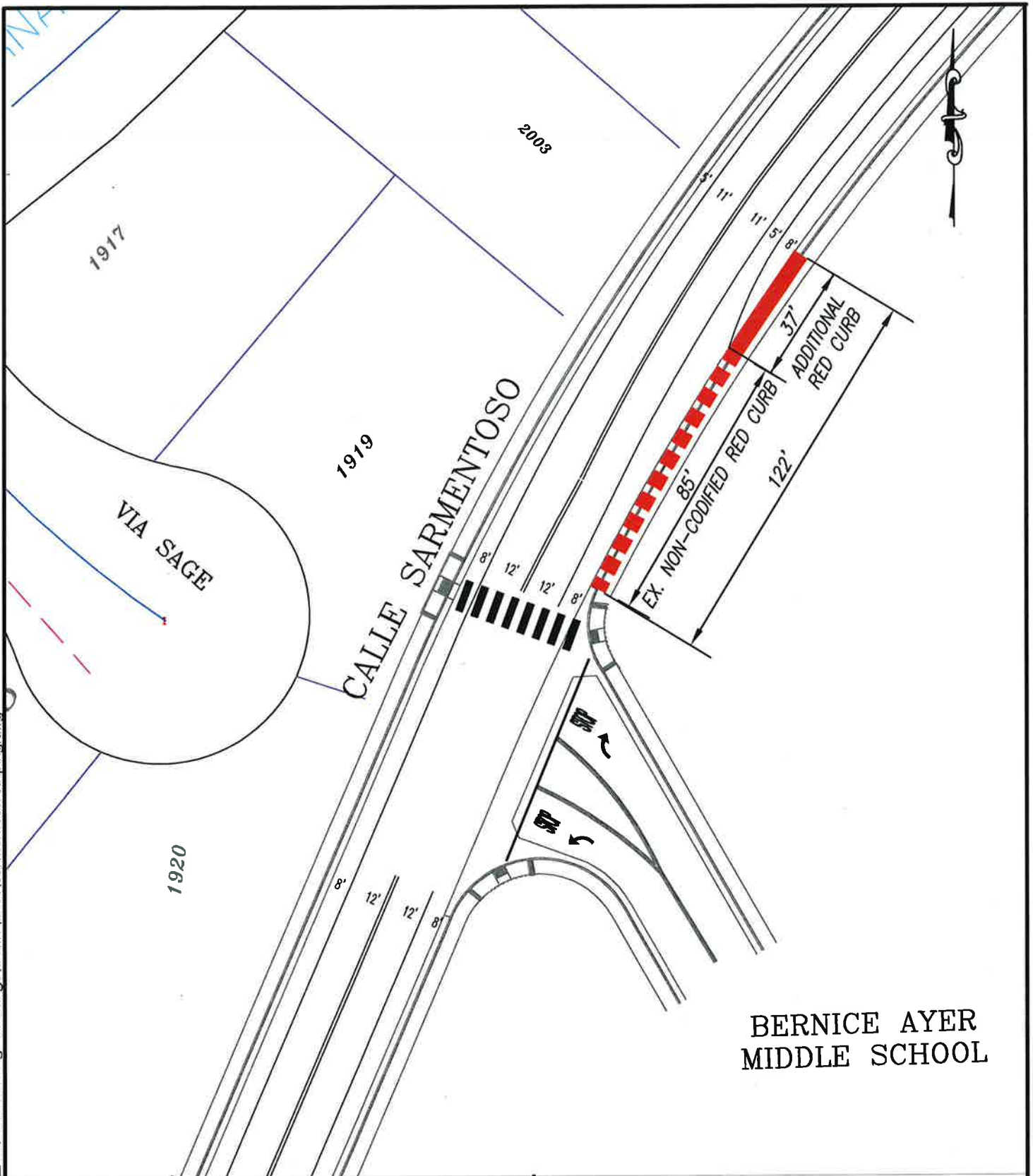
\\cd\graphics_cd\autocad engr drawings\traffic\location map 2014.dwg



CITY OF SAN CLEMENTE
 910 Calle Negocio, Suite 100
 San CLEMENTE, CA 92673
 Tel (949) 361-6100
 Fax (949) 361-8316

VICINITY MAP

**PARKING PROHIBITION
ON CALLE SARMENTOSO**



\\c:\graphics\graphics_cdl\autocad engr drawings\traffic\2014\sarmientoso striping.dwg



CITY OF SAN CLEMENTE
 910 Calle Negocio, Suite 100
 San CLEMENTE, CA 92673
 Tel (949) 361-6100
 Fax (949) 361-8316

LOCATION MAP

PARKING PROHIBITION
ON CALLE SARMENTOSO