



**AGENDA REPORT**  
**SAN CLEMENTE CITY COUNCIL MEETING**  
 Meeting Date: June 19, 2012

Agenda Item 9A  
 Approvals: \_\_\_\_\_  
 City Manager \_\_\_\_\_  
 Dept. Head \_\_\_\_\_  
 Attorney \_\_\_\_\_  
 Finance \_\_\_\_\_

**Department:** Public Works / Engineering Division *OB*  
**Prepared By:** Thomas Frank, Transportation Engineering Manager

**Subject:** *APPROVE RESOLUTIONS FOR PARKING PROHIBITIONS ON PLAZA A LA PLAYA.*

**Summary:** Staff investigated the possibility of improving the beach access conditions on Plaza a la Playa near the Riviera Beach access point. During a favorable beach day, many beach patrons unload beachgoers and equipment directly in front of the beach access to reduce the walking distance for their family and friends. Once unloaded, drivers then park their vehicles and walk back to the beach. On occasion, beach visitors have received tickets for stopping in the red curbed area while unloading cargo. In an effort to improve the public access to the beach, staff investigated possible locations for a loading zone near the beach access point on Plaza a la Playa. Staff held a meeting with the adjacent property owners to solicit input on the creation of a beach loading zone on northern cul-de-sac of Plaza a la Playa near the beach access point and discussed the issue with Police Services.

The attending residents represented nine of the properties on the northern cul-de-sac of Plaza a la Playa. Staff also received input from the President of the Riviera Home Owners Association (H.O.A.). The attending residents were primarily concerned with people parking their vehicles in no parking zones for long periods of time, double parking, leaving their vehicles unattended in the no parking zones, and improper golf cart parking that impedes safe traffic operations. The residents feel the existing red curb more effectively dissuades people from leaving their vehicle and feels that creating a loading zone would not improve parking or access in the area. The President of the Riviera H.O.A. agreed with these recommendations including:

1. Increasing the enforcement of existing parking prohibitions specifically during times when school is out and the area is enjoying nice beach weather.
2. Keeping the current red curbs and not implementing a loading zone.
3. Adopting parking prohibition for an additional 20 foot length on the east side of Plaza a la Playa north of Avenida La Costa. The subject curb is currently painted red but was not approved by the City. The additional red curb improves the line of sight for this congested and heavily traveled pedestrian corridor.
4. Continuing to look for opportunities to create a pedestrian walkway on Avenida La Costa.

Police Services reviewed and concurred with the above recommendations, and added a recommendation to designate the existing red curb as "Fire Lanes," with review and approval from the Orange County Fire Authority. Creating fire lanes would make parking in these areas a violation of CVC 22500.1 and would raise the violation fine from \$43 to \$68 dollars. A memorandum from Police Services is attached.

On May 16, 2012, the Planning Commission reviewed this item. The Commissioners noted the importance of beach access and loading zones for the convenience of beach users. They discussed potential solutions including temporarily converting the illegally painted, 20 foot red curb area into a three minute loading area for the summer, and requested the City Council consider moving the fire hydrant to the landscaped island on the street or elsewhere to allow installation of a loading zone at the existing red-curbed beach access point. They acknowledged further study was needed, including contacting the Orange County Fire Authority (OCFA) to discuss fire hydrant locations, determining whether any associated costs could come from the beach parking fund, and determining whether the benefit of creating a beach access loading zone outweighs the line of sight safety issue identified by staff. The Commission unanimously carried a motion to recommend that City Council:

1. Convert the currently illegally-painted red curb area to a three-minute loading zone for the summer, with an evaluation at the end of the summer to determine if the change has had a positive effect.
2. Direct staff to consider holistic methods to create an additional loading zone at the beach access point, including relocating the fire hydrant.

Staff identified two possible locations as shown in the attached Alternate Fire Hydrant Location Map. The fire hydrant can not be relocated to the center landscape median due to an existing sewer manhole located within the median. The cost estimate for relocating the fire hydrant is approximately \$10,000.

Staff also reviewed the issue with OCFA's Deputy Fire Marshal who was satisfied with the existing conditions. If the City Council elects to relocate the existing fire hydrant to create a loading zone, OCFA recommended:

1. Alternative Location No. 2 near the Avenida La Costa as the preferred location.
2. Implement a fire lane adjacent to the new fire hydrant location.

Since staff's recommendations differ from those of the Planning Commission, two sets of recommendations are provided. Note that for the Planning Commission's recommended loading zone, staff included similar restrictions to the loading zone implemented at the T-Street Beach access. If City Council desires to implement the loading zone, the proposed white curbed area would be limited to loading and unloading of passengers only between the hours of 4:00 a.m. and 12:00 a.m. midnight, and parking would be prohibited between the hours of 12:00 a.m. midnight and 4:00am.

9A-2

**Recommended**

**Action:**

PLANNING COMMISSION RECOMMENDS THAT THE CITY COUNCIL:

1. Convert the illegally-painted red curb area a three minute loading zone, with an evaluation at the end of the summer to determine if the change has had a positive effect;
2. Direct staff to consider holistic methods to create an additional loading zone at the beach access point, including relocating the fire hydrant; and
3. Adopt Resolution No. \_\_\_\_ , entitled "A RESOLUTION OF THE CITY COUNCIL OF THE CITY OF SAN CLEMENTE, CALIFORNIA, AMENDING MASTER TRAFFIC RESOLUTION NO. 1846, ESTABLISHING 'RESTRICTED PARKING AREAS' ON PLAZA A LA PLAYA."

STAFF RECOMMENDS THAT THE CITY COUNCIL:

1. Approve the addition of 20 feet of parking prohibition north of the existing red curb located on the northeast corner of Plaza a la Playa and Avenida La Costa;
2. Direct staff on whether to further investigate relocating the fire hydrant to Alternate Location No. 2; and
3. Adopt Resolution No. \_\_\_\_ , entitled "A RESOLUTION OF THE CITY COUNCIL OF THE CITY OF SAN CLEMENTE, CALIFORNIA, AMENDING MASTER TRAFFIC RESOLUTION NO. 1846 ESTABLISHING 'NO PARKING AREAS' ON PLAZA A LA PLAYA."

**Fiscal Impact:**

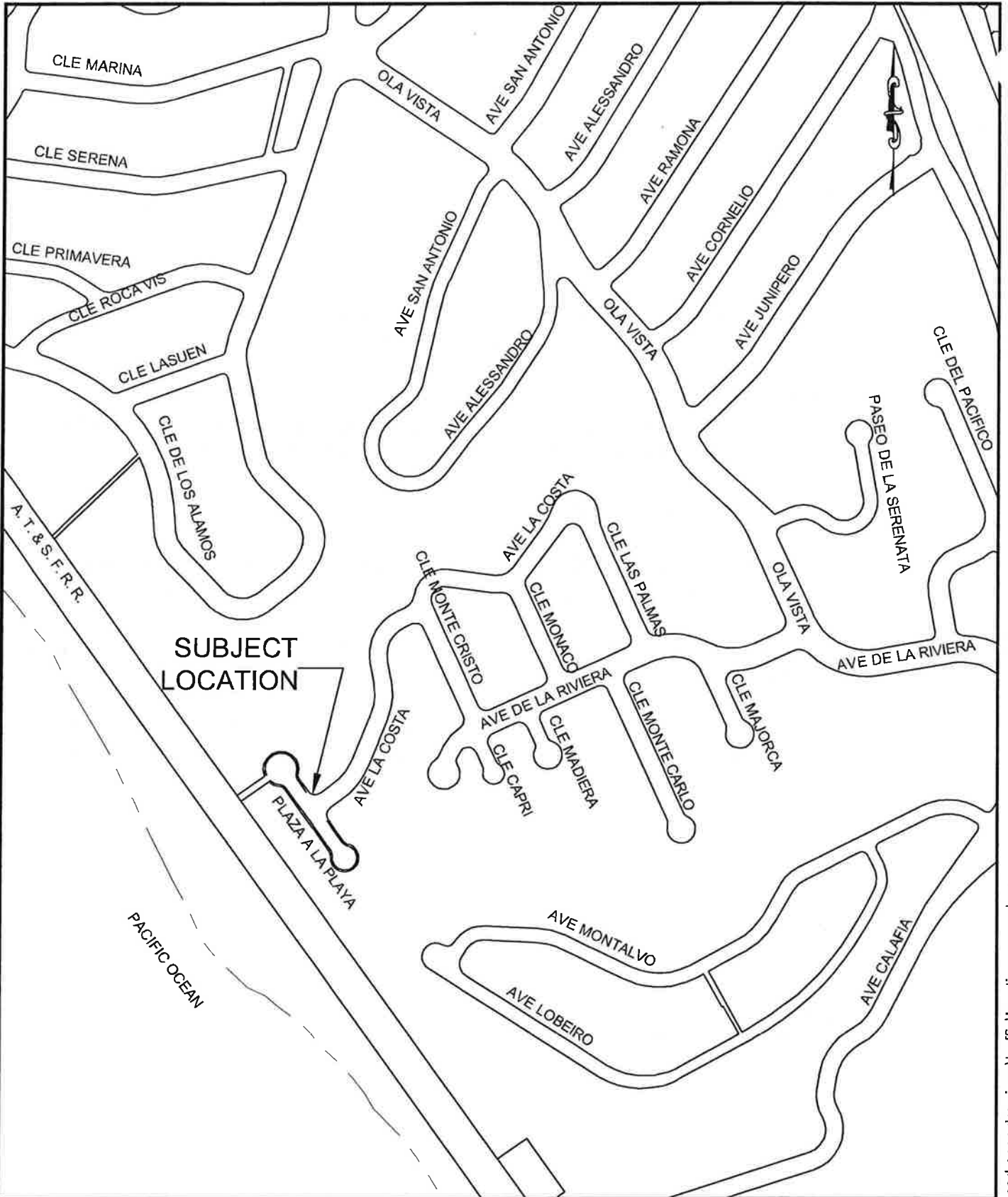
Yes. If Council elects to pursue relocating the existing fire hydrant, the cost estimate is approximately \$10,000 and funds would need to be appropriated from general fund or another funding source.

**Attachments:**

- Vicinity Map
- Location Maps
- Resolutions
- Memorandum from Police Services

**Notification:**

Yes. Nearby residents and Riviera H.O.A. President.



SUBJECT  
LOCATION

PLAZA A LA PLAYA

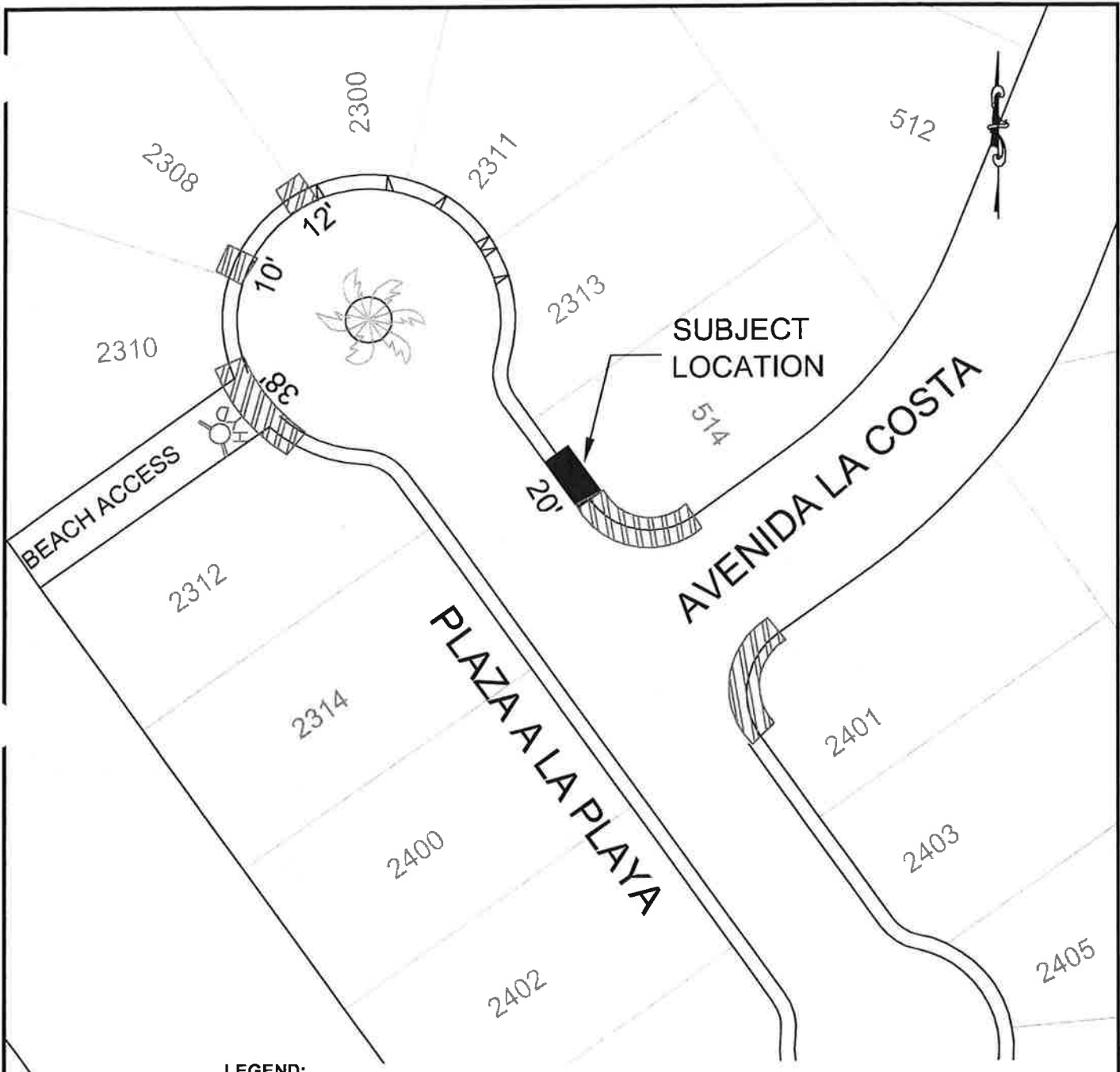


Prepared in the office of  
**City of San Clemente**  
 Engineering Division 910 Calle Negocio  
 Suite 100  
 San Clemente, CA 92673  
 Tel (949) 361-8118  
 Fax (949) 361-8316

VICINITY MAP  
 PLAZA A LA PLAYA  
 PARKING

\\cd\graphics\_c\... \tocald engr drawings\traffic\location maps.dwg

9/11/04



**LEGEND:**



- PROPOSALS FOR EXISTING ILLEGALLY PAINTED RED CURB:

- OPTION 1 CREATE 3-MINUTE PASSENGER LOADING/UNLOADING AND NO-PARKING BETWEEN 12:00 A.M. MIDNIGHT AND 4:00 A.M.
- OPTION 2 EXISTING RED CURB TO REMAIN IN PLACE, NO-PARKING ANYTIME.



- EXISTING RED CURB TO REMAIN.



- FIRE HYDRANT



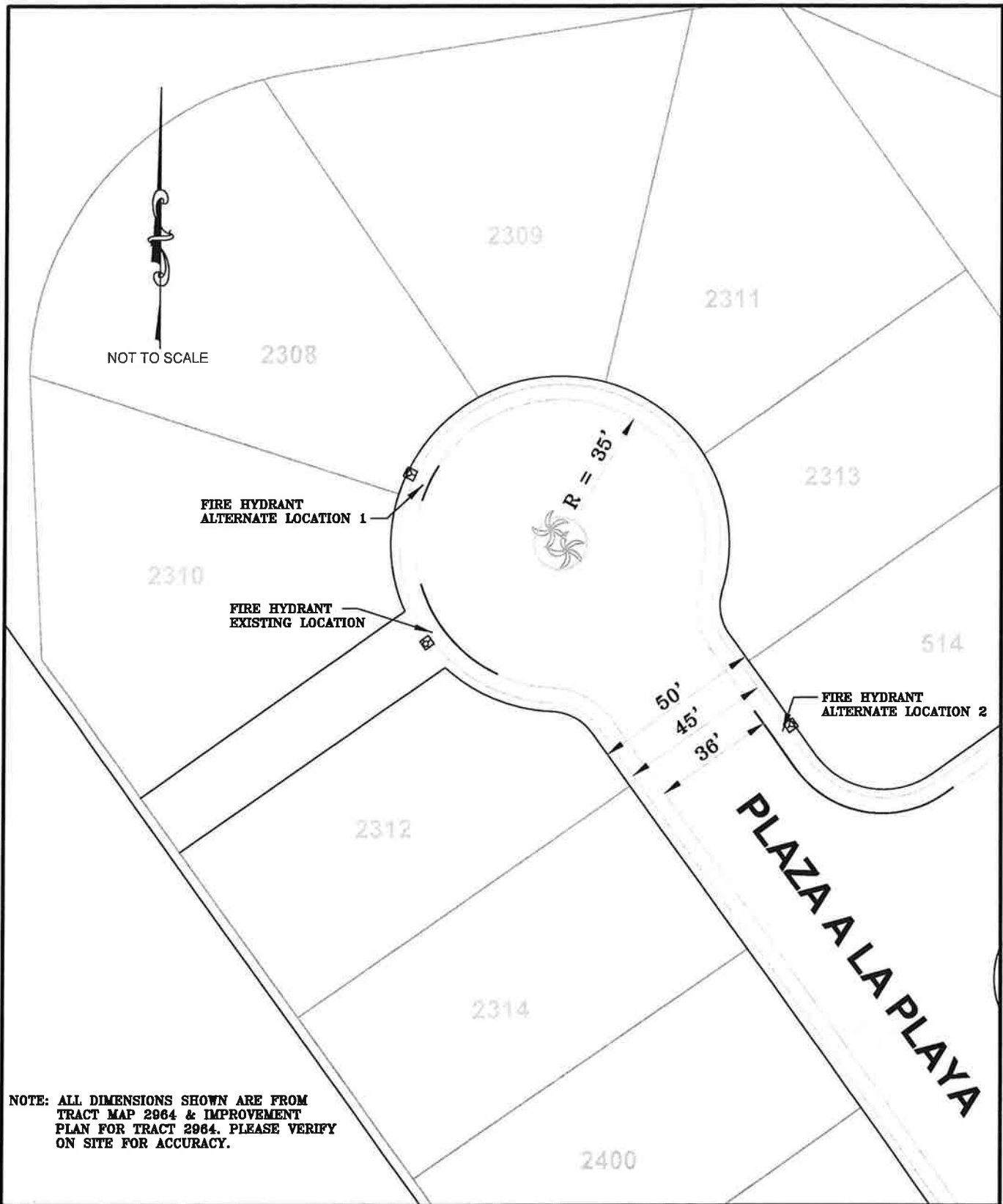
Prepared in the office of

**City of San Clemente**

Engineering Division 910 Calle Negocio  
 Suite 100  
 San Clemente, CA 92673  
 Tel (949) 361-8118  
 Fax (949) 361-8316

**LOCATION MAP**

**PLAZA A LA PLAYA  
 PARKING**



*City of San Clemente*

910 Calle Negocio, Suite 100  
 San Clemente, CA 92673  
 Tel (949) 381-8100  
 Fax (949) 381-8316

**LOCATION MAP**

**Plaza A La Playa  
 Alternate Fire Hydrant Location**

9A-6

RESOLUTION NO. \_\_\_\_\_

**A RESOLUTION OF THE CITY COUNCIL OF THE CITY OF SAN CLEMENTE,  
CALIFORNIA, AMENDING MASTER TRAFFIC RESOLUTION NO. 1846,  
ESTABLISHING "RESTRICTED PARKING AREAS" ON PLAZA A LA PLAYA.**

**WHEREAS**, the City reviews various locations to improve safety and traffic conditions; and

**WHEREAS**, the City of San Clemente Planning Commission ("Planning Commission"), at its regular meeting of May 16, 2012, made a recommendation to the City of San Clemente City Council ("City Council") to approve the parking restrictions at the locations listed below; and

**WHEREAS**, the City Council has considered the recommendation by the Planning Commission, and the information provided by City staff and now wishes to implement the recommended restriction.

NOW, THEREFORE, The City Council of the City of San Clemente does hereby resolve as follows:

Section 1. The above recitals are true and correct.

Section 2. Master Traffic Resolution No. 1846 is hereby amended by adding to Section 28, entitled "Restricted Parking Areas", the following subsections:

28.a-5 Plaza A La Playa, east side, from the northeast curb return of Avenida La Costa in a northerly direction of twenty (20) feet, parking shall be limited to the loading and unloading of passengers only, between the hours of 4:00 a.m. and 12:00 a.m. midnight.

28.a-6 Plaza A La Playa, east side, from the northeast curb return of Avenida La Costa in a northerly direction of twenty (20) feet, parking shall be prohibited between the hours of 12:00 a.m. midnight and 4:00 a.m.

Section 3. The City Clerk shall certify to the passage and adoption of this resolution and enter it into the book of original resolutions.

PASSED AND ADOPTED this \_\_\_\_\_ day of \_\_\_\_\_, \_\_\_\_\_.

ATTEST:

\_\_\_\_\_  
City Clerk of the City of  
San Clemente, California

\_\_\_\_\_  
Mayor of the City of  
San Clemente, California

9A-7

STATE OF CALIFORNIA )  
COUNTY OF ORANGE ) §  
CITY OF SAN CLEMENTE )

I, JOANNE BAADE, City Clerk of the City of San Clemente, California, do hereby certify that Resolution No. \_\_\_\_\_ was adopted at a regular meeting of the City Council of the City of San Clemente held on the \_\_\_\_\_ day of \_\_\_\_\_, \_\_\_\_\_, by the following vote:

AYES:

NOES:

ABSENT:

IN WITNESS WHEREOF, I have hereunto set my hand and affixed the official seal of the City of San Clemente, California, this \_\_\_\_\_ day of \_\_\_\_\_, \_\_\_\_\_.

\_\_\_\_\_  
CITY CLERK of the City of  
San Clemente, California

Approved as to form:

\_\_\_\_\_  
City Attorney



RESOLUTION NO. \_\_\_\_\_

**A RESOLUTION OF THE CITY COUNCIL OF THE CITY OF SAN CLEMENTE,  
CALIFORNIA, AMENDING MASTER TRAFFIC RESOLUTION NO. 1846,  
ESTABLISHING "NO PARKING AREAS" ON PLAZA A LA PLAYA.**

**WHEREAS**, the City reviews various locations to improve safety and traffic conditions; and

**WHEREAS**, the City of San Clemente Planning Commission ("Planning Commission"), at its regular meeting of May 16, 2012, made a recommendation to the City of San Clemente City Council ("City Council") to approve a parking prohibition at the location listed below; and

**WHEREAS**, the City Council has considered the recommendation by the Planning Commission, and the information provided by City staff and now wishes to implement the recommended prohibition.

NOW, THEREFORE, The City Council of the City of San Clemente does hereby resolve as follows:

Section 1. The above recitals are true and correct.

Section 2. Master Traffic Resolution No. 1846 is hereby amended by adding to Section 23, entitled "No Parking Areas", the following subsection:

23.a-19a Plaza A La Playa, east side, from the northeast curb return of Avenida La Costa in a northerly direction of twenty (20) feet.

Section 3. The City Clerk shall certify to the passage and adoption of this resolution and enter it into the book of original resolutions.

PASSED AND ADOPTED this \_\_\_\_\_ day of \_\_\_\_\_, \_\_\_\_\_.

ATTEST:

\_\_\_\_\_  
City Clerk of the City of  
San Clemente, California

\_\_\_\_\_  
Mayor of the City of  
San Clemente, California

9A-9

STATE OF CALIFORNIA )  
COUNTY OF ORANGE ) §  
CITY OF SAN CLEMENTE )

I, JOANNE BAADE, City Clerk of the City of San Clemente, California, do hereby certify that Resolution No. \_\_\_\_\_ was adopted at a regular meeting of the City Council of the City of San Clemente held on the \_\_\_\_\_ day of \_\_\_\_\_, \_\_\_\_\_, by the following vote:

AYES:

NOES:

ABSENT:

IN WITNESS WHEREOF, I have hereunto set my hand and affixed the official seal of the City of San Clemente, California, this \_\_\_\_\_ day of \_\_\_\_\_, \_\_\_\_\_.

\_\_\_\_\_  
CITY CLERK of the City of  
San Clemente, California

Approved as to form:

\_\_\_\_\_  
City Attorney

GA-10



**SHERIFF-CORONER DEPARTMENT  
COUNTY OF ORANGE  
CALIFORNIA**

**SANDRA HUTCHENS  
SHERIFF-CORONER**

**UNDERSHERIFF  
JOHN L. SCOTT**

**EXECUTIVE COMMAND  
TIM BOARD  
RICK DOSTAL  
MIKE JAMES  
JAY LEFLORE**

**COMMANDERS  
MARK BILLINGS  
LEE TRUJILLO  
W. DAVID WILSON**

100 AVENIDA PRESIDIO  
SAN CLEMENTE, CA 92672  
(949) 361-8224

April 26, 2012

To: Scott Kennedy, Sergeant  
From: Eduardo Calderon, Community Services Officer  
ecalderon@ocsd.org  
Subject: Parking and Access Issues at Riviera Beach

---

As we all know, beach access points in San Clemente are heavily used on a year round basis, and are especially taken advantage of during the summer season. Beach access points not only serve as shorter paths to the beach, but also serve as both official and unofficial loading/unloading zones for beach patrons and residents.

Located on a northern cul-de-sac off of Plaza a la Playa, a beach access point to Riviera Beach is the subject of many Sheriff's calls for service during the summer season. As one of my assigned beats, I have experience dealing with many of the parking issues that are generated as a result of vehicles parking and standing in the marked red zone. Other parking violations that I routinely come across are double parking and vehicles being left unattended.

Additionally, the popularity of golf carts creates added parking issues in this area. One of the biggest parking issues caused by golf carts is the traffic hazard created when they park along the center island, which is also painted red.

Ultimately, the creation of a loading zone would not improve parking or access in the area. Keeping the existing red curb would be a more effective and enforceable option.

Below, please find responses to the recommendations made:

1. Increasing the enforcement of existing parking prohibitions specifically during times when school is out and the area is enjoying nice beach weather.
  - i. Currently, parking or standing in the red curb(s) is a violation of SCMC 10.28.040(D): No Parking Anytime/Red Zone and is a \$43.00 citation. In an effort to further dissuade individuals from parking or leaving their vehicles in these areas, I recommend that these red curbs be designated and labeled as "Fire Lanes," with review from the Orange County Fire Authority, and make parking there a violation of CVC 22500.1: Fire Lane, a violation of \$68.00.

**PROUDLY SERVING THE UNINCORPORATED AREAS OF ORANGE COUNTY AND THE FOLLOWING CITIES AND AGENCIES:**

ALISO VIEJO • DANA POINT • LAGUNA HILLS • LAGUNA NIGUEL • LAGUNA WOODS • LAKE FOREST • MISSION VIEJO  
RANCHO SANTA MARGARITA • SAN CLEMENTE • SAN JUAN CAPISTRANO • STANTON • VILLA PARK  
OC PARKS • DANA POINT HARBOR • JOHN WAYNE AIRPORT • OCTA • SUPERIOR COURT



2. Keeping the current red curbs and do not implement a loading zone.
  - i. The current red curbs are more effective at reducing illegally parked vehicles and ultimately, dissuade potential violators more so than a loading zone would.
3. Adopting Parking Prohibition for an additional 20-foot length on the east side of Plaza a la Playa north of Avenida La Costa. The subject curb is currently painted red but was not approved by the City.
  - i. The legality of this curb has been brought to my attention in the past as some residents have stated that other residents illegally painted it frustrated with parking issues.
  - ii. I recommend the adoption of this parking prohibition and for the painting of the curb to be authorized by the City. Additionally, I recommend that this curb be designated as a "Fire Lane."
4. Continuing to look for opportunities to create a pedestrian walkway down Avenida La Costa.

If I can be of any additional assistance in this matter, or any parking/traffic issue(s), please contact me and I will be more than happy to offer any assistance or input I may be able to provide.

9A-12