



**AGENDA REPORT**  
**SAN CLEMENTE CITY COUNCIL MEETING**  
 Meeting Date: June 19, 2012

Agenda Item   60N    
 Approvals: \_\_\_\_\_  
 City Manager \_\_\_\_\_  
 Dept. Head \_\_\_\_\_  
 Attorney \_\_\_\_\_  
 Finance \_\_\_\_\_

**Department:** Public Works / Engineering Division *TF*  
**Prepared By:** Thomas Frank, Transportation Engineering Manager

**Subject:** *APPROVE RESOLUTION FOR PARKING PROHIBITIONS ON EL LEVANTE.*

**Summary:** Staff received a request to prohibit parking on El Levante in order to maintain access for the north end of the Cul-de-sac.

The neighborhood is single-family residential, and the subject block of El Levante is a cul-de-sac. The northerly 250 feet of El Levante is 23 feet wide, parking is allowed on both sides, and the speed limit is 25 mph. The northerly cul-de-sac includes five homes and two vacant lots. Frequently, vehicles park along the curb toward the north end of the cul-de-sac. If two vehicles are parked across from one another, access would be restricted. To maintain adequate access for the cul-de-sac, staff recommends implementing 60 feet of parking prohibition.

Although 46 feet (over two car-lengths) of the proposed parking prohibition would be along the frontage of 154 El Levante, 20 feet (one car-length) of parking would remain along the frontage adjacent to their driveway. The existing street configuration and proposed parking prohibitions are shown the attached proposal map.

While staff considered recommending prohibiting parking along the entire westerly side of the cul-de sac, staff recognizes the importance of preserving on-street parking and focused on addressing only the constricted access towards the end of the cul-de-sac. Further restrictions may be needed in the future, if parking becomes a problem for access along the remaining portion of the northern cul-de-sac.

On February 22, 2012, the Planning Commission reviewed the item and unanimously voted to forward to City Council a recommendation to approve staff's recommendation to implement the parking prohibition. The Planning Commission also requested staff to research Orange County Fire Authority (OCFA) access issues and report back in six months.

Staff reviewed the issue with OCFA's Deputy Fire Marshal, who was in agreement with the proposed recommendation. OCFA also noted that additional red curbing on the west side would improve emergency access; however, OCFA is aware of the balance to maintain existing on-street parking on streets that precede current standards.

*60N-1*

**Recommended**

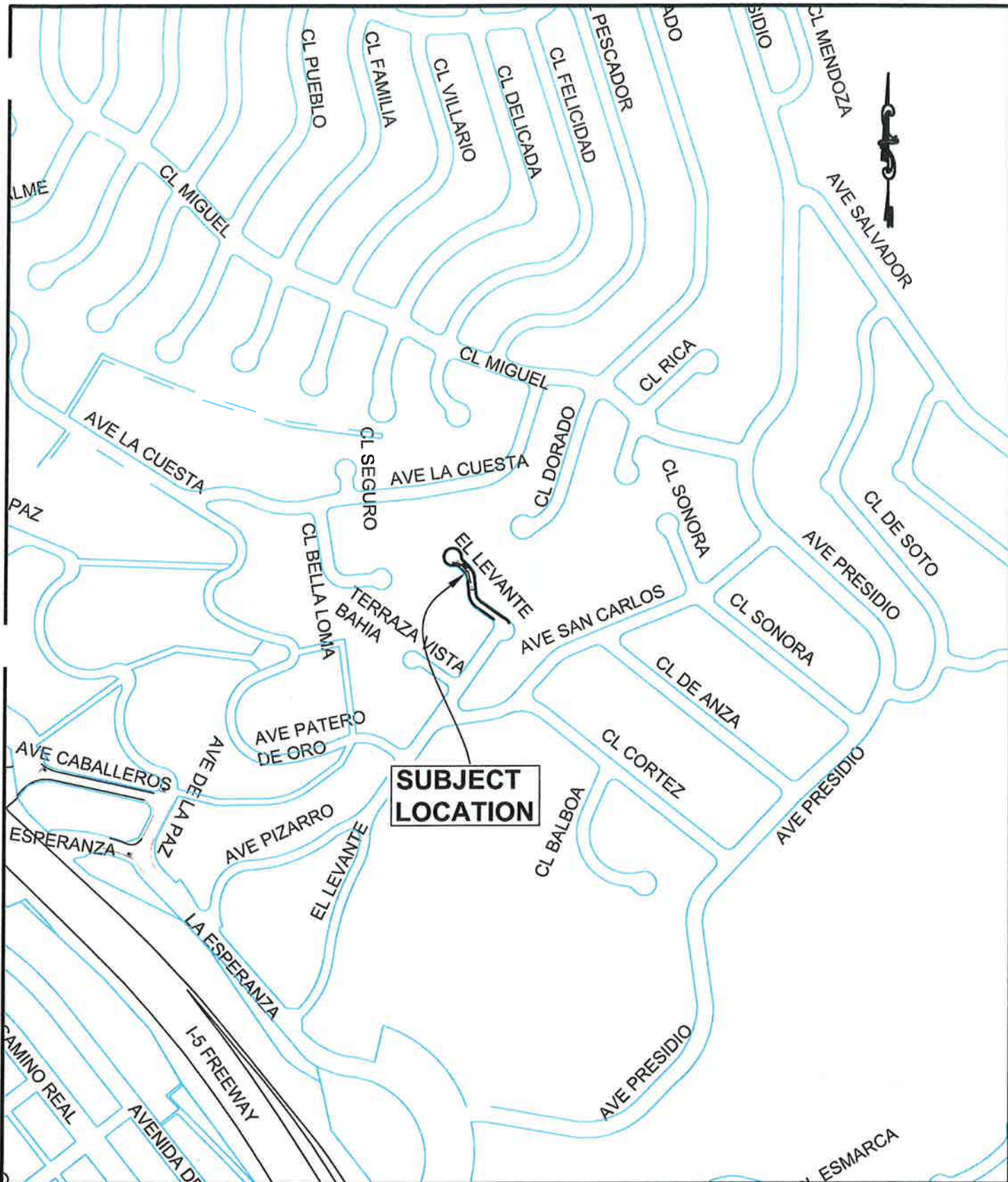
**Action:** STAFF RECOMMENDS THAT THE CITY COUNCIL:

1. Approve sixty feet of parking prohibition for El Levante, west side, from a point twenty (20) feet east side of the driveway curb return at 154 El Levante in a southerly direction for a distance of sixty (60) feet; and
2. Adopt Resolution No. \_\_\_\_\_, entitled "A RESOLUTION OF THE CITY COUNCIL OF THE CITY OF SAN CLEMENTE, CALIFORNIA, AMENDING MASTER TRAFFIC RESOLUTION NO. 1846, ESTABLISHING 'NO PARKING AREAS' ON EL LEVANTE."

**Fiscal Impact:** None.

**Attachments:** Location Map  
Proposal Map  
Resolution

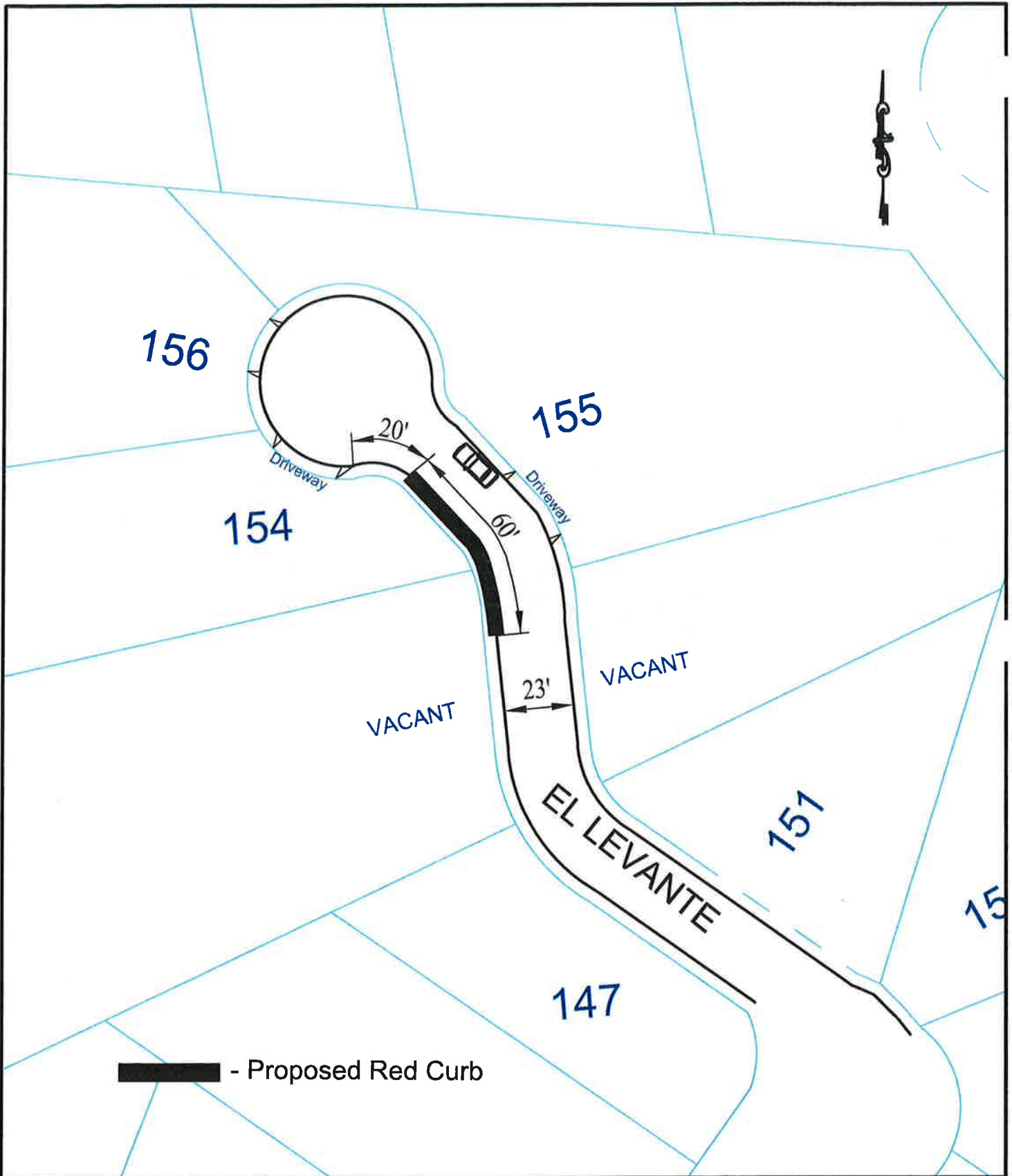
**Notification:** Yes, cul-de-sac Residents.



**CITY OF SAN CLEMENTE**  
 910 Calle Negocio, Suite 100  
 San Clemente, CA 92673  
 Tel (949) 361-6100  
 Fax (949) 361-8316

## LOCATION MAP

PROPOSED PARKING PROHIBITION  
 EL LEVANTE CUL DE SAC



**█** - Proposed Red Curb



**CITY OF SAN CLEMENTE**  
 910 Calle Negocio, Suite 100  
 San Clemente, CA 92673  
 Tel (949) 361-6100  
 Fax (949) 361-8316

**PROPOSAL MAP**

PROPOSED PARKING PROHIBITION  
 EL LEVANTE CUL DE SAC

c:\engr\drawings\traffic\traffic location map.dwg

hcd\graphics\_cd

*6/21/04*

RESOLUTION NO. \_\_\_\_\_

**A RESOLUTION OF THE CITY COUNCIL OF THE CITY OF SAN CLEMENTE,  
CALIFORNIA, AMENDING MASTER TRAFFIC RESOLUTION NO. 1846,  
ESTABLISHING 'NO PARKING AREAS' ON EL LEVANTE.**

**WHEREAS**, the City reviews various locations to improve safety and traffic conditions; and

**WHEREAS**, the City of San Clemente Planning Commission ("Planning Commission"), at its regular meeting of February 22, 2012 made a recommendation to the City of San Clemente City Council ("City Council") to approve a parking prohibition at the location listed below; and

**WHEREAS**, the City Council has considered the recommendation by the Planning Commission, and the information provided by City staff and now wishes to implement the recommended prohibition.

NOW, THEREFORE, The City Council of the City of San Clemente does hereby resolve as follows:

Section 1. The above recitals are true and correct.

Section 2. Master Traffic Resolution No. 1846, Section 23, entitled "No Parking Areas", is hereby amended by adding the following subsection:

23.e-121 El Levante, west side, from a point twenty (20) feet east of the driveway curb return at 154 El Levante in a southerly direction of sixty (60) feet.

Section 3. The City Clerk shall certify to the passage and adoption of this resolution and enter it into the book of original resolutions.

PASSED AND ADOPTED this \_\_\_\_\_ day of \_\_\_\_\_, \_\_\_\_\_.

ATTEST:

\_\_\_\_\_  
City Clerk of the City of  
San Clemente, California

\_\_\_\_\_  
Mayor of the City of  
San Clemente, California

GN-5

STATE OF CALIFORNIA            )  
 COUNTY OF ORANGE            ) §  
 CITY OF SAN CLEMENTE        )

I, JOANNE BAADE, City Clerk of the City of San Clemente, California, do hereby certify that Resolution No. \_\_\_\_\_ was adopted at a regular meeting of the City Council of the City of San Clemente held on the \_\_\_\_\_ day of \_\_\_\_\_, \_\_\_\_\_, by the following vote:

AYES:

NOES:

ABSENT:

IN WITNESS WHEREOF, I have hereunto set my hand and affixed the official seal of the City of San Clemente, California, this \_\_\_\_\_ day of \_\_\_\_\_, \_\_\_\_\_.

\_\_\_\_\_  
 CITY CLERK of the City of  
 San Clemente, California

Approved as to form:

\_\_\_\_\_  
 City Attorney

*6 N-6*