



# Memorandum Engineering Division

March 20, 2013

**To:** Planning Commission  
**From:** Thomas Frank, Transportation Engineering Manager *TF*  
**Subject:** **Parking Prohibitions and Sidewalk Design for 266 Avenida Victoria and 200 block of Calle Seville**  
**Copies:** Thomas Bonigut, Assistant City Engineer  
Scott Kennedy, Police Administrative Sergeant  
David Dendel, Maintenance Services Manager  
David J. Zacker, Senior Traffic Engineer  
Ben Parker, Senior Civil Engineer

---

## **ISSUE:**

**Should the Planning Commission recommend that the City Council approve the conceptual design of street and sidewalks improvements, and prohibit parking at 266 Avenida Victoria & 207 South Calle Seville?**

## **BACKGROUND:**

As a part of the City's Community Development Block Grant (CDBG) Sidewalk Improvement Program, the sidewalk on South Calle Seville between Del Mar and Victoria was identified as a high priority project. South Calle Seville is a two-lane, 40-foot wide residential collector with parking on both sides. Installing a continuous sidewalk behind the existing curb would shorten the driveways at 211 & 209 South Calle Seville, thereby eliminating three private parking spaces. It would also require removing a very large pine tree and constructing a retaining wall along the frontage of 266 Avenida Victoria. To mitigate these issues, staff developed a conceptual design that provides a more walkable sidewalk along the improved area while providing traffic calming for vehicles by reducing the width of the street on the east side of the street. The recommended conceptual design also includes a bulb-out at the intersection at Calle Seville and Avenida Victoria, providing further traffic calming and line-of-sight improvements for the intersection.

A notice was distributed in the area and the conceptual plan alternatives were presented to the public at a workshop held on December 6, 2012. Three attendees provided their comments and supported staff's recommended conceptual design. The residents at 207 Calle Seville feels that

the recommended design would improve their line of sight when exiting their driveway. The residents at 205 South Calle Seville requested that the design retain the public parking along their property frontage considering they have limited on site parking. The attending residents' comments were incorporated into the attached recommended conceptual design.

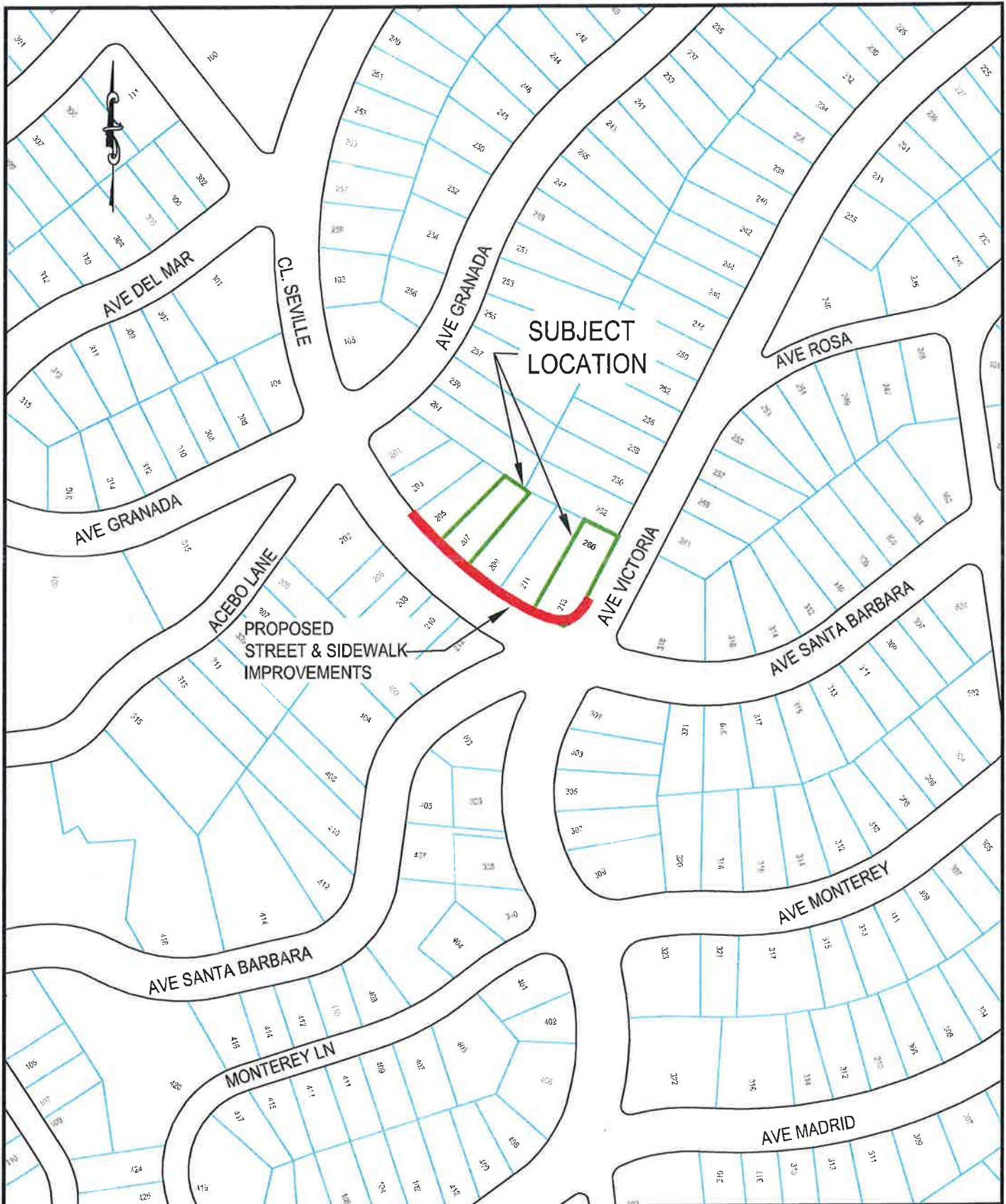
The recommended conceptual design would eliminate approximately 58 linear feet, or three public parking spaces. While three parking spaces would be eliminated by constructing the improvements, one of the parking spaces may have been eliminated, regardless of this project, due to a line-of-sight issue at the Avenida Victoria and Calle Seville intersection. In 2012, staff received complaints regarding sight problems for vehicles traveling westbound on Avenida Victoria looking northerly on Calle Seville. Following the evaluation of the line-of-sight at the intersection, staff was considering a prohibiting parking on the easterly side of Calle Seville from the northeast intersection curb return to a point 20 feet north to provide a clear line-of-sight at the intersection. The recommended conceptual design would improve the line-of-sight at the intersection. When deducting the potential parking prohibitions to address the intersection line of sight, the net loss of public parking would be approximately 38 feet or two parking spaces.

**RECOMMENDATION:**

STAFF RECOMMENDS THAT the Planning Commission forward to the City Council a recommendation to:

- 1) Approve the attached conceptual plan which reduces the width of the east side of South Calle Seville, from the Avenida Victoria curb return to the south property line of 205 South Calle Seville, a distance of 170 feet;
- 2) Prohibit parking on the easterly side of South Calle Seville from the Avenida Victoria curb return to the south side of the driveway at 211 South Calle Seville, a distance of 37 feet; and from the north side of the driveway at 209 South Calle Seville to the south side of the driveway at 207 South Calle Seville, a distance of 21 feet.

Attachments: Location Map  
Sidewalk and Curb Ramp Schematic



Prepared in the office of

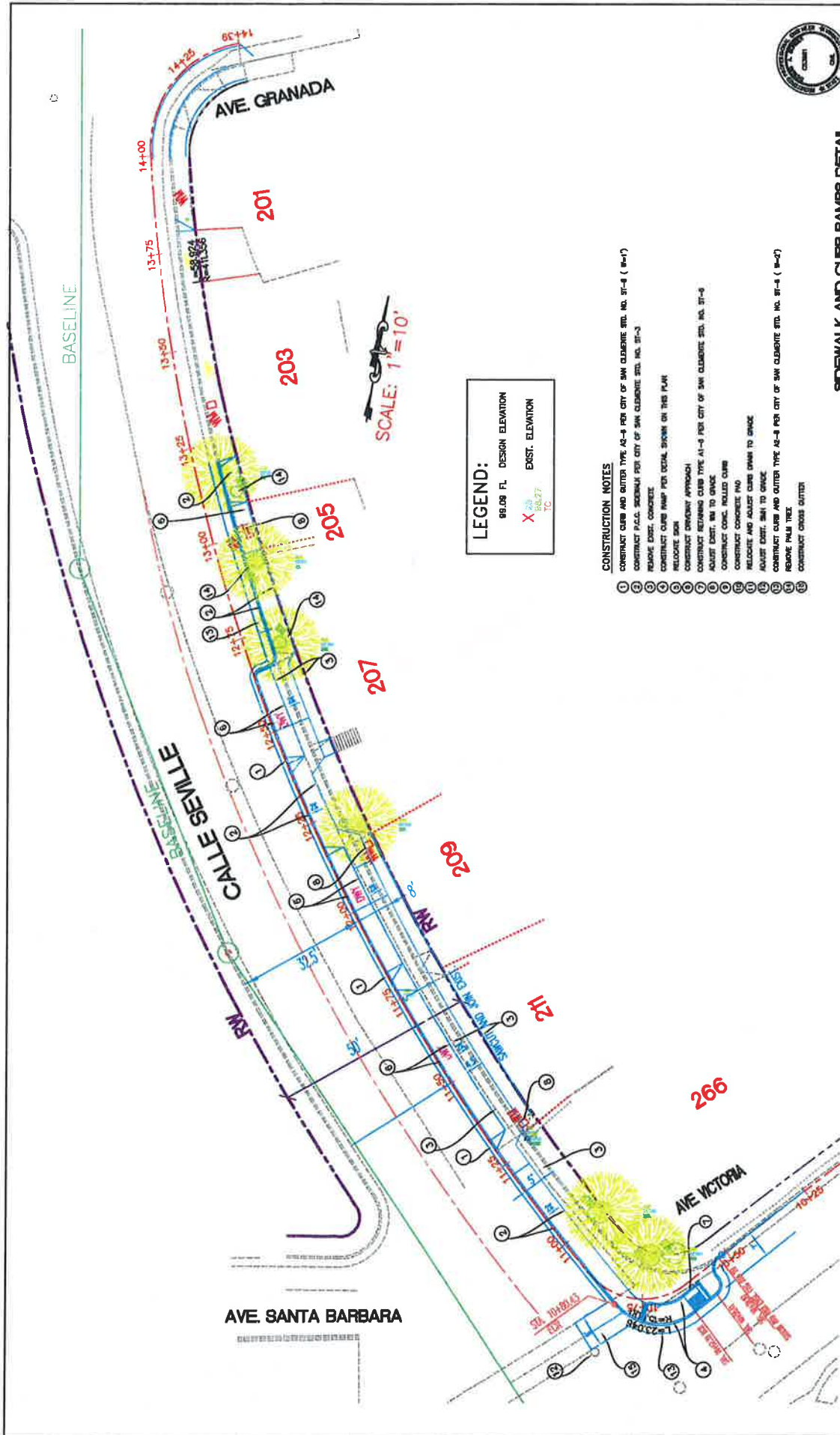
**City of San Clemente**

Engineering Division 910 Calle Negocio  
 Suite 100  
 San Clemente, CA 92673  
 Tel (949) 361-6118  
 Fax (949) 361-6316

## LOCATION MAP

**PARKING PROHIBITIONS & SIDEWALK DESIGN  
 at AVENIDA VICTORIA and CALLE SEVILLE**





**LEGEND:**  
 89.08 FL DESIGN ELEVATION  
 X 89.07 EXIST. ELEVATION  
 TC

SCALE: 1" = 10'

- CONSTRUCTION NOTES**
- 1 CONTRACT CURB AND GUTTER TYPE AS-8 PER CITY OF SAN CLEMENTE STD. NO. ST-4 (B-47)
  - 2 CONTRACT P.C.G. SIDEWALK PER CITY OF SAN CLEMENTE STD. NO. ST-3
  - 3 REMOVE EXIST. CONCRETE
  - 4 CONTRACT CURB RAMP PER DETAIL SHOWN ON THIS PLAN
  - 5 RELOCATE SIGN
  - 6 CONTRACT DRIVEWAY APPROACH
  - 7 CONTRACT RETAINING CURB TYPE A1-8 PER CITY OF SAN CLEMENTE STD. NO. ST-9
  - 8 ADJUST EXIST. SW TO GRAB
  - 9 CONTRACT CONC. ROLLER CURB
  - 10 CONTRACT CONCRETE FIN
  - 11 RELOCATE AND ADJUST CURB DRAIN TO GRAB
  - 12 ADJUST EXIST. SW TO GRAB
  - 13 CONTRACT CURB AND GUTTER TYPE AS-8 PER CITY OF SAN CLEMENTE STD. NO. ST-4 (B-47)
  - 14 REMOVE PALM TREE
  - 15 CONTRACT CROSS CUTTER



**SIDEWALK AND CURB RAMPS DETAIL**  
 RY-13 SIDEWALK CONSTRUCTION PROGRAM, PHASE I P.M. 13316  
 CALLE BEVILLE SIDEWALK  
 AVE CABRILLO TO AVE PALZADA  
 CITY OF SAN CLEMENTE



ENGINEERING SCALE: AS SHOWN	DATE: 2/7/02
DRAWN BY: J.S.	REVISIONED BY: J.S.
CHECKED BY: J.P.	APPROVED: [Signature]

NO.	DATE	BY	SIGNATURE	TITLE	APPROVALS

NO.	DATE	BY	APPROVALS	REFERENCES

NO.	DATE	DESCRIPTION	REVISIONS