

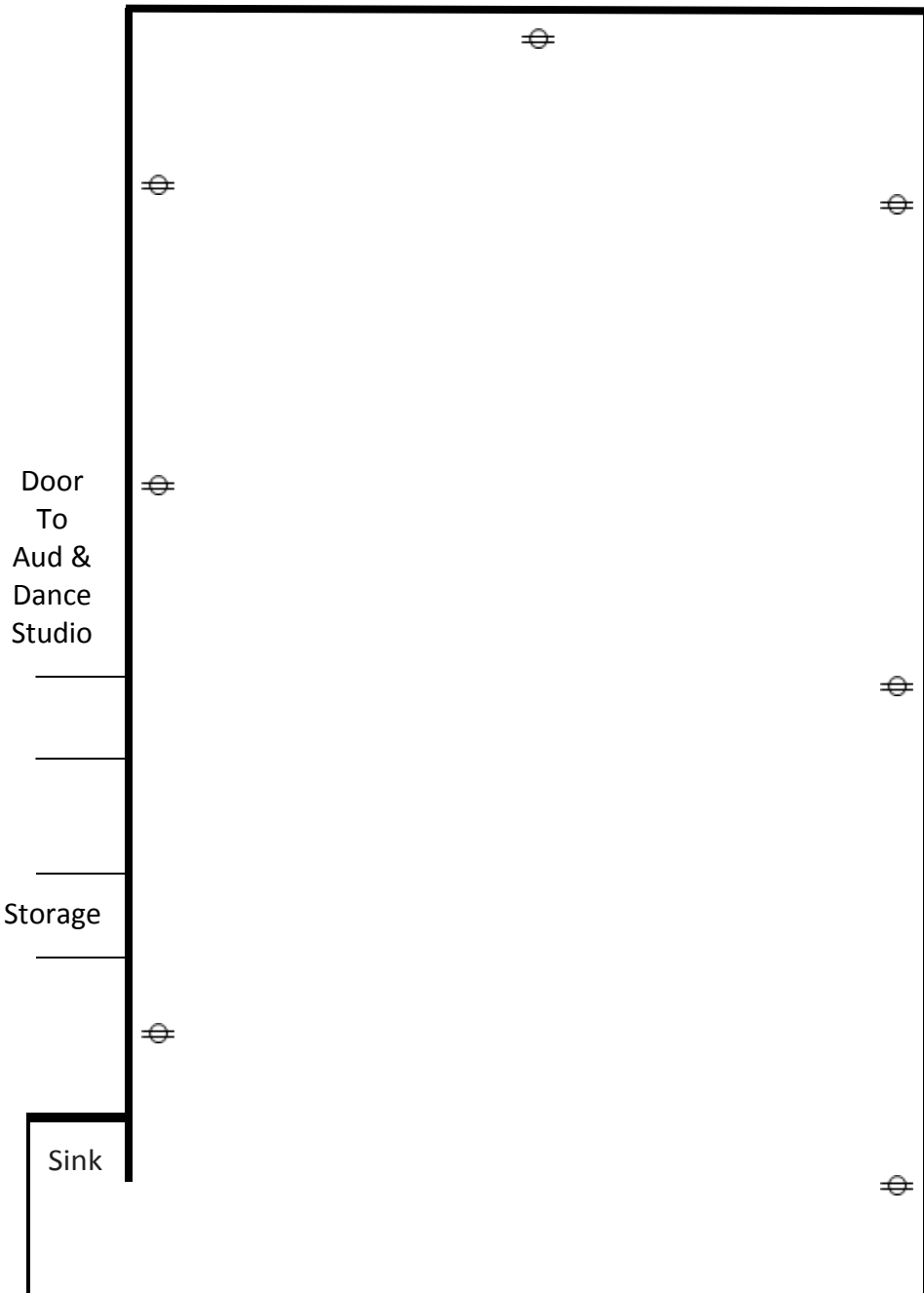
# COMMUNITY CENTER

100 N CALLE SEVILLE  
MULTI PURPOSE ROOM

NAME: \_\_\_\_\_

EVENT DATE: \_\_\_\_\_

TIME: \_\_\_\_\_



Exit  
Door

### TABLES

6 FT TABLES  
12 AVAILABLE

36" SQUARE CARD TABLES  
3 AVAILABLE

INDICATE CHAIRS WITH AN "X"  
60 FOLDING CHAIRS

ELECTRICAL OUTLET

Door  
To  
Aud &  
Dance  
Studio

Storage

Sink

Exit  
Door

UPDATED JANUARY 2019

CITY OF SAN CLEMENTE  
BEACHES, PARKS & RECREATION  
(949) 361-8264  
(949) 361-8280 Fax

