

Goldschmidt House



Historical images courtesy of the San Clemente Historical Society. All rights reserved.

Divel Building



Historical images courtesy of the San Clemente Historical Society. All rights reserved.

Along Avenida Del Mar



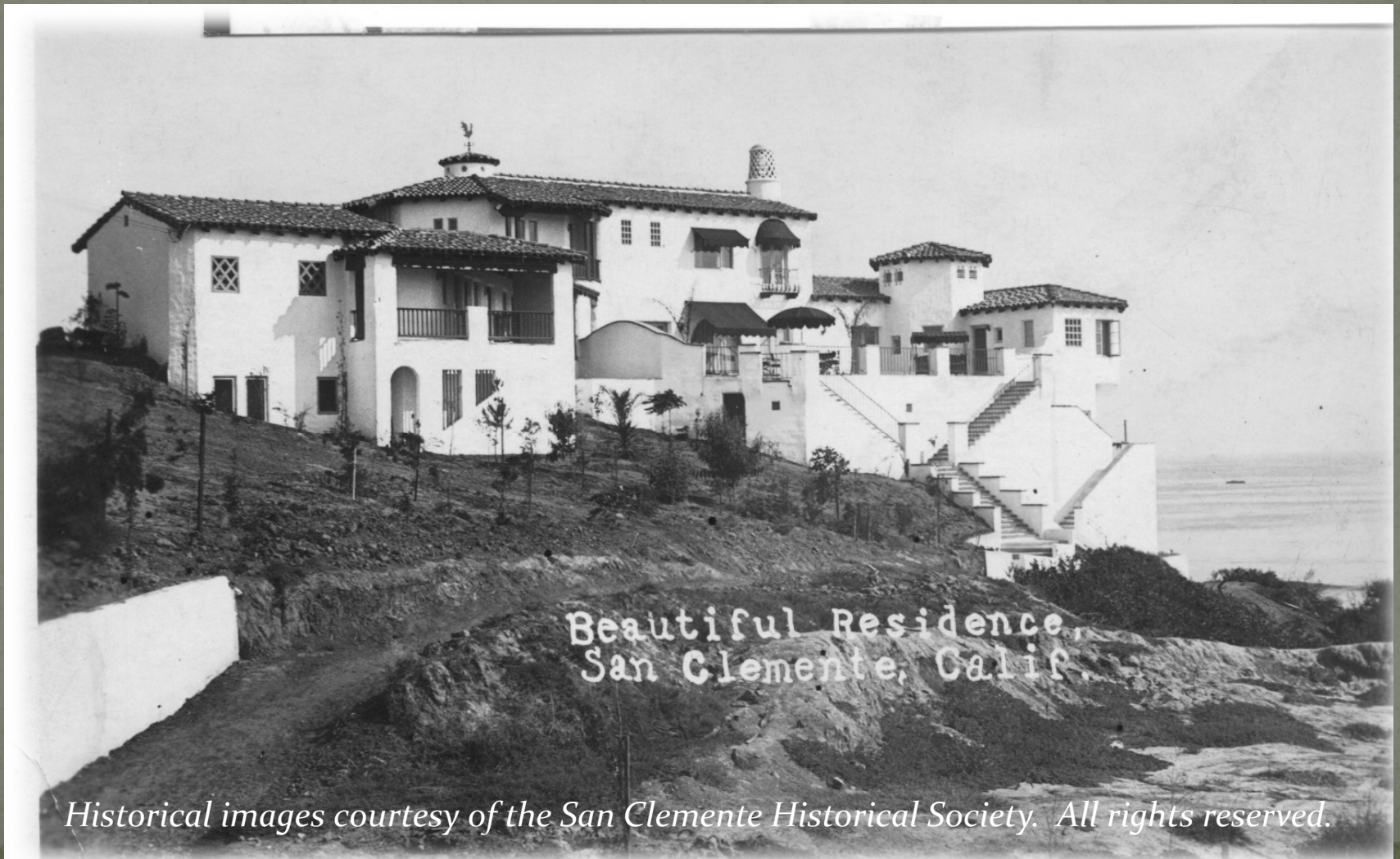
Historical images courtesy of the San Clemente Historical Society. All rights reserved.

Spanish Colonial only



Historical images courtesy of the San Clemente Historical Society. All rights reserved.

Bartow Mansion



Beautiful Residence,
San Clemente, Calif.

Historical images courtesy of the San Clemente Historical Society. All rights reserved.

Robison House



Historical images courtesy of the San Clemente Historical Society. All rights reserved.

Robison House Moorish fountain



Historical images courtesy of the San Clemente Historical Society. All rights reserved.

San Clemente bungalow



Copyright © 1996

Historical images courtesy of the San Clemente Historical Society. All rights reserved.

The Travel Inn



Historical images courtesy of the San Clemente Historical Society. All rights reserved.

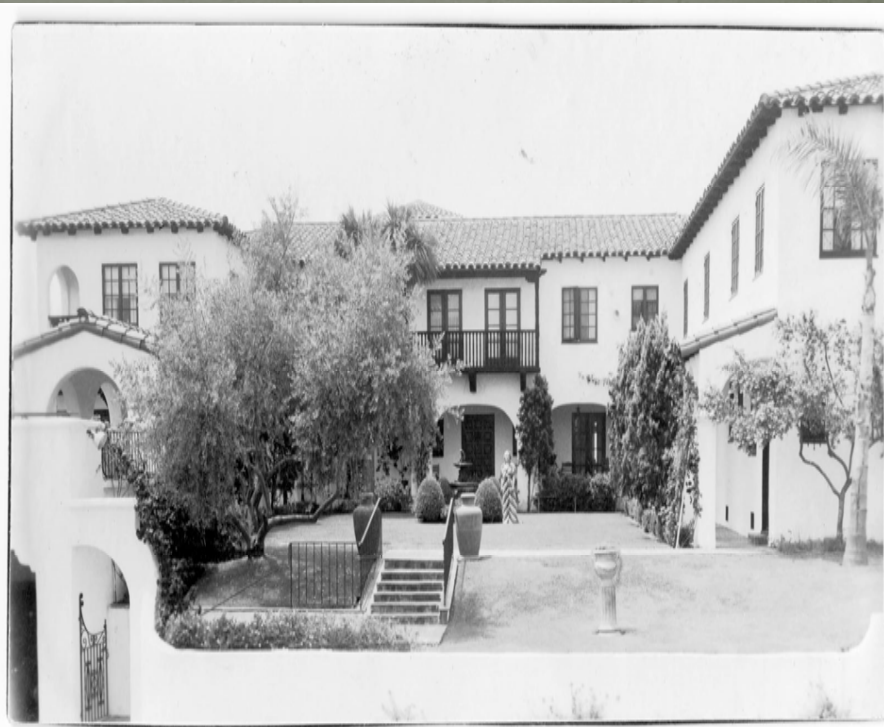
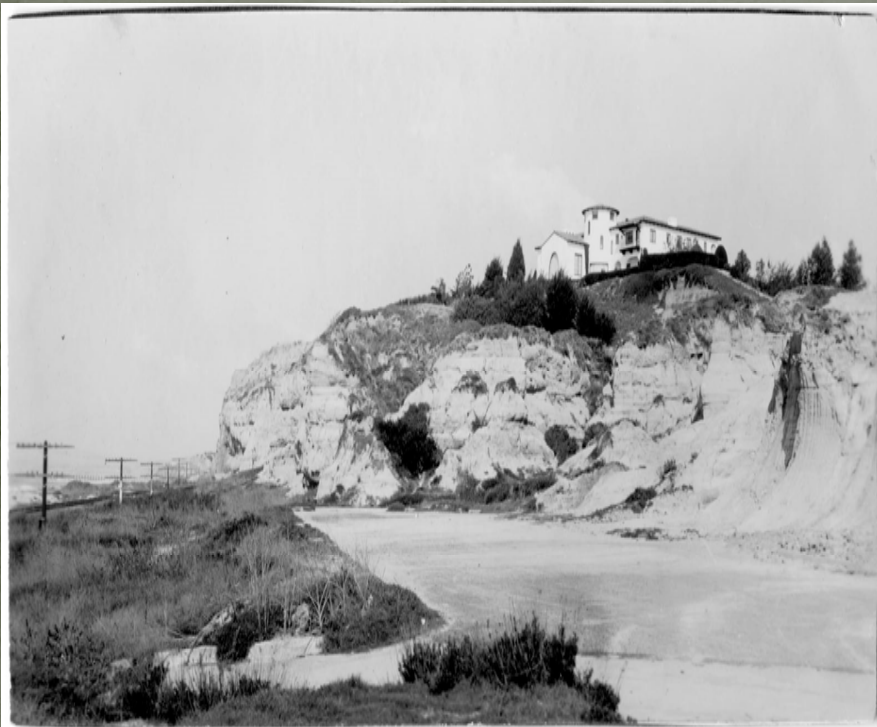
Murphine residence



The home of Mayor and Mrs. Thomas Murphine, San Clemente, California, stands on a precipitous bluff, the front of it poised above the breakers far below. This view is of the rear of the house, which is like an inverted U. The living room across the center of the picture, with the arched and square window, is a story and a half in height. The house is in the prevailing white stucco walls and red tile characteristic of San Clemente

Historical images courtesy of the San Clemente Historical Society. All rights reserved.

Smith residence



Historical images courtesy of the San Clemente Historical Society. All rights reserved.