

City of San Clemente Grease Interceptor Installation Requirements

All food facilities that generate grease, or have kitchen equipment that has the potential to produce grease are required to install a grease control device. A grease interceptor is the primary required device unless the City determines that it is impossible to install due to site restrictions, then other devices shall be required as an alternative.

Grease interceptors are required to be sized according to the latest Uniform Plumbing Code (adopted by the City of San Clemente) at the time of plan check and approval. Refer to Chapter 10 of the UPC.

Minimum size requirement for a grease interceptor is 750 gallons.

Interceptors shall have the following:

- Sample box
- Sanitary Tee, inside sample box on outlet side
- Vent (per UPC)
- Running trap
- 2 way clean-outs prior to lateral connection
- Manhole at each internal baffle, no more than 10ft between manholes
- No hidden internal baffles
- All grade rings shall be grouted/sealed
- All lids shall be traffic rated

Inspection of Interceptors:

- All connections to interceptor to be inspected by City Inspector prior to backfill
- Interceptor shall be filled with water prior to backfill for leak detection.

Concrete Collars:

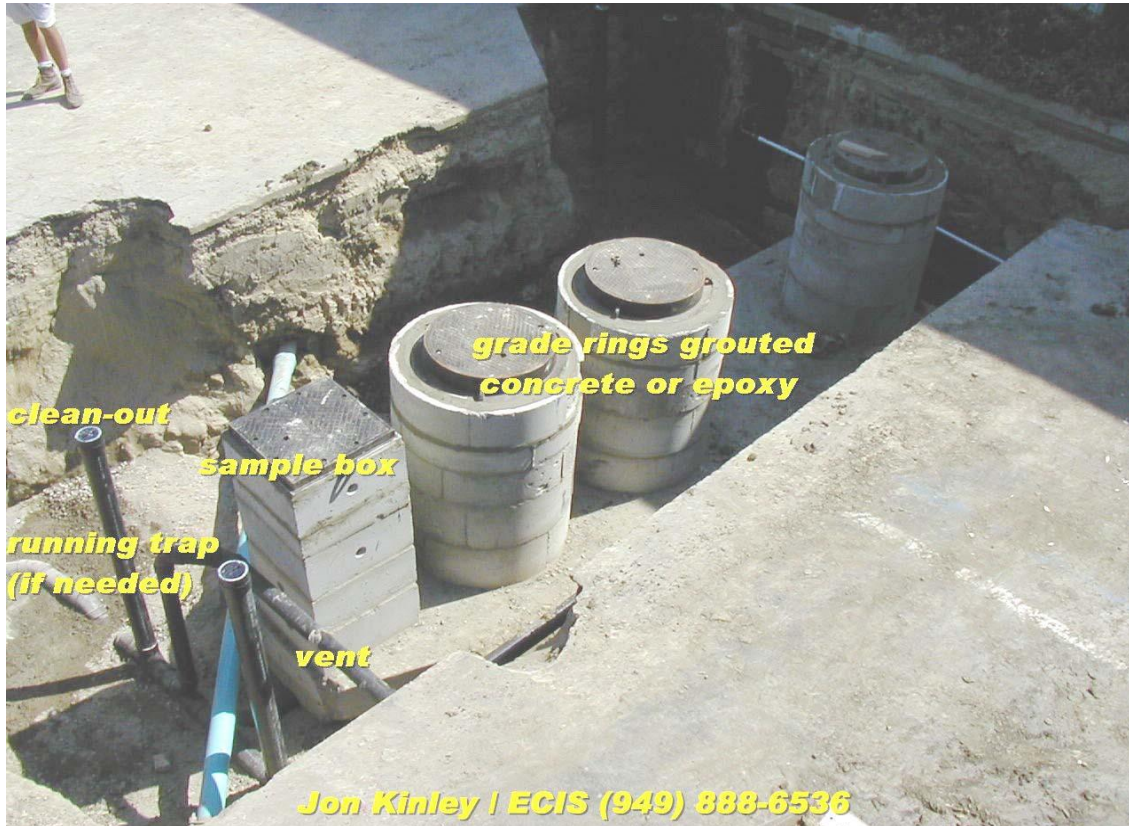
- All concrete collars around all metal access lids shall be installed a minimum of 1 half inch above finish grade/pavement.
- Collars to be a minimum of 18" wide and 12" deep.

See attached photos for more details.

Dan Dyer is the City's Pre-Treatment Compliance Inspector and ECIS is the City's Grease Interceptor Inspector. For any questions, contact Dan Dyer at 949-361-6153 or at dyerd@san-clemente.org.

This information is available on the City's website at www.san-clemente.org.

General overview of grease interceptor showing plumbing requirements:



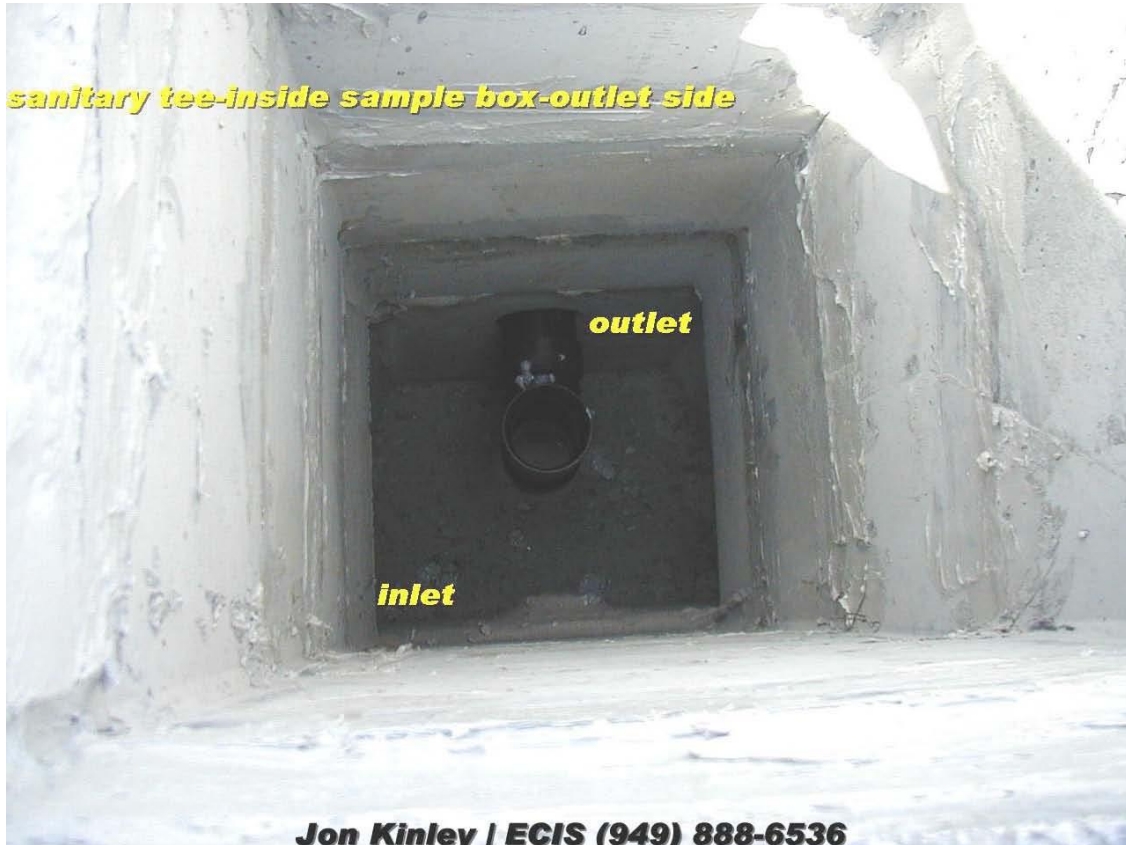
Internal GI baffle- all internal GI baffles must have access manhole-



Sanitary by-pass installed according to UPC



Sanitary tee inside sample box, on outlet side



Concrete collar around all access lids (18" wide x 12" deep) installed half inch above finish grade.



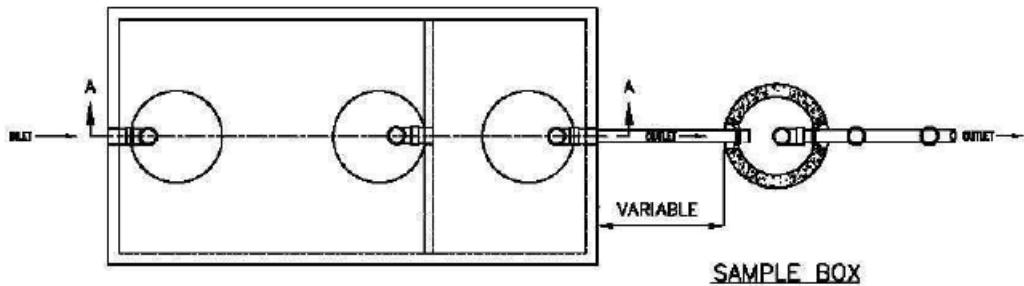


JON KINLEY
PHONE / FAX (949) 888-6538

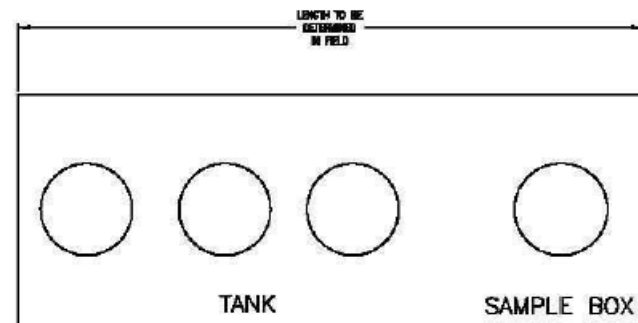
GREASE INTERCEPTOR TANK WITH SAMPLE BOX

REQUIREMENTS:

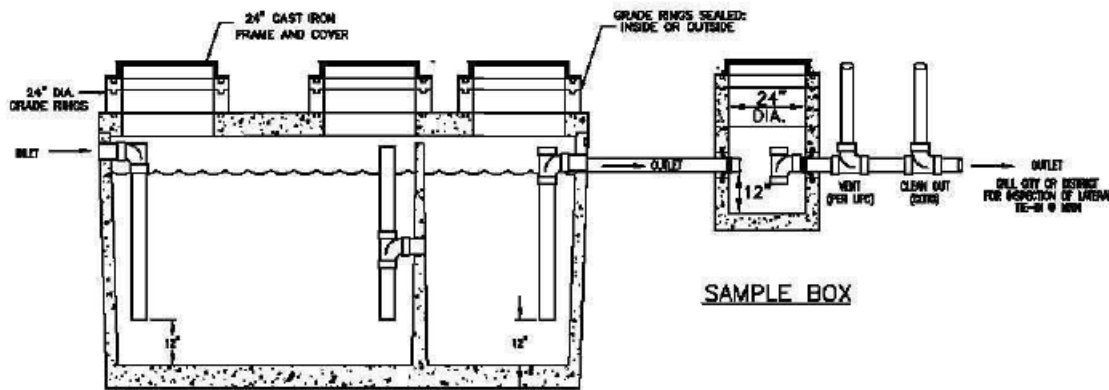
1. Size and Location of Interceptor to be approved prior to installation.
2. Interceptor to have:
 - a. Sample Box
 - b. Sanitary Tee; inside sample box, discharge side
 - c. Vent
 - d. Cleanout prior to lateral connection
 - e. Manhole at each internal baffle tube - no more than 10' between manholes
3. Inspection of Interceptor
 - a. All connections to interceptor to be inspected by ECIS prior to backfill.
 - b. Interceptor to be filled with water prior to inspection, per manufacturer's instruction or request.
4. All manholes and sample boxes to be installed a minimum of 1/2" above finish grade/pavement with a concrete collar a minimum of 18" around all manhole lids and 12" deep.
5. Concrete Collar, Sample Box fitting and all exterior piping supplied by installer.



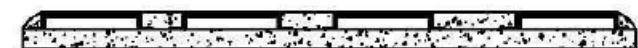
PLAN VIEW



CONCRETE COLLAR DETAIL
PLAN VIEW



SIDE VIEW



PLAN VIEW



END VIEW

GREASE INTERCEPTOR-S06-ECIS