



Week of Sunday, Aug. 27, 2017

USE CAUTION AT PICO NB OFF-RAMP

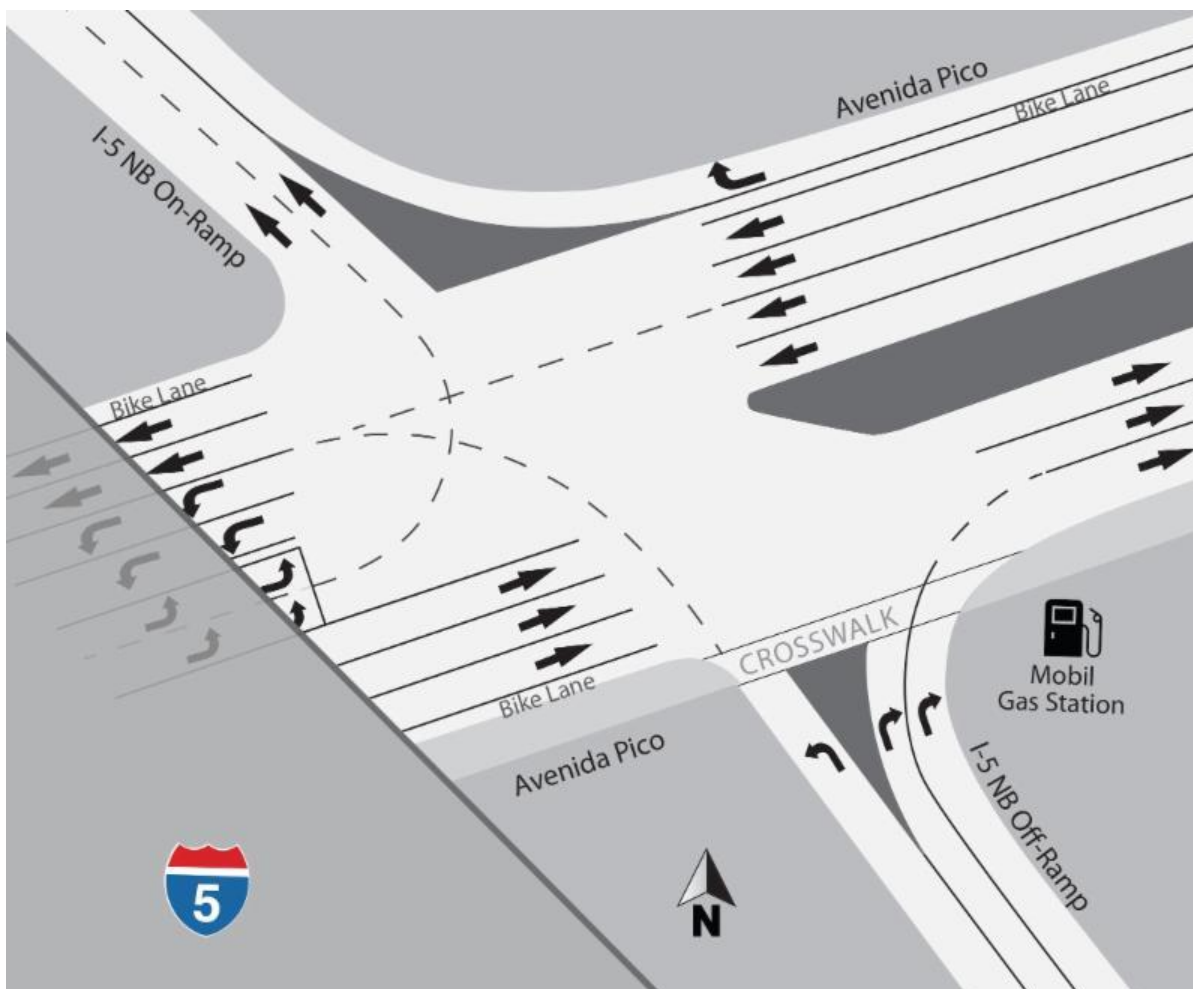
Traffic was shifted to the new portion of the Avenida Pico off-ramp from northbound I-5 on Monday, Aug. 21. The configuration at the bottom of the ramp has changed, and motorists no longer turn right into their own lane on eastbound Pico. This configuration is temporary and will change again once construction has been completed. Please stop before the crosswalk when the signal is red and WATCH FOR PEDESTRIANS.



NEW LANE CONFIGURATION

Once construction has been completed, Pico will be nine lanes under the bridge. There will be four westbound lanes and five eastbound lanes. Below is a map depicting the final configuration. Please note that three eastbound lanes will continue on Pico past the off-ramp. This will require motorists exiting I-5 to

watch more closely for eastbound traffic prior to turning right on Pico when the signal is red.



FREEWAY LANE CLOSURES

Ongoing Nighttime Lane Closures: There will be ongoing nighttime lane closures on northbound and southbound I-5 from Dana Point to San Clemente for the next several months as crews work to complete the project by early 2018. Motorists should expect delays from 10 p.m. to 5 a.m.

CLOSURES & DETOURS